

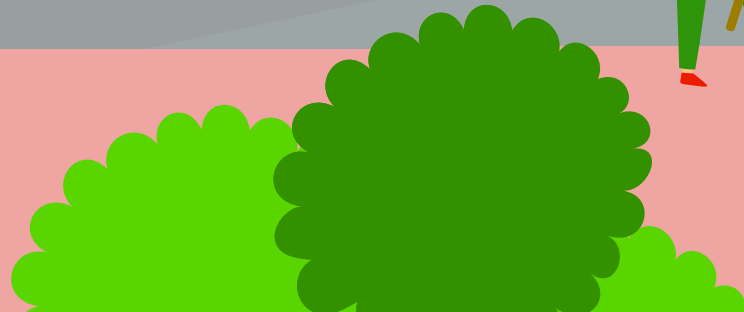
Safer Schools

Creating a safer, healthier school environment for our pupils.

We're planning to introduce a part-time vehicle exclusion zone in the streets around the entrance to your local primary school.

This leaflet explains what the proposed plans are, why it's taking place and asks for your views on how it can be implemented successfully.

For more information contact us on
0300 300 0380 or email:
parking@renfrewshire.gov.uk



From 19 April 2021, and running until 31 Dec 2021, we will be introducing a part-time vehicle exclusion zone at the start and end of the school day in some of the surrounding streets of four schools within Renfrewshire—with the aim of solving congestion issues, reducing emissions, and ensuring the safety of children around our schools.

The new scheme will help promote active travel by encouraging pupils to walk or cycle to school and will create a safer space for our pupils on their daily commute.



Q: Why is this taking place?

We want to make getting to and from school a safer experience for pupils, parents, carers and all our school staff and this pilot aims to reduce traffic congestion outside the school at peak times. It will reduce pollution in the area and will contribute to a healthier, more active lifestyle that we want all our pupils to enjoy.

There is no financial benefit to the council from the introduction of this scheme.

Q: What does this mean for me?

Only vehicles with an exemption will be allowed in the cul-de-sacs which access the schools during the restricted times and these are outlined below.

Primary School	Restriction Times	Streets Affected
St Catherine's, Gallowhill	8.30am – 9.15am	Brabloch Crescent and Netherhill Road
	2.30pm – 3.15pm	
St Charles, Paisley	8.30am – 9.15am	Rowan Street and part of Thrushcraigs Crescent
	2.30pm – 3.15pm	
Lochfield, Paisley	8.30am – 9.15am	Quarry Road, Paisley
	2.30pm – 3.15pm	
Barsail, Erskine (Note: Different PM time)	8.30am – 9.15am	Park Moor
	2.45pm – 3.30pm	

Exemptions

We recognise that it is necessary for certain vehicles to continue to have access to these streets at all times. Therefore, the following exemptions will apply:

- ✓ Those issued with a permit e.g. residents and school staff.
- ✓ Emergency services, including doctors on call, district nurses, carers and support workers;
- ✓ Postal service vehicles serving properties within the restricted roads;
- ✓ School buses and school transport serving the school within the restricted roads;
- ✓ School Contract Taxis;
- ✓ Blue badge holders dropping their child off, or residing at or visiting properties within the restricted roads.

If you feel you have a reason for exemption that is not listed above, please contact us via parking@renfrewshire.gov.uk

Applying for a permit

If you live on one of the streets outlined, please visit www.renfrewshire.gov.uk/saferschoolspermit to apply for your permit.

Each head teacher has been supplied with permits for emergency use by school staff as required.

Q: So where should I park during these times?

We want to encourage active travel to our schools and are asking parents and carers to walk, wheel or cycle to schools with their children. If you do need to drive, please find a suitable location away from the school, ensure that you are parked safely and legally and walk the remainder of your journey to the school gates.

Q: How will it be enforced?

An experimental Traffic Regulation Order (ETRO) will be in place for the duration of the pilot.

During this time, Police Scotland can issue Fixed Penalty Notices for anyone found driving in these streets during the restricted times without a valid exemption.

Q: How can I let you know my views?

We want to know what you think of the pilot while it is underway so we can evaluate it and, if necessary, adapt the scheme in response to your feedback.

We've met in advance with the school staff and parents at each school, the Head Teacher and, where possible, the Parent Council to discuss the plans and will continue to liaise with them throughout.

At the end of the pilot, we will complete a full evaluation and a decision will be made to make the scheme permanent, modify it or withdraw it entirely.

If you have any questions or want to pass on your feedback, you can email parking@renfrewshire.gov.uk or call 0300 300 0380