

St Catherine's ELCC Newsletter Term 1

August-October 2022

We would like to welcome you all back after the summer break and hope you had a lovely time.

Can we give you a few gentle reminders about drop off and pick up. When entering the building if you press the **reception** buzzer a member of staff will come and let you in, we keep the automatic doors locked for security reasons. When you are in, you can take your child to their peg and support them with hanging up their coat and any belongings they may have. Then take your child into their playroom where you will be met by staff. The same routine applies for picking up your child, a member of staff will let you in to the building and you will be met with a member of staff from each playroom in the main foyer.

We have introduced a signing-in and out register and you will be responsible for signing your child in and noting who will be collecting them. If the named person on this register, or the person you state is collecting your child, is not the person who arrives to pick-up your child, a member of staff will contact you. Please remember if there is a change of person collecting you can contact the nursery directly to inform us of this change the number is 0141 618 3863.

There have been some changes to our staff team as some of you may know, Amanda Brown has now retired although I am sure we will see her again when she comes to visit.

We have give a warm welcome to Margaret Armstrong our new Support Worker who is here to support our children through lunchtimes, ensuring they have a nice calm and sociable experince.

Mrs Henry is out on a secondment for 1 year and Mrs McLaughlin is Acting Head Teacher during this time.

Thank you.,



Could you please put a change of clothes into your child's nursery bag along with nappies and wipes if needed. Your children take part in lots of outdoor play with water, sand, planting, etc and will get messy.

With the forever changing weather and hopefully the sun coming out, we ask that you apply suncream before you bring your child/children to nursery. It would be helpful if you could provide a bottle of suncream for your child to keep in their bag, or in the nursery, for the staff to re-apply the suncream when needed. We also ask you to provide your child with a sunhat. Can you please ensure your child has appropriate footwear and a jacket with them on days when it is cold and wet, we do take the children for local walks throughout the day and these items are needed during these times.

Thank you 😊



Thank you to all as all our children are now registered for Dolly Parton's Imagination Library. This is a fantastic resource we have the privilege of offering our families, your children will receive a monthly book encouraging early literacy skills. Can we please remind you at this time of the importance of letting us know of any changes of circumstances in relation to change of address and phone number. Thank you.

Our 3 and 4 years old children will also be receiving Dolly Parton Imagination Library books, more information about this will be available in the near future.

Parent Pay



Can you please remember to log onto your parent pay app and give a little donation for our nursery. We ask for a minimum donation of £2 per week. This donation will go towards healthy snacks, trips and outings and important resources for your little cherubs to explore and play. If you need any support with this please contact Bertha, our helpful clerical assistant, at the nursery office on 0141 618 3863.



We are inviting all families to our doors open day on Wednesday 7th of September 9.15 am-10.15am and 2.00pm-3.00pm. This is to give you the opportunity to come and see how well your child has settled bck into the routine of their day and how they explore within the nursery environment. As well as sharing their thoughts and interests with them and having a look at all the learning they have taken part in.

If you have any questions regarding the open day please do not hesitate to speak to a member of staff.



We will be holding parents' meetings so you can come in and have a chat with your child's keyworker, have a look at their journey book and discuss any other matters you wish. The dates are

Tuesday 11th October for 2-3 room and

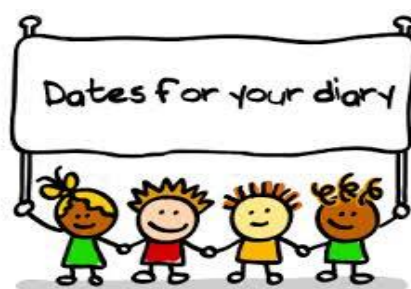
Thursday 13th October for 3-5 room.

Nearer the time you will have the opportunity to book a time slot with your child's keyworker.



We are looking for volunteers to join our Parent's Committee.
You will be, with the support of staff, taking part in the life of the nursery.
Sharing your thoughts and ideas about interests and activities your children will
enjoy taking part in.
If you are interested in joining please see Caitlin or Sharon.

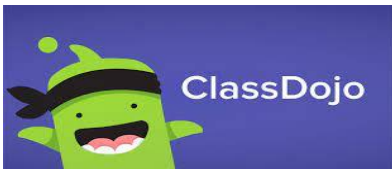
Thank you



- September weekend ELC closed Fri 23rd Sept- Mon 26th Sept
Children return Tues 27th Sept
- Open day Wed 7th Sept 9.15am-10.15am and 2.00pm-3.00pm
 - Parents meetings 2-3 room Tuesday 11th Oct
 - Parents meetings 3-5 room Thursday 13th Oct
 - October Week Term Time children only
 - Mon 17th Oct-Fri 21st Oct
 - Mon 24th Oct In Service Day ELC Closed
 - Children return Tues 25th Oct

VOLUNTEERS NEEDED!

We are looking for volunteers to help us develop our garden spaces. If you or any of your family enjoy planting or building and would like to come in and work along with our children and staff please let us know.



The staff will continue to use the Class Dojo to let you know what the children have been learning about, ideas for home and other useful information. Can we remind you that Class Dojo is for sharing learning experiences and ideas both at nursery and at home. If you need any information and or support for your child, please do not hesitate to contact the nursery.

If you have not logged on to Class Dojo, or are a little unsure of how to please speak to a member of staff and we will support you to access this helpful app.

We are always keen to have parental feedback and we appreciate the time you take to complete and submit.

Thank You

Lunch Information



Can you please let us know if there are any changes to your child/ren's dietary or allergy requirements. You can do this by contacting the nursery by phone or speaking to a member of staff at drop off and pick up times. You will find the menu on the Class DoJo.

If you are concerned your child may not eat what is on the menu on certain days, you can if you wish supply a packed lunch. Staff will always encourage all children to try the hot lunch we receive.

Our Staff Team



Ms Henry
Head Teacher



Ms McLaughlin
Acting Head Teacher



Sarah McCall
Depute Head ELCC



Nicola Hunter
Depute Head ELCC



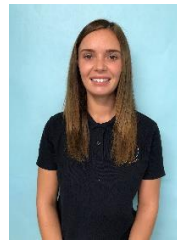
Sharon Donaldson
Senior ELCCO



Amanda O'Sullivan
Early Years Graduate



Caitlin Robertson
ELCCO



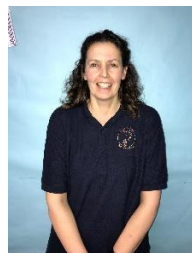
Rebecca Thorburn
ELCCO



Jennifer Moore
ELCCO



Nikkita Kernachan
ELCCO



Wendy Slavin
ELCCO



Louise Watson
ELCCO



Angela Graham
ELCCO



Kirsty Carswell

ELCCO



Zoe Krus

ELCCO



Thomas Jones

ELCCO



Heather Ferrier

ELCCO



Stephanie Irvine

ELCCO



Rebecca Fraser

ELCCO



Christina Waltham

Support Worker



Margaret Armstrong

Support Worker



Cynthia Bosak

Support Worker



Bertha Osei

Senior Clerical Officer