



**St Anne's Early Learning & Childcare Class**  
**NEWSLETTER**  
**October 2021**



**SCHOOL CONTACT DETAILS:**

**St Anne's Primary School**  
**Park Drive**  
**Erskine**  
**Tel: 0300 300 0201**

**email:stannesenquiries@renfrewshire.gov.uk**  
**Head Teacher: Nuala Boyd**  
**Depute Head Teacher: Paul Welsh**  
**Depute Head of Centre: Natalie McAdam**  
**Depute Head of Centre: Tracy O'Neill**  
**Senior Early Learning & Childcare Officer: Tracy Reilly**

**A Warm Welcome**



We would like to welcome our children and families back to St Anne's Early Learning and Childcare Class for the session 2021/22. We would also like to take this opportunity to welcome all our new children and families as they embark on a big adventure at St Anne's ELCC.

**Staffing Update**

As you will be aware, Mrs Elaine McConville recently took on the role of Acting Senior Early Learning & Childcare Officer at Paisley Early Learning & Childcare Centre. We are delighted to inform you that Mrs McConville will return to St Anne's ELCC on Monday 20<sup>th</sup> September 2021 following a successful experience as Acting Senior ELC Officer.

Mrs McConville will resume Key Worker responsibility for the Green Group and be part of the Inveraray Castle Family Group. Continuity for our children is of great importance for us therefore Mrs McConville will engage in a transition meeting to allow her to get to know the children, ensuring important information is shared.

**Primary 1 Registration - August 2022**

Children who reach 5 years of age between 1 March 2022 and 28 February 2023 inclusive should be registered for education in their catchment school

**Online registration: Monday 1<sup>st</sup> November 2021 – Friday 5<sup>th</sup> November 2021**

Registration no longer takes place in school and must be done online during this period.

Parents/carers must provide the following required documents for registration:

- Child's full Birth Certificate
- Most recent Council Tax Notice
  - If you are not currently resident in the property either a concluded missive or a signed and witnessed tenancy agreement/lease.
- Child Benefit Statement
  - In the event that a Child Benefit Statement is not available, a Driving Licence or a Bank Statement/utility bill showing transactions over the most recent 3 months and the applicant's address may be accepted
- Roman Catholic Baptismal Certificate (if applicable)
- You must register your child in only one school, either the denominational or non-denominational school for your area. If you need information on schools for your area please telephone 0300 300 0170 or visit our website [www.renfrewshire.gov.uk](http://www.renfrewshire.gov.uk) and search "find it on the map".
- If you want your child to go to a different school you

## Parent/Carer Engagement – Bookbug Sessions



Bookbug sessions are fun and friendly events for children and their families to enjoy together. Each session lasts around 30 minutes and include songs, stories and rhymes. They also have many benefits for your child, such as building up their confidence and social skills, and can enhance their speech and language development.

Due to current Covid -19 restrictions, we are unable to invite parents/ carers into the ELC however we are delighted to say that outdoor Bookbug sessions are back by popular demand!

To ensure safety for all present, we will allow up to 6 adults at a time to attend each session therefore we are introducing several dates/ times to attend the sessions.

If you are interested in coming along with your child, please complete the attached form with your preferred date **no later than Wednesday 20<sup>th</sup> September 2021.**

### Session 1 (Please choose 1)

**Monday 25<sup>th</sup> October 2021**

**2pm – 2:30pm or Thursday 28<sup>th</sup> October 2021  
2pm- 2:30pm**

### Session 2 (Please choose 1)

**Monday 1<sup>st</sup> November 2021 2pm – 2:30pm or  
Wednesday 3<sup>rd</sup> November 2021 2pm – 2:30pm**

### Session 3 (Please choose 1)

**Monday 8<sup>th</sup> November 2021 2pm – 2:30pm or  
Wednesday 10<sup>th</sup> November 2021 2pm – 2:30pm**

### Session 4 (Please choose 1)

**Monday 15<sup>th</sup> November 2021 2pm – 2:30pm or  
Wednesday 17<sup>th</sup> November 2pm – 2:30pm**

## Cooking Club/ Nutrition Scotland



*“Parents/ Carers are supported to regularly and meaningfully engage in their child’s learning at home and within the early learning and childcare setting”*

How good is Our Early Learning and Childcare (HGIOLC), 2016

At St Anne’s Early Learning & Childcare Class, we strive to maintain positive partnerships with the children and families. We were delighted with the positive feedback from children and parents/ carers following our online cooking club via our Facebook page. Following this success, we would like to continue our cooking club via our Facebook page, this time in partnership with Nutrition Scotland. Nutrition Scotland is a Social Enterprise development, that aims to improve health and wellbeing through improved access to a variety of nutritional services and information. Their services are designed and delivered by public health nutritionists and dietitians who believe in equal access to healthy food and reducing health inequalities.

The programme runs for 6 weeks and if you wish to participate you will receive your very own recipe booklet. You will also have online resources available such as our very own cooking club or additional nutrition guidance at <https://www.nutritionscotland.org/>

Nutrition Scotland would love for you to share any photos of your participation via their website if you wish to do so.

If you would like to join our cooking club, please complete the attached form, and return **no later than Wednesday 20<sup>th</sup> October 2021.**



## Parental Engagement

*“Our strong partnerships with parents/carers increase family engagement in children’s development and learning and impacts positively on the progress children make”*

How good is Our Early Learning and Childcare (HGIOELC), 2016



### Parents Committee

At St Anne’s Early Learning & Childcare Class, we strive to create strong partnerships with our parents/carers and families.

We are delighted to share that our Senior Early Learning & Childcare Officer Tracy Reilly will be leading our parents committee for the session 2020/2021.

We would like to welcome you to our first meeting on **Thursday 21<sup>st</sup> October 2021** to be held on the decking area within St Anne’s ELCC. Please return the attached slip if you are able to attend no later than **Monday 18<sup>th</sup> October 2021**.

If you are unable to attend and would like to offer fundraising suggestions, please feel free to share your ideas via our Facebook messenger or alternatively email [stannesenquiries@renfrewshire.gov.uk](mailto:stannesenquiries@renfrewshire.gov.uk)

In addition,



## Parental Engagement

We would like to welcome all our parents/ carers to join our private Facebook page at **St Anne’s ELCC** or our Twitter page **@StAnnesELCC**.

This is a fantastic way of keeping up to date with the events happening within the ELC and the exciting experiences your child is involved in.



## Rights Based Learning

*“Our curriculum framework secures children’s wellbeing and rights including the right to play”*

How good is Our Early Learning and Childcare (HGIOELC), 2016

At St Anne’s ELCC, we strive to promote Rights Based Learning approaches. Rights based education promotes improved relationships, ethos and attainment and achievement. It places the UN Convention of the Rights of the Child at the heart of planning and service delivery and integrating children and young people’s rights into every aspect of decision-making policy and practice.

This month, we are focusing on

**Article 12 - You have the right to make choices.**

**Article 24 – You have the right to stay safe.**

**Our Rights of the Child Song**  
**(To the tune of wheels on the bus)**

**The Rights of the Child go round and round,  
round and round, round and round.  
The Rights of the Child go round and round, all  
around the world.  
You have the right to relax and play, relax and  
play, relax and play.  
You have the right to relax and play  
and stay fit.  
You have the right to go to school, go to school,  
go to school.  
You have the right to go to school,  
all around the world.  
You have the right to healthy food, healthy food,  
healthy food.  
You have the right to healthy food  
and water that is good.**

## Home Reader

*“Our setting values the contribution parents/ carers and families make to children’s learning. Parents/ carers are supported to regularly and meaningfully engage in their child’s learning at home”.*

How good is Our Early Learning and Childcare (HGIOELC), 2016

Each Wednesday, your child will receive a book of their choice home from the ELC which will be accompanied with a home reader booklet.

We encourage all parents/ carers and family members to read the book to your child and use the home reader to review the book. Please encourage your child to discuss their likes/ dislikes or favourite parts and record using their home reader booklet.

We are looking for one parent/ carer helper each Wednesday to support the children to select a book of their choice. If you would be available at any time to support, please speak with our Literacy Champion Mrs Lynsey Cowan.

## QR Codes Library



A Quick Response code, commonly known as a QR code, is a type of digital code used to store or link to information. It's like a label that can only be read by a machine for example mobile phone, or tablet/ I Pad device.

At St Anne’s ELCC we ensure that practitioners read to the children daily, and we are very excited to share that using our new QR code system, your child will be able to listen to stories from the comfort of your own home.

Within our porch area there will be a list of QR codes for parents/ carers to scan and allow the children to listen to stories being read by staff. All you have to do is use your mobile phone or tablet device to scan the QR code and your child and family can enjoy a lovely story together.

As always, we invite all parents/ carers to join the fun and share a recording of a children’s story. If you wish to do so, please telephone the ELC on 0300 300 0201.

## Forest Schools



*“Children contribute effectively to the setting and its community in purposeful and innovative ways. They enjoy and are actively involved in learning through spontaneous play opportunities, well-planned, purposeful play and through relevant real-life experiences”.*

How good is Our Early Learning and Childcare (HGIOELC), 2016

Forest schools provide a specialised learning approach that offers children regular opportunities to achieve and develop confidence and self-esteem through hands-on learning experiences in a woodland or natural environment.

St Anne’s ELCC are heading off on a big adventure to the Forest where we aim to build independence by using natural resources to enhance learning opportunities.

Each group will have the opportunity to access the forest over a six-week period and you will receive information regarding which block your child will attend.

Please keep a close eye on our Facebook and Twitter pages as we share our exciting Forest experiences.



The PATHS Programme (Promoting Alternative Thinking Strategies) empowers all children to develop fundamental social and emotional learning skills which enable them to make positive choices throughout life.

To develop self-esteem, we will be introducing pupil of the day and PATHS compliments to the children in which your child will receive compliments from practitioners, their peers and we encourage you and your family to share compliments and return them to the ELC to be shared.

Look out for pupil of the day via our Facebook page!

## Allotments



We are very excited to share that we are embarking on a big adventure to the Erskine Community Allotments. During our time at the allotments, we will be learning how to grow and plant various fruit and vegetables and the perfect seasons to do so.

As always, we would love for our parents/ carers to join in the fun so if you would like to join us please speak to a member of staff.

Look out for our visiting dates on our Facebook page.

## Gardening Club



Calling all keen gardeners!

Following our visits to the allotment, we aim to use our experiences to extend our learning within the ELC outdoor area.

We are delighted to introduce our first ever St Anne's ELCC gardening club and would like to welcome our parents/ carers or Grandparents to join.

If you have a keen interest in gardening and would like to share your knowledge with our children, please contact the ELC on 0300 300 0201.



In addition, we would welcome donations of plants and flowers or any other lovely gardening materials that are available.

## Transitions

*"There are comprehensive, well-planned transition arrangements in place. We actively work in partnership with others, including the named person, to ensure transition arrangements are effective for all children, in particular for those requiring additional support."*

How good is Our Early Learning and Childcare (HGIOLEC), 2016



Each year, we work closely with our local primary schools to work alongside the P6 pupils and our children who are ready to embark on the preparation for Primary School education.

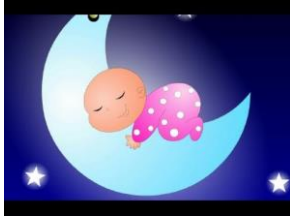
In recent times, due to Covid- 19 restrictions, we have required to limit with the number of interactions we have had with other establishments. Although Covid -19 restrictions have eased, our priority is keeping our children and families as safe as possible while maintaining positive links with our catchment schools.

Starting this term, our children who will attend Primary One in August 2022 will have the opportunity to work with the primary six pupils from our local feeder schools in small groups ten from the ELC and catchment establishment, outdoors at a 2m distance.

Careful consideration has been given when planning such events and a specific risk assessment has been completed to maintain the safety of all involved and allow the children to develop positive relationships with their future buddies.

A copy of our 'Transition Sessions' risk assessment will be available on our Facebook page. If you do not wish for your child to engage in the or 'Transition Sessions' you have any questions, please do not hesitate to contact Depute Heads of Centre Miss Natalie McAdam or Mrs Tracy O'Neill.

## Our Recent Learning



At St Anne's ELCC, we plan responsively to the children's interests. We have several children within the ELC who have recently welcomed a new sibling or await the arrival a new sibling in the upcoming months. During high quality observations, staff have observed the children in the home corner discussing how babies are cared for and this has encouraged learning experiences relating to care for newborn babies. As part of the experience, we are encouraging the children to bring in a baby photograph of themselves to share with their peers. This will then be kept within their learning story within their learning journal. Please remember to label the photograph on the back with your child's name.

We would also like to take the opportunity to congratulate our families who have welcomed a new arrival or those who await with anticipation on their upcoming arrivals.

## Enhancing Our Outdoor Learning Experiences

12345  
67890

Our Literacy Champion Mrs Ji Eun Sung is working closely with our ELC practitioners to enhance numeracy opportunities outdoors. Our ELC practitioners use SEAL strategies to promote early numeracy skills. SEAL (Stages of Early Arithmetical Learning) introduces children to different techniques to use when solving mathematical problems. We are currently looking for any donations of fence/ door numbers and would appreciate any assistance where possible.



*"Loose parts create richer environments for children, allowing them to do what they need to do, to follow their interests and go where their curiosity takes them. Environments full of loose parts lend themselves to a blurring of distinctions between learning and playing, allowing children to experiment, enjoy and find things out for themselves". (Loose Parts Toolkit, Inspiring Scotland, 2019)*

## Loose Parts

At St Anne's ELCC, we provide many opportunities for children using loose parts play.

Loose parts are materials that can be moved, carried, combined, redesigned, lined up, and taken apart and put back together in multiple ways. They can be used alone or combined with other materials. This allows the children to play in many ways such as making spaceships, buildings, or obstacle courses to develop their balance and motor skills.

Loose parts play enhances children's ability to think imaginatively and be solution orientated. It brings a sense of adventure and excitement to children's play in all the areas.

We are currently developing such experiences outdoors and therefore are looking for donations,

We are looking for materials below but please speak with a member of staff if you have any additional items you think may be suitable.

You will find a list of materials on the back of this newsletter.

## Parent Pay



*ParentPay* is the market leading online payment service for schools and families. They provide online payments such as snack and allow parents/carers to consent to outings and trips.

You should have received a ParentPay activation letter, and we ask that if you have not already done so, please activate Parentpay as soon as possible. This will allow you to consent to outings and trips you're your child to attend, which enhances their learning experiences.

## Busy Bakers/ Snack Fund



*At St Anne's ELCC, the children have opportunities to bake and cook regularly. As they do so, they enhance their literacy skills when following instructions and recipes, numeracy skills as they weigh and estimate amounts and health and wellbeing as they learn about different food groups.*

*We also use 'Setting the Table' document created by NHS Health Scotland and the NHS Eat Well to Play Well resources to promote a healthy and balanced diet and by doing so, provide healthy and fulfilling snack options for our children.*

*We would like to take this opportunity to thank our parents/ carers who have contributed to our Busy Bakers/ snack fund this month we have collected £18 donations.*

*We fully appreciate any support to our £3 per week optional donation which can be made via Parentpay and thank you for your continued support and any donations are always welcome.*

## Halloween Celebrations



On Wednesday 27<sup>th</sup> October 2021, we will be having our Halloween Celebrations in which the children will engage in a range of fun and creative activities.

On this day the children are welcome to dress up if they wish and we ask that parents/ carers carefully label their child's items of clothing and props.

During our celebrations, the children will be offered party food such as crisps, cake, and chocolate. If your child has any special dietary requirements, please see a member of staff.

## ELC Important dates



**Monday 25<sup>th</sup> October 2021 – Bookbug session 1**

**Thursday 21<sup>st</sup> October 2021 – Parent Committee meeting**

**Wednesday 27<sup>th</sup> October 2021 – Halloween Party Celebrations**

**Thursday 28<sup>th</sup> October 2021 – Bookbug session 1**

**Monday 1<sup>st</sup> November 2021 – Bookbug session 2**

**Wednesday 3<sup>rd</sup> November 2021 – Bookbug session 2**

**Monday 8<sup>th</sup> November 2021 – Bookbug session 3**

**Wednesday 10<sup>th</sup> November 2021 – Bookbug session 3**

**Monday 15<sup>th</sup> November 2021 – Bookbug session 4**

**Wednesday 17<sup>th</sup> November 2021 – Bookbug session 4**