

Roger Pen

4. Using Roger Pen

4.2 Connecting to multimedia devices

You can connect your Roger Pen to an audio source – such as your TV, tablet or HiFi – to hear its audio signal directly in your hearing aids.

Via docking station

Make sure the docking station is powered on and properly connected to your audio source, as described in 'Getting started' (page 12). Slot your Roger Pen into the docking station. After turning on your audio source, Roger Pen will automatically detect the presence of an audio signal and start transmitting it.



- ① If the docking station is not powered on, Roger Pen can still detect and transmit an external audio signal. Simply switch Roger Pen on.
- ① When Roger Pen transmits an audio signal its microphone is muted.

28

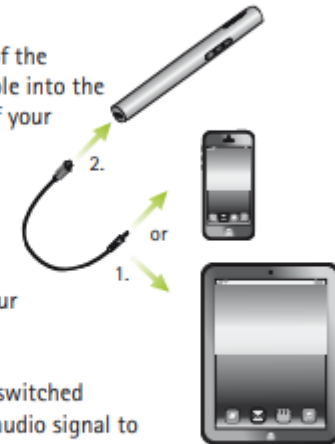
From the user guide

https://www.phonak.com/content/dam/phonak/Products/Roger/User_Guide_Roger_Pen_029-0276.pdf

Via micro-USB audio cable

Alternatively, you can use the short micro-USB audio cable to connect your multimedia device directly to your Roger Pen.

1. Plug the round end of the micro-USB audio cable into the headphone output of your multimedia device.
2. Plug the rectangular end (micro-USB) of the micro-USB cable into the socket of your Roger Pen.



- ① Roger Pen must be switched on to transmit the audio signal to your hearing aids. After you have activated your multimedia device's audio signal, Roger Pen will detect this signal and will automatically mute its own microphone.

29