

Contents

Contents	1
Welcome from the Head Teacher	4
Our Values	4
School Aims	6
Vision	6
Aims.....	6
Service Pledges	7
Standards and expectations.....	8
About Our School.....	9
School staff	10
School Information	11
School contact details	11
Parent Council contact details	11
School Information.....	12
School year	13
School in-service days	13
Newmains School Uniform.....	14
Registration and Enrolment.....	15
Induction procedures for pupils starting school and their parents	15
Class Organisation	16
Assessment and Reporting.....	16
Summary of the School Improvement Plan.....	17
Strategic Improvement Priorities	17
Actions/Interventions.....	17
The Scottish Attainment Challenge.....	17
Other Information	17
Transfer to Secondary School	18
Car parking	18
Care and welfare	18

School security	18
Attendance and absence	18
Bullying	19
Safeguarding including child protection	19
Mobile phones	20
School meals	21
Breakfast Club	21
School transport.....	22
Pick-up points	22
Placing requests	22
Assisted support needs.....	22
Playground Supervision.....	23
Pupils leaving school premises at breaks	23
Equalities	23
Medical and Health Care	24
Religious Observance.....	24
Religious and Moral Education.....	25
Wet weather arrangements.....	25
Curriculum Matters	25
School curriculum.....	25
Broad General Education	26
Curriculum for Excellence	26
Play Pedagogy	26
Health and Wellbeing Education	29
PATHS	30
Relationships, Sexual Health and Parenthood	30
Other subject areas	30
Social Studies	30
Sciences	31
Technologies.....	31
Expressive Arts:	31
Music.....	31

Art and Design	32
Additional Support for Learning	32
Inclusion.....	34
Support.....	34
Universal support Universal support starts with the ethos, climate and relationships within every learning environment. It is the responsibility of all practitioners and partners.....	34
Targeted support.....	34
Educational Psychology Service	35
Specialist support service – teachers teaching in more than one school.....	36
Homework	36
Developing the Young Workforce.....	37
Extra Curricular Activities	37
Masterclasses	38
Home School Community Links	38
Parental Involvement.....	39
Whole Family Wellbeing	40
Pupil Council	41
Community Links	41
School Lets	42
Other Useful Information	42
Listening to learn - complaints, comments and suggestions	42
Data Protection.....	43
Information in Emergencies	43
Important Contacts	44
Websites.....	45
Glossary	46
Parent feedback	47
Tell us what you think	48



Welcome from the Head Teacher



Dear Parent/Carer

On behalf of all staff at Newmains Primary School I am delighted to welcome you and your child to our school.

Newmains Primary School provides high quality learning experiences which encourage all our pupils to be involved in their learning and the life of the school. We believe learning should be fun, enjoyable and challenging while encouraging pupils to develop into successful learners and confident individuals who are able to make effective contributions and be responsible citizens in all aspects of life. Everything we do at Newmains is built around our school vision:

We are an ambitious school, where everyone works well together, and feels part of the Newmains Team.

I am sure that your child will benefit fully from the experiences Newmains Primary School has to offer. We regularly share learning experiences and achievements through Seesaw, School website and social media platforms.

Your role in your child's education is vital and we look forward to building positive relationships with you to ensure your child has the best possible experience and for you play an active role in our school community.

I hope that you will find this handbook informative and useful. If at anytime you wish to discuss any aspect of your child's education, please do not hesitate to contact us.

Yours sincerely

A handwritten signature in cursive script that reads 'Louise Dunn'.

Louise Dunn
Head Teacher

Renfrewshire Council

More than 4,000 voices including our staff, local residents, partners, young people and community groups helped identify the values most important to us all that describe our promise to our communities, staff and partners and what people can expect of us.

These values have been formally adopted by Renfrewshire Council and will guide how we deliver services and make decisions every day.

- We are **fair**. We treat each other and everyone we deal with respectfully and work hard to build trust in Renfrewshire Council
- We are **helpful**. We care about getting things right and are always approachable
- We are great **collaborators**. We work as one team and with people who care about this place
- We value **learning** to help us innovate, improve and deliver better services

School Aims

Vision

We are an ambitious school, where everyone works well together, and feels part of the Newmains Team

Values

We are Caring – You are all welcome at Newmains. We are an inclusive school that values the diversity and uniqueness of our pupils and community. We are a nurturing school, and we value caring relationships. We work in partnership with parents and carers to help provide a caring and welcoming environment.

We are Kind – We act with kindness towards each other, we value each other, and we respect each other. We are honest and we will always try to make amends for unkind behaviour. We speak to others in a kind way and we support each other to show kindness to the wider world we are part of.

We are Fair– Everyone gets the help they need at Newmains. We believe that everyone should get equal opportunities and recognise that some may need extra support in order to get this. We champion Children’s Rights at Newmains and we will always address unfair treatment, language and actions.

We strive for Success – We recognise that success means different things for different people. We measure success in terms of effort, hard work, commitment and in building relationships. We will support you to achieve your success. We help develop resilience and are ambitious for our pupils. We encourage and support leadership at all levels in the school.

Aims

By ‘Working Together’ we mean the school staff, pupils, parents and carers and the wider community.

- We aim to work together and support one another as we strive for success.
- We aim to work together to create a welcoming, inclusive and nurturing community.
- We aim to work together to be kind, respectful and fair.
- We aim to listen to our pupils and value their contribution to who we are as a school.

Through our values, we influence children’s learning, behaviour, relationships and the choices they make. We will nurture and forgive each other; we will help our children manage relationships and behaviour in a way that reflects our values. We are a Team at Newmains.

We care about what is happening to others and recognise our role as global citizens. The care, love and concern we show for each other extends to our families, our community and the wider world.

Service Pledges

Standards and expectations

We will:

- offer all children and young people in our catchment area a free school place
- provide school premises which meet health and safety standards
- provide information on your child's progress
- provide religious and moral education for your child
- give support and encouragement for parents to be involved in school life
- provide regular information on school activities
- provide 25 hours of class contact time in each normal school week for pupils of primary-school age

Pupils will have opportunities for:

- personal and social development
- music, cultural activities and creativity
- access to healthier lifestyles and sports activities
- community involvement

You can also expect us to:

- provide formal written reports on your child's progress
- provide an annual report on school progress within our Standards and Quality Report
- give you an opportunity to have a formal meeting with your child's class teacher
- strive to meet your child's needs

How can you help?

By law, you must make sure your child receives an education.
As a parent/carer, you can help your child by:

- making sure your child goes to school regularly
- encouraging and supporting your child with any homework/home study given
- encouraging your child to respect the school and the whole school community
- being involved in the school

The Education (Scotland) Act 1980 uses the broadly framed definition of 'parent'. This is as follows:

“Parent” includes guardian and any person who is liable to maintain or has parental responsibilities (within the meaning of section (13) of the Children (Scotland) Act 1995) in relation to or has care of a child or young person.

This is a wide definition which might, by way of example, include:

- non-resident parents who are liable to maintain or have parental responsibilities in respect of a child
- carers who can be parents
- others with parental responsibilities, e.g. foster carers, relatives and friends who are caring for children and young people under supervision arrangements
- close relatives, such as siblings or grandparents caring for children who are not looked after or are under home supervision arrangements

Everyone who is a parent, as defined in terms of the 1980 Act, has rights under the Act. This includes the right to receive advice and information about their child’s education, general information about the school, to be told about meetings involving their child, and to participate in activities, such as taking part in decisions relating to a Parent Council. Education authorities and schools should treat parents equally, the exception to this general requirement being where there is a court order limiting an individual’s exercise of parental rights and responsibilities. It is for education authorities to advise schools on the application of these rights in individual cases.

About Our School

School staff

Head Teacher, Depute Head Teachers and Principal Teachers

Mrs Louise Dunn

Head Teacher

Overall responsibility for the school



Mr Ger McGauley

Depute Head Teacher

Deputises for Head Teacher

Responsible for Health and Wellbeing including P.E, RME, Exp Arts

Pupil Support Co-ordinator
Pastoral Care P4 - P7



Miss Susan Gillon

Depute Head Teacher

Deputises for Head Teacher

Responsible for Sciences, Technology, Mathematics and Numeracy and Social Subjects.

Professional Learning Co-ordinator
Pastoral Care P1 - P3



Mrs Gillian Hall

Mrs Sheryll Pickering

Principal Teacher (Job Share)

Responsible for Writing, Reading, Play Pedagogy, Eco School Programme, Modern Languages, Outdoor Learning, Fairtrade and Rights Respecting Schools, NQT mentoring.



Class Teachers

Miss SJ Cameron
Mrs A Carlin
Mr B Chapman
Mrs A Crawford
Mrs K Dallas
Mrs L Greenhill
Miss E Herd
Mrs S Jackson
Mrs A Kirkpatrick
Miss N Lafferty
Miss M Leitch
Mrs M Peacock
Miss S O'Docherty
Mrs Al Simpson
Mrs Au Simpson
Mrs K Watts

Other Staff in the school

Mrs A McNeil
Mrs J Jose
Miss L Termini
Miss K Weir ASNA
Mrs E Millar ASNA
Mrs L Provan ASNA
Mrs L Skinner ASNA

Clerical Assistants

Ms L Hanratty
Mrs A Merchant
Miss K Pinkett

Business Support Officer

Ms Meldrum

Environmental Services Staff

Senior Facilities Operative

Mr C Lincoln

Senior Facilities Operative

Mr D Guild

Visiting Staff

Family Wellbeing Worker	Gary Bruce
Active Schools Coordinator	Mr A Dougan
Educational Psychologist	Mrs L Henderson
Brass Instruments	Mr P Stone
Chanter Instruction	Ms C MacDonald
School Chaplin	Rev P Wallace
EAL	Ms H Douglas

School Information

School contact details

Newmains Primary School
Lang Avenue
Renfrew
PA4 0DA
Tel: 0300 300 0172

School email address: newmainsenquiries@renfrewshire.gov.uk

School website: blogs.glowscotland.org.uk/re/newmains

Twitter: @NewmainsPS

Facebook: Newmains PS

Parent Council contact details

Chairperson: Thomas Sneddon
Email address: newmains.parentcouncil@gmail.com

School roll

Newmains Primary School has a planning capacity of 448. The present roll is 406, arranged in stages from P1-P7.

Parents should note that the working capacity of the school may vary dependent upon the number of pupils at each stage and the way in which the classes are organised.

All stages of Primary education are covered from Primary 1 – Primary 7.

School Information

The current role at each stage is:

P1 - 46	P2 - 51	P3 - 66	P4 - 68	P5 - 66
P6 - 59	P7 - 50			

The school hall and dining room are available for evening lets to groups and organisations. To apply for a let please see the section on School Lets.

The school is accessible to all people via a ramp and an automatic door at the school office. There is a lift to the upper floor, a disabled toilet and entrance ramp. A dedicated parking space is available to ease access for disabled staff, parents and pupils.

School day

Newmains Primary School – School Hours

Open:	9.00 am
Interval:	10.30 – 10.45 am
Lunch:	12.15 – 1.00 pm
Close:	3.00 pm

Primary 1 pupils attend school on a full-time basis from the first school day in August.

School year

First Term	In-service Day	Wednesday 14 August 2024 (IS)
	In-service Day	Thursday 15 August 2024 (IS)
	Schools re-open	Friday 16 August 2024
	September Weekend	Friday 27 September 2024 and Monday 30 September 2024 (inclusive)
	Schools re-open	Tuesday 1 October 2024
	In-service Day	Friday 11 October 2024 (IS)
	October holiday (schools closed)	Monday 14 October 2024 to Friday 18 October 2024 (inclusive)
	Schools re-open	Monday 21 October 2024
	St Andrew's Day	Monday 2 December 2024
	Schools re-open	Tuesday 3 December 2024
	Last day of session	Friday 20 December 2024
	Christmas / New Year Schools closed	Monday 23 December 2024 to Friday 03 January 2025 (inclusive)
	Second Term	Schools re-open
In-service Day		Friday 14 February 2025 (IS)
Mid-term break		Monday 17 February 2025 to Tuesday 18 February 2025 (inclusive)
Schools re-open		Wednesday 19 February 2025
Spring Holiday Schools closed		Monday 7 April 2025 to Monday 21 April 2025 (inclusive)
Third Term	Schools re-open	Tuesday 22 April 2025
	May Day	Monday 05 May 2025
	Schools re-open	Tuesday 06 May 2025
	In-service Day	Friday 23 May 2025 (IS)
	Local holiday (schools closed)	Monday 26 May 2025
	Schools re-open	Tuesday 27 May 2025
	Last day of session	Friday 27 June 2025

Teachers return Wednesday 14 August 2025

School in-service days

- Wednesday 14 August 2024
- Thursday 15 August 2024
- Friday 11 October 2024
- Friday 14 February 2025
- Friday 23 May 2025

School Uniform

Renfrewshire Council encourages each school to adopt a dress code and for any proposed changes to be discussed with parents, pupils and the parent council. The council supports an agreed dress code because of the benefits it brings, including improvements in safety, security, discipline, ethos and community spirit, and a decrease in bullying and expense for parents.



Some types of clothing will not be allowed in school for reasons of safety, decency or indiscipline. Types of clothing which will not be allowed include:

- clothes which are a health or safety risk
- clothes which may damage the school building
- clothes which may provoke other pupils
- clothes which are offensive or indecent
- clothes which encourage the use of alcohol or tobacco, or other inappropriate substances

Pupils will not be deprived of education, any benefit or access to examinations because of not wearing school uniform.

In the interests of health and safety, of both individual and others present, all jewellery, including body jewellery, must be removed before taking part in physical education lessons or physical activities. This includes watches, rings, chains and belts with metal buckles and other body jewellery and must all be removed before the physical education lesson, as these may cause injury to the wearer and others.

It is preferred that parents are advised that any child having body jewellery piercing wait until the summer break to allow them time to heal. However, parents wishing children to wear body jewellery during physical education should write to the school expressing their request. Children will be expected to provide tape and cover any such items of jewellery during the activity. Pupils will be responsible for the safekeeping of jewellery.

Grants for footwear and clothing for children are available to parents receiving certain benefits. Please see the council's website:

<http://www.renfrewshire.gov.uk/Freeschoolmealsandclothinggrants>

Information and application forms for free school meals are available from Renfrewshire Council. A form can be downloaded from the council's website:

<http://www.renfrewshire.gov.uk/Freeschoolmealsandclothinggrants>

Please help the school and the education authority by making sure that pupils do not bring valuable or expensive items of clothing to school. The council has no insurance to cover the loss of valuable items.

Newmains School Uniform

Pupils in Newmains are encouraged to wear school uniform at all times.

This comprises of:

Grey skirt/trousers/pinafore/shorts

White polo shirt or white shirt and tie

School sweatshirt/cardigan (Royal Blue)

Blue and white checked summer dress

For special occasions such as class photographs, school concerts or school choir performances, we respectfully ask that pupils wear a white shirt and school tie.

Gym shoes, shorts and polo shirt must be worn for P.E. In the interests of safety and hygiene no jewellery is permitted to be worn during P.E. lessons. Pupils wearing earrings may cover them with tape.

We encourage children to be outdoors as much as possible during breaks and where learning opportunities arise, it is therefore important that pupils come to school suitably dressed for our ever changing weather. Waterproof jackets should be available and leggings/jogging trousers may be worn for outdoor P.E.

Parents are asked to name all items of clothing, which makes it easier to be returned. Un-named items will be taken to our lost property area.

Registration and Enrolment

The date for registration of new school entrants is advertised in all local nurseries, national and local press and on the council's website www.renfrewshire.gov.uk. It is normally in November each year. Pupils should be registered in only one school for their catchment area. Parents will be provided with information about the school when they register their child. Parents who want to send their child to a school other than the catchment school must make a placing request. Information on how to make a placing request is contained in the leaflet 'Sending your child to school.' The leaflet is available from any school, by phoning our customer contact centre on 0300 300 0300, or on our website www.renfrewshire.gov.uk. It is important to note that a successful placing request into a primary school does not guarantee a successful placing request when a child is transferring to secondary school.

Parents of pupils who have moved into the catchment area or, who wish their child to transfer to the school, should contact the school office for information.

Induction procedures for pupils starting school and their parents

Our aim is to make your child's transition to Primary One a happy and enjoyable experience. In order to achieve this, we try to get to know your child and also help you to prepare your child for school. If your child has attended one of the local nurseries, a member of our staff

will have visited the nursery, spoken to the staff and spent some time with your child. As part of our transition programme, we are inviting your child to visit the school and join in short play sessions.

Parents will be advised of parent meetings and pupil induction days during the spring and summer terms.

Class Organisation

We project that there will be 11 straight classes and 4 composite classes in Newmains. A pupil may not remain in the same class throughout their primary school career as this depends on the number of children at the different stages each session. The children are taught in a variety of groups including social and ability. Children also have opportunities to work independently and in collaborative groups.

The maximum class sizes are as follows:

P1 - **25** P2-P3 - **30** P4-P7 - **33** Composite classes - **25**

Assessment and Reporting

Assessment is an integral part of learning and teaching. It helps provide a picture of the learner's progress and achievements and identifies the next steps in learning.

Seesaw is used throughout the school to inform parents and carers regularly of learning experiences undertaken and areas of success for each child.

Teachers in Newmains Primary School consider and plan teaching and assessment together as complementary aspects of lessons and activities. Pupils play a key role in this process and are given the opportunities to assess their own and others' successes and progress and help to determine their next steps. Assessment for Learning (AfL) strategies are utilised to give positive and constructive feedback to pupils.

Parents and pupils are invited to attend Pupil Progress Meetings and Learning Conversations several times throughout the year with a full written report sent home in June.

Tracking learners' progress

Information on learners' progress is gathered through planned assessments and this information is recorded. This allows teachers to have a clear picture of how learners are progressing. It will also allow teachers to identify next steps in learning and inform reporting on progress and achievement.

Reporting

Annual reports to parents provide clear, positive and constructive information about their child's learning and progress, reflecting on what has been achieved against standards and expectations.

Summary of the School Improvement Plan

Strategic Improvement Priorities

Actions/Interventions

School Priority 1: Promote health and wellbeing for all and ensure Newmains is an inclusive and supportive environment.

School Priority 2: To raise attainment in reading and writing through targeted approaches.

School Priority 3: Focus on moderation and assessment of writing resulting in shared standards and increased attainment.

The Scottish Attainment Challenge

Attainment Challenge and Pupil Equity Funding (PEF)

The Scottish Attainment Challenge, launched in 2015, is about achieving equity in education. This can be achieved by ensuring every child has the same opportunity to succeed improving literacy, numeracy, health, and wellbeing, with a particular focus on closing the poverty-related attainment gap.

The Pupil Equity Fund (PEF) is being provided as part of the Attainment Scotland Fund. The PEF is allocated directly to schools and targeted at closing the poverty related attainment gap. Every council area is benefitting from the fund and is based on the number of pupils in P1-S3 known to be eligible for free school meals. The funding is to be spent at the discretion of the head teacher working in partnership with parents, pupils and staff to devise plans which focus on closing the poverty-related attainment gap.

Other Information

Transfer to primary

Before leaving their early learning and childcare setting, a transfer of information record for each child will be prepared by staff to ensure a smooth transition and continuity of education for the child transferring to primary.

Your child will be supported in the transition from nursery to primary school. This will include processes such as sharing of information about your child's progress through the transfer of information document, joint curricular experiences with the primary school, visits to the primary, all of which help to ensure a smooth transition and continuity of learning for the child transferring to primary.

Transfer to Secondary School

Pupils normally transfer to secondary school between eleven and a half and twelve and a half years of age, so that they will have the opportunity to complete at least four years of secondary education. Parents will be informed of the arrangements no later than December of the year before the date of transfer.

Parents who want to send their child to a school other than the catchment school must make a placing request. Information on how to make a placing request is contained in the leaflet 'Sending your child to school.' It is important to note that a successful placing request into a primary school does not guarantee a successful placing request when a child is transferring to secondary school.

Newmains Primary School is an associated primary school of Renfrew High School

Head teacher: Mr Andrew Sutherland telephone: 0300 300 1414

Car parking

Two dedicated parking spaces are available to ease access for people with disabilities. Please do not use this space/these spaces without authorisation. When using these spaces, we ask you to proceed with extreme caution as there are children who enter the school through the car park at all times.

Please show care and consideration when in the vicinity of the school. Cars should not park on the yellow zigzag lines outside the gates. The school has a restricted parking area that is only for staff parking. Pupils must not be dropped off or collected within the school grounds unless by prior arrangement with the Head Teacher.

At peak times it is requested that all school traffic avoid parking in Lang Avenue. Broadloan, Newmains Road or Sandy Road should be used at these times.

Care and welfare

Your child's welfare is central to the ethos of the school. Please contact the school to share any concerns you have about your child's welfare or wellbeing. The staff will work with you as parents to make sure children are safe, happy and able to benefit from the educational opportunities we offer.

School security

Renfrewshire Council has procedures to ensure the safety and security of pupils and staff when attending or working in a school. We use a number of security measures including a visitors' sign in book, badges and escorts, while visitors are within the school building. Normally, anyone visiting a school for any reason, will be asked to report to the school office. The school staff can then make the necessary arrangements for the visit.

Attendance and absence

It is the responsibility of parents of a child of school age to make sure that their child is educated. Attendance is recorded twice a day, morning and afternoon.

Please let the school know if your child is likely to be absent for some time, confirming the reason for absence. If there is no explanation provided from a child's parents, the absence will be regarded as unauthorised.

Please make every effort to avoid family holidays during term time as this disrupts your child's education and reduces learning time. The head teacher can approve absence from school for a family holiday in certain extraordinary situations. Please discuss your plans with the head teacher before the holiday. Absence approved by the head teacher on this basis is regarded as authorised absence. If the head teacher does not give permission before the holiday, it will be recorded as unauthorised absence.

Parents from ethnic minority communities may request that their children be permitted to be absent from school to celebrate recognised religious events. Absence approved by the head teacher on this basis is regarded as authorised absence. Extended leave can also be granted on request for families returning to their country of origin for cultural or care reasons.

A supportive approach is taken to unexplained absence. The education authority, however, has legal powers to write to, interview or prosecute parents, or refer pupils to the Reporter to the Children's Panel, if necessary.

Bullying

Renfrewshire Council has an anti-bullying policy which was developed in consultation with pupils, parents and staff. The policy provides guidance on the prevention, identification and management of bullying – both the bullying behaviour and the impact it has.

Our school also has its own anti-bullying policy which sets out our local approach to tackling bullying. You can request a copy of the Council's policy and/or the school's policy from the school office or access them online at <http://www.renfrewshire.gov.uk/article/3469/Anti-bullying>

If you have a specific concern about bullying, please report this to the school so that we can investigate and take any action that might be needed.

Safeguarding including child protection

All children have a right to be protected from harm, abuse and neglect. The vision of the Renfrewshire Child Protection Committee is that "it's everyone's job to make sure that children in Renfrewshire are safe."

Renfrewshire Council has a child protection policy and guidelines in place to make sure that all staff receive training each year and are confident in responding to any child protection or safeguarding issue, including e-safeguarding, child sexual exploitation and radicalisation. Staff ensure the wellbeing of children they come into contact with and work closely with other agencies to protect children and keep them safe. All school staff must report any concerns they have about the welfare of children to the school's child protection co-ordinator Mrs Dunn.

Mobile phones

The benefits of mobile phones are recognised. Many young people and their parents regard them as an essential means of communication. Mobile phones can continue to be brought into schools, however the following limitations will apply in Renfrewshire schools.

- All phones should be turned off and kept out of sight during the school day within the school campus.
- Photographing or recording of sound or images of staff, other pupils or visitors to the school is not allowed at any time within the school campus or on school transport.
- Mobile phones may be confiscated where these rules are broken.
- Any recordings made on school premises or school transport found on confiscated phones must be deleted on their return.
- Any photographs or recordings of staff in any situation, whether taken on school premises or elsewhere, found on confiscated phones must be deleted from phones on their return.
- Children's Services expects that schools will, through normal collegiate procedures, develop or review existing policies on the use of mobiles phones that take account of the views of all staff, parents and pupils.
- Schools should ensure that pupils, parents and staff are aware that should a pupil breach the policy, there will be consequences in line with the school's positive behaviour/relationships policy.
- Individual school policies should clearly state for the benefit of staff, pupils, parents and visitors any variations from the restrictions on use of mobile phones set out below.
- Pupils and parents should be notified that mobile phones will be confiscated where these limitations are breached.
- Smartphones introduce additional challenges for schools and parents. Pupils and parents should be aware that this also leaves pupils open to dangers such as cyber bullying, grooming and access to inappropriate material. Parents are encouraged to read the anti-bullying policy for further guidance.
- Staff should not delete photographs or recordings from confiscated mobile phones.
- When staff confiscate mobile phones or other devices, they should ensure that these are retained in a safe place that cannot be accessed by others. This may be a lockable drawer or cupboard, a base area or a delegated area in the school office. Confiscated mobile phones should normally be passed to the school office or senior member of staff as soon as possible after confiscation.

Legal Aspects

- There are a number of aspects of the law that may apply to mobile phone misuse and the responses to that misuse. In the most serious cases there may be a crime involved – an incident that is being filmed might be an assault or breach of the peace. The misuse of a mobile phone might be an offence under the Communications Act 2003, if it involves a call or message that is grossly offensive or is of an indecent, obscene or menacing in character; and the distribution of certain pornography might be an offence under the Civic Government (Scotland) Act 1982.
- In situations which are so serious that a school might contact the police, it is for the police, and not the school to consider what, if any, criminal offence may apply.

These restrictions on use apply equally during any school activity that takes place off campus.

Pupils breaking the rules will be disciplined in line with the school's positive behaviour or relationships policy.

School meals

All Primary 1 – Primary 5 children are automatically entitled to a free school meal. Children of parents receiving certain benefits, are entitled to a free midday meal. Information and application forms for free school meals, can be found at registration offices, customer service centres or may be downloaded from the council's website: <http://www.renfrewshire.gov.uk/schoolmeals>

Children who are also entitled to free school meals are entitled to free milk at lunchtime. For Primary 6 and Primary 7 pupils, the school operates a cashless cafeteria system at lunchtime in the dining hall. All meals currently cost £2.35 and are to be paid for through Renfrewshire Council's ParentPay Online System: www.parentpay.com

As part of our Health and Wellbeing curriculum we teach children about the benefits of a healthy balanced diet. Please assist us by discussing menu choices with your child.

Pupils from Primary 1 to Primary 7 eating their own packed lunches will be accommodated in the Dining Hall with the children from their class. Promoted staff are present in the Dining Hall. Pupils who go home for lunch should be collected from the main school entrance.

If your child has special dietary requirements, please contact Mrs Dunn who will be happy to discuss this with you.

We are a nut free school and therefore foods such as coconut, peanuts, nutella etc should not be given for snacks or packed lunches.

Breakfast Club

Our breakfast club is available every day from 8.20 am. Children will be checked in by staff when they arrive. If a child arrives at the breakfast club at 8.45 am, it will not be possible to offer a full breakfast due to time constraints, however, children will be offered toast/milk. The club offers cereals, toast, milk and juice. This must be paid through Renfrewshire Council's ParentPay Online System. **Your account must be in credit at all times.**

Children from Primary 3 to Primary 7 will leave the breakfast club at 8.45am and go to the playground to line up. Members of staff are in the playground to monitor children from 8.45am. Primary 1 and Primary 2 are taken to their classroom at 8.55 by a member of staff.

The numbers for the Breakfast Club are restricted to 66 pupils per day. Newmains breakfast club is very popular and is always over-subscribed. We will strive to allocate places as fairly as possible. All families, who request a place at the breakfast will be given at least one day, however, it may not be possible to allocate all the days that you request. Applications for breakfast club are opened up in June of each year, parents will be contacted when the link is live.

School transport

Renfrewshire Council's current policy is to provide home to school transport to all primary school pupils who live more than 1.609 kilometres (1 mile) from their catchment school by the recognised shortest safe walking route. Parents who think they are eligible can get an application form from Children's Services in Renfrewshire House, Paisley or online at <http://www.renfrewshire.gov.uk/article/3486/Home-to-school-transport>. These forms should be completed and returned before the end of February for those pupils beginning school in August to allow appropriate arrangements to be made. However, parents may make an application at any time.

In special circumstances, the Director of Children's Services has discretion to grant permission for pupils to travel in transport provided by the education authority, where spare places are available, at no additional cost to the authority.

Addresses eligible for free transport to Newmains Primary:

Afton Drive - from 42 & 77 (excluding nos. 135 to 157)	
Crammond Avenue	
Dochart Avenue	Gadie Avenue
Kirkaig Avenue	Leander Crescent
Lossie Crescent	Tanar Way

Pick-up points

Where home to school transport is provided, some pupils will require to walk a reasonable distance from home to the transport pick-up point, but this should not exceed the authority's agreed limit of 1.6 kilometres (1 mile).

It is the parent's responsibility to make sure that their child arrives at the pick-up point on time and behaves in a safe and acceptable manner while boarding, travelling on and leaving the vehicle. Children who misbehave can lose their right to home to school transport.

Placing requests

You should be aware that if we grant your placing request, we are not required to provide a school bus pass or any other help with transport.

Assisted support needs

Renfrewshire Council may provide home to school transport for children assessed to attend any school because of their Additional Support Needs. We also provide seat belt and wheelchair restraints needed to transport pupils.

Playground Supervision

An adult presence is provided in playgrounds at break times, as required by law. The SFO has the duty of being in the playground at intervals and at the beginning and end of each school day. Classroom assistants and Additional Support Needs assistants also supervise the children at intervals and lunchtimes. Promoted staff may also be in the school playground. Staff on duty in the playground have two-way radios to maintain security contact with management and clerical staff inside the building. Children are expected to behave in a responsible manner at all times during interval and lunchtimes. During summer months pupils will be allowed to play on the playing field area, but in the inclement weather of the winter months, they will be restricted to the tarmac playground area.

Pupils leaving school premises at breaks

Schools have a duty to look after the welfare of their pupils. This includes taking reasonable care of pupils' safety during intervals and lunchtimes.

Renfrewshire Council recommends that pupils should not leave school grounds at intervals. Primary pupils should only leave at lunch times when they are going home for lunch, with their parents' agreement. Parents should encourage their children to follow these rules in the interests of safety.

Equalities

Renfrewshire Council is committed to ensuring that all employees, customers and partners are treated fairly and with respect at all times. We are committed to promoting equality and tackling discrimination through the way services are planned, delivered and purchased. The council promotes and encourages a culture whereby equality of opportunity exists across all the protected characteristics of age, disability, race, gender reassignment, pregnancy and maternity, religion and belief, marriage and civil partnership, sex and sexual orientation.

School education is open to all pupils and all reasonable measures will be taken to make sure that the curriculum is available to every child. The Equality Act 2010 introduced a new public sector general equality duty which requires Scottish public authorities to pay 'due regard' to the need to:

- Eliminate discrimination, victimisation, harassment or other unlawful conduct that is prohibited under the Equality Act 2010.
- Advance equality of opportunity between people who share a characteristic and those who do not.
- Foster good relations between people who share a relevant protected characteristic and those who do not.

In line with UNCRC, in Renfrewshire we place the human rights and needs of every child and young person at the centre of education.

The council supports the right of each citizen to a quality of life which is free from violence, discrimination and harassment. The council will take steps to ensure that all citizens, regardless of race, ethnic or national origin, religion, social background, marital status, gender, disability, age or sexuality have full access to its services, taking all possible measures to prevent discrimination in the way its services are delivered.

Parents can help to monitor our success in promoting equality of opportunity for all by providing equalities related information when asked.

In Newmains Primary School we are committed to ensuring that equality lies at the heart of the school. We encourage all of our children to work hard to achieve their full potential as written in our vision. We discourage any kind of discrimination and have expectations of our pupils to value and respect all members of the school community.

Newmains was proud to be awarded the UNCRC Gold School award in June 2023.

Medical and Health Care

Medical examinations are carried out at various times during a child's primary school years. As parents, you will be given notice of these and encouraged to attend, except for vision and hearing tests and dental examinations. Parents will be told about any recommended action or treatment. All examinations are carried out by NHS Greater Glasgow and Clyde.

Parents should notify the school of any medical requirements or allergies that their child may have. Wherever possible, where a child requires medication, it is better if this is provided outside of school hours. In cases where it is necessary that the child receives medication during school hours, parents should contact the school to make appropriate arrangements. School staff are under no obligation to give medicines to pupils and staff will advise parents of local arrangements. Where appropriate, schools will support parents in helping children and young people learn the life skills which allow them to manage their own healthcare needs.

Minor accidents are dealt with by the school's qualified first aider(s) or appointed person. If a pupil takes ill or has an accident at school which requires that they be sent home or for treatment, the school will provide first aid and contact parents. It is very important that the school has up to date contact details for all parents and an additional contact person in case parents can't be contacted. This information should be current, and the school notified of any changes. We will not send children home from school unaccompanied.

In the event of a serious illness or accident, a member of staff will accompany the child to a doctor or hospital and parents will be notified immediately.

Religious Observance

Our school is fortunate to have a close link with the local church. The minister assists with the Christianity element of Religious and Moral Education and provides opportunities for religious observance. Parents have the right to withdraw their child from religious observance and should inform the school in writing.

In addition, parents and carers from religions other than Christianity may request, in writing, that their children may be permitted to be absent from school in order to celebrate recognised religious events.

Religious and Moral Education

At Newmains we will foster moral standards and try to develop in your child positive attitudes to work and to other people.

Our programme allows the children to gain knowledge of major world religions including Christianity, Judaism, Islam, Hinduism, Buddhism and Sikhism and gain an insight into the ways of life of people all around the world.

.

Wet weather arrangements

During wet intervals and lunchtimes the children will remain indoors as long as they behave in accordance with the rules which are made to ensure their safety. Primary 7 monitors and Playground Buddies are present in each class and support staff are placed in designated areas to supervise. The Senior Leadership Team is also available throughout the school during wet weather intervals.

Curriculum Matters

School curriculum

Scotland's curriculum – Curriculum for Excellence (CfE) – helps our children and young people gain the knowledge, skills and attributes needed for life in the 21st century.

Curriculum for Excellence places learners at the heart of education. At its centre are four fundamental capacities. These capacities reflect and recognise the lifelong nature of education and learning. The four capacities are aimed at helping children and young people to become:

- Successful learners
- Confident individuals
- Responsible citizens
- Effective contributors

The National Improvement Framework, updated annually, sets out the vision and priorities for Scottish Education that have been agreed across the system, and the national improvement activity that needs to be undertaken to deliver those key priorities.

Crucially, it sets out a clear **vision** for Scottish Education:

- Excellence through raising attainment and improving outcomes: ensuring that every child and young person achieves the highest standards in literacy and numeracy, as well as the knowledge and skills necessary to shape their future as successful learners, confident individuals, responsible citizens, and effective contributors.

- Achieving equity: ensuring every child and young person has the same opportunity to succeed, no matter their background or shared protected characteristics, with a particular focus on closing the poverty related attainment gap.

The Key priorities of the National Improvement Framework are:

- Placing the human rights and needs of every child and young person at the centre of education.
- Improvement in children and young people's health and wellbeing.
- Closing the attainment gap between the most and least disadvantaged children and young people.
- Improvement in skills and sustained, positive school-leaver destinations for all young people.
- Improvement in attainment, particularly in literacy and numeracy.

Broad General Education

In Newmains it is our aim that all children will have access to a Broad General Education through which they will experience outcomes in:

Literacy, numeracy and health and wellbeing – responsibility of all; and

Literacy, numeracy and modern languages, sciences, social studies, expressive arts, technologies and religious and moral education.

Curriculum for Excellence

Curriculum for Excellence is Scotland's curriculum for children and young people aged 3-18. It's an approach designed to provide young people with the knowledge, skills and attributes they need for learning, life and work in 21st century. Please follow the link below for more information on Parent Zone: <http://www.education.gov.uk/parentzone/learning-in-scotland/>

Play Pedagogy

Children in Primary 1 and Primary 2 are given opportunities to learn through a play-based approach. They work and play in an environment which enhances their natural curiosity, problem solving skills and creativity.

"To a child play is about having fun, but to society, it is much more. Play is essential to healthy development from birth to adulthood, contributing to capacity for learning, resilience and the development of cognitive, social and emotional skills"

Play Strategy for Scotland- Scottish Government

Children in Primary 1 and Primary 2 are given opportunities to experience play in tandem with whole class, group and individual teaching and learning.

Our approach to Literacy, Numeracy, Health and wellbeing and Modern Languages

Our curriculum programme follows the Curriculum for Excellence guidelines. Listening, talking, reading and writing programmes of study are followed.

A variety of texts and resources are used in classrooms. Oxford Reading Tree, Jolly Phonics, Literacy World, North Lanarkshire Active Phonics, Nelson Spelling, Nelson Handwriting and Talk for Writing are used to supplement the teacher's own resources which often link to other areas of the curriculum in P1 – P7.

The art of communication through language is of vital importance in everyday life and your child will be given a highly structured programme in Language Learning. To encourage further reading, the children also have the opportunity to take part in National Reading Events including World Book Day, Scottish Book Week and Paisley Book Festival. We also have close links with Renfrew Library.

Reading

We use Oxford Reading Tree, Big Cat, Accelerated Reader and Literacy World as our main reading resources. These resources are supplemented by a wide range of readers, reference books and fiction.

Pupils are taught to read using North Lanarkshire Active Phonics which is a carefully constructed phonics programme. As part of Renfrewshire's Literacy Programme, the children are coached in reading where they are taught and encouraged to use different strategies when reading new books. Children in P4-P7 are taught Readers Response strategies allowing children to gain a deep understanding of literature.

Learning to read involves learning to say the words as well as understanding the meaning of the words. The importance of reading as a means of communication is stressed and the children are encouraged to develop a personal reading habit which should give them much pleasure through life. We encourage children to read for pleasure in the class and at home. This is supported by a programme call Accelerated Reader. Children in P3-7 are assessed and advised which books best suit their abilities. These books are available from the school library. After reading the books the children complete a quiz. Teachers can use this data to monitor progress and highlight individual reading needs. Teachers also regularly read to the children in class. Throughout the school year all children will have the opportunity to visit Renfrew Library to hear stories and borrow books.

Writing

Writing is a major part of the curriculum and along with reading, listening and talking, makes a significant contribution to the development of children as thinkers and learners.

Throughout the school we use the Talk for Writing approach where the children use a variety of texts to inspire, model and structure their own writing. We have a high expectation of the use of core writing skills.

We value writing and work hard to achieve high standards from all children within a positive writing ethos.

Literacy skills have a significant impact on self-esteem, motivation and aspirations for the future.

We aim to:

- have a positive writing ethos throughout the school so that pupils develop confidence and pleasure in writing
- teach writing through a structured programme which develops a variety of writing styles and techniques
- teach writing in a structured way to ensure progression, continuity and consistency
- link planning, teaching and assessment in every writing lesson in order to raise levels of attainment/achievement in writing throughout the school
- teach writing through the Talk for Writing approach which helps the children become better speakers, listeners, readers, writers and thinkers
- to expose children to a variety of text and enable them to internalise and imitate generic language patterns before innovating and applying their own ideas

Handwriting

The handwriting scheme we use is Nelson Handwriting and is based on linked script. The letters are formed individually by children in P1 but in P2 the children are taught to link certain letters. It is important that children use the correct letter formation to help with this. By the end of P4 the children should be linking words with a continuous form with a couple of exceptions.

Talking

Our aim is to move from the language of conversation to the written language. Children are encouraged to be clear, fluent and confident speakers. Many activities are used to improve talking skills, e.g. co-operative learning, class and group discussions.

Listening

It is important for children to listen in order to learn, communicate and socialise. We encourage children to listen for particular pieces of information such as instructions. Listening is a key feature of the Talk for Writing and PATHS programme and for their enjoyment of stories.

Modern Foreign Languages

All pupils from Primary 1 to Primary 7 have the opportunity to learn French. Primary 5, 6 and 7 will also experience some Spanish vocabulary. This can be used within daily class routines as well as being taught as a discrete subject. To further promote foreign language learning the children may participate in the European Day of Language and Scotland Loves Languages. The experiences offered to the children focus on culture and vocabulary.

Numeracy and Mathematics

Numeracy and Mathematics is important in our everyday lives. It allows us to make sense of our world and to manage our lives. Numeracy and Mathematics also provides essential analytic, problem-solving and decision-making skills that can be used across the curriculum.

The key areas of study in Numeracy and Mathematics are:

- Number, Money and Measure
- Shape, Position and Movement
- Information Handling

Pupils develop their skills in Numeracy and Mathematics through:

- Stages of Early Arithmetical Learning (SEAL) programme
- Concrete, Pictorial, Abstract (CPA) approach
- Play Pedagogy
- Active Learning opportunities
- Structured approaches to the development of mathematical knowledge and skills through the use of the Teejay maths and Heinemann Active Maths programme
- Use of Technology
- Independent and collaborative learning
- Problem solving activities
- Use of relevant contexts and experiences
- Taking part in school, local and national events

Staff at Newmains Primary School take responsibility to develop, reinforce and extend learning in Numeracy and Mathematics across all other areas of the curriculum and in real life situations.

Health and Wellbeing Education

Health and Wellbeing is embedded in our school life to ensure children and young people develop the knowledge and understanding, skills, capabilities and attributes which they need for mental, emotional, social and physical wellbeing now and in the future. Learning through Health and Wellbeing enables children and young people to:

- make informed decisions in order to improve their mental, emotional, social and physical wellbeing
- experience challenge and enjoyment
- experience positive aspects of healthy living and activity for themselves
- apply their mental, emotional, social and physical skills to pursue a healthy lifestyle
- make a successful move to the next stage of education or work

- establish a pattern of Health and Wellbeing which will be sustained into adult life, and which will help to promote the Health and Wellbeing of the next generation of Scottish children; and for some, perform at high levels in sport or prepare for careers within the health and leisure industries.

Health and Wellbeing in schools covers:

- Mental, emotional, social and physical wellbeing
- Planning for choices and changes
- Physical education, physical activity and sport
- Food and health
- Substance misuse
- Relationships, sexual health and parenthood.

PATHS

In Newmains we use PATHS (Promoting Alternative Thinking Strategies) which empowers all children to develop the fundamental social and emotional learning skills. It also enables children to make positive choices throughout life and is designed to facilitate the development of self-control, emotional awareness and interpersonal problem-solving skills.

Relationships, Sexual Health and Parenthood

Relationships, Sexual Health and Parenthood (RSHP) is a key element of the Health and Wellbeing Curriculum and helps prepare children for changes in their body and relationships.

Newmains Primary School is committed to the provision of high quality RSHP Education in accordance with Local and National Guidelines. We use the RSHP Scotland toolkit which is a progressive programme from Nursery to S6. This toolkit recognises the vital role parents and carers play in RSHP Education and can be accessed at www.rshp.scot

Other subject areas

Social Studies

A balance is maintained, giving your child the chance to study people, past events and societies; people, place and environment; and people, society, economy and business. While there is a body of knowledge that we hope the children will acquire it is important that children learn the skills and concepts necessary to solve the problems which confront people in day to day living. The children are required to think, enquire and solve problems. We also integrate discussion, role-playing activities, reading, writing and researching.

We also use the themes for cross curricular learning where topics are used as the main context of learning e.g. The Romans, The Vikings, etc. During the course of each child's school experience there will be many activities relating to Scotland – history, land, culture and society.

Sciences

Learning in the sciences enables pupils to develop curiosity and understanding of the environment and their place in the living, material and physical world as well as the skills of scientific inquiry and investigation using practical techniques. In addition, pupils recognise the impact the sciences make on their life, the lives of others, the environment and on society while developing an understanding of the Earth's resources and the need for responsible use of them.

The key elements of the Science Curriculum come under the following headings:

- planet earth
- forces, electricity and waves
- biological systems
- materials
- topical science

Technologies

In developing technologies, a range of different contexts for learning will draw on important aspects of everyday life and work. This includes creative, practical and work-related experiences and outcomes in craft design, food and information technologies.

All pupils have access to iPads and Chromebooks and use these to learn ICT skills which can be used across the curriculum. Our aim is to help pupils gain the confidence and skills to embrace and use new technologies now and in the future, at home, at work and in the wider community. Our Smart Boards and Promethean boards are also used to enhance lessons.

Expressive Arts:

Music

Children in all stages of the school participate in singing, music making and are encouraged to give constructive comments about pieces of music they hear.

Children in P6 and P7 have the opportunity to learn to play a brass instrument depending on talent shown.

Links with NYCOS (National Youth Choir of Scotland), where a specialist teacher visits younger classes to teach singing, rhythm and sound.

A chanter teacher also provides tuition to some children in the upper primaries.

Art and Design

In the early years we wish children to gain control of line making tools such as pencil, crayon or pen. This work progresses through the school with the result that the children learn to express themselves visually through a variety of media including paint and collage. Art lessons are often inspired by famous artists and usually focus on a visual element e.g. line, shape, colour, tone, form, pattern and texture. This work is displayed throughout the school.

Drama

Drama involves the children in many activities such as memory games, mime, acting, role-play etc.

Dance

Children experience learning in different types of dance from traditional Scottish ceilidh dancing to modern dance.

Scottish Culture

We encourage children to learn about Scotland's Culture, People, Heritage and Language thereby connecting Scotland with its place in the world past and present.

Every January the children will be involved in Scottish Week where they will be encouraged to learn about a variety of important aspects of Scottish life.

Our rich Scottish language is celebrated every year with a Scots Verse Competition. Each child is given the opportunity to learn a poem in Scots and recite it to the class with winners being selected to recite to the whole school.

This operates from P1 to P7 and enables the children to build upon previous knowledge of Scots poetry and culture.

Additional Support for Learning

Getting it Right for Children and Young People in Renfrewshire

We want all our children and young people to be fully supported as they grow and develop.

Children's well-being is important at every stage of childhood.

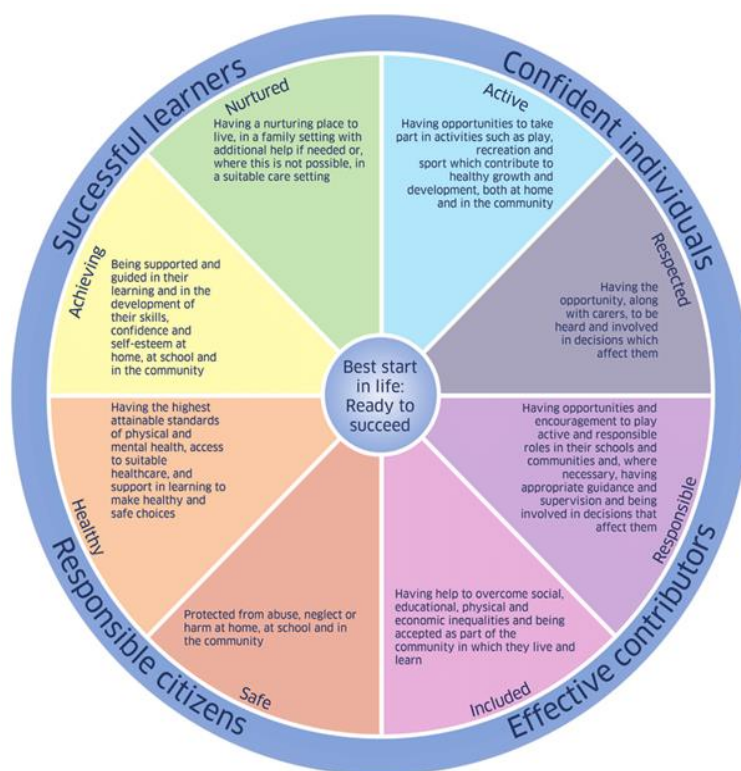
There are 8 areas of wellbeing which they need to progress to do well now and in the future. Every child needs to be healthy, achieving, nurtured, active, respected, and responsible, and, above all, safe. These are the eight indicators of well-being (SHANARRI) which are set within the 'four capacities' which are at the heart of the Curriculum for Excellence

Renfrewshire's GIRFEC policy ensures that children, young people, and their families receive the help they need when they need it. As children and young people progress on their journey through life, some may have temporary difficulties, some may live with challenges and some may experience more complex issues. Sometimes they – and their families – are going to

need help and support.

The Getting it Right for Every Child (GIRFEC) approach ensures that when we provide support, it is based on the level of need for each child.

For schools in Renfrewshire the GIRFEC approach is implemented via the Getting it Right for Every Learner policy which gives more detail of additional support needs and help children receive from schools and other services.



For children, young people, and their families, the GIRFEC approach will mean:

- They will feel confident about the help they are getting.
- They understand what is happening and why.
- They have been listened to carefully and their wishes have been heard and understood.
- They are appropriately involved in discussions and decisions that affect them.
- They can rely on appropriate help being available as soon as possible.
- They will have experienced a more streamlined and co-ordinated response from practitioners.

Inclusion

Renfrewshire's inclusive approach affords all children and young people the opportunity to be

part of their learning community, boosting their emotional wellbeing and aiding the development of social skills. This approach is based on the core inclusive value of providing education for children within their own community as much as possible. Wellbeing assessment and individual planning is in place for all young people who require additional support.

The Regulation Station is an area established within the school for children who require specific social, emotional and/or behavioural support. The children will access The Regulation Station for both self-regulation and/or support for learning.

Support

The needs of the child or young person should always be central to the identification, planning and provision of support. Support should be appropriate, proportionate and timely.

Universal support

Universal support starts with the ethos, climate and relationships within every learning environment. It is the responsibility of all practitioners and partners.

An environment which is caring, inclusive, fair and focused on delivering learning to meet individual needs will encourage all children and young people to strive to meet their learning potential.

Personal learning planning is at the heart of supporting learning. The conversations about learning, reviewing progress and planning next steps are central to this process. Planned opportunities for achievement which focus on the learning and progress made through activities across the full range of contexts and settings in which the curriculum is experienced also contribute to the universal aspect of support. In addition, all children and young people should have frequent and regular opportunities to discuss their learning and development with an adult who knows them well and with whom they have a mutually trusting relationship. This key member of staff has the holistic overview of the child or young person's learning and personal development.

Targeted support

Children and young people can benefit from additional or targeted support, tailored to their individual circumstances. This could be at any points of their learning journey or throughout the journey.

Barriers to learning may arise from specific learning difficulties, disability, social, emotional or behavioural needs, bereavement or family issues.

Targeted support also encompasses children and young people requiring more choices and more chances to achieve positive, sustained post-school destinations.

This 'targeted' support is usually, but not exclusively, delivered by staff with additional training and expertise.

There are various ways in which it may be identified that a child would benefit from additional or targeted support and early detection is key. These include teacher professional judgement, screening and diagnostic testing.

If specific learning difficulties are suspected, the permission of parents/carers may be sought to refer their child to an external partner e.g. Educational Psychologist Service for further investigation.

A single or multi agency child's plan is constructed for each child with additional support needs. The main purpose of this document is to outline individual targets for the pupil and detail the specific supports that will be put in place to help them achieve these.

We utilise a wide variety of resources, programmes of work, initiatives, learning tools and the expertise of partners and external agencies to assist our pupils with additional support needs.

As Pupil Support Co-ordinator Mr McGauley is the main contact for pupils with additional support needs.

Independent sources of information and advice nationally include -

Enquire – the Scottish advice service for additional support for learning

Telephone – 0345 123 2303

Email – info@enquire.org.uk

Resolve (Children in Scotland) - Resolve: ASL is an independent mediation service for parents and carers of children and young people with additional support needs.

Telephone – 07955 788967

Email – resolve@childreninscotland.org.uk

Educational Psychology Service

Educational Psychologists (EPs) support equity, inclusion and attainment and deliver evidence-based intervention to support pupils' wellbeing in Renfrewshire's schools, nurseries and other learning centres.

EPs work with teachers, parents and support staff to help children and young people make the most of their lives and support schools, nurseries and other learning centres to improve and develop supportive healthy learning environments through approaches such as the Renfrewshire Nurturing Relationships Approach, Language and Communication-Friendly Environments, Video Interaction Guidance and Non-Violent Resistance.

Our schools have a system in place for monitoring and reviewing the progress of all our young people and we have a link educational psychologist who visits on a regular basis and is part of the extended support team. When concerns are raised about a child or young person, the schools take action to address these concerns and may involve a link EP. Parental permission will always be obtained before we request to involve the link EP.

Specialist support service – teachers teaching in more than one school

We have a number of teachers who work in nurseries and schools to provide specialist support to children and young people who have a range of additional support needs. These teachers work with teachers within the nursery or school to plan and deliver an appropriate curriculum. The service also provides staff development and advice on resources.

The teams support the additional needs of:

- children with a significant hearing and or visual impairment
- children with English as an additional language who are at the early stages of learning English
- care experienced children and young people and those experiencing discontinuity in their learning
- children and young people with a range of additional support needs

Homework

Homework is an integral part of learning and teaching. It provides children and young people with the opportunity to develop self-reliance, self-discipline, self-confidence and be responsible for their own learning. It also strengthens the link between home and school by supporting parents and carers to share in the learning process. Homework can take many forms and will reflect the age, stage and area of learning currently being undertaken by your child. It will be issued on a regular basis and will be varied, meaningful and interesting.

Newmains Primary School has a homework policy based on Renfrewshire Council's policy and guidance. You can request a copy of this policy from the school office.

Pupils are given a small amount of homework to do on a regular basis, instructions for this are noted on Seesaw or in booklets. Homework will vary in type as the child progresses through the school but may include reading practise, associated reading follow-up, spelling/dictionary, maths and research work.

The time taken to do homework will vary according to the age of your child. Normally homework for younger children should take 15 minutes at most. Older children would be expected to spend up to 30 minutes, particularly when homework includes researching and reporting on topic study work. In some classes, pupils will be given homework tasks to complete on a weekly basis.

Homework Tips:

- Help your child to succeed by providing a quiet place to work.
- Encourage both reading aloud and silently at home.

- Remember to ask your child lots of questions as part of their reading.
- Help your child with number facts and times tables on a regular basis.
- Regularly read stories to your child.
- Remember that both written and unwritten homework is valuable.
- Ensure that homework is regularly completed and handed in on time.
- If you experience homework problems, contact the school at once.

Developing the Young Workforce

Developing the Young Workforce [Determined to Succeed] is our strategy to develop the business and employability skills in young people.

It lies at the centre of curriculum for excellence and promotes a wide range of opportunities for our children and young people aged 3-18 to become successful learners, confident individuals, responsible citizens and effective contributors.

The four main areas are:

- Enterprising learning and teaching
- Entrepreneurial learning
- Work-based vocational learning
- Career education

The themes are built around the main areas:

- Supporting the development of skills for life and skills for work
- Engaging employers
- Broadening the reach of the programme
- Embedding enterprise in the curriculum
- Building capacity
- Enhancing our international profile

Enterprising activities will be organised to reflect the age and interests of our pupils.

The range of activities can include:

- Links and partnerships with businesses, colleges, and schools abroad
- Fundraising events organised and run by pupils
- Fairtrade activities
- Joint school and community initiatives
- Work experience placements and speakers

Extra-Curricular Activities

These activities rely in part for their success upon the enthusiasm, talents and time of available

staff and will vary accordingly. The school encourages pupils to participate in a range of sporting, leisure and cultural activities, a number of which are delivered through partnership initiatives. Our Active School Coordinator, Arron Dougan, organises a variety of sporting activities at lunchtimes and after school on set days. Examples of these are basketball, volleyball, badminton, jogging, rugby and football.

A Residential Activity week is arranged by the school for P7 pupils and is currently held at Ardentenny. This involves the children in a range of outdoor activities which are led by instructors from the centre. This is a very popular week for the children and the adults who accompany them.

Primary 6 pupils are trained as play leaders in term 3. This is with a view to running clubs from August onwards.

Staff in the school also organise committees which include all pupils and staff who work on areas such as: Playground Champions, Eco Committee, Sports Ambassadors, Pupil Council, House Captains, Reading Leadership Group, Rota Kids and Digital Leaders. Every child has the opportunity to have their voice heard.

Newmains has very close links with West College in Paisley. Children in most stages participate in different sporting activities at Renfrew Sports Centre as they work with staff and students from West College.

Newmains Primary also has a well-equipped gym hall and a sports field with space for primary sized football and hockey pitches. The geodesic climbing frame and trim trail, funded by Awards for All, are timetabled to ensure safe and regular playing for all ages of pupils. Primary 1 have access to a climbing chute and coloured pencils, there is a mini timber trail for Primary 2 and a spider climbing frame, two hoops and two climbing walls in our upper school playgrounds. This equipment was funded by a community grant which was obtained by our Parent Council.

Visits are organised by class teachers to complement topics. such as a visit to Finlaystone, Vikingar, Science Centre and many more. Visiting specialists are also invited to the school to enhance topics the children are studying.

Masterclasses

Each year the children have the opportunity to choose a masterclass offered by staff from across the school. These help the children to develop new skills and make new friends. It offers an opportunity for vertical learning as children are mixed from P1-P3 and P4-P7. Masterclasses ensure that all children at Newmains have an opportunity to join groups and take part in creative activities (article 15 and 31 of the UNCRC respectively)

Home School Community Links

Newmains Primary School has many links and partnerships with our local community. Parents are welcome to participate in the life of the school. Our staff run parent workshops on different

aspects of the curriculum. We encourage all our parents to attend the workshops.

Communication between parents and the school is very important when developing partnerships. There are a variety of ways in which we communicate with parents such as newsletters, texts, letters home, telephone calls, Twitter, Facebook and Seesaw.

Over the session we have various opportunities for parents to meet the teachers to discuss progress, successes and concerns. We also organise induction programmes for when children move from nursery to Primary 1 and from Primary 7 to S1. In term two we have an open afternoon when families are invited to visit the school to see learning based on a w/ theme.



Parental Involvement

Newmains Parent Council

By law, schools have a duty to promote parents' involvement in their child's education and our school encourages parents to:

- be involved with their child's education and learning
- be active participants in the life of the school
- express their views on school education generally and work in partnership with their child's schools

Every parent who has a child attending our school is automatically a member of the Parent Forum. As a member of the Parent Forum, each parent can expect to:

- receive information about the school and its activities
- hear about what partnership with parents means in our school
- be invited to be involved in ways and times that suit you
- identify issues you want the parent council to work on with the school
- be asked your opinion by the parent council on issues relating to the school and the education it provides
- work in partnership with staff
- enjoy taking part in the life of the school in whatever way possible

The Parent Forum elects a smaller group of parents to form the Parent Council. Parent Councillors may be involved in:

- supporting the work of the school
- gathering and representing parents' views to the head teacher, education authority and Education Scotland
- promoting contact between the school, parents, pupils, and the local community
- fundraising
- organising events

- reporting to the parent forum
- being involved in the appointment of senior promoted staff
- providing a representative to the National Parent Forum of Scotland

Parent council chairs can attend the Parent Council Liaison Group, which gives parent councils an opportunity to speak with elected members and senior managers from the Council about issues relating to education in Renfrewshire. These meetings take place four times a year and details are sent to Parent Council chairs at the start of each new academic year.

We would love for you to get involved, you can:

- come along to our regular Parent Council Meetings
- help out at our fundraising events (discos, fayres)
- contribute to our online surveys by emailing us at newmains.parentcouncil@gmail.com
- sign up to easy fundraising
<http://www.easyfundraising.org.uk/newmainsprimaryschoolrenfrew>
- add us on Facebook – Newmains Parent Council

For more information on parental involvement or to find out about parents as partners in their child's learning, please contact the school or visit the Parentzone website at:

<https://education.gov.scot/parentzone>

<https://www.npfs.org.uk/>

Whole Family Wellbeing

The School Family Wellbeing Team is one of the services that supports children and families in Renfrewshire. They will work with young people and families where additional help is required to make sure children and young people can make the most of their school experience. They can help families with issues such as school attendance, managing relationships and any barriers to learning. They will attend team around the child meetings to agree how they could contribute to your child's wellbeing plan.

Parents are fully involved, with an initial home visit to discuss the referral and updates on progress reviewed and evaluated on a regular basis.

Support is also offered to pupils who are identified as anxious during times of change, such as moving from nursery to primary, primary to secondary and secondary to further education or employment. These can be stressful times for both pupils and parents and the school family wellbeing team can support parents and the school to work together to ensure a smooth transition and help children and young people learn how to cope with change.

The school family wellbeing service is a non-statutory service and staff work in partnership with parents or carers, school staff and other agencies, including counselling and support

services, health, social work, community learning and development, and other identified local voluntary and government agencies.

Pupil Council

The Pupil Council is a way of giving a say in the way our school is run and enables them to make changes for the better in our school. The children are voted by their peers to represent them at Pupil Council meetings to listen, discuss, share views and vote on actions that need to be taken. The Children will also help to organise charity events throughout the year.

Community Links

Newmains Primary takes great pride in being part of the wider community and pupils have a sense of identity and pride in their school.

The current school programme involves children learning about their local community. To this end we encourage visitors from the local community to talk about their work or other interesting subjects. For example, we invite our community police officer to talk to the children about looking after the local area.

We believe that the school should play an important role in the community in order that our pupils learn to take up their role as responsible citizens of society and this community in particular. Examples of our normal involvement include:

- Links to Renfrew North Church
- Visits to Renfrew Leisure Centre
- Links to West College
- Renfrewshire Foodbank involved in Harvest Festival
- Renfrew Rotary – Rotakids club
- Tesco, Sainsbury's and Morrisons – links to different topics
- Visits to Renfrew Library
- Links to Renfrew High and the other cluster schools and nurseries
- Raising money to support local and national charities
- Using sports facilities within the town and High School to expand our pupils' involvement in competitive sporting events
- Using the facilities of the town e.g. Post Office, Health Centre etc as enrichment for local topic studies
- Entering and being successful in local and national competitions
- Our partnership with Monkdyke House and Renfrew Care Home
- Fareshare
- Links to YMCA – centre visits
- Links to George Leslie Ltd

We invite local groups to attend school concerts and to share in events we hold throughout the session. Staff and pupils also raise money for charity through fund raising or donating money from various activities.

School Lets

Our school may be used in the evenings by various adult and youth groups in the community.

The sale and/or consumption of alcohol on school premises is prohibited. No applications for occasional licences by the school, Parent Council or other party hiring or using the school premises should be made to allow for the sale of alcohol on school premises.

To apply to use school facilities, contact OneRen. Contact details are in the important contacts section at the end of this handbook.

Other Useful Information

Listening to learn - complaints, comments and suggestions

Renfrewshire Council encourages feedback on its services from parents and pupils as part of our overall commitment to giving the best possible service and to working in partnership. We are interested in feedback of all kinds, whether it be compliments, suggestions or complaints.

If you want to register a comment of any type about the school you can do this by writing, telephoning or making an appointment to see someone. All feedback is welcome and keeps us in touch.

If, in particular, you have a complaint about the school, you can submit this by writing, telephoning or making an appointment to speak with the Headteacher. It is better that these things are shared openly and resolved fairly, rather than being allowed to damage the relationship between the family and the school. There will be no negative consequences from making a complaint and we will deal with the issue confidentially. If we have made a mistake, we will apologise quickly and clearly and try to put things right.

Stage 1 complaint:

- Complaints about the school should be directed to the Head Teacher in the first instance.
- It is helpful if you can give some details of the issue and ask for an early appointment to discuss it.
- We want to resolve complaints as quickly as possible. You will get a decision on your complaint in five working days or less, unless there are exceptional circumstances. If it is going to take longer than five working days, we will let you know.

Stage 2 complaint:

- If you are not happy with the response to your complaint, you have the right to take it further and submit a complaint to Children's Services. This is also known as a stage 2 complaint. You can do this by completing a complaints form (available from the school or any council office), fill in the online form via your 'my account', write to us, email us at complaints@renfrewshire.gov.uk, or call us on 0300 300 0170. At this stage, we will carry out an in-depth investigation. We will acknowledge receipt of your complaint within three working days and give you a full response within twenty working days. If the

investigation is going to take longer than this, we will contact you to inform you.

- If you remain dissatisfied following the stage 2 outcome, you can contact the Scottish Public Services Ombudsman and our response will include the contact details.
- You should also note that you have the right to raise unresolved concerns with your local councillor, MSP or MP.

Data Protection

Information on pupils, parents and guardians is stored on a secure computer system and may be used for teaching, registration, assessment and other administrative purposes. The information is protected by data protection laws, including the UK General Data Protection Regulation (UK GDPR) and the Data Protection Act 2018, and can only be shared or disclosed in accordance with those laws. To find out more about how your personal information is used, please consult the Council's general Privacy Policy, here:

<https://www.renfrewshire.gov.uk/article/2201/Privacy-policy>

Pupils attending any type of school have a right of access to their own information by virtue of the Data Protection Act 2018. This is known as the right of subject access. When a child cannot act for themselves or the child gives permission, parents will be able to access this information on their behalf. The Pupils' Educational Records (Scotland) Regulations 2003 give parents and carers a specific right of access to their child's educational records. You can find out how to make a Subject Access Request or a request for Educational Records, by visiting the Council's Data Protection page, here: <https://www.renfrewshire.gov.uk/article/2059/Data-protection>

For specific data protection queries, please contact the school directly.

Information in Emergencies

We make every effort to maintain a full educational service, but on some occasions, circumstances arise which lead to disruption. Schools may be affected by severe weather, traffic and transport disruption, power failures or fuel shortages. In such cases, we will do all we can to let you know when we are closing and reopening the school or nursery.

We use a variety of methods to keep you updated in emergency situations including e-mails seesaw, our schools digital newsletter, text messages, the school and council websites and Renfrewshire Council's social media channels (Facebook - renfrewshirecouncil and X (Twitter) - @RenCouncilNews).

Further information may also be provided through letters, announcements in the local press, local radio, or notices in local shops, churches and community centres.

Please ensure we have the most up-to-date emergency contact information for your family and you are following the council's social media channels. You can sign up for the school's digital newsletter via www.renfrewshire.gov.uk/e-alerts.

Important Contacts

Director of Children's Services

Janie O'Neill	Renfrewshire House Cotton Street Paisley PA1 1LE	Email csdirector@renfrewshire.gov.uk Phone: 0141 487 0885
---------------	---	---

Homelink Service

c/o West Primary School
Newton Street
Paisley
PA1 2RL

Senior Home Link Workers

Email
morag.mcguire@renfrewshire.gov.uk
pamela.mckechan@renfrewshire.gov.uk
Phone: 0300 300 1415

Community Learning & Development

Community Facilities Section	OneRen 3 rd Floor Renfrewshire House Cotton Street Paisley PA1 1LE	Email comfac@renfrewshire.gov.uk Phone: 0300 300 1430
------------------------------	--	---

Adult Learning Services	West Johnstone Shared Campus Beith Road Johnstone PA5 0BB	Email als.els@renfrewshire.gov.uk Phone: 01505 382863
-------------------------	--	--

Youth Services	West Primary School Newton Street Paisley PA1 2RL	Email youth@renfrewshire.gov.uk Phone: 0141 889 1110
----------------	--	---

Customer Service Centre

Customer Service Centre	Renfrewshire House Cotton Street Paisley PA1 1AN	Email customerservices.contact@renfrewshire.gov.uk Phone: 0300 300 0300
-------------------------	---	---

Websites

You may find the following websites useful.

- <https://education.gov.scot/parentzone/> - parents can find out about everything from school term dates to exam results. This site also offers information for nursery aged children and young people who have left school. It also lists relevant publications for parents and provides hyperlinks to other useful organisations
- <https://education.gov.scot/education-scotland/inspection-reports/> - parents can access school and local authority inspection reports and find out more about the work of Education Scotland
- <https://education.gov.scot/parentzone/my-school/> - parents can find out about individual schools. They can choose a school and select what type of information they need such as Education Scotland reports, exam results, stay on rates and free school meal entitlement
- <http://www.renfrewshire.gov.uk/> - contains information for parents and information on Renfrewshire schools
- <http://www.childline.org.uk/Explore/Bullying/Pages/Bullyinginfo.aspx> - contains information for parents and children on varying forms of bullying and provides help for parents and children who are affected by bullying
- <https://respectme.org.uk> - Scotland's anti-bullying service. Contains information for parents and children on varying forms of bullying and provides help for parents and children who are affected by bullying
- <https://education.gov.scot/> - provides information and advice for parents as well as support and resources for education in Scotland
- <http://www.equalityhumanrights.com/> - contains information for everyone on equality laws within the government and local authorities

Glossary

ASL – Additional Support for Learning

ASN – Additional Support Needs

CFE - Curriculum for Excellence

CLAD – Community Learning and Development

FOI – Freedom of Information

GIRFEC – Getting it Right for Every Child

HT/DHT – Head Teacher/Depute Head Teacher

PT/PST - Principal Teacher/Pastoral Support Teacher

LTS – Learning and Teaching Scotland

SIP – Service Improvement Plan

Although this information is correct at time of publishing, there could be changes affecting any of the contents before or during the course of the school year or in future school years.

Parent feedback

Please take a few minutes to fill in and return the questionnaire on the next page. Your feedback will help us improve the handbook next year.

Tell us what you think

Your feedback will help us to improve our handbook.

Did you find

Please tick

1. the handbook useful?

Yes No

2. the information you expected?

Yes No

3. the handbook easy to use?

Yes No

Please tell us how we can improve the handbook next year.

Name of school: _____

Thank you for filling in the questionnaire. Your views are appreciated. Please return this questionnaire to:

Planning & Policy Team

Children's Services, Renfrewshire Council

Renfrewshire House

Cotton Street

Paisley

PA1 1LE

email address: cshdatapolicy@renfrewshire.gov.uk