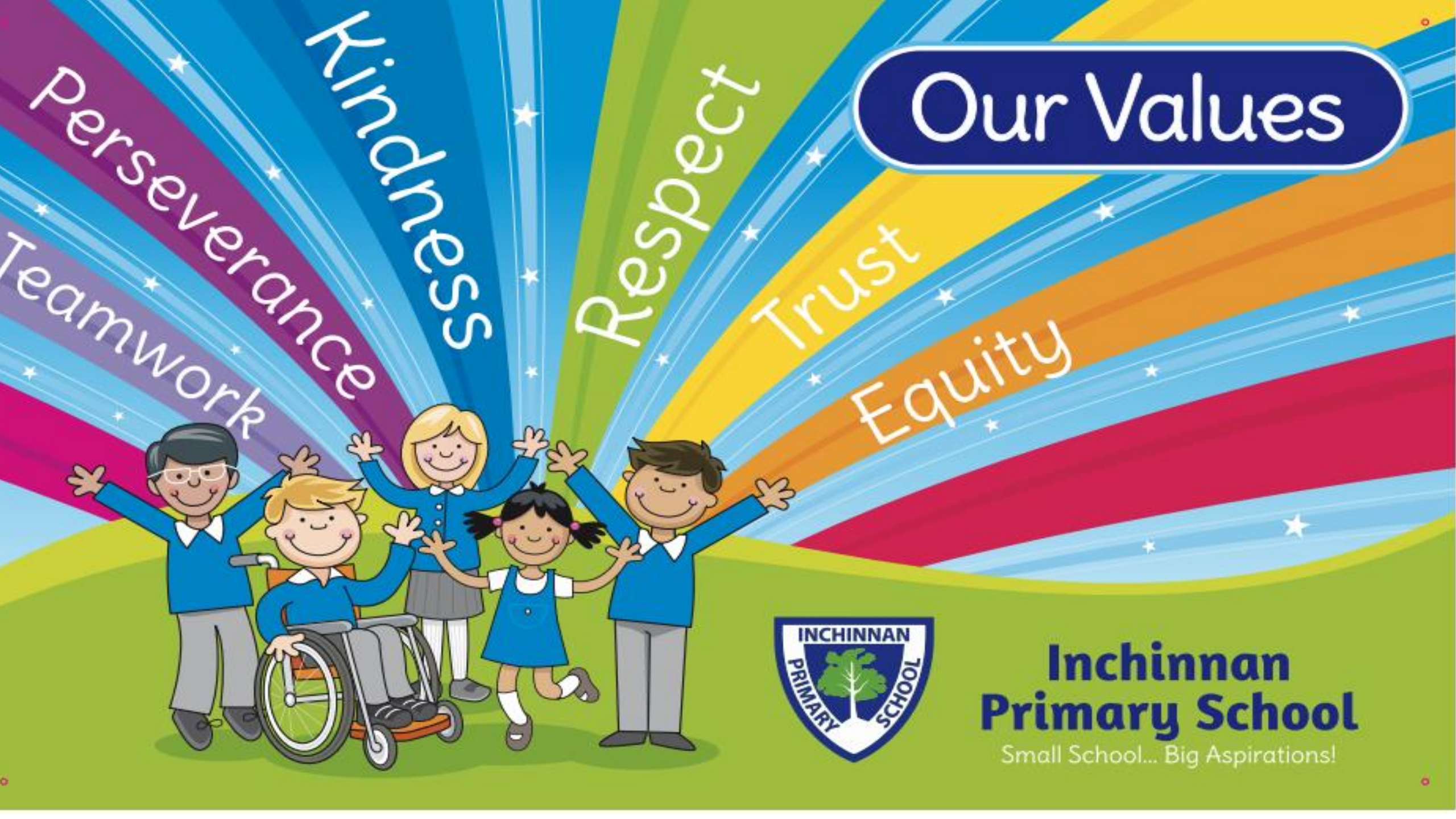


# *Welcome to Inchinnan Primary* *School*

1. Positive Relationships
2. Renfrewshire's Nurturing Relationship Approach
3. Input from staff.



# Our Values



Perseverance  
Teamwork

Kindness

Respect

Trust

Equity



**Inchinnan  
Primary School**

Small School... Big Aspirations!



## Children will: Demonstrate School Values

**Teamwork** We work together to celebrate each other's successes and support each other

**Perseverance** We try our best and reach our full potential

**Kindness** Use kind words and actions

**Respect** Treat others with respect

**Trust** Take responsibility for our actions and make good choices

**Equity** We value everyone's differences and we make sure that everyone is included

# How we promote positive behaviour at Inchinnan Primary:



Praise and encourage positive behaviour

Recognise and celebrate school values when we see them

House points

Weekly assembly which celebrate our school values

Golden Book

Praise Postcards

ACE awards

# What you will see in our classroom/playground

We use our values to guide us and we have a clear understanding of what is expected of us.

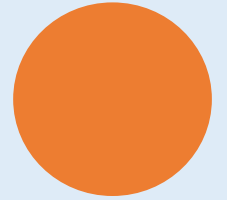
We will have non-verbal reminders first, then verbal reminders to help us make a positive choice.

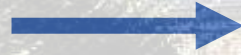
We will have a restorative conversation using consistent language

Adults will recognise and highlight positive behaviour first.

Adults will make space to help us regulate behaviour and help us to work through our thoughts

If we are feeling overwhelmed, we have a safe spaces inside the classroom we can go





# When I am feeling angry or finding it hard to manage my emotions...

An adult will help me manage the big feelings I am having.



I will have time to calm down if I need to.

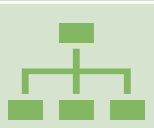


An adult will then help me to talk about what has happened and help me work out what to

# What adults around me will do when I am starting to feel



Give me a calming activity



Tasks will be broken down/varied



Movement break/drink



An adult will help me work through big emotions



Use a quiet space in our classroom

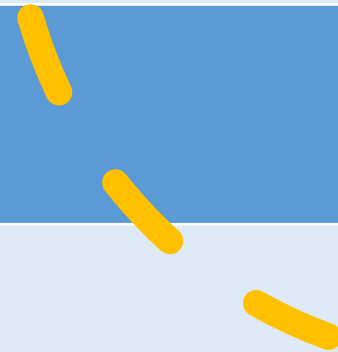
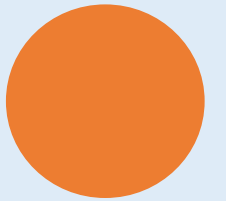
# Resolving breakdowns in relationships:

Restorative Conversation with adult

Reflection time

Fix-it folder

Partnership with Parents





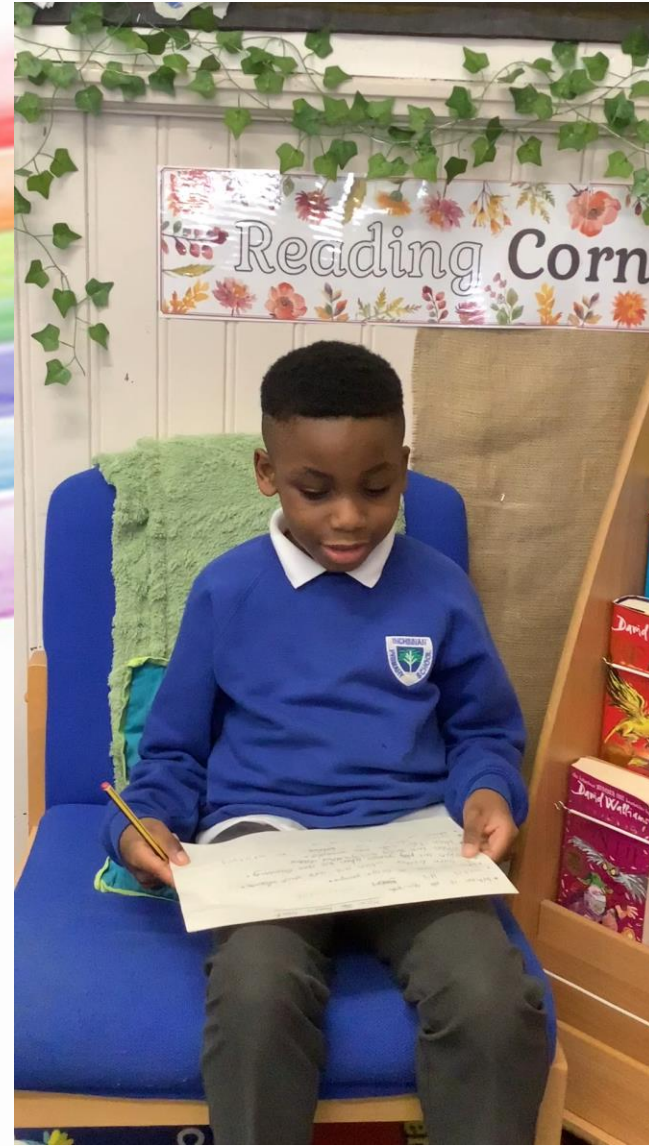
2024-2025



We are the  
Dream Makers



What we have achieved (2023-2024)



What we want to achieve.

3.50pm – 4.50pm

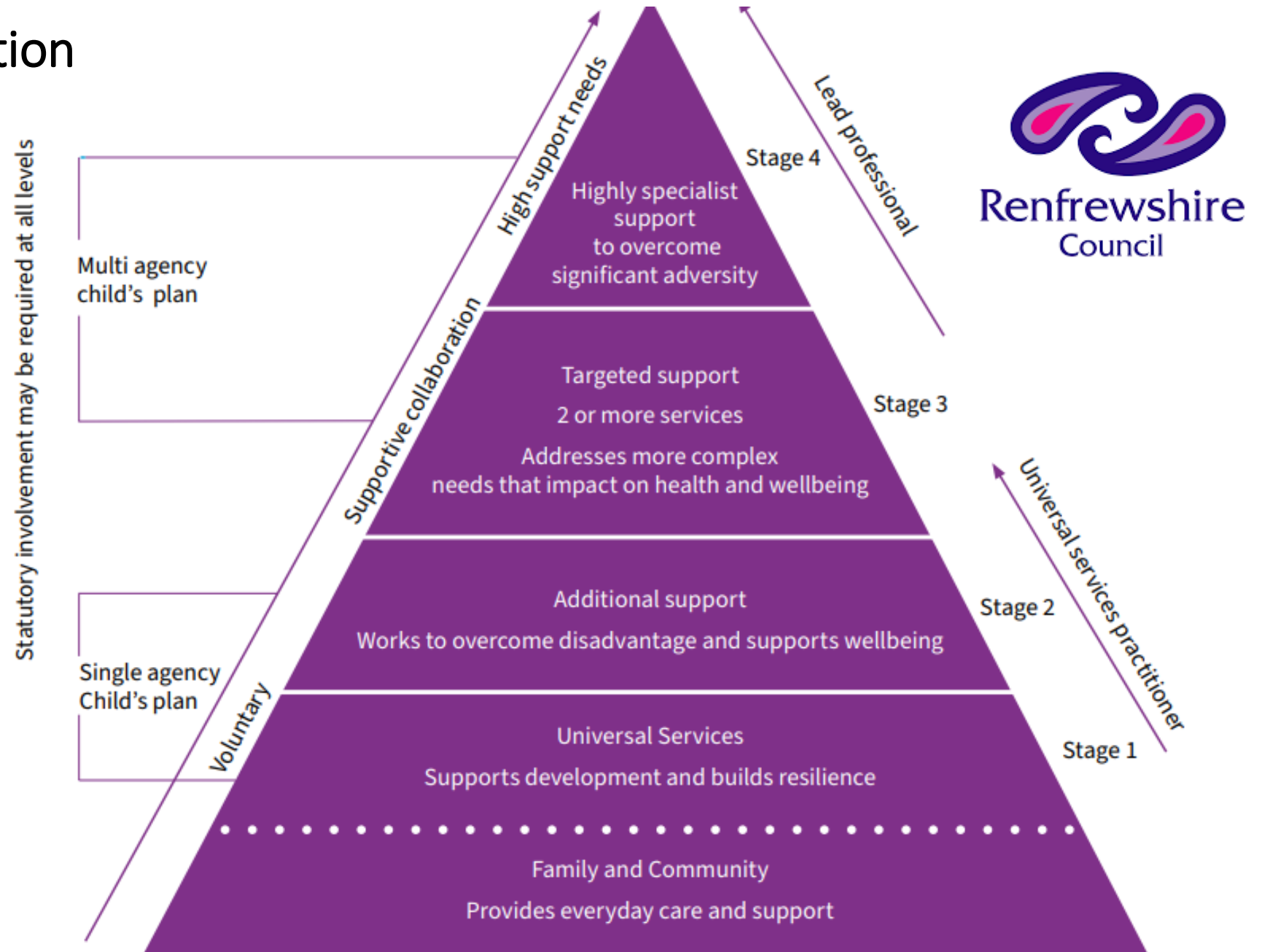
Please choose from the following inputs:

(15-minute rotations. Bell will be rung when it is time to move on).

Focus	Location
Internet Safety	Gym Hall
Health and Wellbeing	Primary 7 Classroom
Growth Mindset	Modular Classroom
Skills	Lunch Hall
Reading	Primary 6 Classroom
CIRCLE Framework Renfrewshire's Nurturing Relationship Approach	Library
Rights Based Learning	Primary 5 Classroom
Play in the primary classroom	Primary 1/2 Classroom
<b>Conclusion</b> 4.50pm – 5pm Universal Support (Kirsten Ross)	<b>Gym Hall</b>

# The Staged Intervention Framework

*Working together to get it right for children, families and communities—protecting, learning, achieving and nurturing. We want Renfrewshire to be a child-friendly authority.*



# Renfrewshire Council

## Single and Multi-agency Child's Plan

### Single and Multi-agency Child's Plan

- Strengths based/solution focused planning
- What is working well?
- What is getting in the way of the learning?
- Parent/Carer Voice
- Pupil Voice

<b>Name of Child/Young Person</b>

<b>Date of Birth</b>

Establishment	Please Select
Stage	
FME/CG	Please Select
SIMD	
SEEMiS Candidate Number	
CHI Number	
Staged Intervention Level	Please Select
Care Experienced	Please Select
Child Protection Register	Please Select
Coordinated Support Plan	Please Select
Date Plan Opened	
Archived Plan in Place	Please Select