

Bushes Vision, Values and Aims

"Blossom at Bushes"



To create the happy environment our school community needs to thrive, all stakeholders have established a clear Vision and set of Core Values as well as our aims for the whole school community.

Our Vision

We believe that all children are created equal and are owed the best we have to give. As a whole school community, we will work together tirelessly to develop and advance the unique set of skills and talents each of our pupils have and encourage every one of them to believe they can be successful and empower them to achieve amazing things.

Our Values are at the root of everything we do at Bushes:

Build each other up through **KINDNESS** and **FRIENDSHIP**

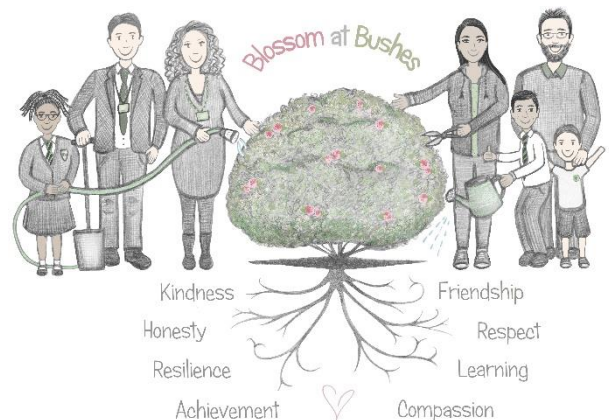
Uphold **HONESTY**

Share **RESPECT**

Have **RESILIENCE**

Encourage **LEARNING** and **ACHIEVEMENT**

Show **COMPASSION**



Aims for our Pupils

- To provide a happy, safe, stimulating, supportive and nurturing environment where children can meet their full potential as both learners and people, and can develop respect for themselves, others and their surroundings.
- To provide a rich, exciting and progressive curriculum which engages and motivates children and in which every child can develop fully as lifelong learners with skills to equip them for their futures.
- To encourage children to be independent, motivated, curious, creative and resilient learners who have a love of, and are capable of leading, their own learning.
- To provide children with the opportunities to contribute their voice to, and play an active role in, the School and ELC Class' development.
- To provide opportunities for every child to feel part of, and be able to positively contribute to, the school, local and global community, helping them to become responsible members of society.
- To actively promote good physical and mental health amongst all children.
- To celebrate children's achievements and ensure they receive recognition and praise for their efforts and achievements in all areas of their life, both within and out with the ELC and School.
- To provide equity for all children.

Aims for our Families and Community

- To provide a supportive and nurturing environment, working collaboratively and in partnership with parents and carers to help every child achieve their full potential.
- To empower parents and carers to play an active role in their child's education.
- To develop and sustain close links between parents and the local community to further children's learning.
- To promote, support, respect and value parental engagement in contributing to the ongoing development on the school.

Aims for our Staff

- To provide a supportive and nurturing environment wherein staff work collaboratively to provide the best educational experience possible for every child.
- To support them in keeping up to date with latest National and Council policies and procedures and continuing to develop their practice through Continual Professional Development opportunities.
- To nurture and respect each child as an individual and play an active role in their personal, as well as their educational development.
- To serve the community of Bushes with empathy, progressive learning and pride.

