

# Bishopton Primary



WELCOME TO DAY 2

P1 INDUCTION 2026/27

# Day 2

Vision and values

First days...

Uniform

Key school partners

Supporting learning

School lunches

PATHS & Nurture

Question time

Exit via P1 classroom doors





## P1 First day 9.10 am

---

- On this day you can bring two adults. You will have the opportunity to take family photos both outside and in the classrooms. We ask that you are mindful of uploading pictures of other people's children to social media.
- Staff will be on hand to escort the pupils into the school building. We will endeavour to have all P1 pupils in the building by 9.30.a.m.





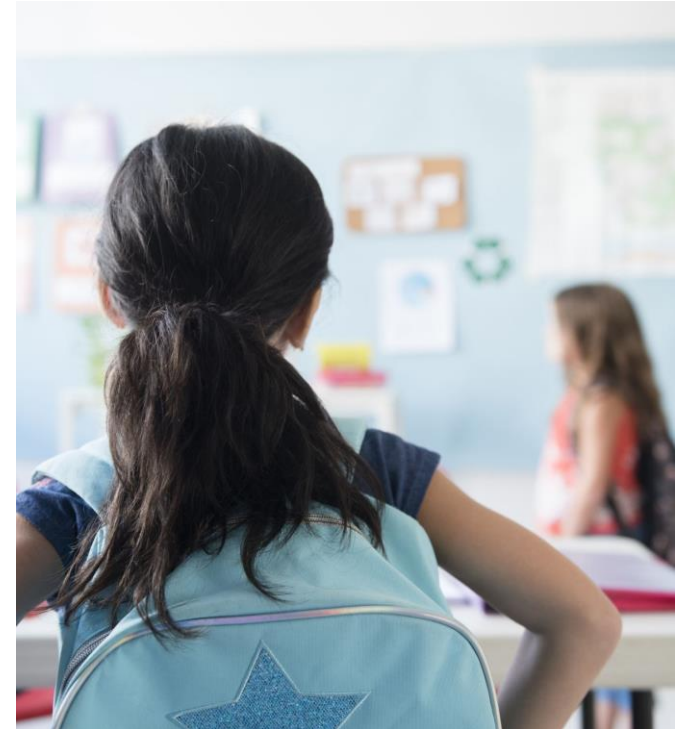
Please avoid the crush on the first day – it can be unsettling for your children.

**My first day at school**

# P1 Parents – From Tuesday 18<sup>th</sup> August 2026

---

- On subsequent days that week the classroom doors will be open from 9 a.m. (8.55am on wet days)
- Please leave your child at the classroom door with their teacher. Adults will be on hand to support. If there is a queue please wait with your child until they have entered the room.
- At the end of the school day teachers will bring the pupils to the classroom door at 3.15 p.m.
- Please only one adult per child and please stand well back from the doors at the fence.
- Teachers will only let the pupils go when their adult has arrived.





<https://blogs.glowscotland.org.uk/re/bishopton/>

*Please put the schools' phone number in your contacts!*

**0300 300 0147**



<https://www.renfrewshire.gov.uk/article/2683/Bishopton-Primary-School>



**Home-to-school transport – for pupils living in Dargavel who attend Bishopton Primary School (August, new Primary One, Primary Two & Primary Three pupils)**

*Collect your child in the morning and take them to school- bring them home after school (three collection places)*

This bus service is only for pupils.

**This is a weekly message via group call (correct email address and mobile number) from our school office. Complete a Microsoft Forms for pick-ups at home time. Make sure your child knows!**

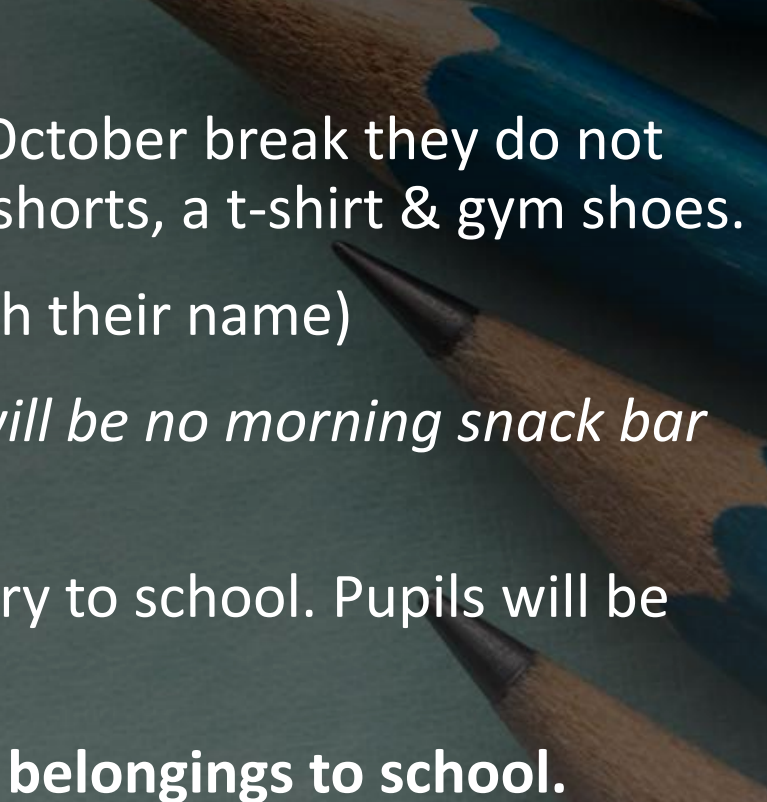
**Text message on 14<sup>th</sup> August - require to reply if their child will be using the bus over the course of the year. so they can be added to the email list. This will include Week 1!**

[HOME TO SCHOOL TRANSPORT - RENFREWSHIRE WEBSITE](#)



# What to Bring to School

---

- A school bag and/or a book bag
  - As they will not be changing for P.E. until after the October break they do not need any additional kit. After October break, bring shorts, a t-shirt & gym shoes.
  - A full refillable water bottle with them (labelled with their name)
  - A small snack for intervals. *Please note that there will be no morning snack bar provided by the catering team.*
  - There is no requirement for pupils to bring stationery to school. Pupils will be provided with all the resources that are required.
  - **Pupils should not bring any toys or other personal belongings to school.**
- 

## Key School Partners

Educational Psychologist- Brigitte Short

Family Wellbeing Team(Deborah Proctor)

SPACE team

Speech Therapist- Vahri MacPherson

Teacher of the Deaf- Angela Allen (Sensory  
Support Service)

Exchange Counselling

CAHMS

# How can I support my child's learning?

- As a parent, you are your child's primary educator - 80% of learning comes from home.
- Try not to use the teacher/school staff as a threat.
- Engage with family learning events *throughout* your child's schooling
- Show you value education.
- Complete set homework - check SEESAW daily.
- Ensure they get plenty of sleep!
- Healthy snacks
- Read to your child – and be seen to read yourself as a family.





# Making learning relevant...

Play, Talk Read

playtalkread

Read, Write Count



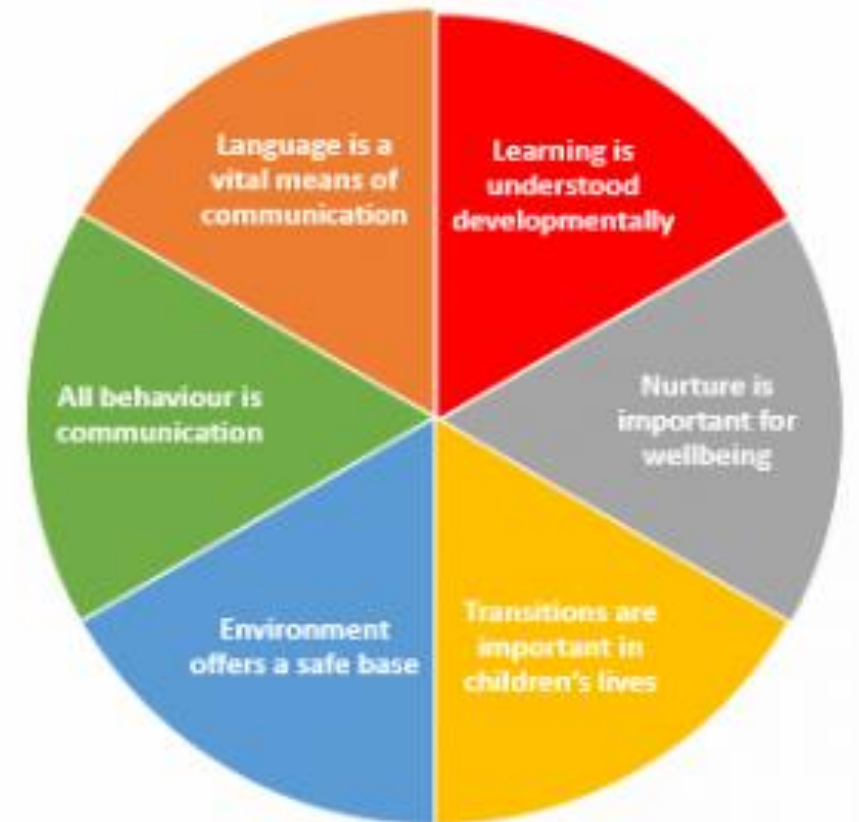
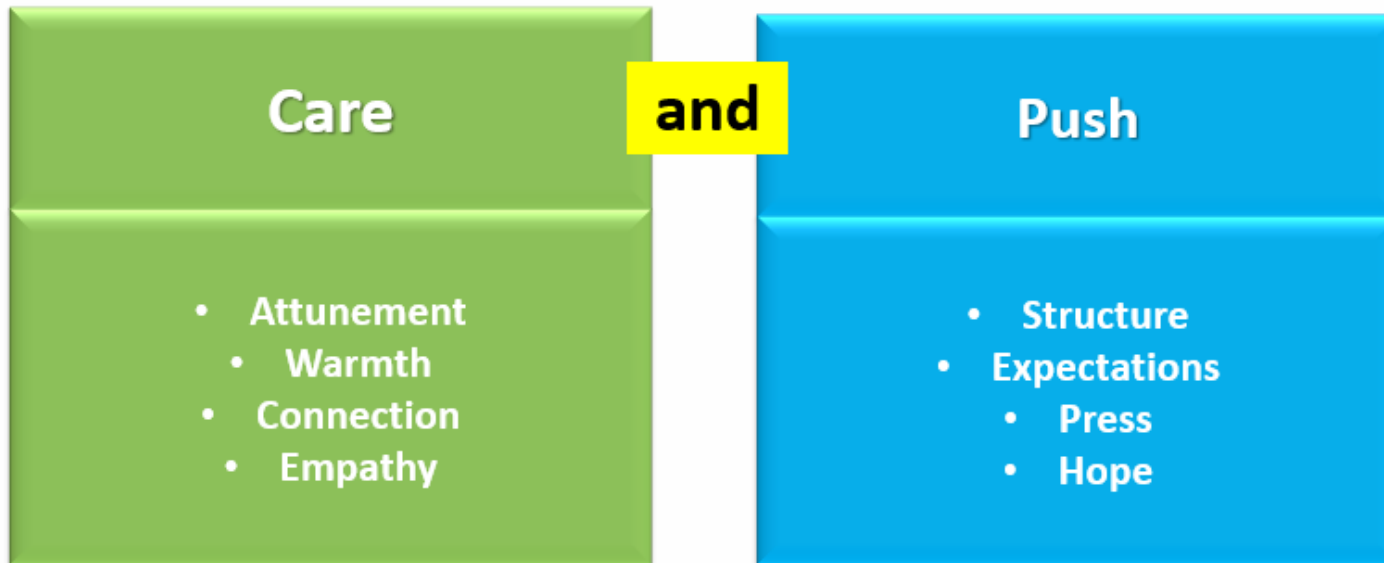
# GOLD Award Winning Renfrewshire Nurturing Relationships Approach



Whole-school nurturing & inclusive approach

Explored nurture principles & staff received training from education psychology

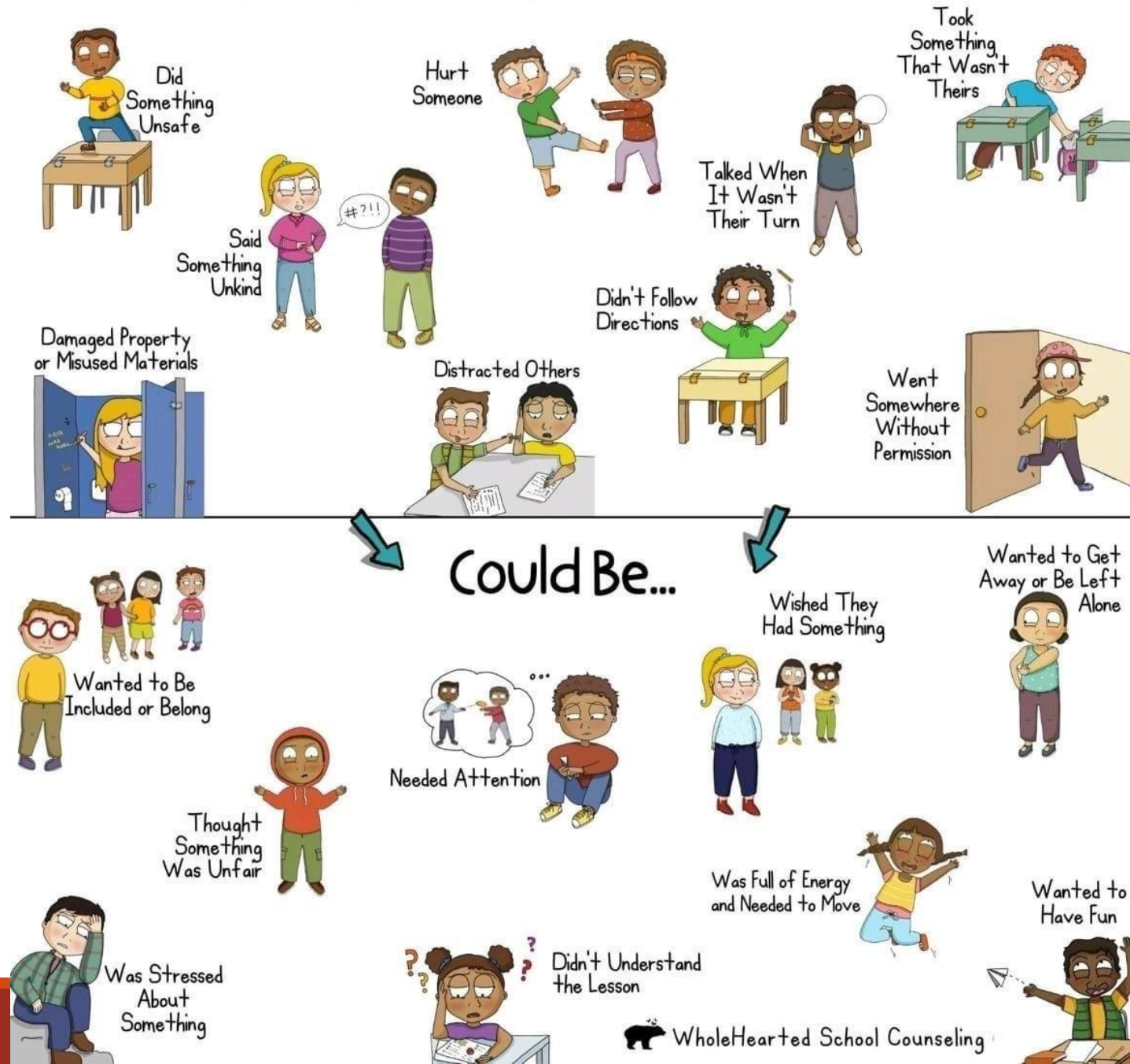
## Two Pillars of Nurture



**REN10 – Take a breath and count to 10.**

# What's Behind Behavior Like This At School...

## Identifying Hidden Needs



# Restorative Practice

**As adults who work with children, we should view ourselves as stress regulators and shame reducers instead of behaviour managers.**

Louise Bomber



## High 5

1. What happened?
2. What were you thinking about when it happened?
3. What have you thought about since it happened?
4. Who has been affected by what you have done? How?
5. What do you think you need to do to make things ok?



## Low 4

1. What did you think when it was happening?
2. How has this left you and others feeling?
3. What has been the hardest thing for you?
4. What do you think could make things right?

Primary 1  
Parent Information Evening

Date for your diary

Tuesday 25<sup>th</sup> August 2026 at 6.30 pm



