



Bargarran Primary School

Attendance Matters

Issue No 7 - May 2025



Welcome to the final 'Attendance Matters' newsletter of the session.

The aim of the newsletter is to support attendance at school through sharing our attendance information, explain the potential impact absence has on a child's school experience and explain our whole school attendance procedures.

Attendance Monitoring

The latest whole school attendance monitoring of all pupils took place on 20 May. The table below shows the percentage of children in each category.

	Attendance Rate	Above 90%	Between 80% and 90%	Below 80%
September	% of children	88.2	9.5	2.3
October	% of children	85.4	11.9	2.7
December	% of children	84.5	14.6	0.9
January	% of children	87.7	11.4	0.9
March	% of children	90.1	8.6	1.3
May	% of children	90.5	9.1	0.5

The information gained from our most recent attendance monitoring shows a continued welcome increase in attendance above 90%.

Attendance and Attainment

Children's attainment at school has an impact on the opportunities available to them in later life. Research shared by Educational Psychologists showed that when a child's attendance rate falls below 87% over a sustained period there is a high probability their attainment will be negatively impacted.

Attendance Data

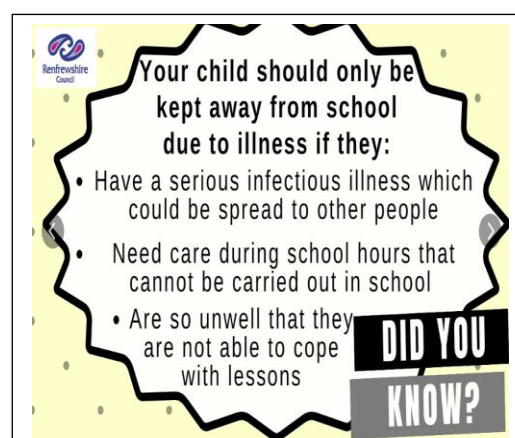
The average school attendance over the past three years for Bargarran Primary and primary schools across Renfrewshire Council is as follows:

School Year	Bargarran Primary	Renfrewshire Council
2021-22	93.2%	92.7%
2022-23	93.3%	92.5%
2023-24	94.4%	93.1%

Our school attendance data will not be available until after the last day of the session. We hope for a third successive increase and will share the data for this session with you at the start of next session.

School Attendance Procedures

Step 1	Please consider the two slides below.
Step 2	<p>On the first day of absence contact phone the school office on 0300 300 1447 to report the absence before 9.00 a.m. or e-mail bargarranenquiries@renfrewshire.gov.uk</p> <p>Please do not send a message on Class Dojo or through the school web site as it may not be picked up.</p>
Step 3	Please repeat Step 2 for every day of absence unless reason for attendance requires a period of isolation.



School Monitoring Procedures

If at any point you are concerned about your child's attendance at school or would like support with your child's attendance at school please contact the school office.

Attendance rates are monitored on a regular basis and the following procedures followed for attendance under 90%.

Step 1	Letter sent out informing Parent and Carer attendance is below 90% and offering support if required.
Step 2	If attendance remains below 90% a second letter will be sent out and the initial point of contact will be in touch to discuss attendance levels.
Step 3	If attendance remains below 90% a third letter will be sent out offering a meeting with HT to discuss attendance.

Should I send my child to school? How long should I keep my child off for?

These are two very difficult questions faced by parents with an unwell child. The table below is taken from guidance provided to schools by the Public Health Agency and can be used as a guide if you are unsure if you should send your child to school.

We do understand that to have an unwell child can cause difficulties with work and other commitments. We would ask you to follow the advice below and in the interests of the health of our school community please do not return your child to school until the stated period of time has passed.

Condition	Advice
Diarrhoea and/or Vomiting	48 hours from last episode of diarrhoea or vomiting
Chicken Pox	Until all vesicles have crusted over
Whooping Cough	48 hours from commencing antibiotic treatment, or 21 days from onset of illness if no antibiotic treatment
Mumps	Five days after onset of swelling
Slapped Cheek	Child can return after rash has developed
Measles	Four days from onset of rash
Scarlet Fever	Child can return 24 hours after commencing appropriate antibiotic treatment
Hand, foot and mouth	None
German measles	Four days from onset of rash
Scabies	Child can return after first treatment
Flu	Once fully recovered
Tuberculosis	Always contact your doctor
Threadworms	None, but treatment recommended for child and household contacts