



Bargarran Primary School
Attendance Matters
Issue No 4 - December 2024



Welcome to the latest update on this session's attendance at Bargarran Primary.

The aim of the update is to support attendance at school through sharing our attendance information, explain the potential impact absence has on a child's school experience and explain our whole school attendance procedures.

Attendance Monitoring

The latest whole school attendance monitoring of all pupils took place at the beginning of December. The table below shows the percentage of children in each category.

	Attendance Rate	Above 90%	Between 80% and 90%	Below 80%
September	% of children	88.2	9.5	2.3
October	% of children	85.4	11.9	2.7
December	% of children	84.5	14.6	0.9

The information gained from our recent attendance monitoring shows a small, but concerning, continued fall in attendance across the whole school.

The number of children with attendance over 90% fell for the second straight monitoring period.

Children with attendance in the first cause for concern category of between 80% and 90% increased for the second straight period also.

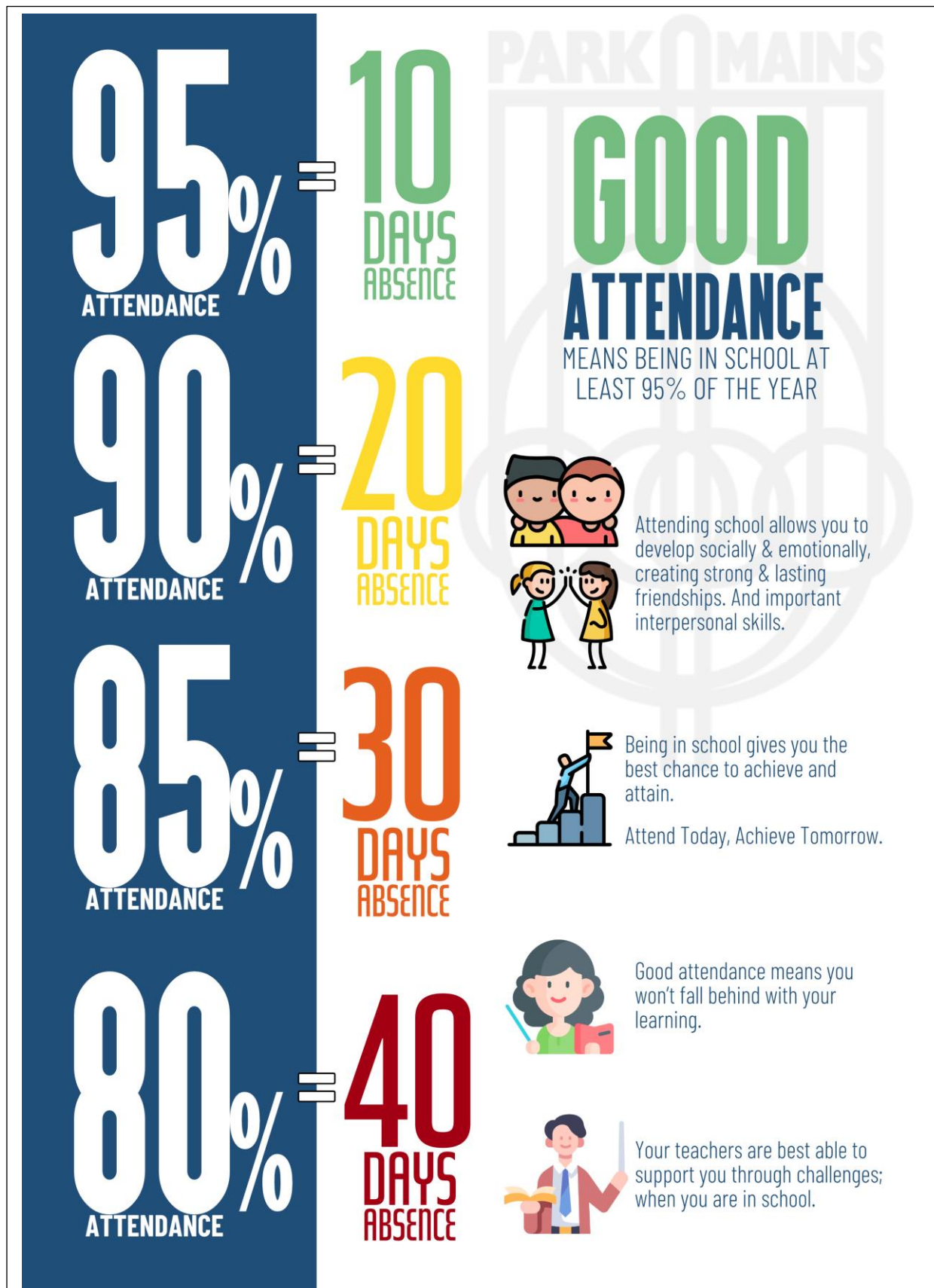
One positive piece of information is the fall in numbers of children in our main cause for concern category of below 80%.

The next scheduled attendance monitoring will take place during January and we will update you with the whole school attendance figures in our next attendance newsletter.

A Cluster Approach

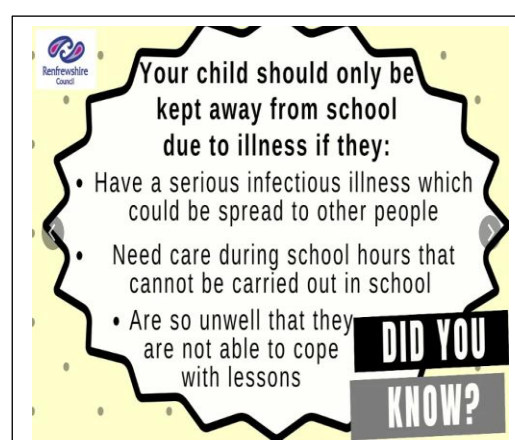
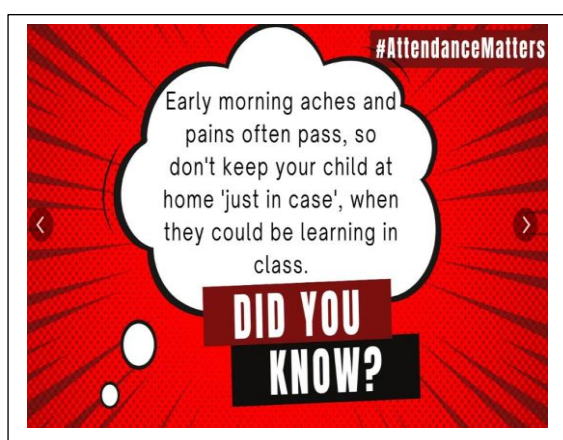
Park Mains High School and all seven feeder primary schools are working together with the aim of improving attendance and bringing it back to pre-covid 19 levels.

The cluster poster below shows the impact absence can have.



School Attendance Procedures

Step 1	Please consider the two slides below.
Step 2	<p>On the first day of absence contact phone the school office on 0300 300 1447 to report the absence before 9.00 a.m. or e-mail bargarranenquiries@renfrewshire.gov.uk</p> <p>Please do not send a message on Class Dojo or through the school web site as it may not be picked up.</p>
Step 3	Please repeat Step 2 for every day of absence unless reason for attendance requires a period of isolation.



School Monitoring Procedures

If at any point you are concerned about your child's attendance at school or would like support with your child's attendance at school please contact the school office.

Attendance rates are monitored on a regular basis and the following procedures followed for attendance under 90%.

Step 1	Letter sent out informing Parent and Carer attendance is below 90% and offering support if required.
Step 2	If attendance remains below 90% a second letter will be sent out and the initial point of contact will be in touch to discuss attendance levels.
Step 3	If attendance remains below 90% a third letter will be sent out offering a meeting with HT to discuss attendance.

Attendance Phone Calls

If you receive a phone call from school staff regarding your child's attendance rate please be aware that our only motive for doing so is to support your child and yourself by helping in any way we can. Our school approach is based on working together we can improve attendance at school.

Our Whole School Attendance Goal for 2025

This year we are aiming to increase our average school attendance for the third consecutive year and have set an ambitious target average attendance of **95%**.

Our attendance rate prior to the Covid -19 pandemic was 96.2% Over the past three sessions our attendance rate has been steadily increasing as shown in the table below.

Bargarran Primary School Attendance Rates	
School Year	Bargarran Primary Attendance Rate
2021-22	93.2%
2022-23	93.3%
2023-24	94.4%

Please support the school in helping us make it to **95** in the year **2025**.

And Finally.....

Thank you for reading our update and on behalf of all at Bargarran Primary School we would like to wish all our children, parents, carers and families a.....



