



Bargarran Primary School
Attendance Matters
Issue No 2 - October 2024



Welcome to the second update this session on school attendance at Bargarran Primary.

The aim of the update is to share our school attendance information and to explain our attendance support procedures.

Attendance Monitoring

The first attendance monitoring of all pupils took place at the end of September. The table below shows the percentage of children in each category.

Attendance Rate	Above 90%	Below 90%	Below 80%
% of children	88.2	11.8	2.3

The next scheduled attendance monitoring will take place at the end of October and we will update you on our attendance figures in our next attendance newsletter.

Last school session our average attendance increased for the second consecutive year. Our attendance also continues to increase at a higher rate than schools across Renfrewshire. This year we are aiming to increase our average school attendance for the third consecutive year and have set a target average attendance of **95%**.

Please help us to succeed and make sure every day counts.



School Monitoring Procedures

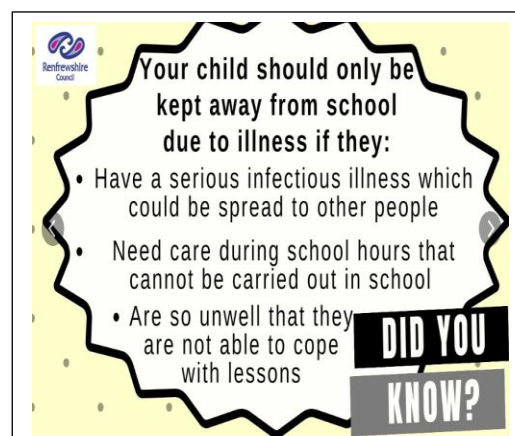
If at any point you are concerned about your child's attendance at school or would like support with your child's attendance at school please contact the school office.

Attendance rates are monitored on a regular basis and the following procedures followed for attendance under 90%.

Step 1	Letter sent out informing Parent and Carer attendance is below 90% and offering support if required.
Step 2	If attendance remains below 90% a second letter will be sent out and the initial point of contact will be in touch to discuss attendance levels.
Step 3	If attendance remains below 90% a third letter will be sent out offering a meeting with HT to discuss attendance.

School Attendance Procedures

Step 1	Please consider the two slides below.
Step 2	On the first day of absence contact phone the school office on 0300 300 1447 to report the absence before 9.00 a.m. or e-mail bargarranenquiries@renfrewshire.gov.uk Please do not send a message on Class Dojo or through the school web site.
Step 3	Repeat Step 2 for every day of absence unless reason for attendance requires a period of isolation.



Should I send my child to school? How long should I keep my child off for?

These are two very difficult questions faced by parents with an unwell child. The table below is taken from guidance provided to schools by the Public Health Agency and can be used as a guide if you are unsure if you should send your child to school.

Condition	Advice
Diarrhoea and/or Vomiting	48 hours from last episode of diarrhoea or vomiting
Chicken Pox	Until all vesicles have crusted over
Whooping Cough	48 hours from commencing antibiotic treatment, or 21 days from onset of illness if no antibiotic treatment
Mumps	Five days after onset of swelling
Slapped Cheek	Child can return after rash has developed
Measles	Four days from onset of rash
Scarlet Fever	Child can return 24 hours after commencing appropriate antibiotic treatment
Hand, foot and mouth	None
German measles	Four days from onset of rash
Scabies	Child can return after first treatment
Flu	Once fully recovered
Tuberculosis	Always contact your doctor
Threadworms	None, but treatment recommended for child and household contacts

A Cluster Approach

All schools in the Park Mains cluster are working together with the aim of improving attendance at school. The poster below shows how the attendance percentages relate to the number of school days off each year. Children with an attendance of 85% across their seven years in primary school will miss the equivalent of over one school year during their time at primary school.

