



Bargarran Primary School

Attendance Matters

September 2024



Welcome to the first termly update on school attendance at Bargarran Primary. The aim of the update is to share attendance information about our school and to explain our attendance support procedures.

We feel a high rate of attendance at school is vital for our children as it supports health and wellbeing as well as learning.

Attendance Data

The average school attendance over the past three years for Bargarran Primary and primary schools across Renfrewshire Council is as follows:

School Year	Bargarran Primary	Renfrewshire Council
2021-22	93.2%	92.7%
2022-23	93.3%	92.5%
2023-24	94.4%	93.1%

Last school session our average attendance increased for the second consecutive year. Our attendance also continues to increase at a higher rate than schools across Renfrewshire. This year we are aiming to increase our average school attendance for the third consecutive year and have set a target average attendance of **95%**.

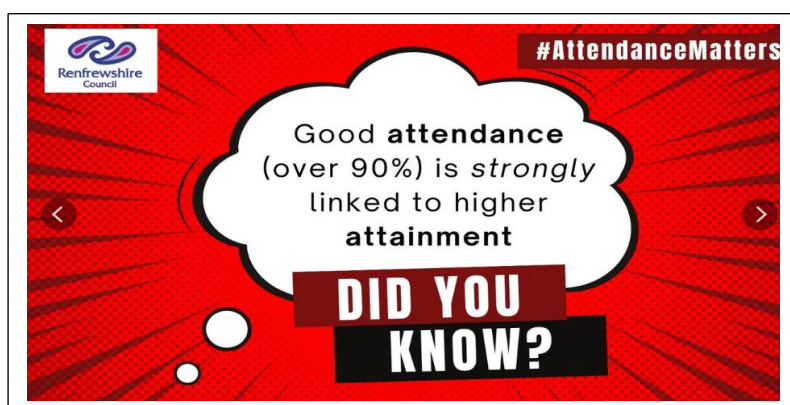
Please help us to succeed and make sure every day counts.



Did You Know?



This would mean a child with attendance rate of **85%** would miss the equivalent of **over one full school year** over their seven years at primary school!

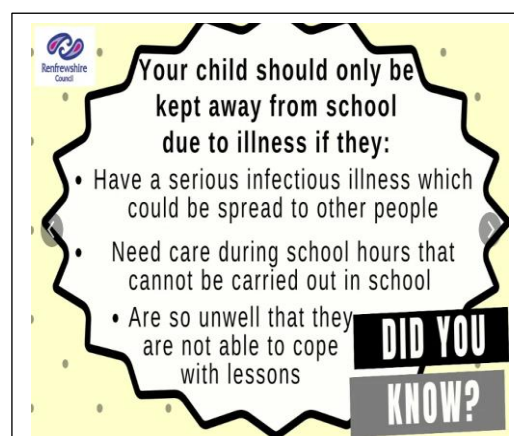
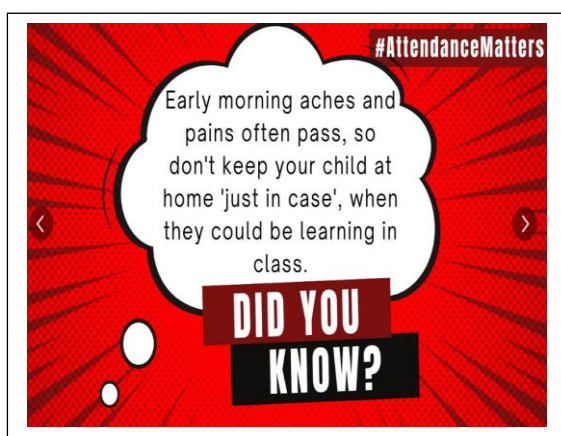


Last session our attendance figures for each stage were as follows:

Stage	Children with attendance over 90%	Children with attendance under 90%
P.1	89%	11%
P.2	76%	24%
P.3	83%	17%
P.4	90%	10%
P.5	87%	13%
P.6	79%	21%
P.7	90%	10%

School Attendance Procedures

Step 1	Please consider the two slides below.
Step 2	On the first day of absence contact phone the school office on 0300 300 1447 to report the absence before 9.00 a.m. or e-mail bargarranenquiries@renfrewshire.gov.uk Please do not send a message on Class Dojo or through the school web site.
Step 3	Repeat Step 2 for every day of absence unless reason for attendance requires a period of isolation.



School Monitoring Procedures

If at any point you are concerned about your child's attendance at school or would like support with your child's attendance at school please contact the school office.

This session we are using our PEF funding to have an initial point of contact out with the school management team.

Miss MacVicar is the initial point of contact and can be contacted through the school office.

Attendance rates are monitored on a regular basis and the following procedures followed for attendance under 90%.

Step 1	Letter sent out informing Parent and Carer attendance is below 90% and offering support if required.
Step 2	If attendance remains below 90% a second letter will be sent out and the initial point of contact will be in touch to discuss attendance levels.
Step 3	If attendance remains below 90% a third letter will be sent out offering a meeting with HT to discuss attendance.

We hope you have found the above information helpful. Further updates on our attendance data and procedures will be provided during the course of the session.