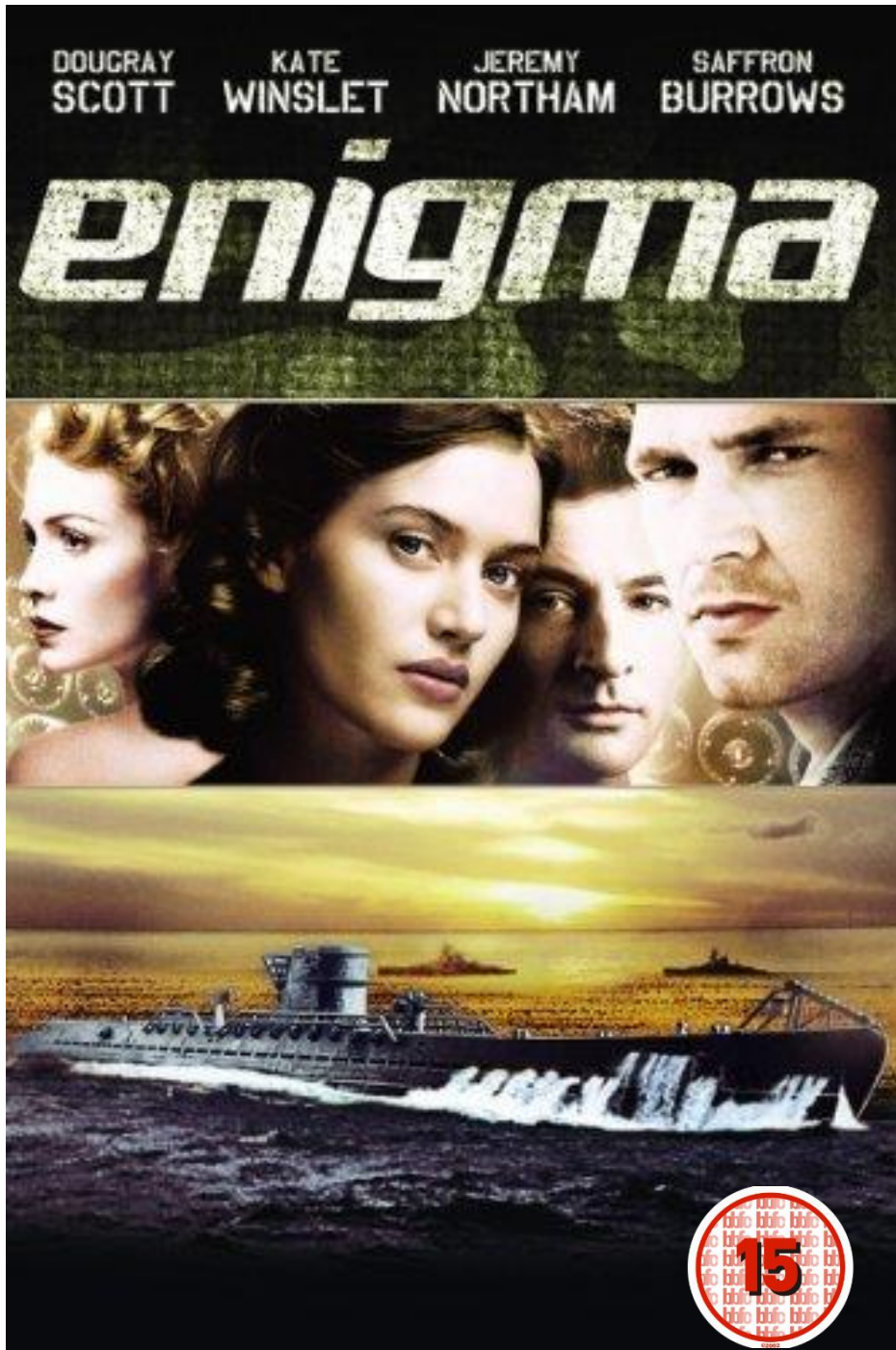


# AN EVENING OF FILM



**Wednesday,  
24 February,  
7.00pm**

Tickets are £3.50 and are available in advance from Strathearn Community Campus Reception.

Strathearn Community Campus,  
Pittenzie Road, Crieff.  
strathearnreception@pkc.gov.uk  
01764 657700

Or

For more details contact  
strathearnlibrary@pkc.gov.uk  
01764 657705

This film is shown as part of the Strathearn Festival of Science.



It is 1943 and at Bletchley Park a young mathematician frantically races against time to crack the German Enigma code while trying to solve the mystery surrounding the disappearance of the woman he loves. This event will be hosted by Strathearn Community Library.

[www.pkc.gov.uk/library](http://www.pkc.gov.uk/library)

**Strathearn  
Community  
Campus**

Follow us on:

 @LibraryPKC

 Perth & Kinross Libraries and Information Service