



Papay School Seaweed Survey

Kelp Store Area – 21st September 2021



Where?

Kelp Store Area, close to Old Pier – Papa Westray



When?

21st September 2021

11:48



12:24



13:30



14:17



What did we find?

How many in total? 33

Some of the types we found are shown on the following pages

Red	3
Green	7
Brown	23



Green Seaweeds



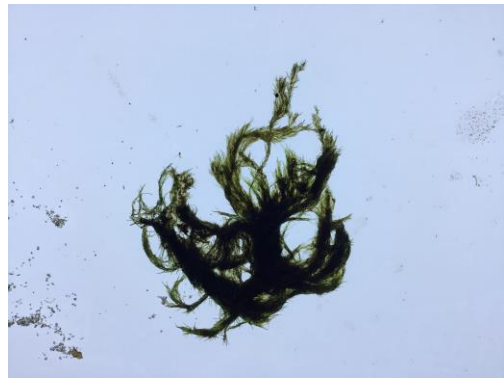
Gutweed



Gutweed



Sea Lettuce



Hairweed? Breadcrumb Sponge?



Spiral Wrack

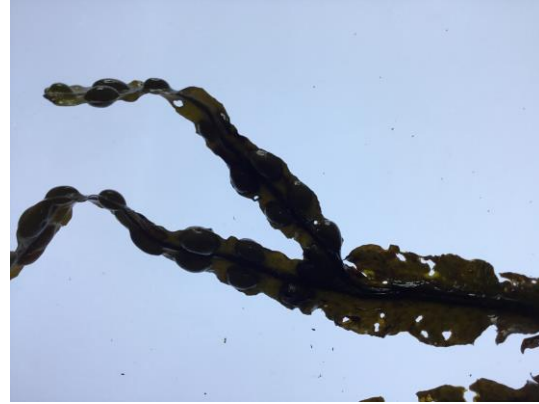


Velvet Horn

Brown Seaweeds



Sea Oak



Bladder Wrack



Thongweed



Serrated wrack



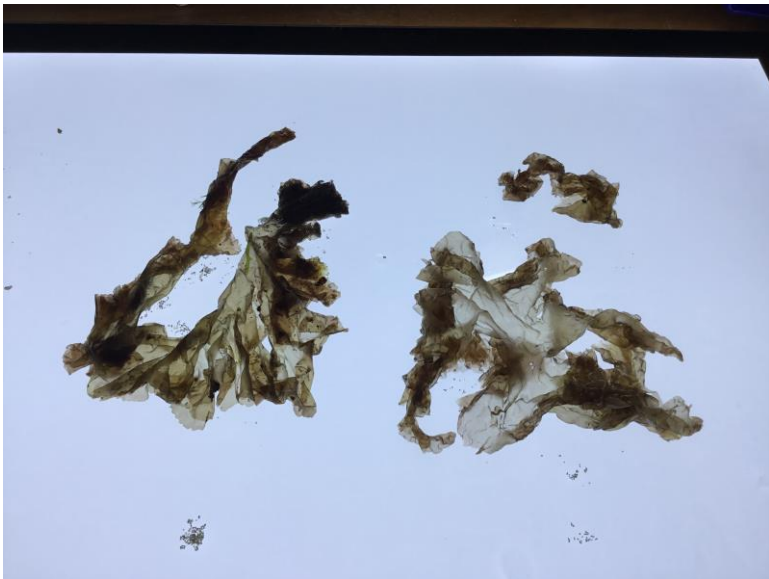
Furbellows

Red Seaweeds



We wonder if this is dried up slake?

Just up the beach you could find plenty of pinks and purples but in our zone there were none.



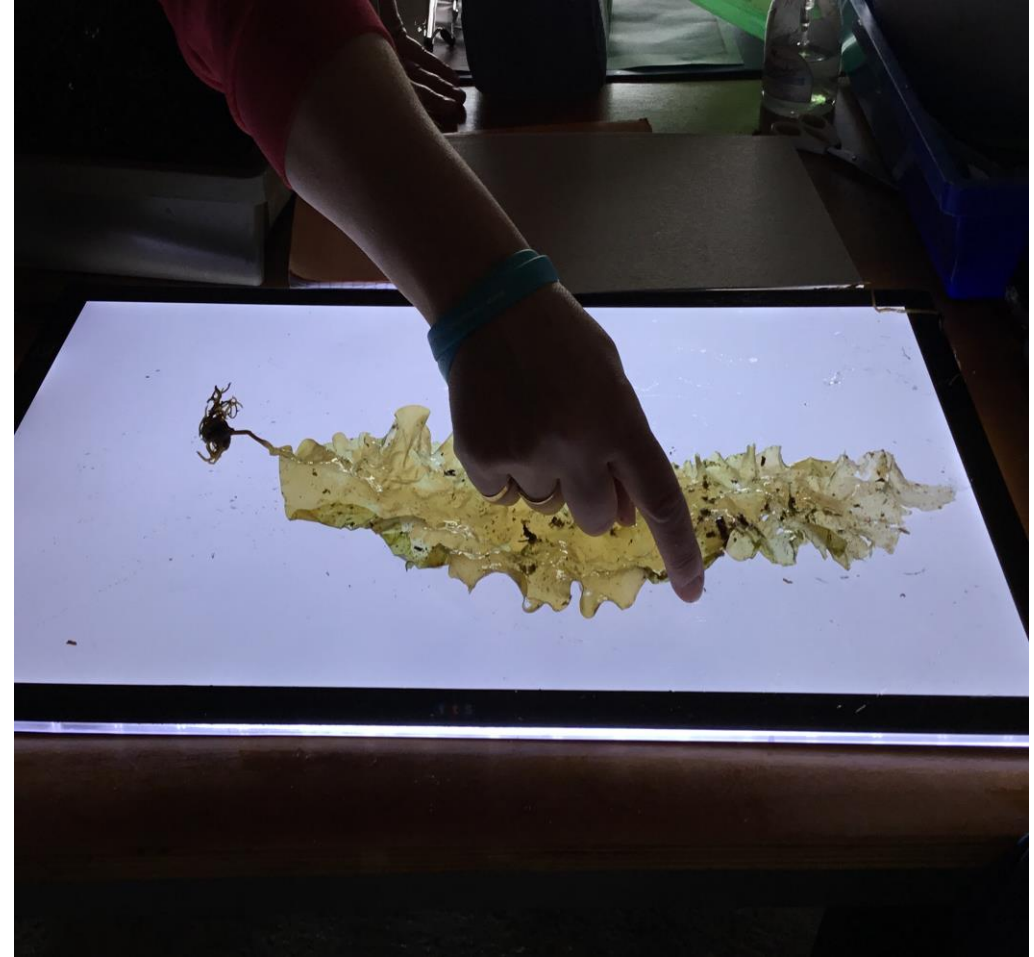
What did we do with each sample?

These are a few photos of us collecting them. We found our biggest one and it was called Furbellow. I was getting sea weed in the water and on the rocks.



What did we do with each sample?

This is us Photographing seaweed on the light box. This seaweed looked like the sun. We put every seaweed sample on the light box and had to fold it if it was too big. We had to untangle the arms for the photos.



What did we do with each sample?

In this picture we show how we put the seaweed in water to clean it and to mount it on to the paper.



What did we do with each sample?

The final stage was also the hardest. Identifying them all proved a real challenge. We looked in books for the names and wrote the ones we found on the paper.



What did we do with each sample?

We plan to share our results with:

- Local fishermen
- Orkney International Science Festival – Seaweed Survey
- The people who live on Papay by leaving a copy of this presentation in the Kelp Store.
- Our friends at other schools
- Please get in touch if you'd like more information. You can find contact details on the school website.