



Please use the QR code below to sign up to our School App.



School Newsletter

Newsletter 2 – January 2025

Happy New Year! We hope you all had a lovely Christmas and New Year break and enjoyed some quality time with family and friends.

We have another busy term ahead with nursery and Primary 1 enrolments and Parent's Night amongst other things.

Keep up to date with what's happening on our Twitter (X) page @whiteleesPS.



| | |
|-------------------------------|---|
| 13th January | P1 Enrolment 9.30am - 10.30am or 2.00pm - 3.00pm |
| 15th January | P1 Enrolment 9.30am - 10.30am or 2.00pm - 3.00pm |
| 16th January | P1 Enrolment 3.00pm - 4.00pm |
| 13th February | Parent Council Disco |
| 14th February | Latest and Best jotters to parents |
| 17th February | School Holiday |
| 18th February | School Holiday |
| 19th February | Inset Day (children should not attend) |
| 6th March | Parent's Evening |
| 7th March | World Book Day celebrations |
| W/C 24th March | P ower O ff and L earn O utdoors days (dates to be confirmed) |
| 4th April | School closes at 2.30pm for the Easter break |
| 7th April - 21st April | Easter Break |
| 5th May | May Day Holiday |
| 6th May | Inset Day (children should not attend) |
| 15th May | Parent Council Meeting |
| 23rd - 26th May | May Weekend Holiday |



parentsportal.scot

Thank you to all our parents who have already signed up to Parent's Portal. If you haven't already signed up please consider doing so. This is a one stop shop where you can report an absence, top up your child's dinner card, update contact details and sign permission slips amongst other things. This will also be where your child's report card will be published when the time comes, paper copies will no longer be sent home and copies will no longer be emailed.

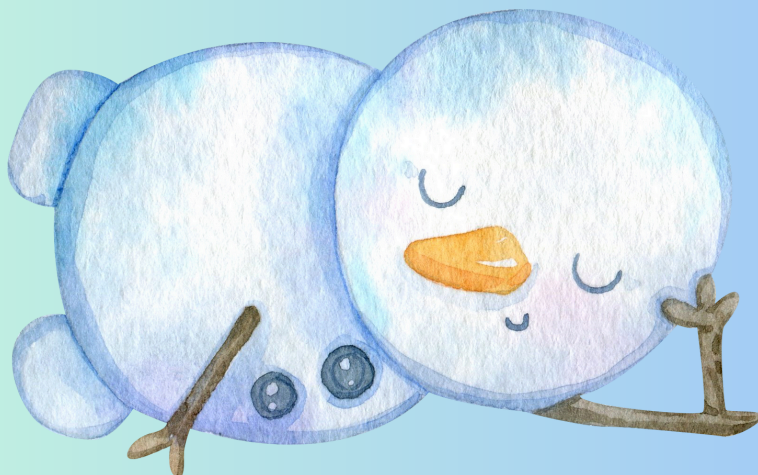
You can sign up through your MyGovScot account. If you don't already have one you can register online. If you require more information please drop us an email at enquiries-at-whitelees@northlan.org.uk

SWAP SHOP

Our Swap Shop is still open and we hope you will continue to make full use of this. We have items of school uniform, shoes, jackets, blazers and toys available. Please call our school office if you would like to arrange an appointment to visit the Swap Shop.



Our Parent's Night will take place on Thursday 6th March from 3.30pm - 8.30pm. Appointment can be booked online only. Please look out for an email coming to your inbox soon informing you that online bookeng has opened.





Primary 1 Enrolment

Enrolment for children who attain the ages of 5 years between 1 March 2025 and 29 February 2026 should be registered for education during week commencing Monday 13th January 2025. Please come along to Whitelees Primary School on one of the following dates and times to enrol your child:

Monday 13th January
9:30am - 10:30am or
2:00pm - 3:00pm

Wednesday 15th January
9:30am - 10:30am or
2:00pm - 3:00pm

Thursday 16th January
3:00pm - 4:00pm

Children living in the following streets **MUST** register at Whitelees Primary School

Almond Road
Birkenburn Court/Place/Road
Cherry Avenue
Lilac Avenue/Court/Hill/Place
Redburn Court/Place/Road

Arns Road
Braesburn Court/Place/Road
Chestnut Avenue/Court/Place
Maple Court/Road
Roseburn Place

Ash Road
Castburn Road
Hornbeam Road
Pine Court/Crescent/Grove
Whitelees Road

If you wish to send your child to a school out with our catchment area you must still register them at Whitelees Primary School and complete a placing request.

Birth certificate and council tax bill **MUST** be produced when you enrol.

APPLY NOW



Enrolment for nursery session 2025-2026 is now open. All children who will be 3 years of age before the 1 March 2026 are entitled to receive up to 1140 hours statutory funded place during session 2025-2026.

The Government funding start dates are where a child's third birthday fall on or between:

1 March 2025 and 31 August 2025 they will be eligible for funding from August 2025 (autumn term) occurring in that year.

1 September and 31 December 2025 they will be eligible for funding from January 2026 (spring term) following their birthday.

1 January and last day of February 2026 they will be eligible for funding from April 2026 (summer term) following their birthday.

Parents or carers of a child whose funded place will start at any of these times should apply now. You can apply online using the following link:

https://www.northlanarkshire.gov.uk/sites/default/files/2024-12/ELC%20Application%20form%203-5yr%202025-2026_1.pdf

The completed application form and supporting paperwork should be emailed to your first choice provider. If we are your first choice provider please send applications to enquiries-at-whitelees@northlan.org.uk. Please note to ensure a nursery place three choices MUST be provided on the application. Supporting paperwork can be sent as a photo attachment. You can use the link below to obtain a copy of your current council tax bill.

<https://www.northlanarkshire.gov.uk/council-tax/view-and-manage-your-council-tax-account-online>

If your child is on our waiting list for this session a new application would be required for August 2025.

REMINDER

Please ensure your child brings their water bottle to school each day. These can be replenished at our water fountains. Increasingly children are coming to school without water bottles and unfortunately, we are unable to continue to supply disposable cups. If you are unable to provide a water bottle for your child please contact the school office who will be happy to arrange one for them.



Please remember to top up your child's dinner card online using Ipayimpact to ensure they have sufficient funds to pay for their lunch and breakfast (if they attend Breakfast Club). The cost of a school lunch is £3.25.



If you haven't already completed all of our online forms for Medical and Dental Consent and ICT Acceptable Use for your child please do so using the links below:

<https://forms.office.com/e/hv5rdxwm7c>

<https://forms.office.com/e/ajsOYWMVGK>

If you haven't already returned your child's Annual Data Check and EV5 form distributed in August could you please make arrangements to return these? The Annual data Check will ensure we have the most up to date contact details for your child and the EV5 form will ensure we have permission to take your child on trips out with the school building. If you require these to be re-issued please contact our school office who will be happy to help.



Please do not use the staff car park to pick up/drop off your child at any time. This is for the safety of all our children, parents and staff. If you have no option but to use the car park please do not block our bin area as North Lanarkshire Council require access to these at all times. Increasingly we have parents/visitors with blue badges. We respectfully ask that the disabled spaces are kept free for these visitors/parents. If you are using the disabled space please display your blue badge.



Please be reminded that we are a **nut free** school. We have several children with severe nut allergies who could suffer a life threatening reaction if exposed to nuts.

Drop off and Pick Up

Please be mindful when dropping off and picking up your child/ren from school. We have been contacted by Whitelees residents and local Councillors who are concerned about the parking outside the school. Please ensure you are parked safely.

PLEASE SEE BELOW INFORMATION FROM NORTH LANARKSHIRE COUNCIL

We all want to keep our children safe, but recent reports of "near misses" at some schools show how important it is to stay alert during drop-off and pick-up times.

Please take a moment to read these important safety reminders:

Stick to the rules:

Keep to the speed limit and watch for pedestrians.
Use only designated parking spaces and avoid "no parking" zones.

Be alert:

Avoid distractions like using your phone while driving or walking near the school.
Keep an eye out for children who may cross the road unexpectedly.

Set an example:

Teach your children to use crossings and wait for an adult before stepping onto the road.
Follow the school's guidance for drop-off and pick-up areas.

Be seen:

Children often wear dark-coloured coats, which makes it difficult for drivers to see them on misty, rainy mornings or after school when the daylight is fading

We'd encourage everyone, whether walking or cycling, to consider using fluorescent and reflective clothing.

There are also simple ideas to consider, like adding a bright scarf, gloves or hat if wearing a dark winter coat, a reflective badge or a snap band or using a bright school bag.

We all have our part in preventing accidents and ensuring everyone stays safe during winter.