



Taylor High School

Que tout soit pour Dieu

Carfin St
Motherwell
North Lanarkshire
ML1 4JP

School Newsletter

 01698 274976

18 February 2022

Dear Parent/Carer/Student,



It was good to welcome all our young people back after the mid-term weekend. With a blustery couple of days, I took the opportunity to remind all of our young people of the arrangements we have in place for extreme weather. For the majority of the time, our young people will be outdoors more often, and it is important that they are coming to school with appropriate clothing to ensure their warmth and comfort. On the occasion that the weather is extreme, or for pupils eating their lunch from the canteen/packed lunch, there are designated zones for each yeargroup. I continue to ask young people to be as safe as they can be by following our guidelines related to wearing masks, sanitising and avoiding crowds or close contact in line with local and national advice. Please review the latest parent/carers information, including the low-risk contact letter, on our website [here](#).



Our first 'Have Your Say' fortnight starts next week with a focus on asking parents/carers on their views of the school's approaches to communication. Effective engagement with parents and carers is a priority for us and we know it is important to you as well. Over the next 2 weeks, we would like to capture your feedback about how well we communicate with parents and carers. We will do this through an online survey, and also through an online video discussion group. The information gained from the survey, together with focus group discussions, will shape how both the school and the parent council communicate with our school community.

ONLINE SURVEY : [Please click here to take a few minutes to share your thoughts and give us your feedback, as we're always looking to improve.](#)

[CLICK HERE TO REGISTER TO TAKE PART IN A DISCUSSION GROUP ON MONDAY 28TH FEBRUARY 7-8PM](#)



Please see the next page for an updated list of PE clubs and activities that are on offer at Taylor High School.

If you have any queries or concerns, please contact your Principal Teacher of Pupil Support, or if you have a general enquiry you can use our general enquiry mailbox: enquiries-at-taylor@northlan.org.uk.

Yours faithfully,
Paul McWatt

 <https://blogs.glowscotland.org.uk/nl/taylor/>

[@TaylorHS1982](https://twitter.com/TaylorHS1982)



EMAIL: enquiries-at-taylor@northlan.org.uk

Monday



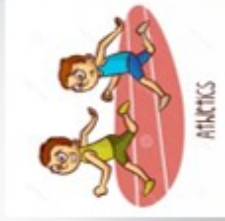
Basketball
Games Hall
S1 - S6
3.45 - 4.45

Tuesday



Indoor Football
Games Hall
S1
12.45 - 13.15

Tuesday



Athletics
Games Hall/Outdoor
S1 - S6
3.45 - 4.45

Wednesday



Badminton
Games Hall
S1 - S2
12.45 - 13.15

Thursday



Dodgeball
Middle Gym
S1 - S2
12.15 - 13.45

Thursday



Basketball
Games Hall
S1 - S3
12.45 - 13.15

PE Extra – Curricular Activities



Do you need more information?

If so, then ask any member of the PE Staff or Mr Russell