

Red Planet – Band 7 (Turquoise) ORT

L.I –I am learning to identify speech from a text.

S.C – I have... *read the book *skimmed and scanned each page *written what was said
*told who said it *used core targets

A green-outlined speech bubble with three horizontal dotted lines inside, intended for student writing.

A green-outlined speech bubble with three horizontal dotted lines inside, intended for student writing.

A green-outlined speech bubble with three horizontal dotted lines inside, intended for student writing.

A green-outlined speech bubble with three horizontal dotted lines inside, intended for student writing.

Red Planet – Band 7 (Turquoise) ORT

L.I – I am able to show understanding of a text

S.C – I have... *read the story *read each question *skimmed and scanned for information
*answered in sentences *used core targets

1. What did Wilf and Chip make?

Wilf

2. Where did the rocket ship take the children?

The

3. What did the children use to explore the planet?

The.....

4. How do you think the children felt when they were falling down the hole?

I thinkbecause.....

.....

5. How did the children get out of the cave?

.....

6. Why was Nadim glad he didn't have to land the rocket again?

I think.....

Red Planet – Band 7 (Turquoise) ORT

L.I – I am able to summarise a story by creating a B.M.E

S.C – I have... *used my own words *included main events
*sequenced it correctly *included core targets

B.....
.....
.....
.....
.....
.....
.....

M.....
.....
.....
.....
.....
.....
.....
.....
.....
.....

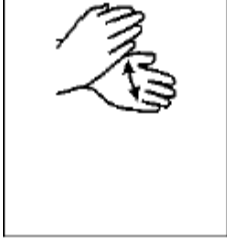
E.....
.....
.....
.....
.....
.....

Red Planet – Band 7 (Turquoise) ORT

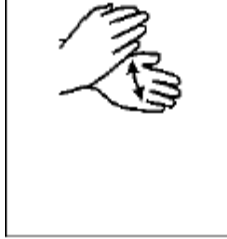
L.I – I am able to identify syllables within words

S.C – I have... *read each word *clapped each word
*written how many syllables are in each word

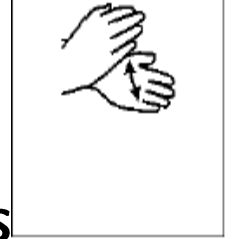
to



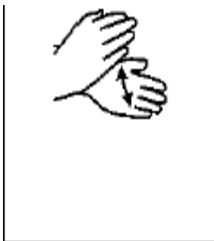
quite



pieces



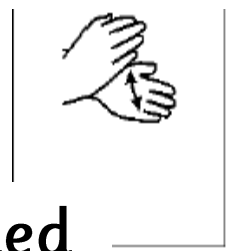
came



rocket



pretended



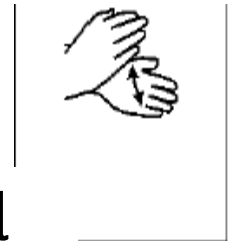
away



going



wanted



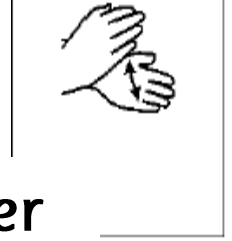
inside



crashed



computer



Red Planet – Band 7 (Turquoise) ORT

L.I – I am able to create an Author’s Plan using information from the text

S.C – I have... *read the book *told who was in the story *told when the story took place
*told where the story took place *told what happened *told how it ends *used core targets

Who?.....

When?.....

Where?.....

What?.....

.....

.....

.....

.....

.....

.....

.....

.....

How did it end?.....

.....

.....

.....

.....

