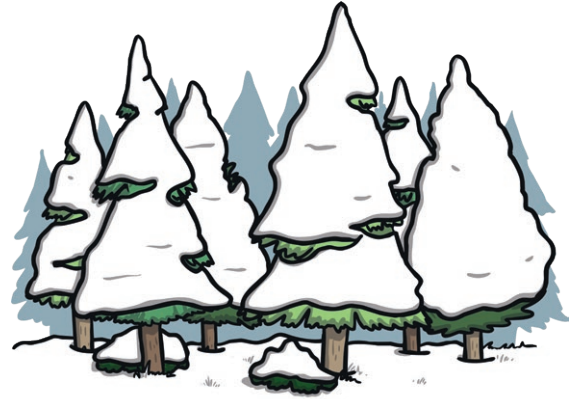


All about Winter

Winter is one of the four seasons; it is the season that comes after autumn. Winter begins in December and finishes in February. Winter is often the season where we have the coldest weather. We sometimes experience sleet, hail and snow.

What happens to the animals?

Animals cannot cope with the cold like we do by putting the heating on or wearing a jumper! Many animals hibernate during the autumn and winter e.g. bears, bees, hedgehogs, frogs, snakes and some types of bats.



Some animals migrate to somewhere warmer for the winter, like geese. Other animals store food for the winter so they have enough to eat when there is less food around. Badgers, skunks and squirrels do this.

There are also some animals who adapt when it is cold; they do this by changing the way they look. A mountain hare turns white during the winter to camouflage themselves in the snow.

What happens to our health in winter?

During the winter, it is common for people to suffer from colds and the flu. Symptoms that some people suffer from can include a runny nose, cough and headache.

Which celebrations happen in winter?

Christmas is an exciting time of celebration during winter. Christmas Day is on the 25th December and is a religious and cultural event, celebrated today by Christians and many other people around the world.

New Year's Day is always on January the 1st and many people celebrate this time of year with friends and family. Many people also join in with the Chinese New Year festival. This celebration takes place in either January or February every year.

Questions

1. Name two types of weather we can experience in winter.

2. When does winter begin and end?

3. Which season does winter come after?

4. Name an animal that changes colour in winter and the colour it turns.

5. What do some animals do so that they have enough to eat when there is less food?

6. What can happen to our health in winter?

7. Who celebrates Christmas today?

8. What do many people do at New Year?

9. Which festival takes place in either January or February every year?

Answers

1. Name two types of weather we can experience in winter.
We sometimes experience sleet, hail and snow. (Accept any 2.)
2. When does winter begin and end?
Winter begins in December and ends in February.
3. Which season does winter come after?
Winter comes after autumn.
4. Name an animal that changes colour in winter and the colour it turns.
Mountain hares turn white during the winter.
5. What do some animals do so that they have enough to eat when there is less food?
Some animals store food for the winter, so they have enough to eat
6. What can happen to our health in winter?
It is common for people to suffer from colds and the flu.
7. Who celebrates Christmas today?
Christmas is celebrated today by Christians and many other people around the world.
8. What do many people do at New Year?
Christmas was originally celebrated by Christians.
9. Which festival takes place in either January or February every year?
Chinese New Year festival takes place in either January or February every year.