

# Correct the Sentences

Copy each sentence onto the line below, correcting and adding the missing punctuation.

Top Tip!

Don't forget the apostrophes in contractions (e.g. can't) or the possessive apostrophe (e.g. the girl's book).

**C** is for **Command** – These are orders that tell us to do something. They can end in a full stop or an exclamation mark.

come here right now

---

stand still

---

**E** is for **Exclamation** – These sentences express excitement or emotion and start with 'what' or 'how'. They usually end in an exclamation mark.

how strange

---

what a lot of people

---

**Q** is for **Question** – These sentences ask questions and end with a question mark.

where shall we go for lunch

---

who is going to share their cake with me

---

**S** is for **Statement** – These sentences tell us facts and usually end with a full stop.

the first month of the year is january

---

sam is coming to my party on saturday

---

# Correct the Sentences

Read each sentence and tick the correct sentence type. Then, copy the sentence onto the line below, correcting and adding the missing punctuation. The first one has been done for you.

**C** is for **Command** – These sentences tell us to do something. They can end in a full stop or exclamation mark.

**E** is for **Exclamation** – These sentences express excitement or emotion and start with 'what' or 'how'. They usually end in an exclamation mark.

**Q** is for **Question** – These sentences ask questions and end with a question mark.

**S** is for **Statement** – These sentences tell us facts and usually end with a full stop.

Example: what shall we do today

C  E  Q  S

**What shall we do today?**

1. who wants to go for a long walk in the woods

C  E  Q  S

2. the capital of france is paris

C  E  Q  S

3. freya is coming to my party on saturday

C  E  Q  S

4. what a lot of people

C  E  Q  S

5. lions are carnivores

C  E  Q  S

6. tell me where you are going C  E  Q  S

---

7. who is going to rishi s house on monday C  E  Q  S

---

8. don t talk like that C  E  Q  S

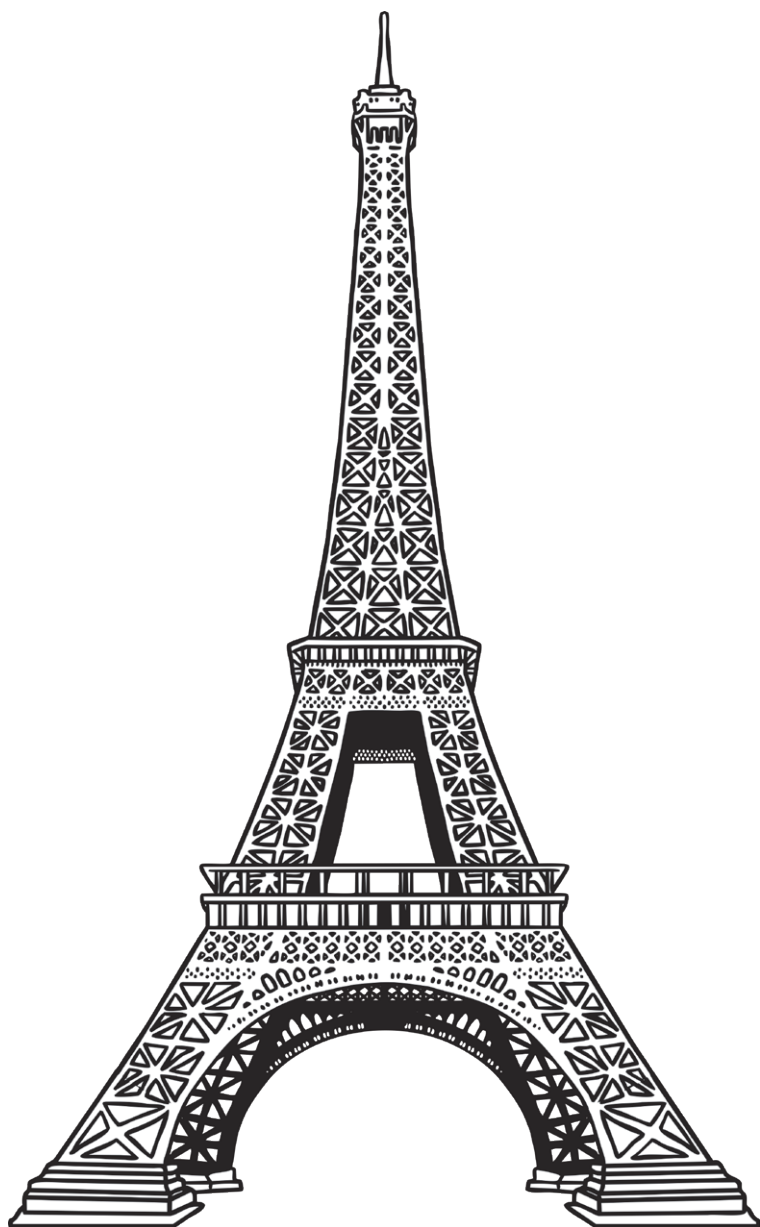
---

9. what a great day C  E  Q  S

---

Top Tip!

Don't forget the apostrophes in  
contractions (e.g. can't) or the  
possessive apostrophe (e.g. the  
girl's book).



# Correct the Sentences

Read each sentence and tick the correct sentence type. Then, copy the sentence onto the line below, adding ALL of the missing punctuation. The first one has been done for you.

**C** is for **Command** – These sentences tell us to do something. They can end in a full stop or exclamation mark.

**E** is for **Exclamation** – These sentences express excitement or emotion and start with 'what' or 'how'. They usually end in an exclamation mark.

**Q** is for **Question** – These sentences ask questions and end with a question mark.

**S** is for **Statement** – These sentences tell us facts and usually end with a full stop.

Example: what a lot of nonsense

C  E  Q  S

**What a lot of nonsense!**

1. what do caterpillars turn into

C  E  Q  S

2. my name is lucy and my birthday is in february

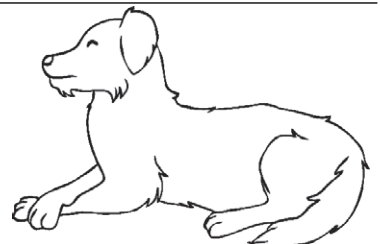
C  E  Q  S

3. ask madina to come to daniel s party on friday

C  E  Q  S

4. what an enormous dog we saw

C  E  Q  S



5. lions tigers and crocodiles are all carnivores C  E  Q  S

---

6. the tall giraffe was eating from the highest branches C  E  Q  S

---

7. where is sid s book that i left on my desk last wednesday C  E  Q  S

---

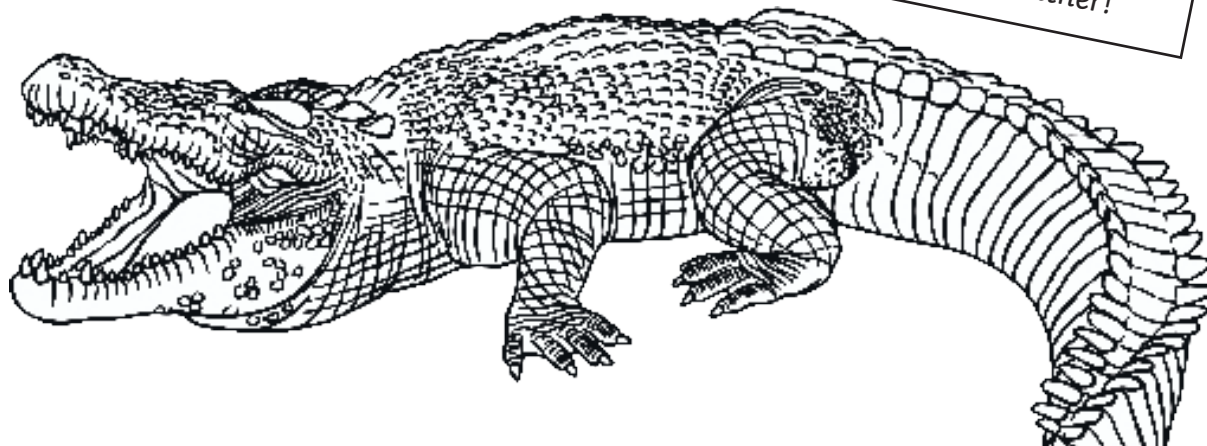
8. put your coat on your hook as soon as you get inside C  E  Q  S

---

9. how fantastic this piece of writing is C  E  Q  S

---

*Top Tip!*  
*Don't forget capital letters for names of people, places, days of the week and the personal pronoun, 'I'.*  
*Don't forget commas for lists and apostrophes for contractions and possessive forms, either!*



# Correct the Sentences Answers

Copy each sentence onto the line below, correcting and adding the missing punctuation.

**C** is for **Command** – These are orders that tell us to do something. They can end in a full stop or an exclamation mark.

come here right now

**Come here right now!**

stand still

**Stand still!**

**E** is for **Exclamation** – These sentences express excitement or emotion and start with 'what' or 'how'. They usually end in an exclamation mark.

how strange

**How strange!**

what a lot of people

**What a lot of people!**

**Q** is for **Question** – These sentences ask questions and end with a question mark.

where shall we go for lunch

**Where shall we go for lunch?**

who is going to share their cake with me

**Who is going to share their cake with me?**

**S** is for **Statement** – These sentences tell us facts and usually end with a full stop.

the first month of the year is january

**The first month of the year is January.**

sam is coming to my party on saturday

**Sam is coming to my party on Saturday.**

# Correct the Sentences Answers

Read each sentence and tick the correct sentence type. Then, copy the sentence onto the line below, correcting and adding the missing punctuation. The first one has been done for you.

**C** is for **Command** – These sentences tell us to do something. They can end in a full stop or exclamation mark.

**E** is for **Exclamation** – These sentences express excitement or emotion and start with 'what' or 'how'. They usually end in an exclamation mark.

**Q** is for **Question** – These sentences ask questions and end with a question mark.

**S** is for **Statement** – These sentences tell us facts and usually end with a full stop.

Example: what shall we do today    C     E     Q     S

**What shall we do today?**

1. who wants to go for a long walk in the woods    C     E     Q     S

**Who wants to go for a long walk in the woods?**

2. the capital of france is paris    C     E     Q     S

**The capital of France is Paris.**

3. freya is coming to my party on saturday    C     E     Q     S

**Freya is coming to my party on Saturday.**

4. what a lot of people C  E  Q  S

**What a lot of people!**

5. lions are carnivores C  E  Q  S

**Lions are carnivores.**

6. tell me where you are going C  E  Q  S

**Tell me where you are going.**

7. who is going to rishi s house on monday C  E  Q  S

**Who is going to Rishi's house on Monday?**

8. don t talk like that C  E  Q  S

**Don't talk like that!**

9. what a great day C  E  Q  S

**What a great day!**



# Correct the Sentences Answers

Read each sentence and tick the correct sentence type. Then, copy the sentence onto the line below, adding ALL of the missing punctuation. The first one has been done for you.

**C** is for **Command** – These sentences tell us to do something. They can end in a full stop or exclamation mark.

**E** is for **Exclamation** – These sentences express excitement or emotion and start with 'what' or 'how'. They usually end in an exclamation mark.

**Q** is for **Question** – These sentences ask questions and end with a question mark.

**S** is for **Statement** – These sentences tell us facts and usually end with a full stop.

Example: what a lot of nonsense

C  E  Q  S

**What a lot of nonsense!**

1. what do caterpillars turn into

C  E  Q  S

**What do caterpillars turn into?**

2. my name is lucy and my birthday is in february

C  E  Q  S

**My name is Lucy and my birthday is in February.**

3. ask madina to come to daniel s party on Friday

C  E  Q  S

**Ask Madina to come to Daniel's party on Friday.**

4. what an enormous dog we saw C  E  Q  S

**What an enormous dog we saw!**

5. lions tigers and crocodiles are all carnivores C  E  Q  S

**Lions, tigers and crocodiles are all carnivores.**

6. the tall giraffe was eating from the highest branches C  E  Q  S

**The tall giraffe was eating from the highest branches.**

7. where is sid s book that i left on my desk last wednesday C  E  Q  S

**Where is Sid's book that I left on my desk last Wednesday?**

8. put your coat on your hook as soon as you get inside C  E  Q  S

**Put your coat on your hook as soon as you get inside.**

9. how fantastic this piece of writing is C  E  Q  S

**How fantastic this piece of writing is!**