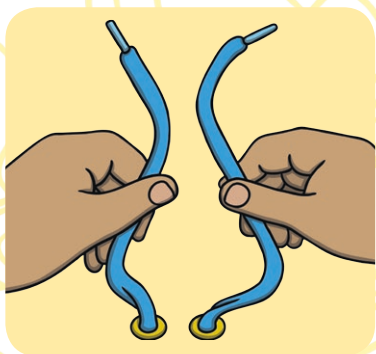
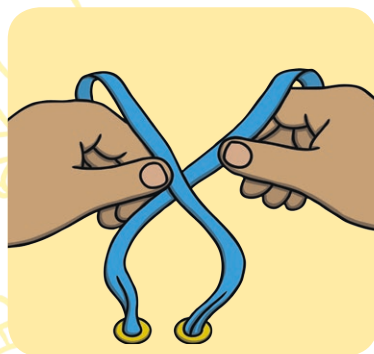


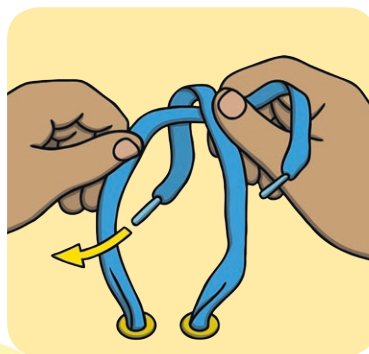
How to Tie Your Shoelaces



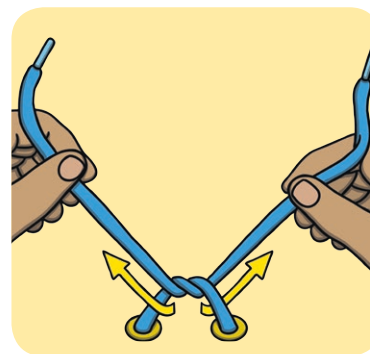
1. Take both laces in your finger tips and thumbs.



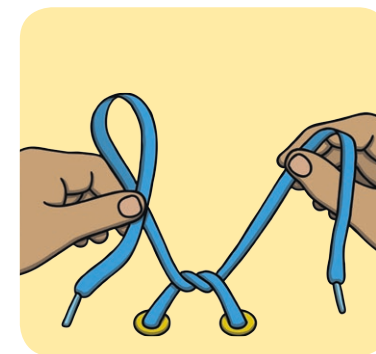
2. Fold the right lace over the left lace.



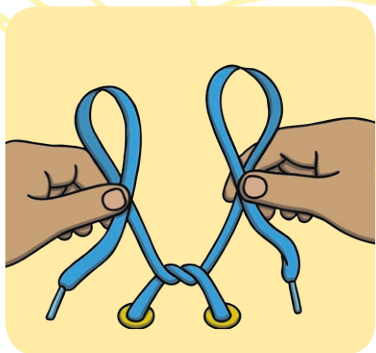
3. Fold the right lace over the top and push through the hole.



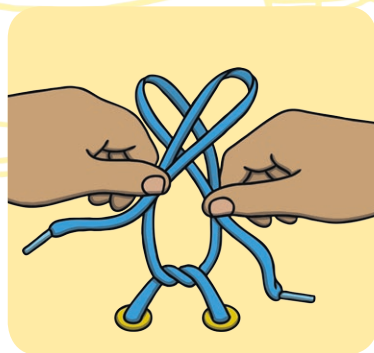
4. Pull both laces tight.



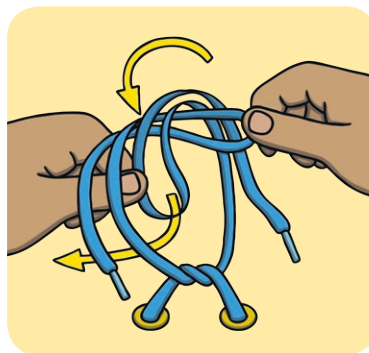
5. Take the end of one lace and fold it into a 'bunny ear'.



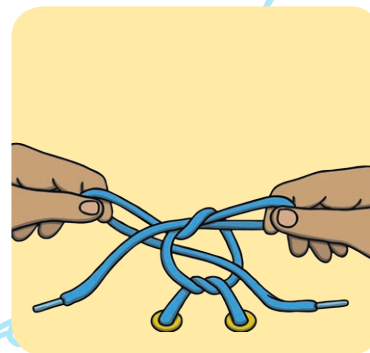
6. Do the same with the other lace and hold both 'ears' at the bottom.



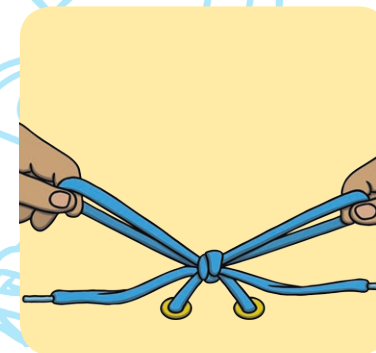
7. Make both bunny ears into an 'X' shape.



8. Fold one bunny ear over the top of the other and push through the gap.



9. Pull both bunny ears to the sides...



...and you've tied your laces!