



How to... set up Parental Controls on the Xbox 360™



The Xbox 360™ console lets you customise and manage your family's access to games, film and TV content. The Xbox 360™ Parental Controls can be used to control the console itself and also to control access to the online service, Xbox LIVE.

What is Xbox LIVE?

Xbox LIVE is the online entertainment service for Xbox 360. You can connect for free to rent and buy HD movies or download Xbox 360 games and keep them fresh with new songs, workouts and levels. With a Gold membership, you can play Kinect and controller games with friends wherever they are.



Parental Controls allow you to control things such as:

- Which games can be played (e.g. are they age appropriate?)
- Which films and TV shows can be watched (e.g. are they suitable for your child?)
- How long each family member can use the console on a daily or weekly basis
- Whether or not someone can access Xbox LIVE (e.g. do you want your child to be able to play games online against friends and other people?)

Parental Controls are divided into two groups: 'console controls' and 'online safety and privacy'. Console controls are located in the Family Settings or Family Centre area on your console (depending on your Xbox LIVE membership type).

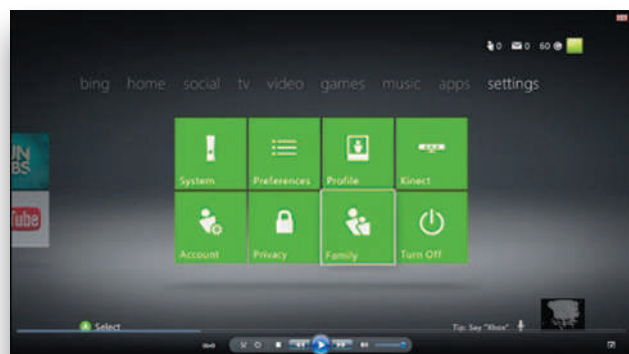
Step 1

Turn on console controls

- a. On your console, go to 'Settings', then select 'Family'
- b. Select 'On' to turn on Console Safety
- c. Enter a 4-button pass code using your controller
- d. Select 'Save and Exit'

Please note:

If you cannot see Settings on your console, you might be using an older version of the console software. You can find information on how to update your console software at www.xbox.com



Step 2

Decide what you want to control

Ratings and content

These settings let you restrict games and video content based on the content's rating. You can also set whether or not unrated or explicit content can be played on this console. You can even set up exceptions for individual games that are outside of the rating restrictions you have set.

Family Timer

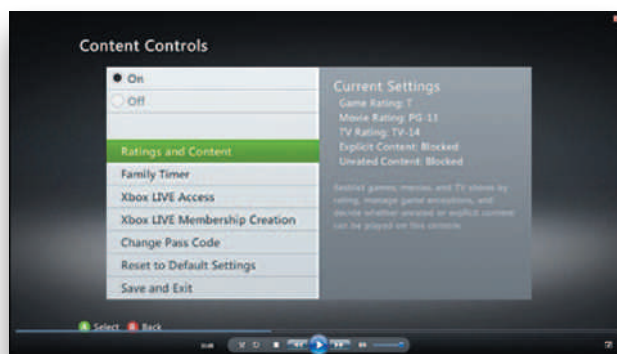
This setting allows you to limit the time that your console can be used on a daily or weekly basis.

Xbox LIVE access

This setting allows you to decide if your family can connect to Xbox LIVE from this console. Membership of Xbox LIVE enables you to do things like rent films and play games against other people online.

Xbox LIVE membership creation

This setting allows you to control whether or not new Xbox LIVE memberships can be created from your console.



Step 3

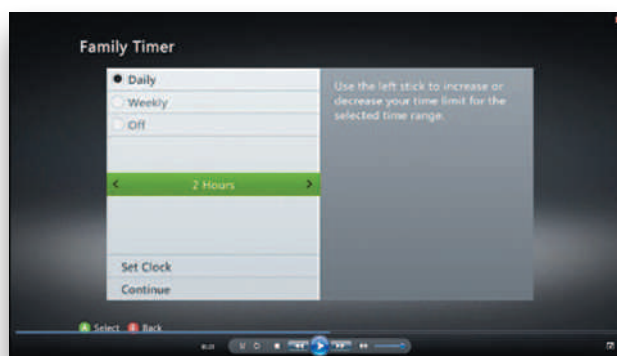
Set the Family Timer

Use the Family Timer to limit the amount of time that your family can use your console on a daily or weekly basis. Family members can see how much time remains by pressing the Guide button on the Xbox controller. When the time expires, the console shuts down and can't be used again until the Family Timer automatically resets the next day or week.

- On your console, go to 'Settings', then select 'Family'
- Select 'On' to turn on Console Safety

- Enter your 4-button pass code using your controller
- Select 'Family Timer'
- Select whether you want to set a 'Daily' or 'Weekly' timer
- Move down to the time period and use the left stick to increase or decrease the time period, then select 'Continue'
- Select 'Save and Exit'

When the Family Timer is on, notifications will appear 1 hour, 30 minutes, 15 minutes, and 5 minutes before the time runs out. These give players sufficient warning so that they can save



their games and come back to them at another time. However, when one of these notifications appear, you can add time or disable the timer altogether by entering the pass code.

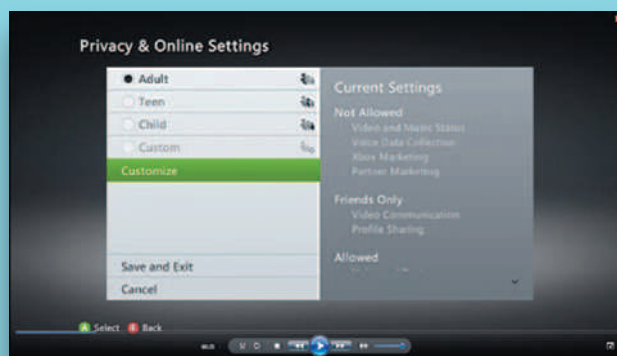
Xbox LIVE online safety and privacy

Xbox LIVE offers a variety of online safety and privacy settings so you can control the Xbox LIVE experience.

The default online safety and privacy settings are divided into three age groups: child, teen and adult. Xbox LIVE determines which default safety and privacy settings to use based on the birthdate that was entered when the Xbox LIVE account was created. The default 'child' setting does not allow video communication or purchases, for example.

You can, however, completely customise the default online safety and privacy settings to

whatever is best for you and your family. For example, you can choose whether to allow or block your child from online gameplay and accepting friend requests. You can also do things like tailor who can see their Xbox LIVE profile and determine whether they can upload photos they take while playing games to services like **Kinectshare.com**



To change your child's settings:

- Sign into Xbox LIVE using an adult account
- Go to 'Settings', and then select 'Family'
- Select the child account that you want to manage
- Go to 'Online Safety', and then select 'Change Settings'
- Change the settings to whatever you'd like
- To exit, press the 'B' button on your controller, and then choose 'Save and Exit'