

Cell Structure

1. Which structural feature is found in a plant cell and not in an animal cell?

- A Nucleus
- B Cell wall
- C Cell membrane
- D Cytoplasm

1. A group of students carried out an investigation into the variety of cell types.



The types of cell they examined are shown in the box below.

Animal	Plant	Bacterial	Fungal
--------	-------	-----------	--------

(a) (i) Identify the type(s) of cell which have a cell wall. 1

(ii) Identify the type(s) of cell which have a plasmid. 1

(iii) Some organelles are found in all cells.

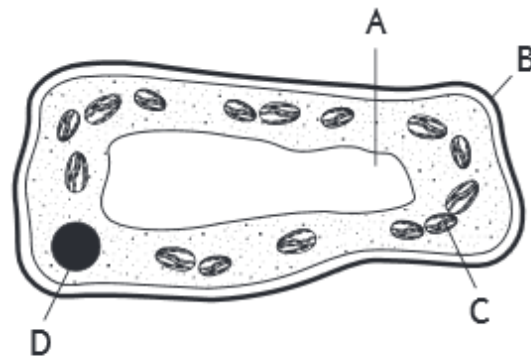
Choose one of the following organelles and tick (✓) the appropriate box.

Describe the function of the chosen organelle. 1

Ribosome Mitochondria

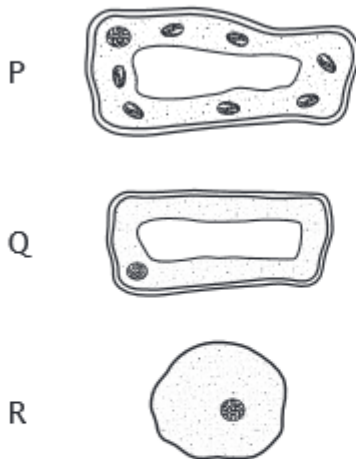
Function _____

1. The diagram below shows parts of a plant cell.



Which part of this cell is composed of cellulose?

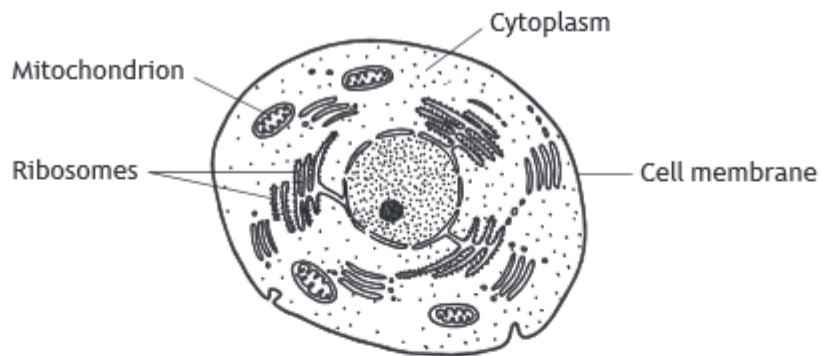
1. The following diagrams represent three different cells.



Identify the plant cell(s).

- A P and R only
- B P and Q only
- C P only
- D R only

1. (a) The diagram shows a typical animal cell and some of its structures.



Choose two of the structures labelled and state their functions.

2

1 Structure _____

Function _____

2 Structure _____

Function _____

- (b) The field of view of a light microscope measures 2 mm in diameter.
20 plant cells were counted in a line across the diameter.

1 mm = 1000 micrometres

Calculate the average size of a cell in micrometres.

1

Space for calculation