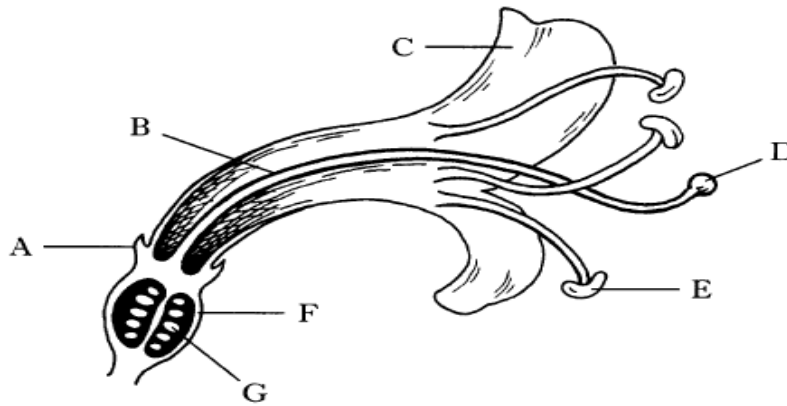


**Key Area 2.3**

**Homework 3 - Plant Reproduction**

1. The diagram shows part of a honeysuckle flower.



(a)(i) Which letter indicates a structure which produces male gametes?  
KU1

(ii) Give the name and function of the structure labelled D.

Name

KU1

Function

KU1

(iii) Give the letter and name of the structure which develops into a fruit.

Letter

KU1

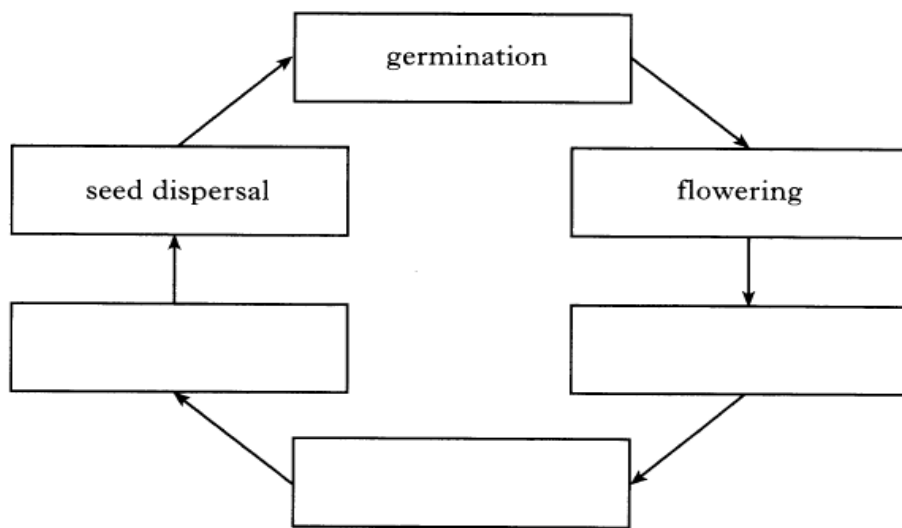
Name

KU1

(b) The diagram below shows stages in the life cycle of a flowering plant.  
Copy and complete the diagram below using words from the list.

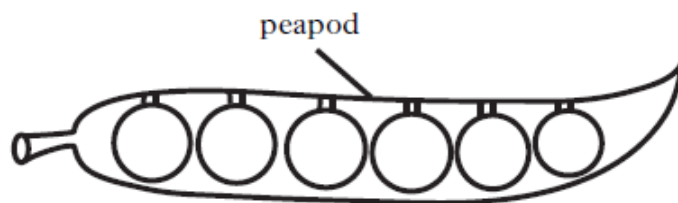
KU1

List: **fertilization** **fruit formation** **pollination**



2.A

peapod is the fruit of the pea plant.



- (a) Underline one word in each bracket to complete the following sentences correctly.

KU2

A fruit contains  $\left\{ \begin{array}{l} \text{seeds} \\ \text{ovules} \end{array} \right\}$  formed from fertilised  $\left\{ \begin{array}{l} \text{ovules} \\ \text{pollen} \end{array} \right\}$ .

The outer layer of the fruit is formed from the  $\left\{ \begin{array}{l} \text{ovary} \\ \text{stigma} \end{array} \right\}$ .

(b) Pea plant cells contain 14 chromosomes.

(i) How many complete sets of chromosomes does this represent?

\_\_\_\_\_ Sets

KU1

(ii) How many chromosomes are there in the sex cells of pea plants?

Space for calculation

\_\_\_\_\_ chromosomes

PRO1