

## Key Area 2.3 Homework 2

1. (a) The following list contains descriptions of stages in the reproduction of a mammal.

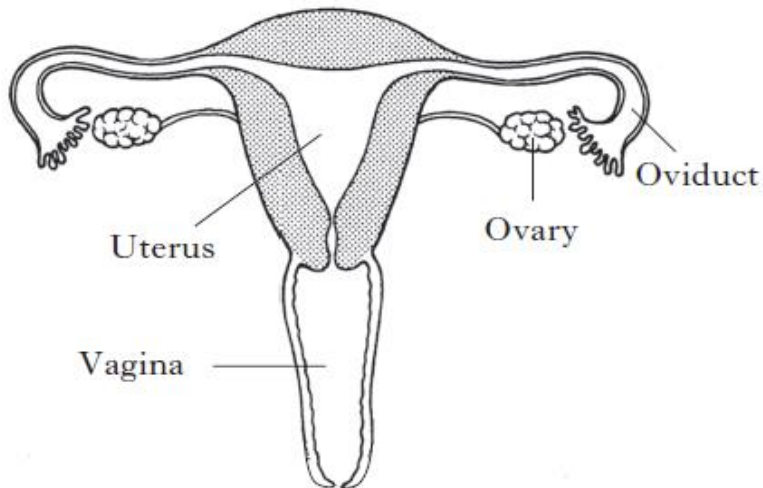
KU1

- A A sperm nucleus joins with an egg nucleus.
- B The embryo develops in the amniotic sac.
- C The embryo becomes attached to the uterus wall.
- D A fertilised egg passes down the oviduct.
- E The young animal is born.

Arrange the stages into the correct order by writing the letters into the boxes.



- (b) The diagram below represents the female reproductive system



In which of the named structures would the following take place?

- (i) Fertilisation

KU1

- (ii) Development of a foetus

KU1