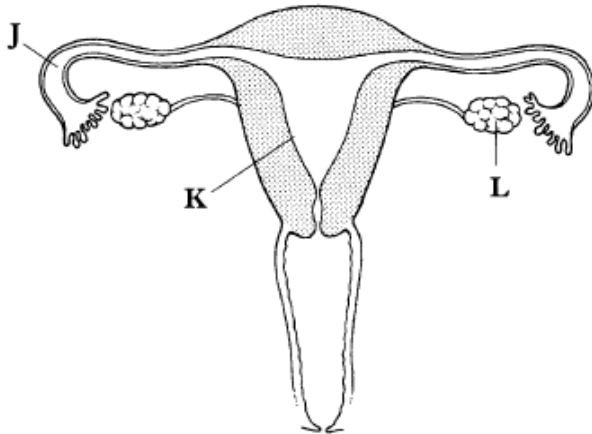


Key Area 2.3 - Homework 1

1. (a) The diagram represents the reproductive system of a human female.



(i) Name the parts labelled on the diagram.

J _____

K _____

L _____

KU2

(ii) In the table below, match each letter from the diagram to its correct function.

KU2

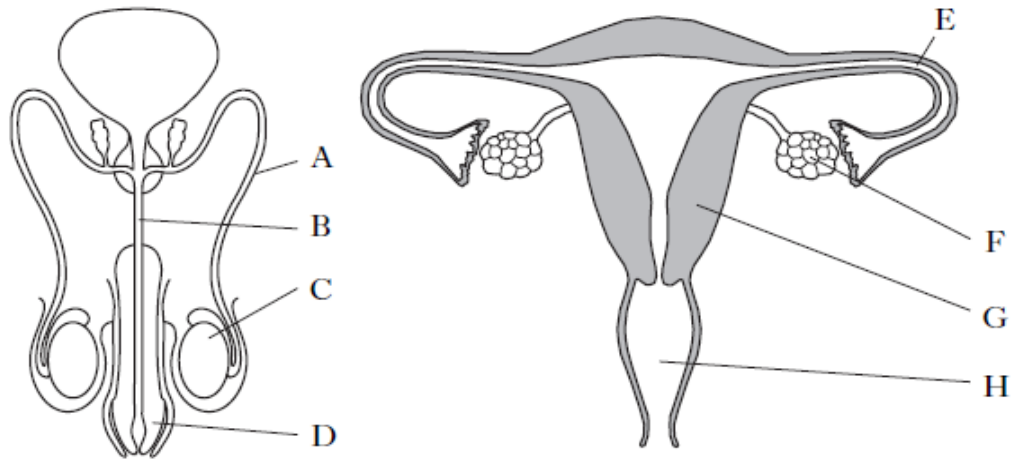
<i>Function</i>	<i>Letter</i>
Eggs produced	
Fertilisation takes place	
Fertilised egg becomes attached	

(b) Tick (✓) boxes in the table to indicate whether each of the following statements is true for eggs, sperm, or both.

KU2

<i>Statement</i>	<i>Eggs</i>	<i>Sperm</i>
Contain a food store for developing fetus		
Swim using a tail		
Produced in testes		
Are gametes		

2. The diagrams show the human male and female reproductive systems.



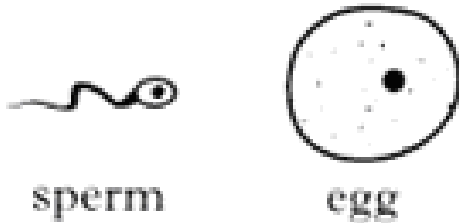
Complete the table with the correct names, functions and letters.

KU3

<i>Name</i>	<i>Function</i>	<i>Letter</i>
testis		
	where fertilisation takes place	E
		F

3. The diagram below shows a human sperm and egg cell.

Circle the appropriate letter to show the collective name given to a sex cell?



- A a zygote
- B a gamete
- C an ovule
- D an embryo

KU1

4. The process of fertilisation involves sperm and an egg. Describe the process of fertilisation.

KU2