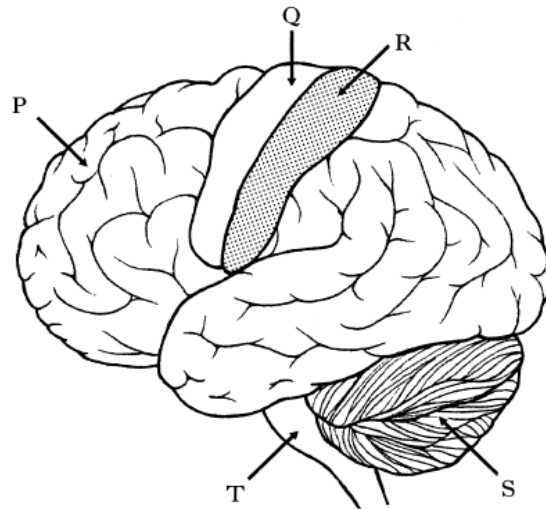


Key Area 2.2 - Homework 1

1. The following diagram shows the human brain.



(a) Complete the table to identify areas of the brain and their functions.

Name of area	Letter	Function
Sensory strip	R	Receives nerve impulses from the sense organs
Cerebellum		
	T	

KU2

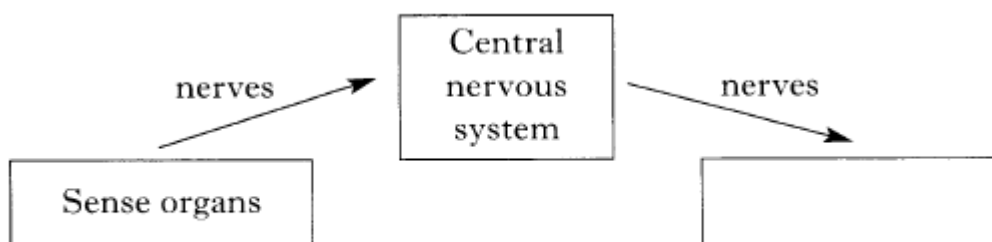
(b) The brain forms one part of the Central Nervous System (CNS). Name the other part.

KU1

(c) Name the type of neuron which links the receptors in the sense organs to the CNS.

KU1

2. The diagram represents the flow of information in the human nervous system.



(i) Complete the diagram by writing the missing word in the box. KU1

(ii) Name the two main parts of the central nervous system. KU1

3. a) Draw a line from each of the following parts of the brain to its correct function.

<i>Part</i>	<i>Function</i>
cerebrum	controls heart rate
cerebellum	controls balance
medulla	enables conscious thought and memory

KU2

b) Underline one option in each bracket to describe the flow of information in the nervous system.

Information from the environment is detected by the $\left\{ \begin{array}{l} \text{heart} \\ \text{sense organs} \\ \text{brain} \end{array} \right\}$

and sent to the $\left\{ \begin{array}{l} \text{central nervous system} \\ \text{circulation system} \\ \text{skin} \end{array} \right\}$ which responds by

sending messages to the $\left\{ \begin{array}{l} \text{muscles} \\ \text{blood} \\ \text{bones} \end{array} \right\}$.

KU2