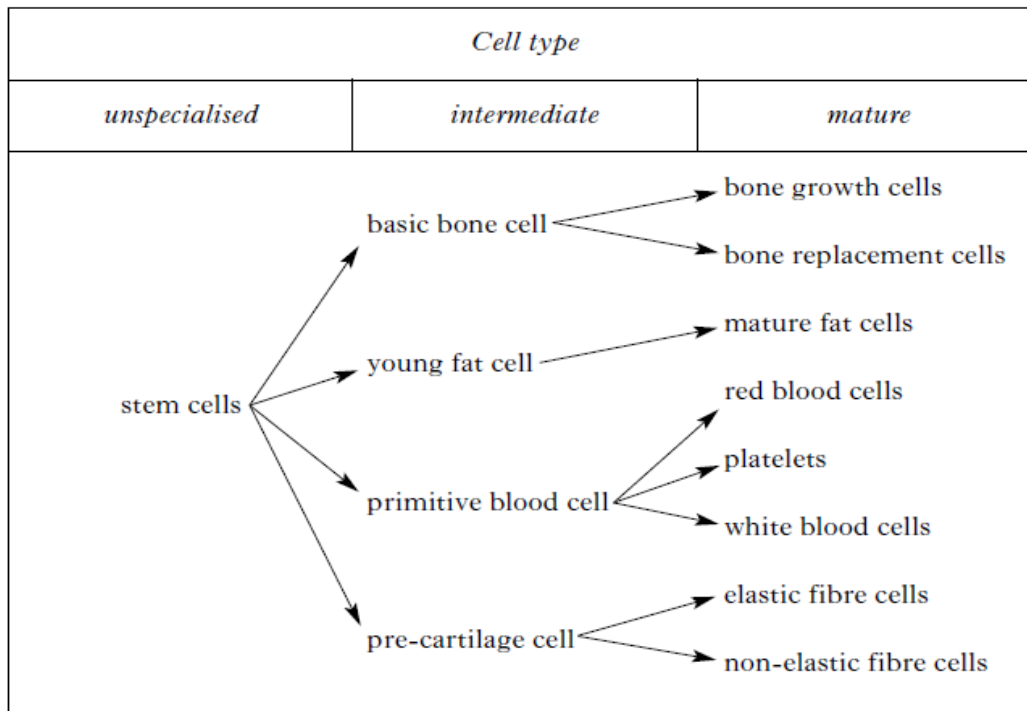


**Key Area 2.1 Homework 2.**

The chart shows how some specialised cell types are formed from stem cells.



1. (a) Can you describe the following:
  - (i) What are stem cells KU1
  - (ii) What are they able to do? KU1
  
- (b) What type of stem cell does the embryo contain? KU1

From the above table, answer the following questions:

2. (a) which intermediate cell can develop into the widest range of mature cell types? PS1
  
- (b) Which type of intermediate cell forms both elastic and non-elastic fibres? S1
  
- (c) At which stage in an animal's development are stem cells most abundant?