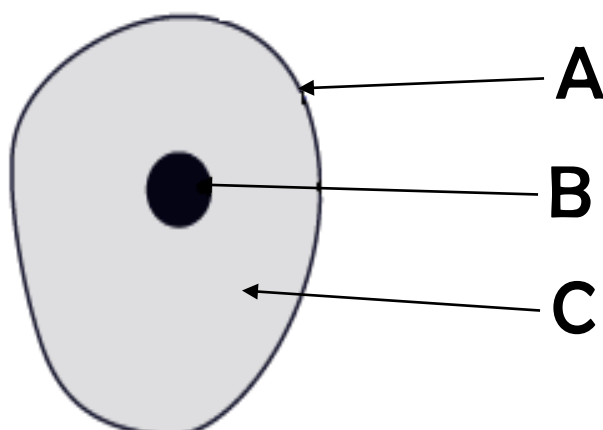


CELLS – CORE HOMEWORK 1

1. State what instrument is used to examine cells in biology? 1

2. Name the parts of the animal cell labelled A, B and C:



3

3. Name 3 parts of a plant cell which you will not find in an animal cell. 3

4. In a plant cell, name the green parts that trap sunlight to allow the plant to make food. 1

5. State what is meant by “tissue” in living things. 1

6. State what is formed when different tissues work together to carry out a function in a living thing. 1

Total 10

CELLS – CORE HOMEWORK 2

1. Match up the correct word, from the wordbank, to each of the clues below:

- (a) Catches grains of pollen with its sticky surface.
- (b) Contains female sex cells.
- (c) Holds up the anther.
- (d) These attract insects.
- (e) Produces pollen containing the male sex cells.
- (f) Produces the female sex cells.

wordbank

Petal

Anther

Stigma

Ovary

Filament

Ovule

6

2. Pollination is the transfer of pollen from the anther to the stigma, either of the same flower, or of another flower.

State 2 ways in which the pollen can be transferred.

2

3. After fertilisation, the ovaries become fruits and the ovules become seeds.

Give an example of one way that the seeds can be scattered.

1

4. State the three conditions required for seeds to germinate.

1