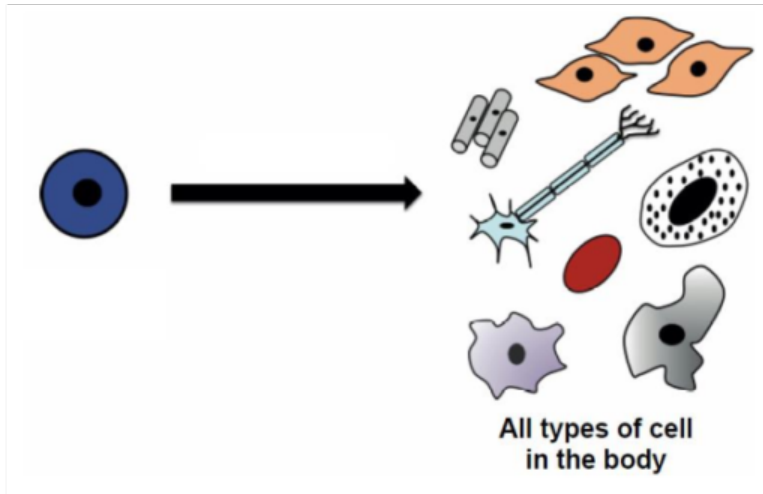


Homework 1

1. (a) The diagram below shows many different specialised cells. Explain the term 'a specialised cell'.

KU1



- (b) Describe how a red blood cell is specialised for its function.

KU1

- (c) Put the following structure in order from smallest to largest.

KU1

cell system organ tissue

- (d) Copy and complete the table below with three examples of systems in animals.

KU3

System	Function	Organs in this system	Cells in this system
Cardiovascular			
Nervous System			
Female Reproductive System			