

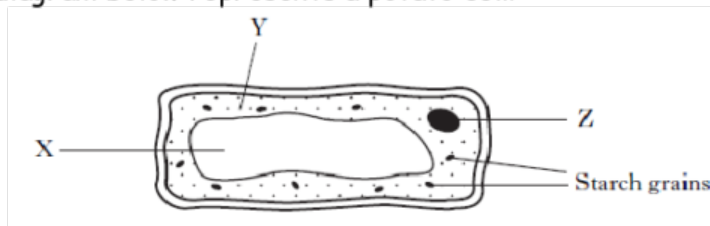
Homework 1

1. a) Copy selecting one option in each set of brackets to complete the following sentences correctly.

The basic units of living organisms are { tissues
cells
organs }. Most of them can only be seen using a microscope. When examining them they can be stained with, for example, iodine to { make them divide
make them clearer
magnify them }.

KU1

- b) The diagram below represents a potato cell.

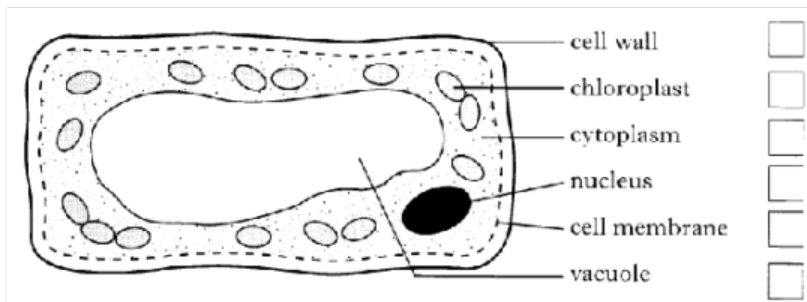


- i) Name the parts of the cell labeled X and Y.
ii) Give the function of structure Z.

KU1

KU1

2. The diagram shows some of the structures found in a typical plant cell.



- (a) Which labels refer to parts of the cell found in an animal cell?

KU1

- (b) Why are cells often stained before being viewed under a microscope?

KU1