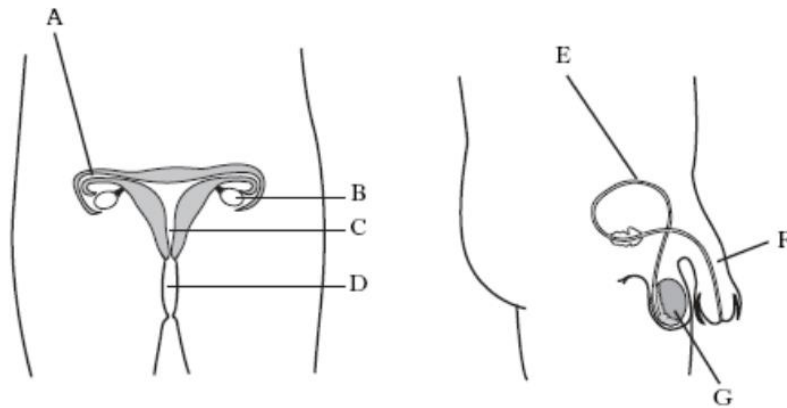


DNA AND REPRODUCTION – CORE HOMEWORK 1

1. The diagrams below represent parts of the human male and female reproductive systems



Copy and complete the table below by adding the correct letters, names and functions of the labelled structures.

<i>Letter</i>	<i>Name</i>	<i>Function</i>
A		site of fertilisation
F		deposits sperm
B	ovary	
G	testis	
	uterus	

3 marks

2. Use the words from the list to copy and complete the following sentences. Each word may be used more than once or not at all.

List

water	nucleus	membrane
ovary	oviduct	uterus

Fertilisation occurs when the _____ of a sperm fuses with the _____ of an egg cell. In mammals this happens inside the female body in the _____. In most fish, sperm are deposited in the surrounding _____ close to the eggs.

2 marks

DNA AND REPRODUCTION – CORE HOMEWORK 1

- 3.a) Copy the table below then tick the boxes to indicate whether each of the statements is true for eggs or sperm or both.

Statement	Eggs	Sperm
Contain a food store for developing fetus		
Swim using a tail		
Produced in the testes		
In most fish, are deposited in the water		
Are sex cells (gametes)		

2 marks

- 3.b) State the number of chromosomes in a human egg cell.

1 mark

4. State the word used to describe a fertilised egg.

1 mark

5. State what is meant by the term 'gametes'.

1 mark