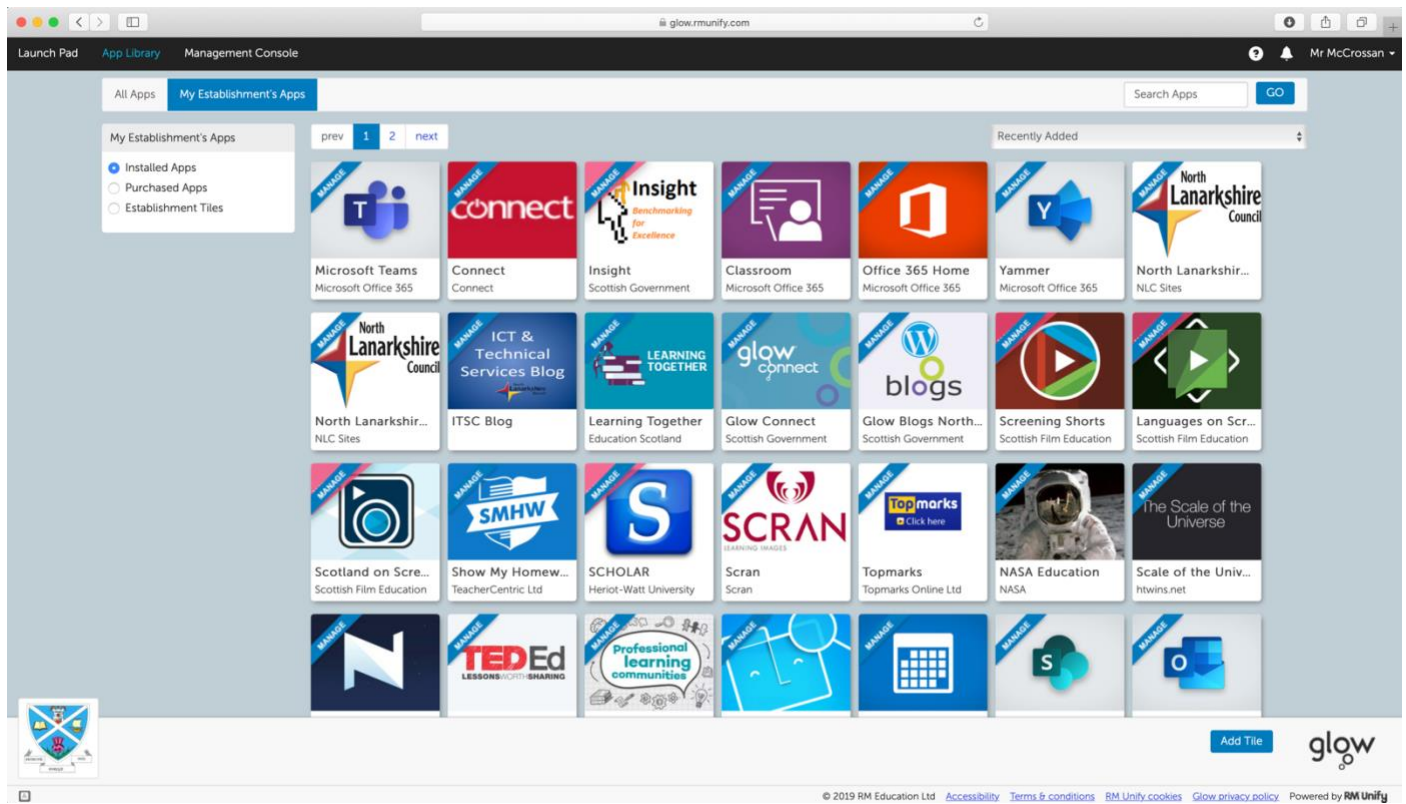


Adding apps to your Glow Launch Pad

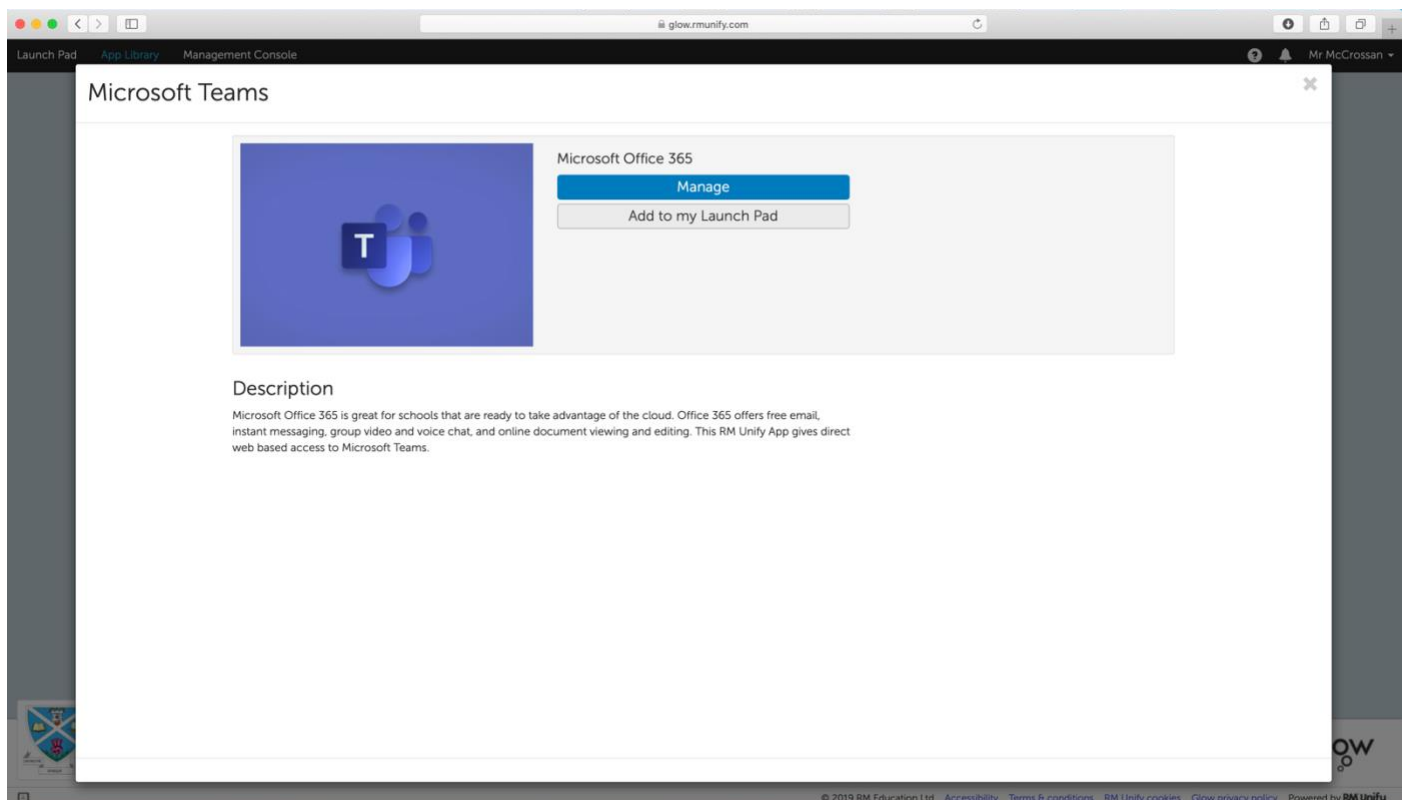
Step 1

Click on the **App Library** tab and then click **My Establishment's Apps**. This will show you a list of the all the apps available to the school.



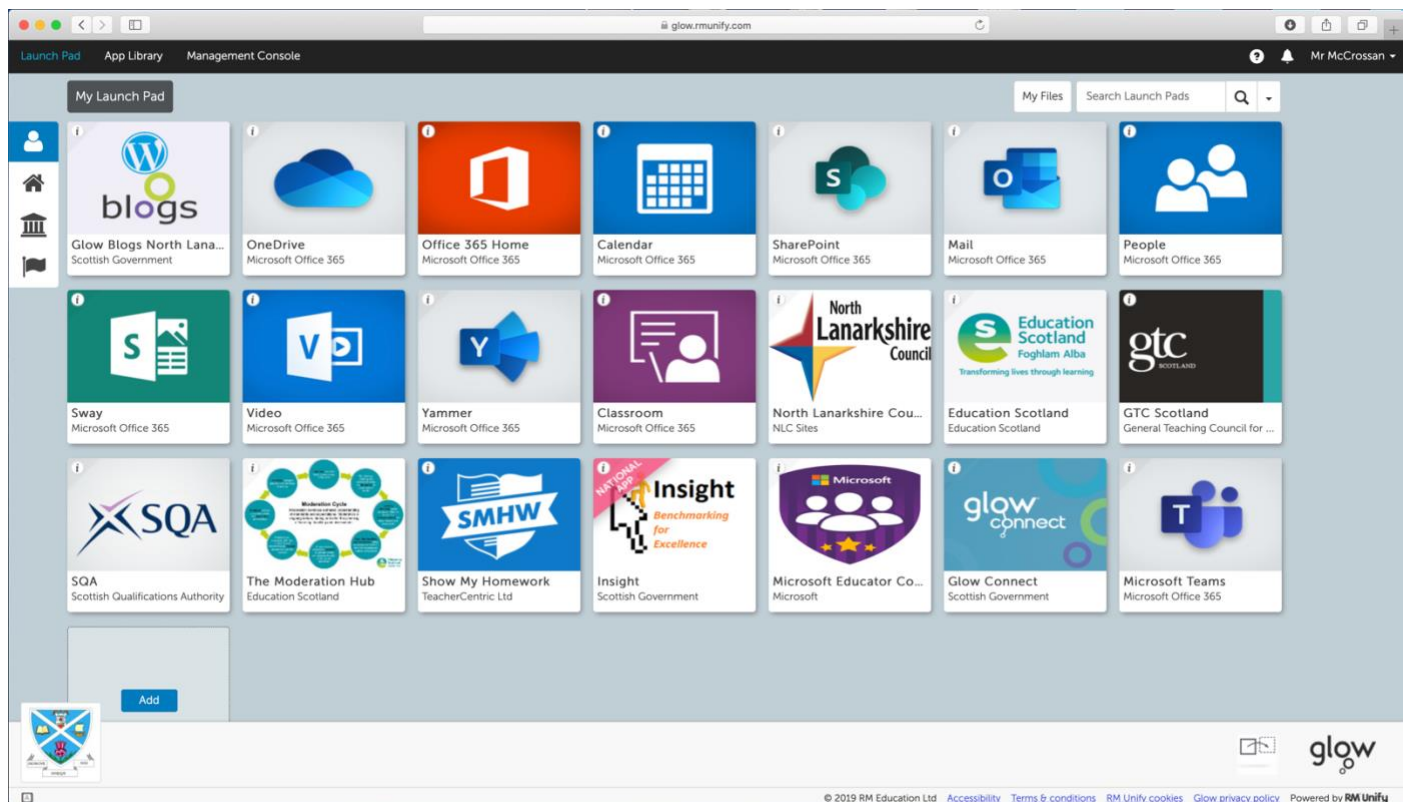
Step 2

Click on the relevant app and then click on **Add to my Launch Pad**



Step 3

Voila, the app will then appear on your Launch Pad whenever you log into Glow.



Step 4

Recommended Apps to add to your Launch Pad

- Microsoft Teams
- Show My Homework
- OneDrive
- Microsoft Office 365 Home
- Mail

Remember with Glow you have access to Microsoft Office 365 which gives you access to the likes of programmes such as Word, Excel, Forms, OneNote & PowerPoint.