

CONSULTATION DOCUMENT

NORTH LANARKSHIRE COUNCIL

EDUCATION, YOUTH & COMMUNITIES

NORTH LANARKSHIRE COUNCIL IS CARRYING OUT A CONSULTATION ON A PROPOSAL TO INCREASE THE QUALIFICATION FOR THE ENTITLEMENT TO FREE SCHOOL MAINSTREAM TRANSPORT FOR SECONDARY SCHOOL PUPILS FROM THE CURRENT 2 MILES FROM THEIR RESIDENCE TO THEIR CATCHMENT SCHOOL TO MORE THAN 3 MILES FROM THEIR RESIDENCE TO THEIR CATCHMENT SCHOOL

Closing Date for responses : 9th January 2018

8 public meetings will be held as follows, covering each local area partnership areas:-

Coatbridge	St Andrew's High, Coatbridge - Tuesday 21 November 7pm-9pm
Wishaw	Clyde Valley High, Wishaw – Wednesday 22 November 7pm-9pm
Bellshill	Cardinal Newman High, Bellshill – Thursday 23 November 7pm-9pm
Kilsyth	Kilsyth Academy, Kilsyth – Friday 24 November 7pm-9pm
Cumbernauld	Greenfaulds High, Cumbernauld – Tuesday 28 November 7pm-9pm
Northern Corridor	Chryston High, Chryston – Wednesday 29 November 7pm-9pm
Airdrie	St Margaret's High, Airdrie – Thursday 30 November 7pm-9pm
Motherwell	Our Lady's High, Motherwell – Friday 1 December 7pm-9pm

This consultation document has been prepared and issued by North Lanarkshire Council Education, Youth & Communities in accordance with the Schools (Consultation) (Scotland) Act 2010.

If you need information in another language or format, please contact us to discuss how we can best meet your needs. Email: secondarytransportconsultation@northlan.gov.uk

Contents:

1. Background
2. The Statutory Consultation Process
3. Proposal
4. Proposed Implementation Date
5. Educational Benefits
6. Equality & Human Rights Impact Assessment
7. Community Impact
8. Inaccuracies or Omissions
9. Consultation Process

NORTH LANARKSHIRE COUNCIL
EDUCATION, YOUTH & COMMUNITIES

EDUCATION CONSULTATION ON THE PROPOSAL TO INCREASE THE QUALIFICATION FOR ENTITLEMENT TO FREE SCHOOL MAINSTREAM TRANSPORT FOR SECONDARY SCHOOL PUPILS FROM THE CURRENT 2 MILES FROM THEIR RESIDENCE TO THEIR CATCHMENT SCHOOL TO MORE THAN 3 MILES FROM THEIR RESIDENCE TO THEIR CATCHMENT SCHOOL

1. BACKGROUND

North Lanarkshire Council is carrying out a statutory Education Consultation on the proposal to increase the qualification for the entitlement to free school mainstream transport for secondary school pupils from the current 2 miles from their residence to their catchment school to more than 3 miles from their residence to their catchment school.

- 1.1 Section 51 of the Education (Scotland) 1980 Act requires education authorities to make such arrangements as they consider necessary for pupils' conveyance without charge for the whole or part of their journey to and from school, for making suitable means of transport available, or paying the whole or part of their reasonable travelling expense. The act establishes the maximum distance that pupils can be expected to walk to school. This is 2 miles for pupils up to 8 years of age and 3 miles for all other pupils. For practical and planning reasons North Lanarkshire Council interprets the limits as 2 miles for primary pupils and 3 miles for secondary pupils.
- 1.2 North Lanarkshire Council currently operate a distance criteria which is more generous than the legal requirements. Free school transport is provided for mainstream pupils in the following categories:
 - (1) Primary pupils who reside more than one mile (1609m) from their catchment school and secondary school pupils who reside more than two miles (3218m) from their catchment school.
 - (2) Pupils who have been recommended for transport on health grounds by a designated medical officer.
 - (3) Pupils who would require to walk a route assessed as unsafe for children. The Council's criteria for assessing safe walking routes are based on the child being accompanied by a responsible adult.
- 1.3 The council currently provides free transport for 8,147 pupils; around 5,508 secondary pupils and around 2,639 primary pupils. This includes over 500 privilege transport pupils which are allocated in accordance with the Council's policy for privilege transport. The 2017/18 budget for mainstream transport is £5,533,382.
- 1.4 Over recent years there has been a trend for authorities to review their transport provision and to implement the statutory distance thresholds to determine entitlement. The current

position at date of preparation of the consultation paper in various Scottish local authorities is outlined in Appendix A.

2 THE STATUTORY CONSULTATION PROCESS

2.1 The current requirements for consulting in relation to denominational schools are set out in Schedule 1, paragraph 8 of the Schools (Consultation) (Scotland) Act 2010. This consultation will be carried out in accordance with the Act.

2.2 This consultation has been planned in order to meet the following statutory requirements:

- (1) The consultation document sets out the details of the proposal and its proposed implementation date;
- (2) The proposal paper details the educational benefits of the proposal and other relevant information;
- (3) The proposal paper will be published and widely advertised.
- (4) North Lanarkshire Council will seek to determine whether there are inaccuracies or omissions within the proposal paper and take such action as it considers necessary.
- (5) The consultation period will be a period of at least 6 weeks, including at least 30 school days.
- (6) Prior to the commencement of the consultation period the authority will give notice of the proposal to the relevant consultees. The relevant consultees are defined in Schedule 1, paragraphs 8 and 12 of the Schools (Consultation) (Scotland) Act 2010 As Amended, and are as follows:

Statutory consultees:

- The Parent Council of affected schools
- The parents/carers of the pupils at the affected schools
 - Parents whose children are expected to attend the affected schools within 2 years of publication of the proposal document
- Pupils (where they are considered to be of suitable age and maturity)
- Staff at the affected schools
- Trade Union representatives
- Church representatives of the affected schools
- Any other education authority that is considered relevant

Other stakeholders who will be contacted:

- Education Scotland
- Elected Members
- SPT/local school transport providers
- Police Scotland
- Roads and Transportation colleagues
- General Public
- Community Councils

- (7) During the consultation period, the authority will hold, and be represented at, eight public meetings regarding the relevant proposal.
- (8) The council will notify Education Scotland of the proposal and following the end of the consultation, provide Education Scotland with copies of the written representations, a summary of oral representation made at the public meetings and any other relevant documents. Education Scotland will prepare an independent report on the educational aspects of the proposal.
- (9) Following the consultation period, the council will prepare and publish a consultation report. The report will be published at least three weeks before a final decision is taken on the proposal.

The consultation timeline is included in Appendix B of this consultation document.

3. PROPOSAL

- 3.1 The proposal is to increase the qualification for entitlement to free school transport for secondary pupils from more than 2 miles from their residence to their catchment school to more than 3 miles from their residence to their catchment school.

This proposal does not affect the transport arrangements for pupils with additional support needs.

Under the terms of the proposal it would be a parent's/carer's responsibility to get their child to secondary school where they live less than 3 miles from their school. The only exception to this would be where a walking route was deemed to be unsafe in accordance with the Council's assessment criteria for safe walking routes to schools

- 3.2 In preparing for this consultation regarding the revised entitlement threshold for secondary school transport Education, Youth and Communities has examined routes. Distances have been measured and possible walking routes identified. These routes will be reassessed by officers in Roads and Transportation in line with the approved criteria, a copy of which can be found in Appendix C.
- 3.3 The current projection is that circa 2,838 secondary school pupils will remain eligible for free transport with 2,670 affected by the reduced entitlement. Appendix D details the entitled number of pupils affected by this proposal on a school by school basis. The total saving will be up to £386,367 in 2018/19 and £857,867 in 2019/20. The final level of saving sum will largely be determined by the safety assessment of walking routes.
- 3.4 The service will maintain close contact with SPT to ensure the revised contract arrangements are efficiently procured and effectively managed. In addition, the council will encourage SPT to promote the provision of paid services in areas where substantial demand is anticipated.

4. PROPOSED IMPLEMENTATION DATE

It is anticipated that the introduction of any change of entitlement would be phased in from January 2019.

5. EDUCATIONAL BENEFITS

Two of the five strategic priorities, as outlined in the North Lanarkshire Business Plan are directly relevant to this proposal, these are:

- Supporting all children to realise their full potential; and
- Improving the health and wellbeing and care of communities.

Recognised within the programme of work set out in the Business Plan to support these priorities are a number of delivery priorities established to ensure that the Education service maintains a clear focus on those most in need and implement action to raise attainment, close the poverty related attainment gap and improve wellbeing. These delivery priorities include for example:

- School transport which ensures pupils arrive at school ready to learn; and
- Key life skills to all children to build their resilience (e.g. outdoor learning, road safety awareness, walk or cycle to school, money and consumer advice).

Although North Lanarkshire Council's current school transport policy is to provide free transport to secondary school pupils who reside more than 2 miles from their catchment school and to provide primary school pupils who reside more than 1 mile from their catchment school, the Council now requires to consider whether the current level of provision is sustainable when revenue budgets are reducing year on year and this represents an enhanced level of provision in terms of that which is required under the Education (Scotland) Act 1980.

The provision of school transport which ensures pupils arrive at school ready to learn would not be significantly adversely affected by the proposal to provide transport in line with the minimum requirements outlined the Education (Scotland) Act 1980.

Indeed, the proposal provides an opportunity to :

- (1) Ensure that core aspects of learning and teaching delivered via a reducing Council Education Budget are not adversely impacted by the Council's requirement to make savings.
- (2) Continue to prioritise and invest in early intervention and preventative approaches to improve outcomes for our children and young people that, for example, reduce the percentage of children in North Lanarkshire achieving their healthy weight target (a targeted reduction of from 81% in 2016/17 to 85% in 2019/20) via promoting more active travel to school.

North Lanarkshire Council's Financial Plan

In September 2017, North Lanarkshire Council approved a report outlining the 5 year Financial Plan 2018/19 to 2022/23, the report states that there is a great deal of economic uncertainty facing Local Government and that it is apparent that further, potentially significant funding reductions should be anticipated. Moving forward the Council will face increasingly difficult decisions about how best to direct reducing budgets.

This secondary school transport proposal would result in an estimated annual saving to North Lanarkshire Council of up to £1,244,234 annually. If this proposal were not to be implemented, this may have an adverse impact on not only the budget position of the Education, Youth and Communities but also on levels of direct core service provision thereby directly impacting learning and teaching and the Council's drive to improve attainment and reduce the poverty related attainment gap. Any savings required may also require to be taken from other valued, Council services with potentially greater impact on essential direct service provision and therefore communities.

If the proposal were to be implemented the Council would work closely with organisations such as; Cycling Scotland, Living Streets Scotland and Sustrans who offer resources, activities and funding opportunities to help support an approach which promotes active travel to school which it is recognised can have the following impacts:-

- "Supports and enriches delivery of the Curriculum for Excellence and helps boost concentration and prepare pupils to learn and achieve.
- Supports the principles of GIRFEC, including Healthy, Achieving, Active and Responsible.
- Recommended by the Chief Medical Officer (CMO) as a way of meeting physical activity requirements and supports good mental health and wellbeing.
- Addresses School traffic problems, congestion and reduced emissions which contribute to our air quality"

(Supporting Safer Active Travel in Schools) www.sustrans.org.uk

Education, Youth and Communities will review School travel plans and ensure that these form part of school improvement plans should the proposal go ahead.

6 EQUALITY AND HUMAN RIGHTS IMPACT ASSESSMENT

- 6.1 A full equality impact assessment will be carried out on this proposal. The assessment will be informed by the consultation responses. Where any adverse impact has been identified any mitigating action that can be taken will be included within the consultation report.

The equality and human rights impact assessment will be published on the Council website at the same time as the consultation report.

7 COMMUNITY IMPACT

The likely effect of this proposal on the local community and the impact of different travelling arrangements will be examined in more detail during the consultation process.

8 INACCURACIES OR OMISSIONS

- 8.1 Where inaccuracies or omissions are discovered within this proposal document, the Council will determine whether relevant information has been omitted or, if there has been an inaccuracy. Appropriate action will then be taken by the Council which may include issuing corrections, issuing a corrected proposal document or an extension of the consultation period. In any of these events all relevant consultees (and where applicable the notifier(s) of any omissions or inaccuracies) and Education Scotland will be advised of the appropriate action. Notifiers of any omissions or inaccuracies will also be given the opportunity to make representations if they disagree with the Council's determination of and

any action on the matter, which may result in the Council making a further determination/decision on the matter.

9 CONSULTATION PROCESS

9.1 At its meeting on 7 November 2017 North Lanarkshire Council's Education Committee agreed to proceed with the consultation and publish this consultation proposal paper.

9.2 It is very important that all statutory consultees, other stakeholders and all interested parties note that the Education Committee has not taken a final decision on the proposal.

Following the consultation period the council is required to prepare and publish a consultation report. This report will be considered by the Education Committee at the conclusion of the statutory consultation period.

9.3 As part of the consultation a public meeting will be held at 8 locations on the following dates:-

Place	Date/Time
St Andrew's High, Coatbridge	21 st November 7pm-9pm
Clyde Valley High, Wishaw	22 nd November 7pm-9pm
Cardinal Newman High, Bellshill	23 rd November 7pm-9pm
Kilsyth Academy, Kilsyth	24 th November 7pm-9pm
Greenfaulds High, Cumbernauld	28 th November 7pm-9pm
Chryston High, Chryston	29 th November 7pm-9pm
St Margaret's High, Airdrie	30 th November 7pm-9pm
Our Lady's High, Motherwell	1 st December 7pm-9pm

9.4 The meetings will provide those in attendance with the opportunity to:

- 1) Hear about the proposal.
- 2) Ask questions about the proposal.
- 3) Express views about the proposal.

Officers from the Education, Youth and Communities Service will be present to answer any questions about the proposal.

A note will be taken of the views expressed during the public meeting and any questions asked. In addition to the public meeting, written representation can also be made during the consultation period.

- 9.5 All interested parties are invited to send their views on the proposal , using the consultation form attached to this document as Appendix E, to Secondary School Transport Consultation, Education, Youth & Communities, Municipal Buildings, Kildonan Street, Coatbridge, ML5 3BT, by no later than 9th January 2018. Alternatively, comments can be submitted by e-mail to secondarytransportconsultation@northlan.gov.uk. These views will be taken into account by the Education Committee in making its final decision regarding the proposal.
- 9.6 Copies of the consultation document are available from Education, Youth and Communities at the above address, schools and at local libraries. It is also available on the council's website.
- 9.7 The report on the consultation will also be available at these locations at least three weeks prior to a final decision on the proposal being made.
- 9.8 The consultation document can be made available in other formats or languages. Please contact North Lanarkshire Council Education, Youth and Communities by e-mailing secondarytransportconsultation@northlan.gov.uk and we will be happy to make the necessary arrangements to meet your needs.

Appendix A

SCHOOL TRANSPORT - DISTANCE CRITERIA IN PLACE IN VARIOUS SCOTTISH LOCAL AUTHORITIES 2017/18

AUTHORITY	PRIMARY SCHOOLS	SECONDARY SCHOOLS
North Lanarkshire	1 mile	2 miles
Aberdeen City	2 miles	3 miles
Aberdeenshire	2 miles	3 miles
Angus	2 miles	3 miles
Argyll and Bute	Under 8 years 2 miles Over 8 years 3 miles	Over 8 years 3 miles
Comhairle Nan Eilean Siar	2 miles	3 miles
Clackmannanshire	Under 8 years 1 mile Over 8 years 2 miles	Over 8 years 2 miles
City of Edinburgh	2 miles	3 miles
Dumfries & Galloway	Under 8 years 2 miles Over 8 years 3 miles	Over 8 years 3 miles
Dundee	3 miles (2 if in receipt of Free School Meal)	3 miles (2 if in receipt of Free School Meal)
East Dunbartonshire	1 mile	3 miles
East Ayrshire	1.5 miles	3 miles
East Lothian	2 miles	2 miles
East Renfrewshire	2 miles	3 miles
Falkirk	Under 8 years 1 mile Over 8 years 2 miles	Over 8 years 2 miles

SCHOOL TRANSPORT - DISTANCE CRITERIA IN PLACE IN VARIOUS SCOTTISH LOCAL AUTHORITIES 2017/18

AUTHORITY	PRIMARY SCHOOLS	SECONDARY SCHOOLS
Fife	1 mile	2 miles
Glasgow	1.2 miles	2.2 miles
Highland	Under 8 years 2 miles Over 8 years 3 miles	Over 8 years 3 miles
Inverclyde	1 mile	2 miles
Midlothian	2 miles	2 miles
Moray	2 miles	2 miles
North Ayrshire	2 miles	3 miles
Orkney	Under 8 years 2 miles Over 8 years 3 miles	Over 8 years 3 miles
Perth and Kinross	2 miles	3 miles
Renfrewshire	1 mile	2 miles
Scottish Borders	2 miles	3 miles
Shetland Islands	Under 8 years 2 miles Over 8 years 3 miles	Over 8 years 3 miles
Stirling	2 miles	2 miles
South Lanarkshire	1 mile	2 miles
South Ayrshire	2 miles	3 miles
West Dunbartonshire	1 mile	2 miles
West Lothian	1.5 miles	2 miles

Key Dates in Consultation Timeline

Stages	Timeline	Date
1. <i>Committee Date</i>	N/A	Tuesday 7 November 2017
2. <i>Consultation Starts Phase 1</i>	Minimum of 6 weeks To include 30 school days	Monday 13 November 2017
3. <i>Public Meetings</i>		Mon, Tues, Wed, Thurs 21 st , 22 nd , 23 rd , 24 th Tues, Wed, Thurs 28 th , 29 th , 30 th November and Friday 1 st December 2017
4. <i>Consultation Ends</i>	30 Days	Tuesday 9 January 2018
5. <i>Report to Education Scotland Phase2</i>	3 weeks	Tuesday 30 January 2018
6. <i>Consultation report published Phase 3</i>	No specified timescale	
7. <i>Time for further consideration</i>	3 weeks	
8. <i>Final Committee Decision</i>		

**GUIDELINES FOR THE ASSESSMENT OF THE SAFETY
OF WALKING ROUTES TO SCHOOL**

Principles for assessment:

1. In assessing the safety of a particular route, consideration is given only to danger relevant to traffic/road/condition.
2. Each case will be measured against the criteria set by North Lanarkshire Council.
3. The criteria is based on the fact that the child will be accompanied as necessary by a parent.

Procedures:

1. Education, Youth and Communities must define accurately the actual route to be assessed.
2. The route will then be split into discrete lengths with similar conditions.
3. Assess the safety of each discrete length based on the criteria for assessment.
4. If any discrete length fails then the route will be deemed to be inadequate.
5. Recommendations will then be made to Education, Youth & Communities.

Criteria:

1. Assessments will be carried out in the morning at the time when pupils are on their way to school. Note should be taken of any special requirements on return journey which may apply on afternoon return from school. If decided necessary the return journey will be assessed as well.
2. Each discrete length will be examined and safety assessed.
3. Safety will be assessed by considering the following:
 - (a) Is a footway/footpath provided Yes/No
 - (b) If yes, adequacy of footway/footpath
 - (c) If yes, number of type of crossing points
 - (d) If no, see flow chart 'No Footway/Footpath Provision'

RECORD OF ASSESSMENT

Adequacy of Footway/Footpath will be assessed by identifying:

1. Type of footway/footpath
2. Width of footway/footpath
3. Surface condition of footway/footpath
4. Lighting provision on footway/footpath

Number and type of crossing points will be identified for:

1. Road Crossings
2. Junctions
3. Accesses

Definitions

Footway/Footpath	An adequate footway/footpath is defined as one 'At least 1 meter wide, even in surface and without ruts and potholes – suitable for walking on'
Road Width	Is the width of the surface carriageway between edge lines or raised kerbs. An adequate width of road has been determined as 'A minimum of 5.5 meters of usable road surface'
Traffic Volume	The term 'Traffic Volume' applies to the two way volume of traffic on the route at the time of assessment
Step Off	The term 'Step off' refers to the facility for pedestrians to be able to step clear of the roadway onto a reasonably even and firm surface at kerb level or level with the roadway and of a minimum width of 1 meter.
Visibility	The term 'Visibility' means the distance of unobstructed vision from the driver to pedestrian when measured from the eye point of a driver (usually taken as being 1.05 meters above the road surface)

Stopping Distances:

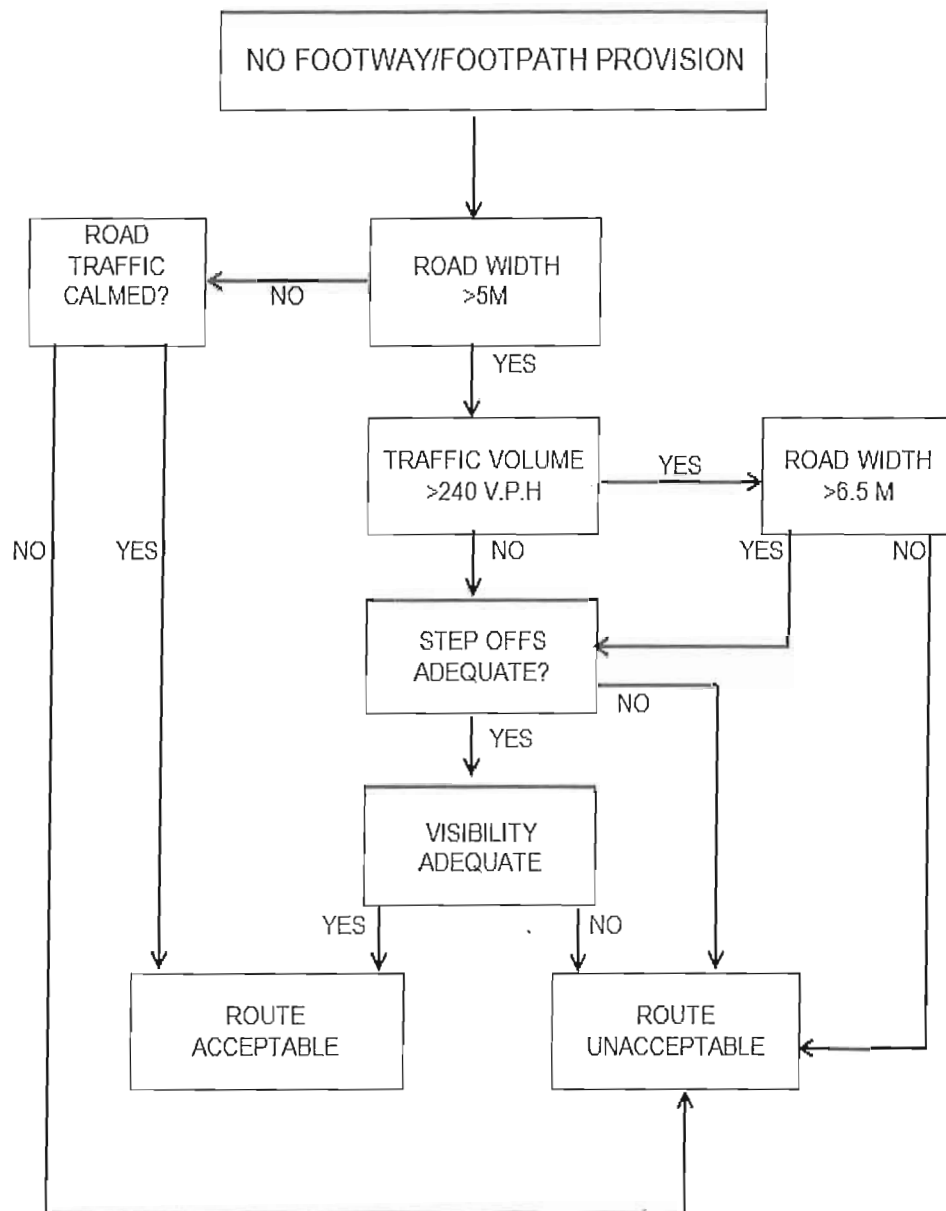
Shortest Stopping Distance in Meters

Speed (mph)	Overall Stopping Distance (m)
20	12
30	23
40	36
50	53
60	73
70	96

On a dry road, in a good car with good breaks and tyres and an alert driver.

Remember distances increase greatly with wet and slippery roads, poor brakes and tyres and tired drivers.

ASSESSMENTS OF SAFE WALKING ROUTES TO SCHOOL



IMPLICATIONS OF CHANGE OF ENTITLEMENT PROPOSAL

School	Current Entitlement	Pupils Eligible under new Entitlement	Lost Entitlement
CUMBERNAULD / KILSYTH			
Our Lady's High School, Cumbernauld	565	381	184
St Maurice's High School	399	346	53
Cumbernauld Academy	206	102	104
Greenfaulds High School	359	81	278
Kilsyth Academy	41	41	0
Chryston High School	308	26	282
AIRDRIE			
Airdrie Academy	224	194	30
Caldervale High School	427	291	136
St Margaret's High School	385	172	213
MOTHERWELL			
Braidhurst High School	137	108	29
Brannock High School	11	11	0
Our Lady's High School, Motherwell	243	3	240
Taylor High School	138	110	28
WISHAW / SHOTTS			
Calderhead High School	174	174	0
St Aidan's High School	357	187	170
Clyde Valley High School	287	168	119
Coltness High School	53	53	0
COATBRIDGE			
Coatbridge High School	425	77	348
St Andrews High School	282	196	86
St Ambrose High School	137	35	102
BELLSHILL / UDDINGSTON			
Cardinal Newman High School	110	0	110
Holy Cross High School	67	67	0
Uddingston Grammar	160	2	158
OTHER			
Lenzie Academy	13	13	0
TOTAL	5,508	2,838	2,670

*Please note the entitled number of pupils affected by the proposal are estimated. The final level of saving sum will be determined by the safety assessment of walking routes.



Consultation response form

Please use this form to let us know what you think about this proposal

Return the form to: **Secondary School Transport Consultation**
Education, Youth & Communities
Kildonan Street, Coatbridge, ML5 3BT

The closing date for responses is 9 January 2018

Proposal

The Council is currently consulting on a proposal to increase the qualification for entitlement to free mainstream school transport to secondary school pupils from more than 2 miles from their residence to their catchment school to more than 3 miles from their residence to their catchment school.

It should be noted that this proposal excludes pupils with additional support needs

In relation to this proposal it would be a parents/guardians responsibility to get their child to secondary school where they live less than 3 miles from their school. The only exception to this would be where a walking route was deemed to be unsafe in accordance with the Council's criteria on safe walking routes to schools.

The Council's criteria for assessing safe walking routes are based on the child being accompanied by a responsible adult.

North Lanarkshire Council is seeking views on the following proposal, namely:

To increase the qualification of entitlement to free secondary school mainstream transport to pupils residing more than 3 miles from their catchment school.

Q1. In order to validate your response to this proposal please provide your details:

Name

Address

Q2. Please state which secondary school your response relates to:

Q3. Do you agree with the proposal set out above? Yes ☐ No ☐ Undecided ☐

Q4. If you do not agree with the proposal or are undecided can you say what concern(s) you have (select all that apply)?:

- ☐ Childcare arrangements
- ☐ Concern over the availability of safe walking routes for my child/me
- ☐ Lack of alternative transport modes for my child/me
- ☐ Impact on local communities around the school
- ☐ The proposal would mean that my child/I, who is/am currently at primary school, would not be able to attend a denominational secondary school
- ☐ The proposal would mean that my child/I would no longer be able to attend their/my current denominational school
- ☐ Other reason (please specify below)

Please specify 'Other' reasons in the box below

Q5. If you wish to comment on the proposal or suggest an alternative option for consultation please use the space below to do so:

Q6. I am responding in my capacity as a *(please indicate by selecting the appropriate answer)*

- | | | | |
|---|--------------------------|-------------------------------------|--------------------------|
| Parent/carer of child at Primary school | <input type="checkbox"/> | Trade Union | <input type="checkbox"/> |
| Pupil of a Primary School | <input type="checkbox"/> | Elected Representative | <input type="checkbox"/> |
| Pupil of a Secondary School | <input type="checkbox"/> | Member of staff at Secondary School | <input type="checkbox"/> |
| Parent/carer of child in Secondary School | <input type="checkbox"/> | Member of Community Council | <input type="checkbox"/> |
| Parent Council of Secondary School | <input type="checkbox"/> | Member of the public / community | <input type="checkbox"/> |

Parent Council of Primary School	<input type="checkbox"/>	Other group (please specify)
Parent Teacher Association of a Primary School	<input type="checkbox"/>	<div></div>
Parent Teacher Association of a Secondary School	<input type="checkbox"/>	
Church representative	<input type="checkbox"/>	

Thank you for taking the time to respond.

Handling your response – please note that:

We will use the information you provide for the purpose(s) of this consultation, including statistical and analytical purposes;

We will pass a full copy of your written response to Education Scotland or a summary of it if agreed with them; and

We are subject to the provisions of the Freedom of Information (Scotland) Act 2002 and therefore would have to consider any request made under that Act for information relating to written responses/records of oral representations made to us relating to this consultation.

