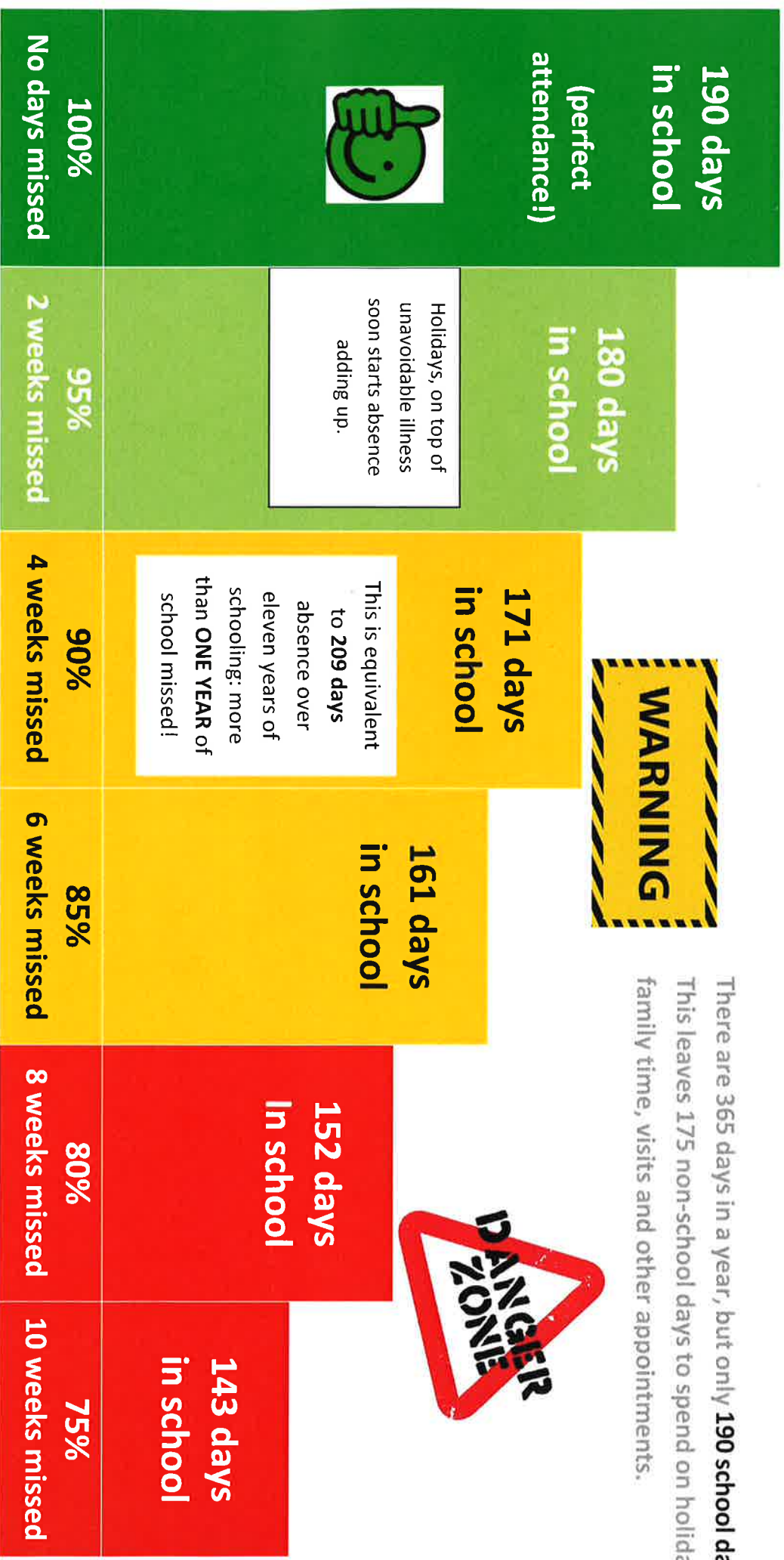


# Understanding your child's attendance percentage

There are 365 days in a year, but only **190 school days**. This leaves 175 non-school days to spend on holidays, family time, visits and other appointments.



This level of attendance gives your child the **best possible chance** of making good progress and having success in their learning

This level of attendance is **worrying**. It will make it harder for your child to make good progress and they are less likely to have success in their learning

This level of attendance is **extremely concerning**. It will be very difficult for your child to make good progress in their learning and there is likely to be a serious impact on their success in school



**ATTENDANCE MATTERS... every school day counts!**