



# VISION, VALUES & AIMS



**‘Successful Pupils Shine’**

EST. AUGUST 2024

“Shawhead Primary and Nursery Class is a welcoming, nurturing, and inclusive community where every child is supported to succeed. We believe that with the right encouragement and opportunities, ‘Successful Pupils Shine’ - in learning, in life, and as part of our family.”

## WE ARE ONE FAMILY

Our warm and welcoming ethos creates a safe, inclusive, and nurturing environment where all children and staff show values of developing a positive mindset, showing respect, and kindness within our community.



## WE VALUE AND PROMOTE PARTNERSHIPS



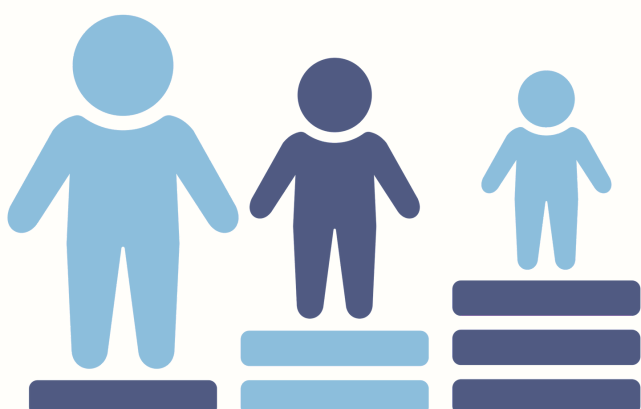
Staff and partner agencies work together as one team to ensure positive outcomes and experiences for our learners. Parents and carers are supported to be actively engaged in their children’s learning, attainment, and achievement.

## WE LEARN TOGETHER

Through a refreshed curriculum which is inclusive, tolerant and engaging, children and staff aim high, by being supported, challenged, motivated and communicating their ideas. Children develop resilience by learning from their mistakes, talking about their learning and know where they are going next.



## WE AIM TO CLOSE THE GAP AND ENSURE EQUITY FOR ALL



As a team, we work together to improve attainment and outcomes for all of our learners. Children are supported in their wider achievements and have opportunities to take on leadership roles which are shared and celebrated with our community.