

# MOVING ON

*from nursery to primary school*

*Creating a Purposeful Transition*

---





# LET'S WORK TOGETHER!

Let's introduce our Shotts Transition Cluster Group

## Our shared aims

- *To listen and respond to the needs of children, parents and carers*
- *To work together to plan, organise and deliver a shared, positive experience of nursery to primary transition for children, parents and carers*
- *To strengthen community links*

# PLANNING FOR TRANSITION

Why is a *good* transition important for *your* child?

- confidence building
- broadening horizons
- working together
- forming relationships
- family involvement
- helping the children develop both emotionally and socially.
- meaningful and challenging learning experiences

*‘a good transition can strongly influence a child’s future progress’*





# CURRICULUM FOR EXCELLENCE

successful learners > confident individuals > responsible citizens > effective contributors

*What impact has Curriculum for Excellence had on transition from pre-school to primary?*

a bigger focus on transition and its importance



staff in nursery and primary working together to deliver the early level curriculum

a very strong message about 3-18 being a continuum

building relationships between children, parents and staff.



school



active learning approaches and learning through play



# FROM NURSERY TO PRIMARY

How different will it be for my child?

## ACTIVE LEARNING VIDEO

Not as different as you think!

*Why are school and nursery visits for staff and children so important?*

### Benefits for the children visiting school

- getting to know their school environment
- getting to know their teachers and other staff in school
- learning alongside primary one children
- feeling school is a safe and familiar place



**A HAPPY START!**

### Benefits for school and nursery staff

- teachers will get to know the children, by talking to them in a familiar environment
- greater knowledge of the children's preferred learning style
- sharing previous learning
- opportunities to plan and work collaboratively

### Benefits for all of us

- children who are happy and eager to go to school
- staff who know your child well
- uninterrupted learning



# CALENDAR OF EVENTS

Here are some of the main events planned.



In School - My New School/Snack in Cafeteria

In School - Health and Wellbeing

In School - Maths Across Learning

In School - Literacy Across Learning

In School - Class Visit/Parent Visit

In Nursery - Buddy Play Day



These events may vary a little, from school to school.  
Your child's primary school will keep you informed.



**and throughout the year:**

- regular crossover visits between nursery and school,
- invitations to school events and shared learning
- parent/carer consultation

# GIRFEC

## Getting It Right For Every Child

a shared understanding of wellbeing

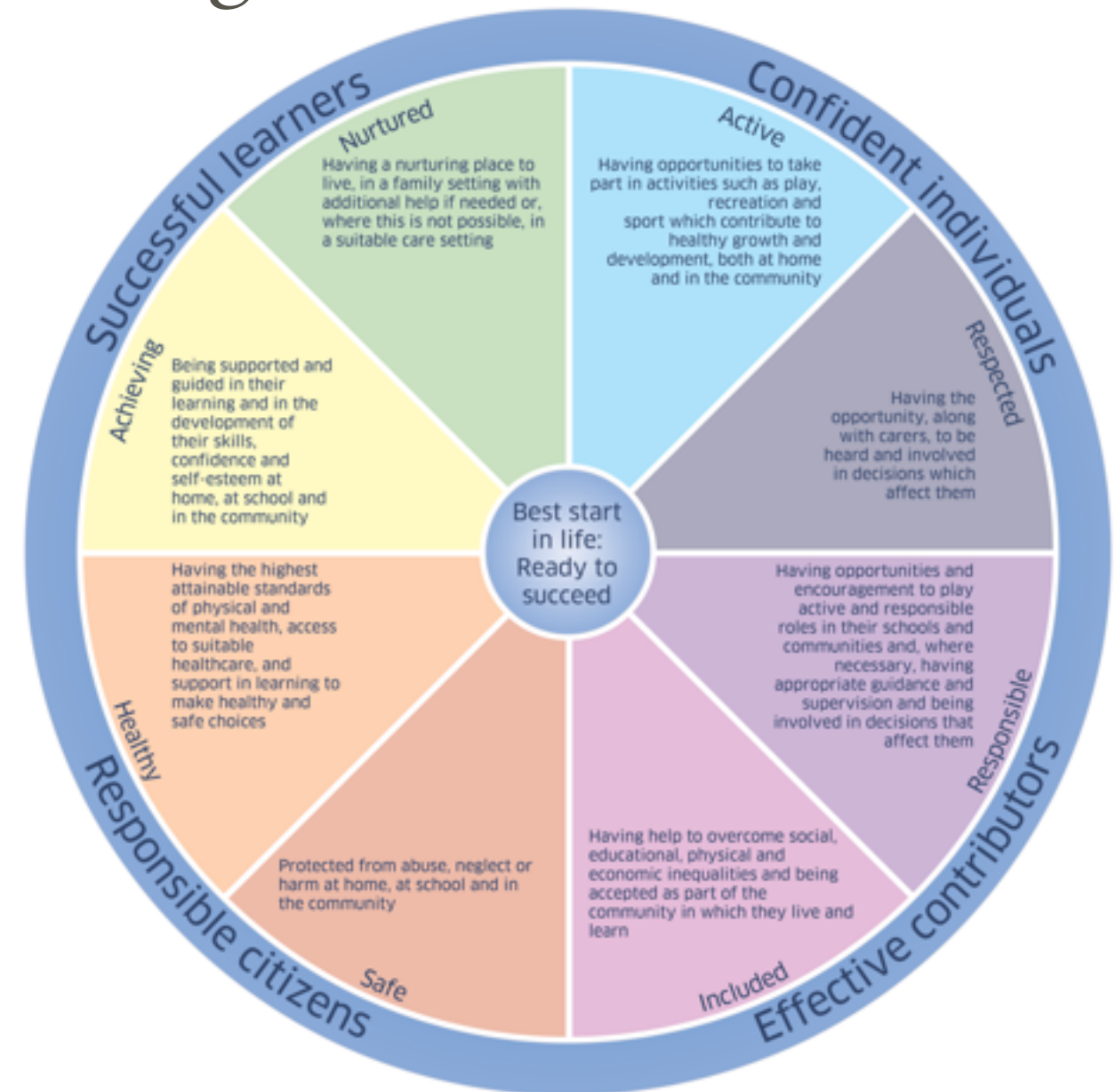
# SHANARRI

the child at the centre

building solutions

working together

appropriate support



a *Named Person* for every child



# THE NAMED PERSON

pre birth and up to 14 days after

Midwife

up to starting school

Health Visitor

at school

Headteacher or Depute Head

## The Role of the Named Person

Most children and young people get all the help and support they need from:

Teachers

Family

Health Professionals

Early Learning Practitioners

Wider Community

Where extra help is needed that's where the Named Person comes in.

Their job is to:

listen

respect



be a point of contact



to promote, support and safeguard a child's development and wellbeing



# FOR PARENTS/CARERS

## Our Questionnaire

What else can we do to help?

What do you want these visits to achieve?

What are your worries or concerns?

### Stalls

Find out about services to support you and your child



### Coffee or Tea?



And finally, a SLIDESHOW to make you smile!

*'A Picture says a Thousand Words'*