

I got my first time:  
star CONDUCTIONS/  
CONNECTIVES

# A WHITE BUS Writing - Persuasive POINT OF VIEW

We use different types of assessment. We use a different kind each week.  
Miss G + Miss P decide which targets should be used.

I went from 2.1 to 2.3.  
2.1 is where you should be at the end of P5.  
2.2 is P6  
2.3 is end of P7.

## LANGUAGE

Persuasive Writing 2.1	Persuasive Writing 2.2	Persuasive Writing 2.3
<p><b>Core Targets</b></p> <ul style="list-style-type: none"> <li>✓ Punctuation</li> <li>✓ Spelling</li> <li>✓ Sentence length</li> <li>✓ Paragraphs</li> <li>✓ Main work</li> <li>✓ Connectives</li> </ul> <p><b>Genre Targets</b></p> <ul style="list-style-type: none"> <li>✓ Correct layout and arrangement of information</li> <li>✓ Opening paragraph clearly including the main message</li> <li>✓ More than 4 paragraphs explaining my point of view</li> <li>✓ Evidence to support my point of view</li> <li>✓ Use strong persuasive language to convince the reader</li> <li>✓ Use complex connectives (however, although, on the other hand)</li> <li>✓ Conclusion that reiterates and summarises my point of view</li> <li>✓ Graphics with captions if needed</li> </ul> <p>Self-assessed    Peer-assessed    Teacher-assessed</p>	<p><b>Core Targets</b></p> <ul style="list-style-type: none"> <li>✓ Punctuation</li> <li>✓ Spelling</li> <li>✓ Sentence length</li> <li>✓ Paragraphs</li> <li>✓ Main work</li> <li>✓ Connectives</li> </ul> <p><b>Genre Targets</b></p> <ul style="list-style-type: none"> <li>✓ Correct layout</li> <li>✓ Opening paragraph including the main message</li> <li>✓ 3 paragraphs explaining my point of view</li> <li>✓ Evidence to support my point of view</li> <li>✓ Use persuasive language to convince the reader</li> <li>✓ Conclusion that summarises my point of view</li> <li>✓ Punctuation if needed</li> </ul> <p>Self-assessed    Peer-assessed    Teacher-assessed</p>	<p><b>Core Targets</b></p> <ul style="list-style-type: none"> <li>✓ Punctuation</li> <li>✓ Spelling</li> <li>✓ Sentence length</li> <li>✓ Paragraphs</li> <li>✓ Main work</li> <li>✓ Connectives</li> </ul> <p><b>Genre Targets</b></p> <ul style="list-style-type: none"> <li>✓ Correct layout and arrangement of information</li> <li>✓ Opening paragraph clearly including the main message</li> <li>✓ More than 4 paragraphs explaining my point of view</li> <li>✓ Evidence to support my point of view</li> <li>✓ Use strong persuasive language to convince the reader</li> <li>✓ Use complex connectives (however, although, on the other hand)</li> <li>✓ Conclusion that reiterates and summarises my point of view</li> <li>✓ Graphics with captions if needed</li> </ul> <p>Self-assessed    Peer-assessed    Teacher-assessed</p>

Core targets never change you need to have these in all.



Our last piece of writing was on fast fashion. We watched a documentary so we could write down notes to help us plan for our writing. Only 30% of imported fashion gets used.

Fast fashion leads to floods.

Persuasive Writing 2.3
<p><b>Core Targets</b></p> <ul style="list-style-type: none"> <li>✓ Punctuation</li> <li>✓ Spelling</li> <li>✓ Sentence length</li> <li>✓ Paragraphs</li> <li>✓ Main work</li> <li>✓ Connectives</li> </ul> <p><b>Genre Targets</b></p> <ul style="list-style-type: none"> <li>✓ Correct layout and arrangement of information</li> <li>✓ Opening paragraph clearly including the main message</li> <li>✓ More than 4 paragraphs explaining my point of view</li> <li>✓ Evidence to support my point of view</li> <li>✓ Use strong persuasive language to convince the reader</li> <li>✓ Use complex connectives (however, although, on the other hand)</li> <li>✓ Conclusion that reiterates and summarises my point of view</li> <li>✓ Graphics with captions if needed</li> </ul> <p>Self-assessed    Peer-assessed    Teacher-assessed</p>

You have to remember the genre targets so you know what to include.



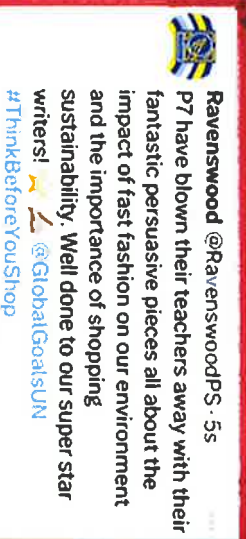
I use them to help me improve if a target doesn't have a green star I know to put that in next time. "Think before you buy!"

Persuasive Writing 2.3
<p><b>Core Targets</b></p> <ul style="list-style-type: none"> <li>✓ Punctuation</li> <li>✓ Spelling</li> <li>✓ Sentence length</li> <li>✓ Paragraphs</li> <li>✓ Main work</li> <li>✓ Connectives</li> </ul> <p><b>Genre Targets</b></p> <ul style="list-style-type: none"> <li>✓ Correct layout and arrangement of information</li> <li>✓ Opening paragraph clearly including the main message</li> <li>✓ More than 4 paragraphs explaining my point of view</li> <li>✓ Evidence to support my point of view</li> <li>✓ Use strong persuasive language to convince the reader</li> <li>✓ Use complex connectives (however, although, on the other hand)</li> <li>✓ Conclusion that reiterates and summarises my point of view</li> <li>✓ Graphics with captions if needed</li> </ul> <p>Self-assessed    Peer-assessed    Teacher-assessed</p>

It's important not to just copy things from Google. You have to put things into your own words. When I go to do my next piece I always read the piece before so I know how to improve.

After you have done your writing you highlight green means you have included a target, pink means you need to think about this for next time.

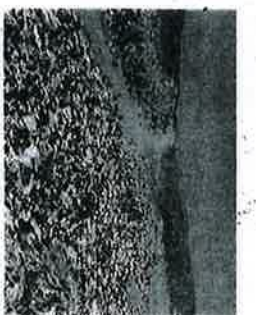
For peer assessing we discuss our writing and targets with our shoulder partner.



Ravenswood @RavenswoodPS-55 P7 have blown their teachers away with their fantastic persuasive pieces all about the impact of fast fashion on our environment and the importance of shopping sustainability. Well done to our super star writers! @GlobalGoalsUN #ThinkBeforeYouShop

I prefer peer assessment because they can give me new ideas on how to improve.

I use Word Documents to do my writing. I find it 100% easier because I don't need to worry about my handwriting or spelling.



**6.10.23 Fast Fashion**  
Fast fashion is the term to describe clothing designs that move quickly from the stores to take advantage of trends. The collections are often based on styles presented at Fashion Week runway shows or worn by celebrities.  
Fast fashion brands like Shein, H&M, or Temu make clothes cheap to buy but due to the poor quality they do not last long. Items end up as rubbish and are not sustainable. This is a huge problem for our environment that we must stop now.  
The pressure to reduce costs and speed up production time means environmental corners are more likely to be cut. Fast fashion's negative impact includes its use of cheap, toxic textile dyes—making the fashion industry the one of the largest. We need to do this now we need your help.  
There is a big mountain full of fast fashion it is so big now and we are making it worse every day you do not want it to get bigger.

Buying sustainably means you should buy clothes that will last. You can also donate and buy on Vinted.  
PARAGRAPHS, GOOD LAYOUT  
INFORMATION/FACTS