

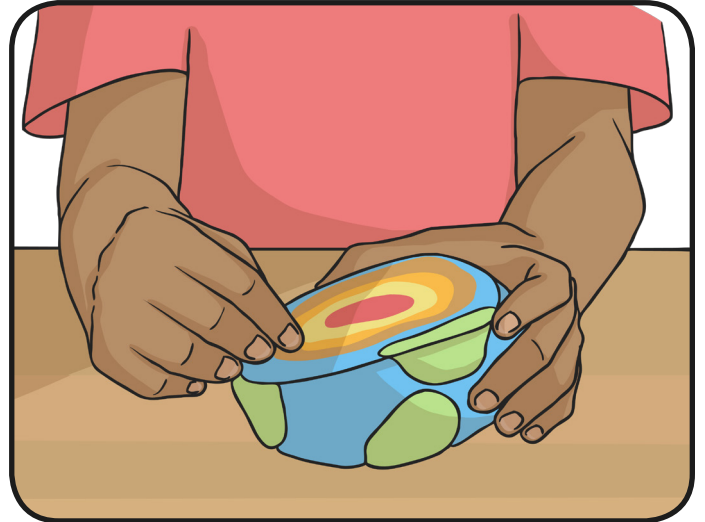
Make a Model Earth



You will need:

Modelling clay in red, yellow, orange and brown

Rolling pin



1. Make a small ball of red clay.
2. Roll out a thick yellow sheet of clay and wrap it around the red ball.
This is the outer core.
3. Repeat with a thick layer of orange clay for the mantle.
4. Roll out a thin layer of brown clay and wrap around your model Earth.
This is your crust.
5. You could add a very thin layer of blue clay to be the seas and then some very thin green, brown and white to be the land. Use a globe to help you place your land.
6. Finally, cut your Earth carefully in half to see the layers inside.