

Reading Scales



Carl

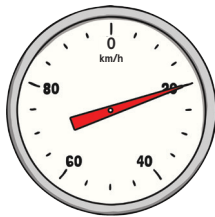


Aneesa

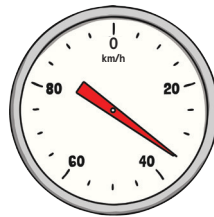


Amelia

1. Carl, Aneesa and Amelia are racing at the fair. How fast is each of them driving?



Carl

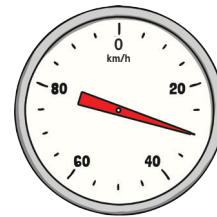
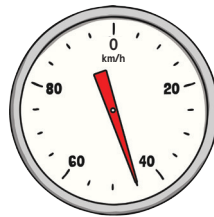
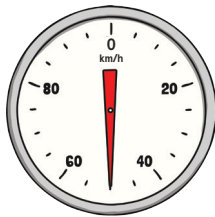


Aneesa



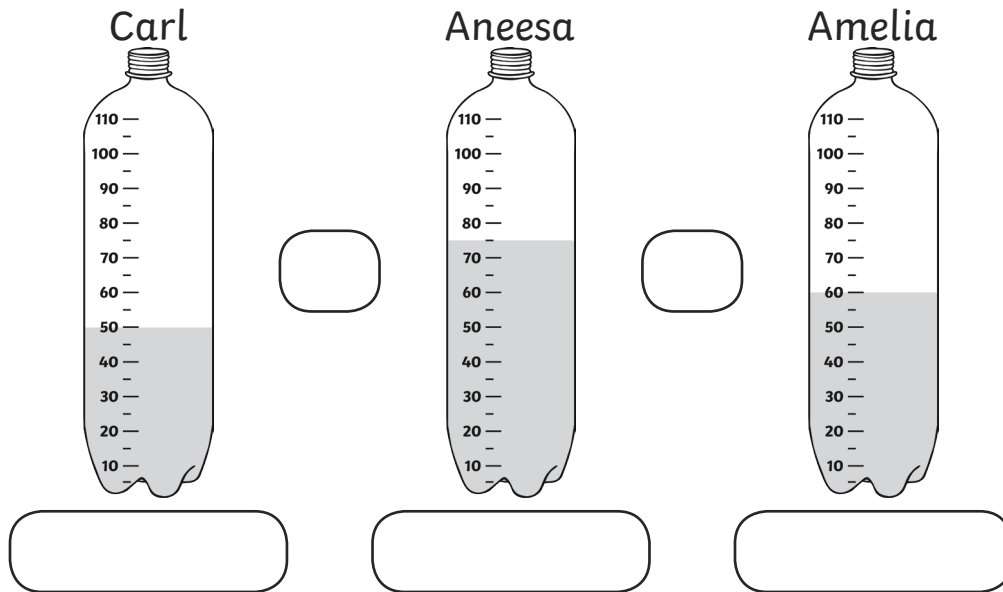
Amelia

2. Carl is driving faster than Aneesa. Amelia is driving more slowly than Aneesa. Can you match them to their speedometers?

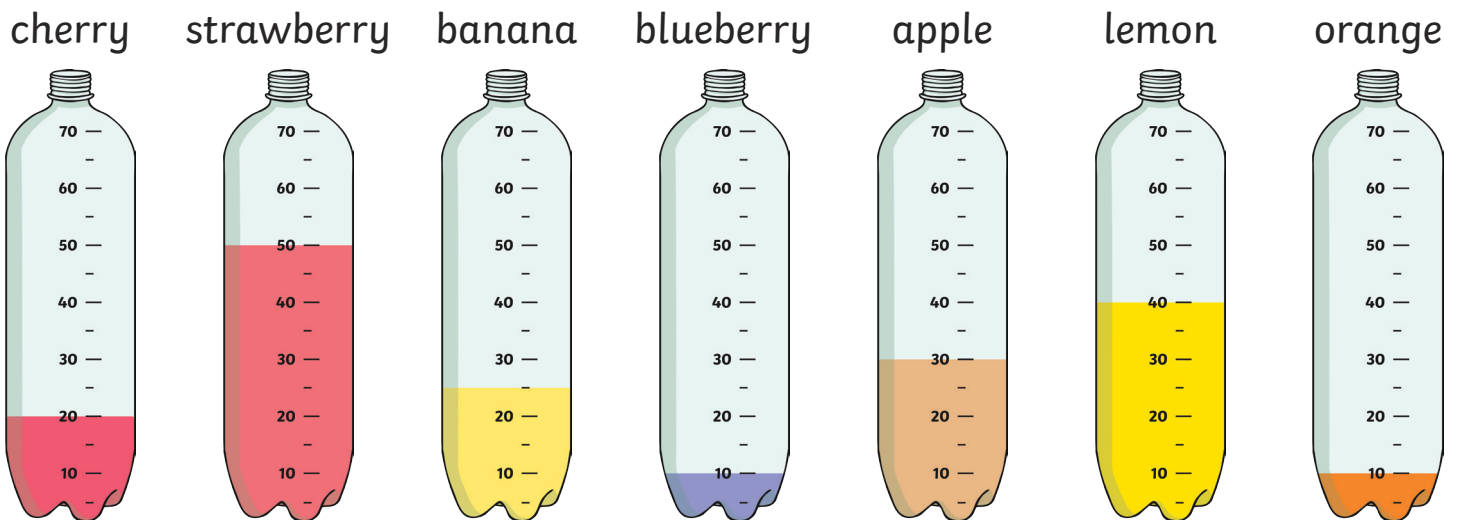


Reading Scales

3. Carl, Aneesa and Amelia stop for a drink. This is how much they each have left in their bottles. Put $<$ $>$ or $=$ between the bottles and write under each bottle how much it contains.



4. Carl, Aneesa and Amelia each have some bottles with different flavours:



They each mix together 3 different flavours to make their own fruit drink.
 Carl isn't keen on fruit so he makes the smallest possible drink.
 Aneesa loves fruit so she makes the largest possible drink.
 Amelia makes a drink that is exactly 70ml.
 Which fruits did they choose?

Carl _____

Aneesa _____

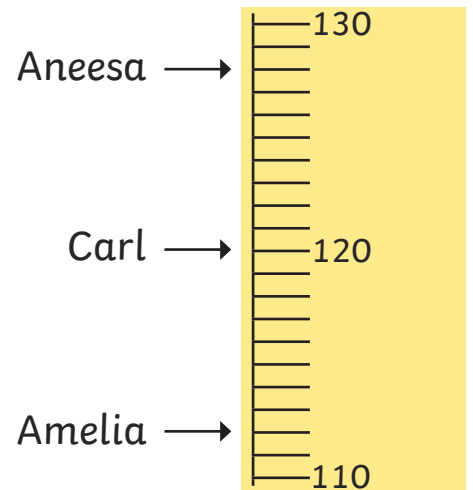
Amelia _____

Reading Scales

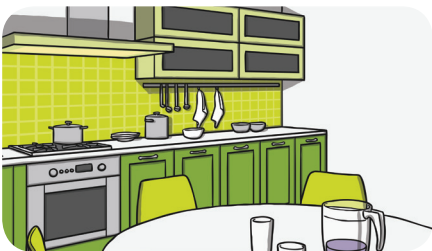
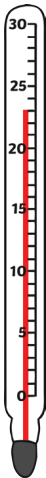
Find a different way to make Amelia's drink.

5. There is a minimum height of 120cm for the 'Mummy Attack' ride. Who is tall enough to go on the ride?

How much taller does Amelia need to be to go on the ride?

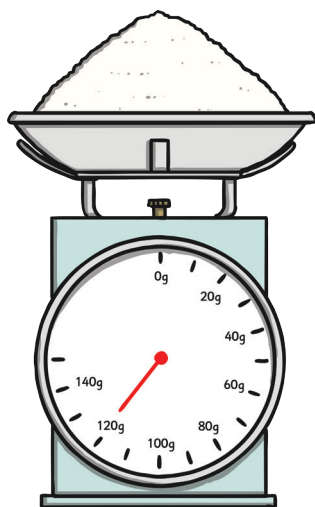


6. The children place a thermometer in 3 different rooms in the house. Write the temperatures in the rooms.

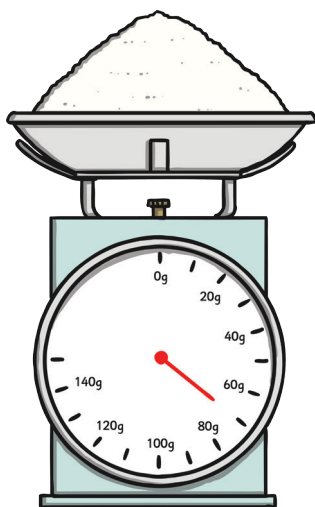


Reading Scales

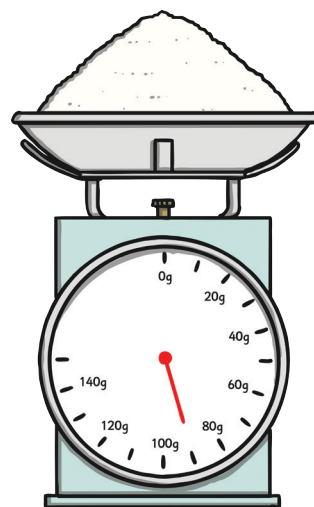
7. They decide to do some baking. What questions could you ask your friend about what you see on the scales?



Carl



Aneesa



Amelia

Reading Scales

Answers



Carl

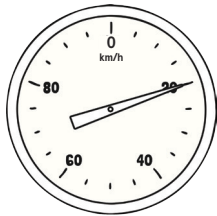


Aneesa



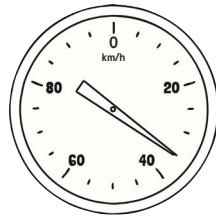
Amelia

1. Carl, Aneesa and Amelia are racing at the fair. How fast is each of them driving?



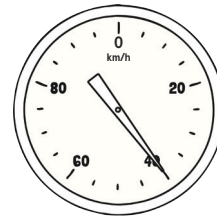
Carl

20



Aneesa

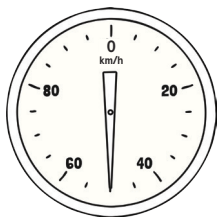
35



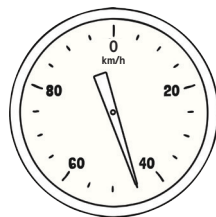
Amelia

40

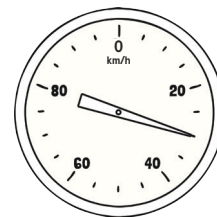
2. Carl is driving faster than Aneesa. Amelia is driving more slowly than Aneesa. Can you match them to their speedometers?



Carl



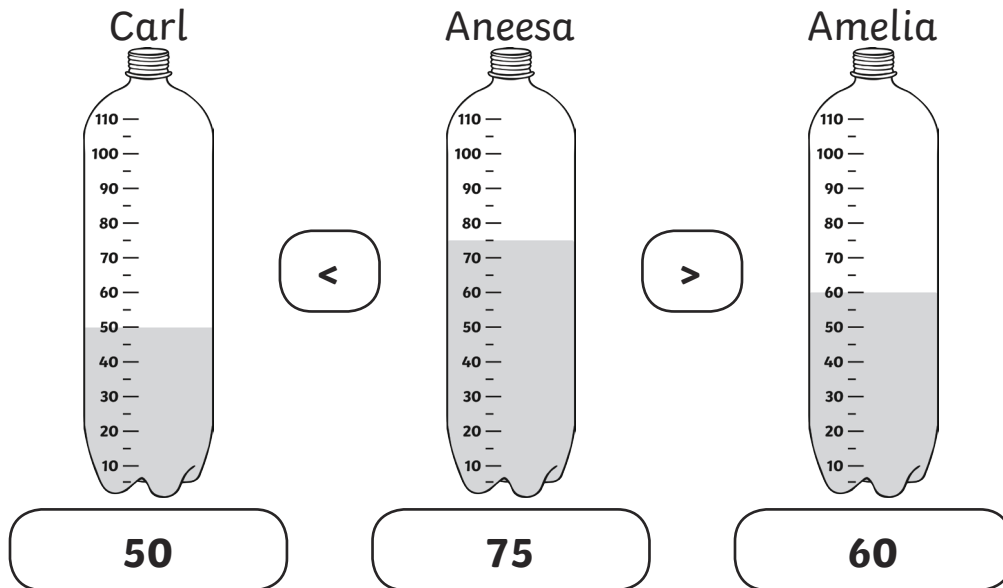
Aneesa



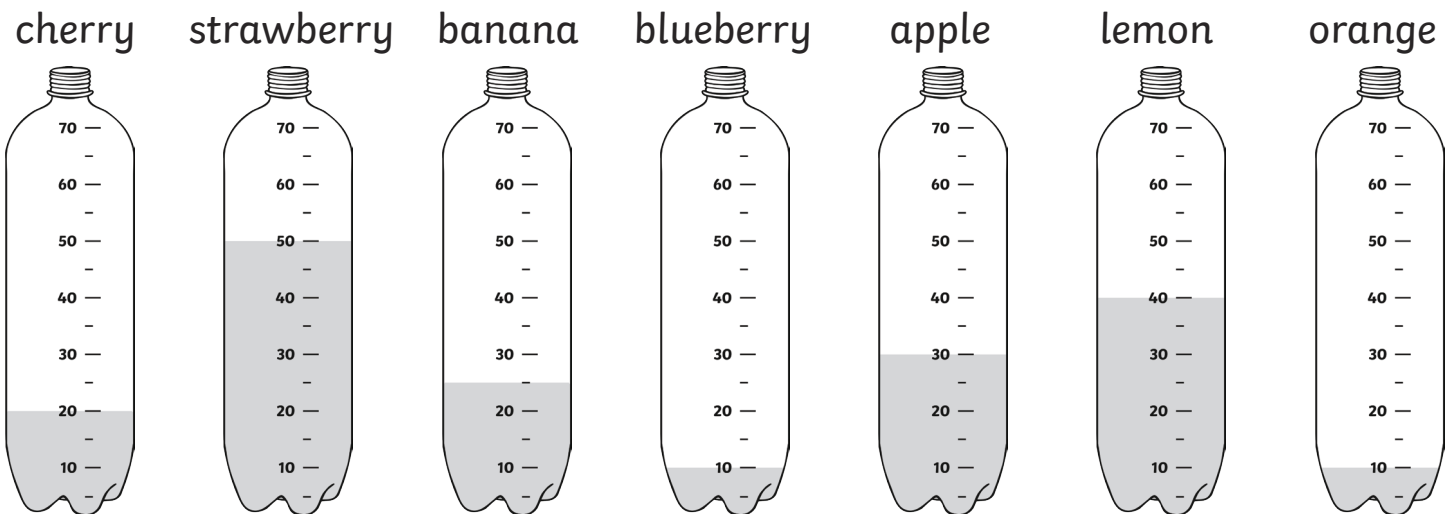
Amelia

Reading Scales Answers

3. Carl, Aneesa and Amelia stop for a drink. This is how much they each have left in their bottles. Put $<$ $>$ or $=$ between the bottles and write under each bottle how much it contains.



4. Carl, Aneesa and Amelia each have some bottles with different flavours:



They each mix together 3 different flavours to make their own fruit drink.

Carl isn't keen on fruit so he makes the smallest possible drink.

Aneesa loves fruit so she makes the largest possible drink.

Amelia makes a drink that is exactly 70ml.

Which fruits did they choose?

Carl: **cherry, blueberry and orange**

Aneesa: **strawberry, apple and lemon**

Amelia: **lemon, cherry and orange OR lemon, cherry and blueberry**

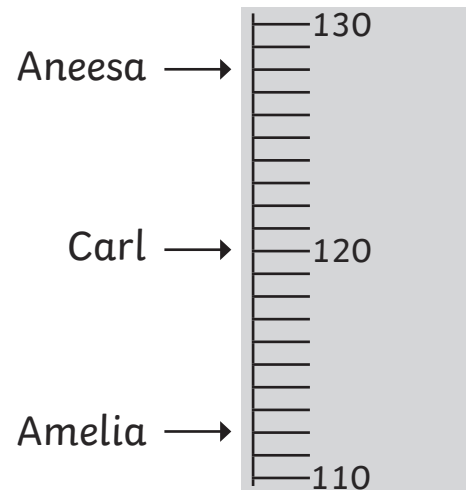
Reading Scales Answers

5. There is a minimum height of 120cm for the 'Mummy Attack' ride. Who is tall enough to go on the ride?

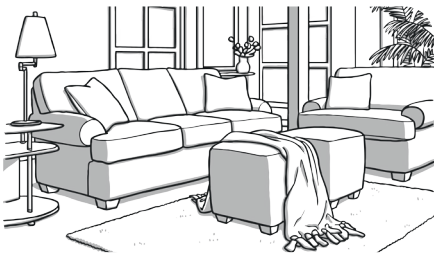
Carl and Aneesa

How much taller does Amelia need to be to go on the ride?

Amelia needs to be 8cm taller.



6. The children place a thermometer in 3 different rooms in the house. Write the temperatures in the rooms.



14°c



23°c

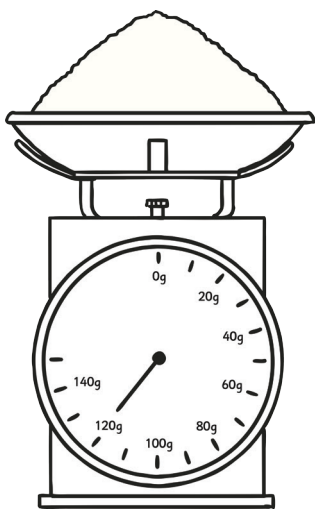


29°c

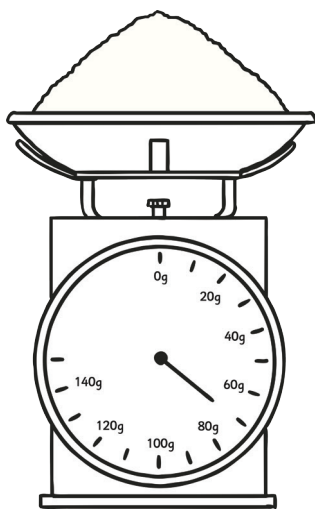


Reading Scales Answers

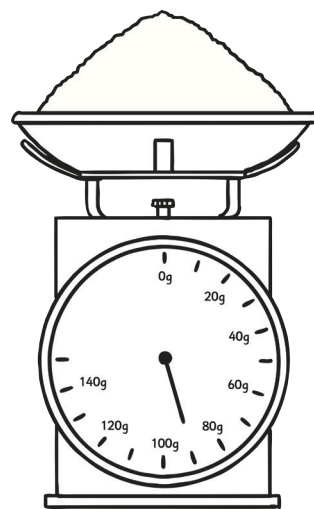
7. They decide to do some baking. What questions could you ask your friend about what you see on the scales?



Carl



Aneesa



Amelia

Child's own responses.