



Our Lady of Good Aid Cathedral Primary School & Nursery Class



Aa



$$2+2=$$



Our Curriculum

Developed March 2021; refreshed May 2023

As pictured on our Curriculum Rationale poster overleaf, OLGA Cathedral Primary School views the curriculum as an ongoing learning journey. Our curriculum should capture our young learners' interests, engage their emotions as well as their brains and encourage them down new paths where each turn in the road reveals something new and exciting to discover!



Our Lady of Good Aid
Cathedral Primary School
& Nursery Class

OUR CURRICULUM

An exciting journey of discovery and learning

CONTRIBUTING TO THE ETHOS AND LIFE OF CATHEDRAL PRIMARY

- Pupil Voice
- House Teams
- Leadership roles
- Supporting charities
- Learning showcases
- ... and more!



CURRICULUM AREAS AND SUBJECTS

Experiences & Outcomes

Progression Pathways for all areas



On the journey, Cathedral Primary pupils develop into

SUCCESSFUL LEARNERS
CONFIDENT INDIVIDUALS
RESPONSIBLE CITIZENS
EFFECTIVE CONTRIBUTORS

who are **SAFE**
HEALTHY
ACHIEVING
NURTURED
ACTIVE
RESPECTED
RESPONSIBLE
and **INCLUDED**

PERSONAL ACHIEVEMENTS

Rose Trainer Achievement Award



Each pupil's learning journey gradually becomes more challenging. However, it never feels overwhelming because pupils cultivate a **Growth Mind-set** and develop **resilience**.

The road splits every so often and pupils have opportunities to make **informed choices** about the direction they take.

DEPTH BREADTH
PROGRESSION

INTERDISCIPLINARY LEARNING
Pupils have regular opportunities to engage in learning which draws on **Experiences & Outcomes** from different curriculum areas.

CHALLENGE & ENJOYMENT

PERSONALISATION & CHOICE
COHERENCE
RELEVANCE

HIGH QUALITY LEARNING & TEACHING

Cathedral Primary curriculum has a particular emphasis on:

- ✓ the acquisition of **Literacy and Numeracy skills**;
- ✓ play pedagogy and active learning;
- ✓ developing an active, healthy lifestyle;
- ✓ creativity & the performing arts



OUTDOOR LEARNING

The latest **Digital Technology** supports pupils' learning across the curriculum.

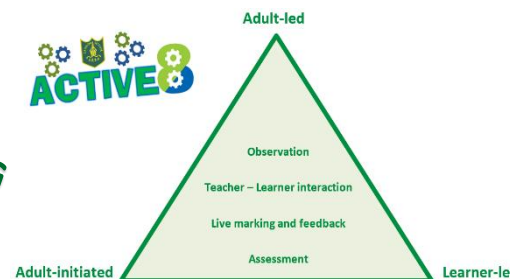
Through a range of **assessment activities**, Cathedral Primary pupils gather snap-shots of their learning (Milestone Moments) all along their learning journey. This provides evidence of the different things they can **Say, Make, Write** and **Do** at various points in time. Pupils have regular opportunities to talk to their teacher and an adult at home about their progress and the next steps in their learning.



During their time in Cathedral Primary, pupils develop into **LIFELONG LEARNERS** and move on after P7 to continue on their own unique learning journeys. **THEY NEVER STOP LEARNING BECAUSE LIFE NEVER STOPS HAVING NEW THINGS TO TEACH THEM!**

DYW

CATHEDRAL
Developing the
Young Workforce



OLGA CATHEDRAL PS
CURRICULUM TAKES PUPILS ON AN EXCITING LEARNING JOURNEY WHERE EACH TURN IN THE ROAD REVEALS SOMETHING NEW TO EXPERIENCE AND LEARN!

There's LOTS to see and experience on the journey. The different **Areas of the Curriculum** and **Essential Experiences** spark pupils' interest and imagination and give them the opportunity to gain and develop new **knowledge, skills** and **attributes** for learning, life and work.

Pupils do not make this journey alone. They learn together with others – *in school, at home and in the wider community* – and always get the right sort of help and support along the way, especially at times of change and transition.



SETTING THE SCENE

OLGA Cathedral Primary School has been a much loved centre of learning throughout its long history, supporting the development of successful learners, confident individuals, responsible citizens, effective contributors and faithful disciples for fifteen decades. Our school community actively acknowledges and cherishes this legacy and recognises that, no matter how our curriculum develops and changes over time, we are continually building on the foundations laid by previous dedicated members of the Cathedral Primary family.

“A good school provides a rounded education for the whole person. And a good Catholic school, over and above this, should help all its students to become saints.”

(Pope Benedict XVI)

As a Catholic school, faith is the bedrock of OLGA Cathedral Primary and we endeavour to place Christ and Our Lady at the centre of everything we do. Following in the footsteps of those who have gone before us, Cathedral Primary is wholeheartedly committed to working in partnership with pupils, parents, partners, the parish and the wider community to ensure we provide the highest quality of education across all curricular areas, with the needs of the whole child – spiritual, emotional, social, physical and academic – being recognised, nurtured and developed.

Graeme Young

(Head Teacher)

OUR VISION, VALUES AND AIMS



VISION

Placing Christ and Our Lady at the centre, and with children at the heart of everything we do, our vision is to continually grow into a strong community of faith and learning in which every child and adult feels happy, safe, loved, included, proud and listened to, with every opportunity to reach their full God-given potential.

VALUES

Love, Connection, Perseverance, Growth

AIMS

Our Lady of Good Aid Cathedral Primary School aims to:

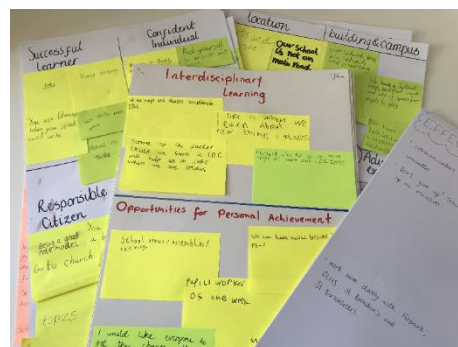
- recognise every child and adult as a unique individual, made in the image of God, and continually endeavour to meet the spiritual, emotional, physical, social and academic needs of all
- establish and maintain high, but realistic, standards and expectations for all, fostering a love of learning in both pupils and adults and supporting everyone within our school community to be a confident individual who takes responsibility for their own learning
- provide the highest quality of learning and teaching across the curriculum, supporting all pupils to be literate, numerate and healthy, equipped with the knowledge, skills and attributes necessary for being successful lifelong learners in an ever-changing society
- provide meaningful opportunities for pupils to develop their knowledge and understanding of the Catholic faith, participate meaningfully in religious observance and actively live out their faith as responsible citizens and effective contributors within Our Lady of Good Aid Cathedral Primary School and in the local and global community

Our Vision, Values and Aims form the foundation of our entire curriculum. We reflect on them regularly and our 'values stickers' encourage pupils and adults to apply them in their day-to-day life and work.

WHAT MAKES OLGA CATHEDRAL PRIMARY SCHOOL SPECIAL AND UNIQUE?

At the outset of refreshing our curriculum in March 2021, our school community reflected on what makes OLGA Cathedral Primary special and unique. We organised our thoughts under four headings: *'The pupils and families which make up our school'*, *'The location of our school'*, *'Our school building and grounds'* and *'The expertise amongst school staff and other adults in our parish/local community'*.

So, what do the members of our school community think makes OLGA Cathedral Primary School special and unique?



The pupils and families which make up our school

- ✓ OLGA Cathedral pupils are extremely well-behaved, well-mannered, kind and helpful.
- ✓ We are very proud of our school and have always been known for our smart uniform.
- ✓ Pupils and adults always try to work as a team to make OLGA Cathedral Primary the best school it can be.
- ✓ Our Catholic identity is vitally important to us, but we welcome pupils and families of all faiths and none.
- ✓ Our diversity helps us learn about and respect different cultures, faiths and languages.
- ✓ Everybody in Cathedral Primary has a voice and are given regular opportunities to contribute to decision making.
- ✓ We have a very active and supportive Parent Council who raises money to support and enhance our learning.

The location of our school

- ✓ Our campus is adjacent to woodland areas which we can use for outdoor learning.
- ✓ We are within walking distance of Motherwell town centre, giving us easy access to local facilities and attractions as well as opportunities to connect with local businesses.
- ✓ We can get to Strathclyde Country Park easily.
- ✓ We are only ten minutes' walk from Motherwell railway station, giving us easy access to Glasgow, Edinburgh and other parts of Lanarkshire.
- ✓ We are close to Carfin Grotto, giving us further opportunities to nourish and grow in our Catholic faith.

Our school building and grounds

- ✓ We share our campus with Firpark and Clydevew Primary Schools, and Cathedral Nursery is also located within our building. This gives us lots of opportunities to work and learn together (CA-FI Connections).
- ✓ We have large school grounds for everyone to enjoy including a football pitch, basketball court, climbing wall, trim-trail, outdoor classroom and amphitheatre.
- ✓ We have large 'learning streets' outside our classrooms which offer additional space to enjoy and extend our learning.

The expertise amongst school staff and other adults in our parish/local community

- ✓ We are an important part of the Cathedral parish community and the clergy are regular visitors to the school. They help us grow in our faith.
- ✓ Cathedral Primary staff have lots of different interests, skills and talents and pupils benefit from a wide variety of extra-curricular activities.
- ✓ We have a volunteer called Willie who runs 'Friday Football'.
- ✓ OLGA Cathedral parents, carers and friends of the school work in a wide variety of professions and have lots of different skills and talents; they're always willing to give of their time to support and enhance our pupils' learning.

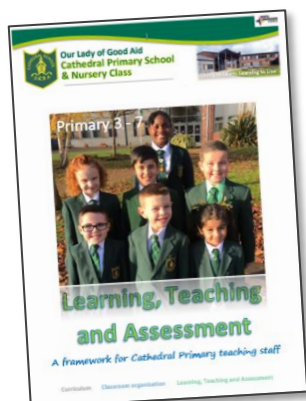
The unique context of OLGA Cathedral Primary School is reflected in both the design and the content of our curriculum. Our curriculum is summarised on our **Curriculum Rationale poster** and **Curriculum Overview**.

THE ENTITLEMENTS OF OLGA CATHEDRAL PRIMARY SCHOOL PUPILS

OLGA Cathedral Primary School honours the life, dignity and voice of each person, made in the image of God, and is committed to being an inclusive community where all pupils feel welcome, valued, included and have the best possible opportunities to reach their full potential. **Each and every one of our pupils has the right to enjoy coming to school and to develop a lifelong love of learning.** All OLGA Cathedral Primary School pupils are entitled to:

- an exciting, engaging and highly relevant *Broad General Education* which includes all Curriculum for Excellence Experiences & Outcomes across all curricular areas;
- benefit from the various Cathedral 'Essential Experiences' outlined in our Curriculum Overview;
- high quality learning and teaching and access to the very best resources across all curricular areas;
- smooth and well-paced progression through all areas of the curriculum;
- experience both challenge and success and be given the right sort of support on their learning journey;
- develop transferable life skills so that they are equipped with the skills necessary to flourish in their future lives and careers;
- explore, develop and grow in their Catholic faith (or, for non-Catholic pupils, be affirmed in their own faith or values);
- support to adopt a healthy lifestyle so that they are safe, healthy, achieving, nurtured, active, respected, responsible and included;
- support to develop well-informed views and a strong sense of responsibility for themselves and others

LEARNING, TEACHING AND ASSESSMENT



All OLGA Cathedral Primary School staff and pupils have a shared understanding of what effective learning and teaching looks like and this is outlined in our *Learning, Teaching and Assessment Framework*.

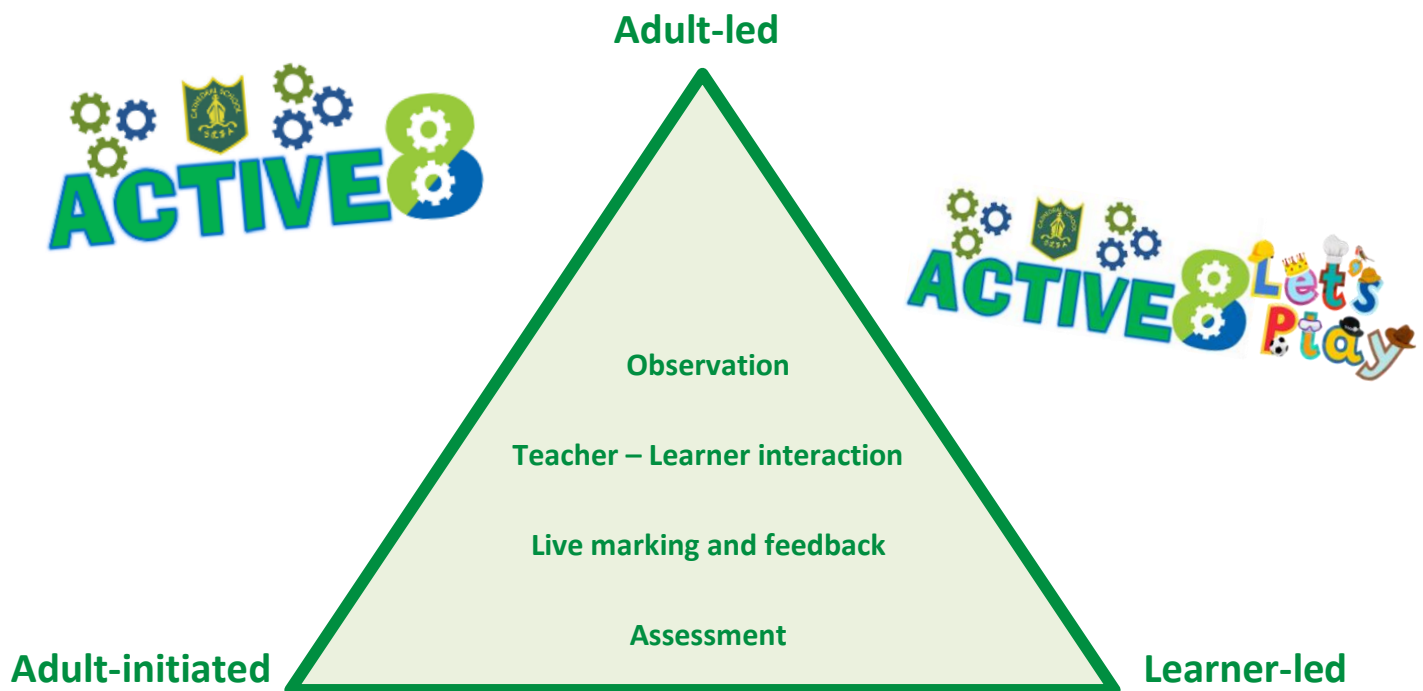
As pictured on our Curriculum Rationale poster, OLGA Cathedral Primary School views the curriculum as an ongoing learning journey. Our curriculum should capture our young learners' interests, engage their emotions as well as their brains and encourage them down new paths where each turn in the road reveals something new and exciting to discover. Learning is often unpredictable and we encourage our pupils to recognise that it requires effort, commitment and self-direction. **Our ultimate goal is for all OLGA Cathedral Primary pupils to grow into lifelong learners.**

OLGA Cathedral Primary School's **Active8** approach provides a daily structure for the delivery of our curriculum. **Active8** seeks to develop confident, independent and responsible learners who benefit from genuine personalisation and choice in their learning whilst still receiving their full entitlement to a Broad General Education across all curriculum, delivered in creative and innovative ways.



The overarching pedagogy across OLGA Cathedral Primary School and Nursery Class draws on the work of Julie Fisher (2016) and exploits all three of the main ways in which children learn:

- **ADULT-LED LEARNING: teachers focus children's thinking**
The adult has planned objectives/outcomes and stays with children whilst learning takes place.
- **ADULT-INITIATED LEARNING: teachers fathom/ignite children's thinking**
The adult sets up a starting point, invitation, provocation or stimulus with planned intentions and then stands back to wait, watch and wonder. Children engage independently until the adult joins to observe, interact or enhance learning.
- **LEARNER-LED LEARNING: teachers follow children's thinking**
Resources, experiences and outcomes are freely chosen by the child and are under the control of the child. This may or may not involve direct interaction with the adult



There is no contest between child-led and adult led learning. It is the one without the other that gives children an impoverished educational experience.

(Fisher, as cited in 'Interacting or Interfering', 2016)



THE FOUR CAPACITIES

Our curriculum aims to ensure that each and every OLGA Cathedral pupil develops the **knowledge, skills** and **attributes** they will need to flourish in **life, learning** and **work**, now and in the future. The purpose of our curriculum is encapsulated in the Four Capacities: to enable each child to be a **SUCCESSFUL LEARNER**, a **CONFIDENT INDIVIDUAL**, a **RESPONSIBLE CITIZEN** and an **EFFECTIVE CONTRIBUTOR**. The attributes and capabilities of the Four Capacities are outlined below:



PRINCIPLES OF CURRICULUM DESIGN

The **Seven Design Principles** underpin the OLGA Cathedral Primary School curriculum and also lie at the heart of our **Active8** approach:

PROGRESSION

The school's skills progressions help ensure that learning experiences within our **Active8** approach continually build on pupils' existing knowledge, skills and achievements. The approach allows all learners to progress at a rate which meets their needs and aptitudes.

CHALLENGE AND ENJOYMENT

Active8 supports staff in planning challenging and engaging learning experiences which encourage high aspirations and ambitions for all of our learners. Learners of all aptitudes and abilities experience an appropriate level of challenge, enabling each child to achieve their full potential. **Active8** allows pupils to be active in their learning, with daily opportunities to develop and demonstrate their creativity.

BREADTH

Active8 gives all of our learners the opportunity to benefit from a broad range of experiences, enabling them to learn and develop within their classroom and through other aspects of school life. Out of school visits and guest speakers are arranged throughout the year to enhance and reinforce the children's learning.

DEPTH

As they progress through the school, our **Active8** approach helps learners develop and apply increasing intellectual rigour, drawing different strands of learning together and exploring and achieving more advanced levels of understanding. Promoting Higher Order Thinking Skills, which are embedded within Cathedral's skills mats, is central to **Active8**.

PERSONALISATION AND CHOICE

Active8 responds to the individual needs of learners and supports particular aptitudes and talents. It gives learners opportunities to exercise responsible personal choice as they move through the school. The school's curriculum progression pathways act as a safeguard to ensure that choices are soundly based and lead to successful outcomes for learners.

COHERENCE

Pupils' learning activities within **Active8** combine to form a coherent experience. Staff ensure there are clear links between the different aspects of pupils' learning, including opportunities for activities which draw different strands of learning together.

RELEVANCE

Pupils understanding the purpose of their learning activities is fundamental to **Active8**. Pupils are helped to see the value of what they are learning and its relevance to their lives, both present and in the future.

THE FOUR CONTEXTS FOR LEARNING

OLGA Cathedral Primary School pupils learn through all of their experiences – in their families, within their community, at school – and our curriculum continually seeks to recognise, celebrate and complement the contribution these varied experiences make to our children's learning and development. Our curriculum, therefore, includes all of the experiences which are planned for OLGA Cathedral Primary School pupils through their education. These experiences are grouped into **Four Contexts for Learning**:

- **ETHOS AND LIFE OF THE SCHOOL:** the starting point for learning in Cathedral Primary is a positive ethos and a climate of respect and trust based on our shared values of *Love, Connection, Perseverance* and *Growth*.
- **CURRICULUM AREAS AND SUBJECTS:** the curriculum areas are the organisers for setting out the 'Experiences and Outcomes' which OLGA Cathedral Primary School teaching staff use to plan learning and teaching. Each curriculum area contributes to the *Four Capacities*.
- **INTERDISCIPLINARY LEARNING:** our curriculum includes space for regular learning beyond subject boundaries. Some of these IDL contexts are set out in our *Curriculum Overview*.
- **OPPORTUNITIES FOR PERSONAL ACHIEVEMENT:** OLGA Cathedral Primary School pupils have regular opportunities for achievements both in the classroom and beyond, giving them a sense of satisfaction and pride and building motivation, confidence and resilience. Our bespoke '*Rose Trainer Achievement Award*', named after the very first Head teacher of OLGA Cathedral Primary School, provides a framework for many of these opportunities to be captured and recorded.

Each of the *Four Contexts for Learning* is outlined in more detail below:

ETHOS AND LIFE OF THE SCHOOL

OLGA Cathedral Primary School places a strong emphasis on encouraging all pupils to contribute to the life and work of the school and, even from Primary 1, to actively exercise their responsibilities as valued members of our school community.

- 'Smart School Council' gives every Cathedral pupil a voice and, under the leadership of our twelve House Captains, regular opportunities to participate responsibly in decision-making and school improvement.
- Our pupils have opportunities to contribute to the school as leaders and role models including serving as Playground Buddies, Sports Leaders, Pupil Voice Group Chairs and House Captains.
- Pupils have regular opportunities to offer support and service to others and play an active part in putting our shared values into practice. These opportunities include helping younger pupils, spending time with elderly members of our parish community, contributing to community litter-picks and raising money for charities such as Missio and SCIAF.
- OLGA Cathedral Primary School shares a campus with Firpark and Clydeview Primary Schools. Our 'Campus Connections' programme provides regular opportunities for Cathedral, Firpark and Clydeview pupils to come together, build friendships and engage in meaningful learning experiences.
- Our weekly whole-school assembly provides the opportunity for our school community to gather together as a family. Pupils across all stages are actively involved in our assemblies and each stage hosts their own Learning Showcase for their parents and families during the course of the year.



CURRICULUM AREAS AND SUBJECTS

In OLGA Cathedral Primary School, we do not view curriculum areas as structures for timetabling. Rather, we embrace the freedom to think imaginatively about how the *Experiences & Outcomes* might be organised and planned for in creative ways which encourage deep, sustained learning and which meet the needs of our pupils. As can be seen from our *Curriculum Overview* at the back of this document, OLGA Cathedral Primary School provides a *Broad General Education* for all pupils, with staff planning and delivering rich and engaging learning experiences in:

- **Literacy and English** (Listening & Talking; Reading; Writing)
- **Numeracy and Mathematics** (Number, money and measure; Shape, position and movement; Information handling)
- **Health & Wellbeing** (Mental & emotional wellbeing; Social wellbeing; Physical wellbeing; Planning for choices & changes; Physical education, physical activity & sport; Food and Health; Substance misuse; Relationships, sexual health & parenting)
- **Religious Education RC**
- **Modern Languages** (Spanish and French)
- **Technologies** (Digital Literacy; Food and textile technology; Technological developments in society and business; Craft, design, engineering and graphics; Computing science)
- **Expressive Arts** (Art, Music, Drama, Dance)
- **Social Studies** (People, past events and societies; People, place and environment; People in society, economy and business)
- **Science** (Planet earth; Forces, electricity and waves; Biological systems; Materials; Topical science)

Progression pathways have been developed and are in place for all areas of the curriculum.

OLGA Cathedral Primary School curriculum is not resource-driven. Across all curriculum areas, teaching staff draw on a range of resources to support them in planning and delivering engaging learning experiences for pupils. No matter the curriculum area, we place a strong emphasis on problem-solving, critical thinking, investigation and the application of knowledge and skills in real-life contexts.

INTERDISCIPLINARY LEARNING

In OLGA Cathedral Primary School, interdisciplinary learning:

- can take the form of individual one-off projects or longer topics;
- is planned around clear purposes;
- is based on Experiences & Outcomes drawn from different curriculum areas;
- ensures progression in skills and in knowledge and understanding;
- provides regular opportunities for mixed-stage learning

As can be seen from the *Curriculum Overview* at the back of this document, a significant amount of Interdisciplinary Learning in OLGA Cathedral Primary School takes place through class topics. These topics have been carefully selected and developed to ensure they are relevant and meaningful to the unique context of Cathedral Primary and that they develop our pupils' knowledge and understanding of society, the world and Scotland's place in it. However, these IDL contexts are not fixed and OLGA Cathedral Primary teaching staff are free and, indeed, encouraged to respond to the needs and interests of their pupils as well as to significant events such as a General Election, the Olympics or a period of extreme weather.

OPPORTUNITIES FOR PERSONAL ACHIEVEMENT

OLGA Cathedral Primary School provides numerous opportunities for pupils to experience a wide range of achievements in the classroom, the wider school community, at home and in the local and global community. These opportunities and new challenges develop the confidence and resilience of our pupils.

Central to wider achievements in OLGA Cathedral Primary School is our bespoke 'Rose Trainer Achievement Award', named after the very first Head Teacher of the parish school (1878 – 1881). This special award helps Cathedral Primary School recognise and celebrate pupils' wider achievements and acquisition of essential life-skills. Pupils work towards Bronze, Silver and Gold across each of the seven levels (Entry Level, Infant Level 1, Infant Level 2, Junior Level 1, Junior Level 2, Senior Level 1 and Senior Level 2), gaining recognition for such things as being able to dress themselves independently, helping out with chores at home, making a difference in the local community, preparing a meal for their family and doing random acts of kindness. Bronze, Silver and Gold certificates are awarded for each level, with a gold badge being awarded on completion of Entry, Infant 2, Junior 2 and Senior 2 levels.



OLGA Cathedral Primary School offers a wide range of extra-curricular opportunities (known as *Come Clubbing @ Cathedral*), providing pupils with opportunities to develop and hone knowledge and skills out with the classroom setting. These clubs are run by staff, volunteers and in conjunction with Active Schools and local organisations. Extra-curricular clubs include weekly *Friday Football* which runs throughout the year.

Wider achievements are regularly celebrated at assembly and on the school website newsfeed.

AREAS GIVEN PARTICULAR EMPHASIS WITHIN OUR CURRICULUM

OLGA Cathedral Primary places particular emphasis on the acquisition of literacy and numeracy skills. We want all of our pupils to achieve the highest possible levels of literacy and numeracy as we believe these skills open up important opportunities throughout life and provide a sound basis for our pupils to develop as lifelong learners.



Our curriculum also has a strong focus on all aspects of Health & Wellbeing as our ultimate goal is for every child to leave Cathedral Primary having matured into a happy, responsible and rounded individual with the skills and capacity to make a positive, lifelong contribution to society.

Pupils leading their own learning, particularly as facilitated through **play pedagogy** and **Active8**, has an important emphasis across our curriculum. We consider self-discipline to be the only kind of discipline worth having as this lays the foundation for Cathedral pupils to become lifelong learners.



The **Performing Arts** have long held an important place in Cathedral Primary and continue to play a prominent part within our refreshed curriculum.

As a '*Laudato Si*' school, OLGA Cathedral Primary School is invited to respond to the call to be good stewards of God's creation and we endeavour to support Pope Francis' goal of creating an *Ecological Education* within schools. All aspects of **Learning for Sustainability**, therefore, have a particular emphasis within our curriculum.



All OLGA Cathedral Primary School pupils have the opportunity to review their learning with an adult on a regular basis and plan their next steps. The specific needs of all pupils are identified early and are continually monitored. Appropriate support is put in place promptly to ensure all pupils can access learning and reach their full potential. This includes access to a variety of evidence-based interventions, delivered by the 'A Team'. These support pupils with specific additional support needs, those falling out with their expected milestones and pupils who require additional challenge. *Pupil Progress Meetings* provide regular formal opportunities for Class Teachers and the SLT to discuss and plan for the needs of pupils.

All OLGA Cathedral Primary School pupils are supported at points of transition to ensure a seamless learning journey. There are established close working relationships between the school and local nurseries, Our Lady's High School and outside agencies.



OLGA Cathedral Primary School curriculum is not set in stone but is flexible and dynamic. Our school community is committed to continually improving and refreshing our curriculum over time in response to feedback from stakeholders (especially our pupils!), best practice, current research, key legislation and changes in society. We will continue to LOOK INWARDS, LOOK OUTWARDS and LOOK FORWARDS to ensure the absolute best for the young learners of OLGA Cathedral Primary School.

The **Curriculum Overview** overleaf summarises the *Broad General Education* and *Essential Experiences* all OLGA Cathedral Primary School pupils are entitled to, along with the key teaching approaches and core resources we use to support the delivery of our curriculum.



Placing Christ and Our Lady at the centre, and with children at the heart of everything we do, our vision is to continually grow into a strong community of faith and learning in which every child and adult feels happy, safe, loved, included, proud and listened to, with every opportunity to reach their full God-given potential.

OLGA CATHEDRAL PRIMARY SCHOOL: CURRICULUM OVERVIEW

Refreshed May 2023

OLGA Cathedral Primary is committed to providing all pupils with relevant, meaningful and engaging learning experiences which lead to high levels of attainment and achievement. Our curriculum has been carefully designed and developed to be relevant to the unique context of Cathedral Primary School. This overview summarises the entitlements of Cathedral Primary pupils along with the main contexts for learning and various experiences our children enjoy and benefit from as a valued members of our school community.

Developing flexible and adaptable children with the **knowledge** and **skills** they need to thrive now and in the future.

	Primary 1 <i>Early Level.3 progression pathways</i>	Primary 2 <i>First Level.1 progression pathways</i>	Primary 3 <i>First Level.2 progression pathways</i>	Primary 4 <i>First Level.3 progression pathways</i>	Primary 5 <i>Second Level.1 progression pathways</i>	Primary 6 <i>Second Level.2 progression pathway</i>	Primary 7 <i>Second Level.3 progression pathway</i>
Literacy & English <ul style="list-style-type: none">Listening & TalkingReadingWriting	Read Write Inc. phonics Collins Big Cat Talk for Writing Grammar/Punctuation pathway Nelson handwriting pathway	Read Write Inc. phonics Collins Big Cat Talk for Writing Grammar/Punctuation pathway Nelson handwriting pathway	Read Write Inc. phonics Collins Big Cat Talk for Writing Grammar/Punctuation pathway Rising Stars Spelling Nelson handwriting pathway	Reflective Reading Collins Big Cat; Acc. Reader Talk for Writing Grammar/Punctuation pathway Rising Stars Spelling Nelson handwriting pathway	Reflective Reading Collins Big Cat; Acc. Reader Talk for Writing Grammar/Punctuation pathway Rising Stars Spelling Nelson handwriting pathway	Reflective Reading Collins Big Cat; Acc. Reader Talk for Writing Grammar/Punctuation pathway Rising Stars Spelling Nelson handwriting pathway	Reflective Reading Collins Big Cat; Acc. Reader Talk for Writing Grammar/Punctuation pathway Rising Stars Spelling Nelson handwriting pathway
Numeracy & Mathematics <ul style="list-style-type: none">Number, money and measureShape, position and movementInformation handling	CPA approach Hein. Active teaching cards TJ Number Talks	CPA approach Hein. Active teaching cards TJ Number Talks	CPA approach Hein. Active teaching cards TJ Number Talks	CPA approach Hein. Active teaching cards TJ Number Talks	CPA approach Hein. Active teaching cards TJ Number Talks	CPA approach Hein. Active teaching cards TJ Number Talks	CPA approach Hein Active teaching cards TJ Number Talks
Health and Wellbeing <i>Progression pathway covering all eight areas:</i>	<ul style="list-style-type: none">Mental & emotional wellbeingSocial wellbeingPhysical wellbeingPlanning for choices & changes SAFE HEALTHY ACHIEVING NURTURED TECHNOLOGIES <ul style="list-style-type: none">Digital Literacy used to support and enhance learning across the curriculumFood and textile technology (<i>Dedicated Food Technology area timetabled for all classes</i>)Technological developments in society and businessCraft, design, engineering and graphicsComputing science						
Curriculum Areas Taught as stand-alone subjects and through IDL contexts <i>Progression pathway for each curricular area:</i>	ACTIVE RESPECTED RESPONSIBLE INCLUDED RELIGIOUS EDUCATION RC <ul style="list-style-type: none">This is our Faith (30 minutes per day) Religious Education in Cathedral Primary takes place within the context of the wider Catholic faith community, in partnership with home and parish. SOCIAL STUDIES <ul style="list-style-type: none">People, past events and societiesPeople, place and environmentPeople in society, economy and business SCIENCE <ul style="list-style-type: none">Planet earthForces, electricity and wavesBiological systemsMaterialsTopical science EXPRESSIVE ARTS <ul style="list-style-type: none">Music (<i>ABC Music</i>)ArtDramaDanceBi-annual school show; art displayed & celebrated						
Modern Languages	50 minutes of taught Spanish per week; daily reinforcement of Spanish language; Third language: French						
Interdisciplinary Learning Social Studies are mainly taught through a variety of meaningful and relevant IDL topics. Other curricular areas are also regularly taught through IDL contexts. <u>Contexts are subject to change</u> depending on, for example, composite classes or significant events such as the Olympics.	PAST Children in the past PLACE Seasons PLACE Under the ground SOCIETY People who help us SCIENCE My senses	PAST Knights and Castles PLACE My local area SOCIETY Scottish produce SCIENCE Birds, plants and minibeasts	PAST The Romans PLACE The Weather SOCIETY The World of Work SCIENCE Energy, Forces & Materials	PAST The Victorians PLACE Scotland's landscape SOCIETY Learning, Living & Working in N Lanarkshire SCIENCE Electricity & circuits	PAST Scottish Wars of Independence PLACE The River Clyde SOCIETY Schweinfurt SCIENCE The Solar System	PAST The Egyptians PLACE Climate Zones SOCIETY Australia/The Commonwealth SCIENCE My amazing body	PAST World War II PLACE Amazing Africa SOCIETY Democracy and Government SCIENCE Our Fragile Planet
Contributing to Ethos & Life of the School; Personal achievements	Developing knowledge and understanding of society, the world and Scotland's place in it. ROSE TRAINER ACHIEVEMENT AWARD Entry Level Infant: Level 1 Infant: Level 2 Junior: Level 1 Junior: Level 2 Senior: Level 1 Senior: Level 2 Catholic ethos and Gospel Values are central to the life and work of the school COME CLUBBING @ CATHEDRAL (wide range of extra-curricular opportunities) SMART SCHOOL COUNCIL: CaFi Council; Eco; Faith in Action; Health; JRSO; Junior Librarians; Digital Leaders; Playground Patrol; Language Ambassadors						
Essential Experiences Some excursions and highlights may be replaced with similar experiences. Those in bold, however, are fixed and should be considered entitlements for all Cathedral PS pupils.	<ul style="list-style-type: none">P1 Welcome MassStage Learning ShowcaseLocal walkVisit from Fire ServicePantomimeNativityEnd of year trip to Almond ValleySummer holiday safety	<ul style="list-style-type: none">Stage Learning ShowcaseVisit to Motherwell Heritage CentrePantomimeNativityEnd of year trip to Five Sisters ZooSummer holiday safety	<ul style="list-style-type: none">Stage Learning ShowcaseVisit to Motherwell Heritage CentreFirst Reconciliation retreatPantomimeChristmas concertFirst ReconciliationEnd of year trip to Riverside Museum, GlasgowSummer holiday safety	<ul style="list-style-type: none">Stage Learning ShowcaseVisit to Summerlee (travel by train)PantomimeChristmas concertFirst Communion retreatFirst Holy CommunionEnd of year trip to New LanarkSummer holiday safety	<ul style="list-style-type: none">Stage Learning ShowcaseTrip to StirlingPantomimeChristmas concertConnect with primary school abroadEnd of year trip to Glasgow Science Centre (travel by train)Summer holiday safety	<ul style="list-style-type: none">Pope Francis Faith AwardStage AssemblyPantomimeChristmas concertVisit to MosqueBi-annual school showEnd of year trip to EdinburghSummer holiday safety	<ul style="list-style-type: none">Pope Francis Faith AwardLeadership opportunitiesStage Learning ShowcasePantomimeChristmas concertConfirmation retreatConfirmationWalk to Carfin GrottoBi-annual school showResidential tripSummer holiday safety

