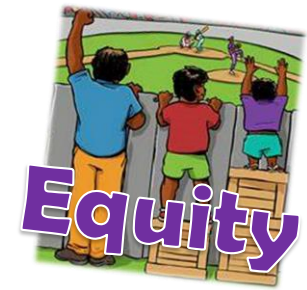


Excellence



Cathedral's use of PEF sits within a culture of having the highest aspirations and expectations FOR EACH AND EVERY LEARNER and a commitment to ensuring opportunities for ALL.



targeted support



Literacy and numeracy

Carefully selected resources and approaches to **strengthen our universal offer** and reduce the need for interventions.



We have a long-term strategy to ensure changes to approaches and systems are 'future-proof' and sustainable in the long-term.



- Increased staff knowledge and expertise in evidence-based approaches to teaching literacy and numeracy.
- Increased attainment in literacy and numeracy.
- Reduction in number of pupils requiring targeted interventions from 'A Team'.

Pupil Equity Fund

Literacy and numeracy

The school's '**Attainment Team**' delivers a range of targeted interventions. This ensures we raise the attainment of all learners, including our most disadvantaged pupils and those facing barriers to their learning. The 'A Team' builds the capacity of staff through training and 'drop-in' sessions and provides targeted Family Learning to parents and carers.

- Increased attainment in literacy and numeracy.
- A narrowing of the poverty-related attainment gap.
- Increased staff knowledge and expertise in evidence-based approaches to meeting the needs of learners who require additional support in literacy and/or numeracy.
- Parents and carers upskilled to support their child's learning at home.

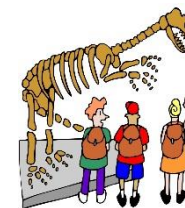
- We have embedded a culture of reading for enjoyment by giving all pupils access to a wide range of high-quality books in the classroom and in our school library.
- An online reading library gives pupils in-school and at-home access to a wide range of books at their own level.
- All pupils, engaged in their learning through our Active8 approach, have access to high-quality resources.



Highest quality resources to **inspire and support learning.**

Supporting Learners' Health & Wellbeing	
UNIVERSAL	<ul style="list-style-type: none"> • Allowing for a range of learning opportunities • Ensuring that all learners have access to the school's resources • Ensuring that all learners have access to the school's resources • Ensuring that all learners have access to the school's resources
ADDITIONAL	<ul style="list-style-type: none"> • Ensuring that all learners have access to the school's resources • Ensuring that all learners have access to the school's resources • Ensuring that all learners have access to the school's resources
INTENSIVE	<ul style="list-style-type: none"> • Ensuring that all learners have access to the school's resources • Ensuring that all learners have access to the school's resources • Ensuring that all learners have access to the school's resources

A range of intensive Health & Wellbeing support and interventions are available to pupils who self-refer or are referred by their class teacher.



PEF is used during the course of each year to ensure no learner misses out on any of Cathedral's '**essential experiences**' such as a school trip, a club or the P7 residential excursion.

