

Noble Primary School

Shirrel Avenue, Bellshill, ML4 1JR

☎ 01698 274907

Twitter: @Noble_p_s

✉ enquiries-at-noble@northlan.org.uk

💻 www.noble.n-lanark.sch.uk



Our shared vision: Working together to create a nurturing, inclusive, rights respecting community, where learning is exciting, challenging and relevant.



December



Dear Parents and Carers,

We are now in the month of December, and we can certainly feel it in the air! School has been very busy over the past few weeks as we begin to prepare for our Christmas festivities.

Thank you to those that made it along to our recent Christmas Fayre, we had a tremendous turn out. The Parent Council made a fantastic £1200, which is a tremendous amount of money. On behalf of the school community, I just want to thank our Parent Council members for organising such a great event. Thank you for your continued support. This money goes a long way to help us keep costs low. We now look forward to all the festivities of parties etc as well as P7 off to Lockerbie Manor tomorrow!

As this will be the final newsletter of 2024, may I wish you and your family a very Merry Christmas and a Happy New Year!

Yours sincerely,

Mrs Suzanne Brown

Acting Head Teacher



December's Right of the Month: Article 23

If I am disabled, I have the right to special care and education.

Article 14 of the UNCRC says that Disabled children should be supported to reach their full potential. They should be provided with activities with others so that they can be an active participant in their own community.

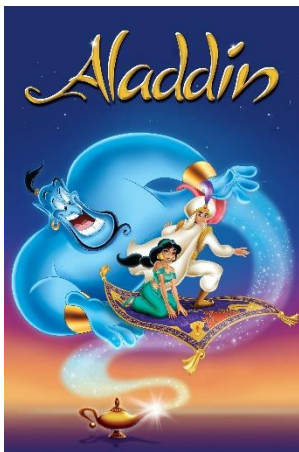
Governments should make sure disabled children receive an education, health care and opportunities to relax, play and do other activities.



Our P7 children will be visiting Lockerbie Manor Residential from Wednesday 11th to Friday 13th December.

Mrs Fraser, Mr Sharkie, Mrs Crichton and Mrs Brown are accompanying them. Many thanks to the staff who are helping out by covering classes 😊





It's Panto Time Wednesday 18th December

Buses will be leaving at 9:10am. No need to bring a snack – we will provide them. We will be back in time for lunch. **Snack to Go or own Packed Lunch.**

Christmas Party Arrangements

Class Parties

A note of party dates are below:

P1 & P2s - Monday 16th December

P3 & P4s - Tuesday 17th December

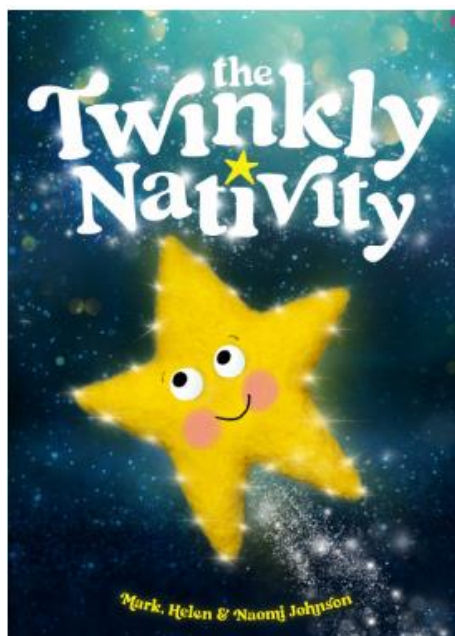
P5, P6 & P7s - Thursday 19th December

On your child's party day, the arrangements will be as follows:

- The children can come dressed for their party or can go home at lunchtime to get changed.
- Those going home will be dismissed at 12:30pm from their gate.
- The children should return to school via the gate for 1:15pm.
- Those not going home will remain in school as normal.



The Twinkly Nativity



Primary 3 are leading our Nativity this year, with P1 and P2 supporting them as their choir. Tickets are on sale from the school office.

The performance times are below:

Tuesday 10th December 9:30am & 1.45pm



Christmas Assembly

The Christmas Assembly will be on Thursday
19th December at 9.30am.

Our School Choir and Music Group will be
performing.

Tickets will be available on a first come first
served basis.

Our School Choir will be performing at Bellshill Parish Church along with Mossend and Lawmuir Primary on Thursday 19th December. Everyone is welcome.



The flu vaccine is the safest, most effective protection against flu.



The Flu Vaccination Team will be in Noble Primary on Thursday 19th December.



Primary 1 Enrolment 2025-2026

Parents/carers of children who reach the age of five years between 1 March 2025 and 28 February 2026 should register by the end of January 2025 for starting Primary 1 in August 2025.

Noble Primary School Enrolment

Monday 13th January
9.15am to 10.15am & 3.00pm to 4.00pm

-

Tuesday 14th January
9.15am to 10.15am & 3.00pm to 4.00pm

-

Wednesday 15th January
9.15am to 10.15am

School will close at 2.30pm on Friday 20th December and will re-open at 8.55am on Monday 6th January 2025.

February Mid Term Break Monday 17th & Tuesday 18th February 2025

