

Our Ref: SB/JD/001  
Your Ref:  
Contact:  
Tel: 01698 274907  
E Mail: enquiries-at-noble@northlan.org.uk  
Date: 23<sup>rd</sup> August 2024



**Education and Families**

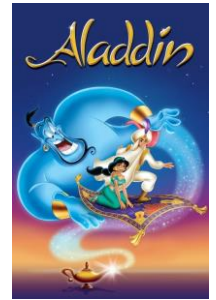
Suzanne Brown  
**Head Teacher (Acting)**  
Noble Primary School  
Shirrel Avenue  
Bellshill ML4 1JR  
www.northlanarkshire.gov.uk

Dear Parent/Carer,

**Ravensraig Regional Sports Facility**  
**Aladdin**  
**Wednesday 18<sup>th</sup> December**

This year we will be taking the whole school to see a morning performance of Aladdin at Ravensraig on Wednesday 18<sup>th</sup> December. The pupils will be transported by coach there and back.

The cost of this trip will be £13.00 (per child), which can be paid through your child's iPay account either in full or instalments, this includes refreshments and transport. We have managed to keep the costs down thanks to the generosity of the Parent Council who have paid the travel costs.



**Payment in full must be received by Friday 13<sup>th</sup> December.**

Yours faithfully

Mrs S Brown  
Acting Head Teacher

---

**Aladdin – Wednesday 18<sup>th</sup> December**

Child's Name: \_\_\_\_\_

Class: \_\_\_\_\_

I will pay through iPay.

I would like a savings card.

Signed: \_\_\_\_\_

Date: \_\_\_\_\_

