

Cost of the School Day Policy and Practice 2024



"Newmains Primary School C.A.R.E.S"



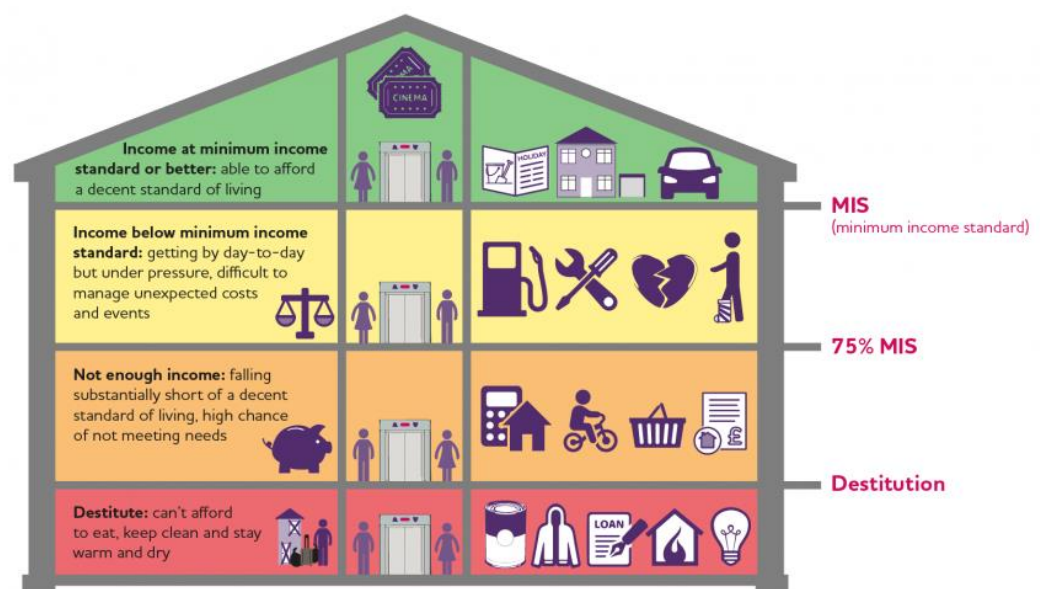


Poverty Definition

The Joseph Rowntree Foundation published the impact of poverty has on young people and how this influences their experience of school. It highlights many families struggled with costs and school leaders increasingly are facing families challenged with additional costs.

Horgan, G. (2007) The impact of poverty on young people's experience of school. The Joseph Rowntree Foundation.

Joseph Rowntree Foundation - 3 levels of poverty



OECD identifies the challenges faced by children who have a disadvantaged background and acknowledges no country has yet got rid of inequality in education. It highlights improving equity in education is a priority.

OECD (2018), Equity in Education: Breaking Down Barriers to Social Mobility, PISA, OECD Publishing, Paris



Newmains Primary School

Vision and Values

Our school values are important to our school, and we hope that every child develops these positive traits to learning and their life in general. Our values are:

Community
Achieve
Respect
Everyone
Safe

This shapes our school motto of “Newmains CARES” and our vision at Newmains Primary.

We believe that every child has a right to the best education possible in a safe, secure and happy environment.

The whole school community has a shared responsibility to nurture each child so that they enjoy their childhood and achieve their full potential.

Newmains





Poverty Proofing

We have a key role to play in tackling poverty and serving all learners equally is not enough – there needs to be a specific focus on those children and young people who are growing up in poverty. Within Newmains Primary School we believe that tackling disadvantage is at the heart of what we do.

More than one in five (210,000) children across Scotland are officially recognised as living in poverty. In North Lanarkshire, it is estimated that 24.9% (17, 922) of children are in poverty. Insufficient household income can mean that some children and young people don't have the resources needed for school and can't easily afford to take part in school activities which cost money. This can put them at risk of missing out on opportunities at school and feeling different, excluded and unhappy.

UNICEF estimates that 19% of British children live in food insecure households. This means that there are times when their household does not have enough money to buy enough food, or they cannot buy the full variety of foods needed for a healthy diet.

Education structures, policies and practices affect children and young people from low income households and can present difficulties and financial barriers to participation throughout the school and nursery day.

Understanding more about this from children's perspectives can support Education and Families, schools and family learning centres to poverty-proof their policies and practices so that conditions are right for all children and young people to learn and to achieve.





This policy details our plan to poverty proof Newmains Primary School

We are committed to improving inclusion and ethos. We are **poverty proofing our school** through engagement with stakeholders. Taking into account our school context and the value of **equity** in education, this will lessen financial barriers and be a positive action to tackle the negative impact poverty has on children, young people and their families. To ensure devolved ownership we have included the opinions and views of the following stakeholders.

- Young learners
- Staff
- Parents/carers
- Parent Council
- NLC Cost of the School Day working group
- Cluster partner schools

This policy outlines how we will implement and develop poverty proofing strategies in line with 'A Curriculum for Excellence'.

It provides practical guidance for staff, parents and pupils.

The policy should be used as a working document to inform and support.

It can be used by individuals, in whole school contexts and by our many partner agencies for support. It can also be used for self-reflection, planning, monitoring and evaluation of strategies.

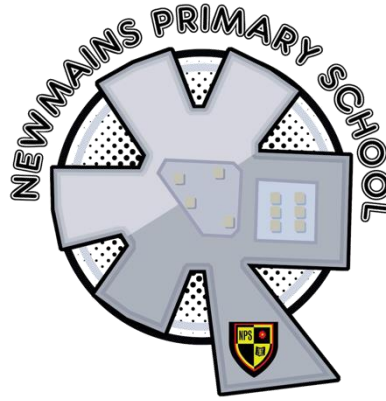
Pupil Equity Funding (PEF)

The Pupil Equity Funding is being provided as part of the £750 million Attainment Scotland Fund which will be invested over the current parliamentary term (2016 to 2021).

The Pupil Equity Funding is allocated directly to schools and targeted at closing the poverty related attainment gap.

Every council area is benefitting from Pupil Equity Funding and 95% of schools in Scotland have been allocated funding for pupils in P1-S3 known to be eligible for free school meals.

This funding is to be spent at the discretion of the head-teacher working in partnership with each other and their local authority. Schools will now have their plans in place for using their funding and will be implementing those plans.



"Newmains Primary School C.A.R.E.S"

In Newmains Primary :-

- We know what the poverty-related attainment gap relates to,
- We use SIMD and tracking data to identify and review the progress of children living in poverty,
- We plan additional activities, interventions and resources to raise attainment in literacy and numeracy to work towards all children achieving in line with national expectations,
- We maintain a focus on health and wellbeing,
- We continually evaluate the impact on children's progress and attainment and take further action where needed.

Our policy covers four over-arching themes:

1. **School and Nursery Poverty:** this section of the policy focuses on tackling poverty via a review of the 'Cost of the School Day' and the continued focus on tackling period poverty.
2. **Food Poverty:** this section of the policy links to North Lanarkshire's 'Children's Right to Food Charter', increasing the uptake of free school meal and breakfast club provision.
3. **Maximising Income:** this section of our policy focuses on maximising income via Financial Education and Welfare Advice for children and their families in partnership with North Lanarkshire's Financial Inclusion Team.
4. **Fuel and Material Poverty:** this section of our policy focuses on consideration of the impacts of these types of poverty and actions which must be taken.

The policy will be reviewed regularly to ensure that it continues to reflect educational developments and legislation





Newmains Primary is a GOLD Rights Respecting School



Article 27

Article 27 of the UNCRC states that every child has the right to a standard of living that allows them to develop physically, mentally, spiritually and socially.

Poverty can mean children have a standard of living that falls below this threshold

Article 3

Article 3 states that children's best interests must be a primary consideration in all actions that affect them. This includes decisions around welfare and support that significantly impact on families.

Article 6

Article 6 recognises that all children and young people have the right to survive and the right to develop.

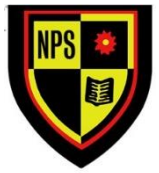
Article 12

Article 12 states that children and young people's views should be meaningfully considered on matters that affect them.

Article 24

Article 24 states the children and young people have the right to the best health possible. This includes the right to adequate and nutritious food, which can be affected when children and young people experience food insecurity.

In Newmains Primary, we are aware that living in poverty can make children more vulnerable and can also be a barrier to learning. We aim to embed a child rights approach into all aspects of



school life and ensure the principles of the United Nation's Convention on the Rights of the Child permeate everything we do for our pupils, staff, parents and community.

Section 1

School and Family Learning Centre Poverty

Theme 1- School Uniform

School uniform is a practical way to mitigate against the effects of poverty. North Lanarkshire Council believes that uniform promotes unity and pride within schools. The wearing of uniform reduces the potential for bullying and prevents individuals from becoming self-conscious or embarrassed about their clothing. Therefore branded items should be discouraged.

In Newmains Primary:-

- All students are welcomed into our school irrespective of their attire and we consider pupil circumstances and make exceptions to uniform breaches.
- We encourage young people and their families to make use of our clothing carousel.
- We advertise how to apply for the clothing grant.
- We assist young people with laundering when required
- We promote a variety of suppliers to purchase uniforms
- We discourage branded items being worn in school.



"Newmains Primary School C.A.R.E.S"





Theme 2- Equipment and Resources

Consideration should be given to the fact that many family budgets do not extend to the purchase of stationary items for school. This can extend to internet access, electronic devices and ink.

In Newmains Primary:-

- We provide a bank of resources in each classroom to address all planned learning activities; including specialised equipment for cross curricular activities.
- We provide spare P.E kits and gym shoes
- We provide each child with the equipment and resources needed to take part in all learning both in class and at home.
- We highlight the clothing carousel can be used and ask for donations regularly
- We discourage young people from bringing unnecessary and expensive items to school.

Theme 3- School Trips

The cost associated with educational excursions can cause anxiety for families.

In Newmains Primary:-

- We consider the wider school calendar and the impact of events when planning trips and affordability is taken into account.
- We give appropriate time to pay – option to pay throughout year for larger spends and provide a calendar of events to allow parents to budget in advance.
- Different payment options are given – both online and physical payments.
- For day trips we provide a packed lunch for young people who receive a free school meal.

Theme 4- Charity, Fundraising Activities, School Shows and Themed Days

Charity, fundraising activities and themed days can play a positive role in the life and ethos of a school. However, it should not be assumed that all children can afford to make even small donations. Many families simply do not have any additional funds to spare.

In Newmains Primary:-

- We are aware that some families may be accessing charitable funds and foodbanks.
- We allow a donation to be given instead of suggested amount.
- We put these events into the calendar or give a suitable length of time to alert parents.
- We demonstrate consideration when collecting donations.
- We allow family donations where there are multiple children in our school.
- We communicate provide regular and timely information to parents on our Twitter page



- We discourage children from giving gifts to their teachers and vice versa.

Theme 5- Homework and Out of School Hours Learning

Home learning and out of school hours learning can enhance children and young people's learning experiences. However, these should be fully inclusive and have a minimal or no associated cost.

In Newmains Primary:-

- We provide resources required.
- We believe homework is beneficial but accept not everyone is able to complete it at home.

Theme 6- Period Poverty

Period poverty refers to a lack of access to sanitary protection due to financial constraints and is the reality affecting girls and young women across the country. Improving menstrual health management (MHM, also known as 'period poverty') can substantially improve education and health and wellbeing.

In Newmains Primary

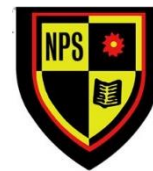
- Sanitary products are available easily to all pupils and are provided in a sensitive and dignified way.
- We provide sanitary products for pupils during the holidays.
- Sanitary products are distributed in care packages for P4-7

Section 2

Food Poverty

In Newmains Primary staff are aware of impact food poverty has on learning and know to refer pupils to SLT.

- Advertise support available to families through newsletters, our website and Twitter
- School to have collections and work closely with local churches and charities.
- Breakfast Club offered before school day.
- Additional breakfast offered after 9 am in Nurture room.
- SLT offers food/snacks to children who come to school hungry
- All staff are aware of how to refer when hunger is a barrier to learning



Section 3

Maximising Income

In Newmains Primary we offer Financial Education and advice for children and their families in the following ways:

- We recognise financial education is more than just the coins and notes to use
- We use Nat West 'Money Sense' workshops to develop skills surrounding-
 - Credit and Debit cards
 - Bank Statements
 - Borrowing money and debt
 - Budgeting
 - Profit and Loss
- We use a variety of resources to teach the financial skills pupils need for life and work and relate learning to real life contexts.
- We use MACA project workshops such as 'Money tree' and 'Money Savvy'

Money -

Early Level	I am developing my awareness of how money is used and can recognise and use a range of coins. MNU 0-09a
First Level	<p>I can use money to pay for items and can work out how much change I should receive. MNU 1-09a</p> <p>I have investigated how different combinations of coins and notes can be used to pay for goods or be given in change. MNU 1-09b</p>
Second Level	<p>I can manage money, compare costs from different retailers, and determine what I can afford to buy. MNU 2-09a</p> <p>I understand the costs, benefits and risks of using bank cards to purchase goods or obtain cash and realise that budgeting is important. MNU 2-09b</p> <p>I can use the terms profit and loss in buying and selling activities and can make simple calculations for this. MNU 2-0</p>

For families living in poverty, we will offer support in partnership with the Financial Inclusion Team, Employability Resources, CLD and, where appropriate, Health and Social Work for advice and support.



Section 4

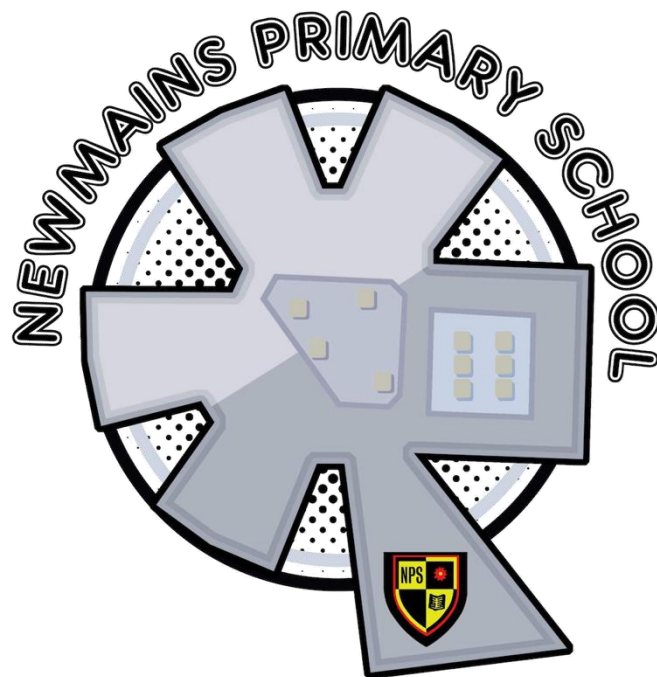
Fuel and Material Poverty

In Newmains Primary, we will make a referral to the Financial Inclusion Team if we think a family is experiencing fuel and/ or material poverty.

We promote 3rd sector support agencies and signpost parents to relevant agencies for suitable support.

Referral to Financial Inclusion Team

If you are struggling, call the team now on **01698 332551** or email TPTeam@northlan.gov.uk



"Newmains Primary School C.A.R.E.S"