

Family Involvement Strategy 2023

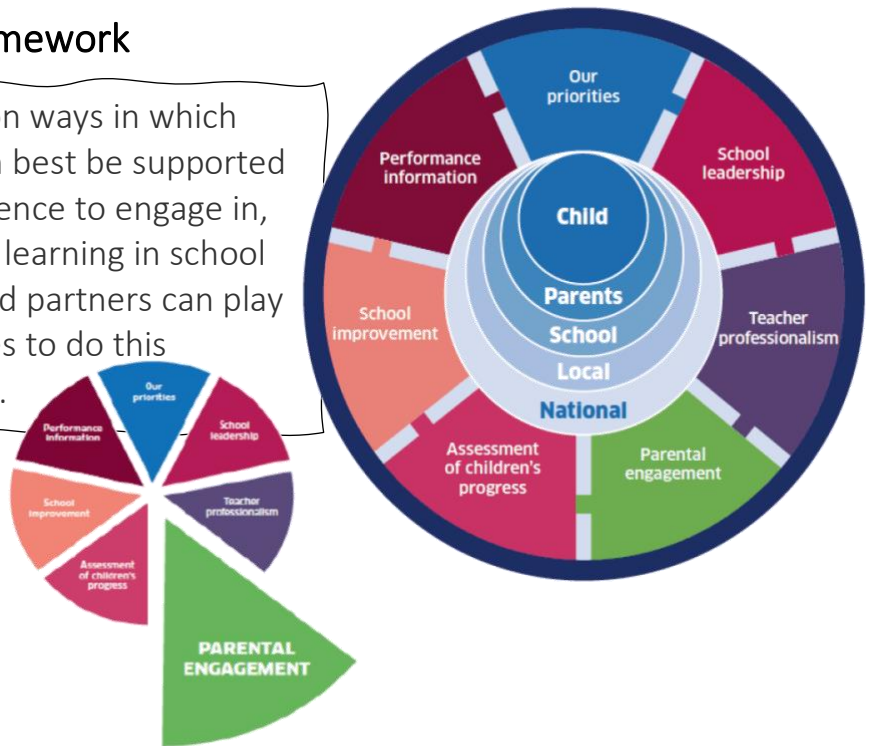
1.1 National Context:

Scottish Schools (Parental Involvement) Act 2006

Aims to promote the involvement of the parents of pupils in attendance at public schools in the education provided to those pupils by the schools.

National Improvement Framework

Parental engagement focuses on ways in which parents, carers and families can best be supported to develop the skills and confidence to engage in, and encourage, their children's learning in school and in everyday life. Schools and partners can play a vital role in supporting families to do this effectively and with confidence.



1.2 Local Context:

North Lanarkshire Council Family learning and parental engagement plan recognises the importance of parents and carers being fully engaged, and equal partners, in their child's learning. This includes learning at home and in the community as well as in schools and other formal settings. In line with recognised priorities and the needs of parents, carers, and families the plan focuses on health and well-being, literacy, numeracy, digital inclusion, transition, tackling poverty, engagement, and empowerment.

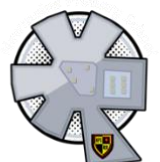
Plan can be obtained [here](#).



1.3 School Context:

Our school values are important to our school, and we hope that every child develops these positive traits to learning and their life in general. Our values are:

- Community
- Achievement
- Respect
- Everyone
- Safe



We believe that every child has a right to the best education possible and that this will happen in a safe, secure, and happy environment. The whole school community has a shared responsibility to nurture each child so that they enjoy their childhood and achieve their full potential.

Principles of Parental involvement and engagement are not ends in and of themselves. They serve a purpose, and that purpose is to support the learning and development of children and young people.

This is based on three key principles:

- 1. That our priorities and our approach should be guided by the needs and interests of the child and their family.**
- 2. That parents are the primary educators of children.**
- 3. That it is only through positive relationships – relationships between families, and those working with children and young people, relationships based on trust, mutual respect, and partnership - that we will achieve our aims.**

2.1: Methods of Involvement

We currently engage our families in the following ways:

Communicate with families		
Parent's Evenings	Pupils reports	Email contact
Twitter	School website	Letters/Leaflets
Telephone contact	Monthly Newsletter	Microsoft Sways
Microsoft Forms Surveys	Wellbeing Festival	School App
Involve families		
Parent Council	Help at school/trips	After school clubs
Wellbeing Festival	Open days/evening	Microsoft Forms Surveys
Solihull UYC	Uniform Bank	GIRFME Plans
Chat n Chill	Miracle Foundation	Workshops

Communicate with families

Parent's Evening: We host twice yearly parent's evenings at the school where families can make an appointment to speak with their child's teacher about their progress. Families have access to their child's work. Members of the senior leadership team are also available to discuss any issues pertinent to the family.

Pupil reports:

A full academic report is issued once a year in June highlighting the progress undertaken that year.

Communication: The school communicates important information via email, twitter, the school website, letters and leaflets, school app, telephone calls and text messages. Teachers also communicate class news via Microsoft Teams.

Newsletters:

Mr Smith provides a monthly overview and what's ahead in the school calendar via our Newsletters. These take the form of a digital Microsoft Sway and paper copy sent home in family groups.

Surveys: The school regularly seeks input from our families using Microsoft Sways. Examples of recent parental input include

- How Good is Our School,
- Annual Improvement plan,
- Anti-bullying Policy,
- Chatting about attendance
- GIRFME plans
- Newmains CARES values refresh

Wellbeing Festival: We have run a yearly Wellbeing Festival since 2019. The aim of the festival is to share the great advice and learning the school receives with our families.

Involve families

Parent Council: Our parent council meets on the first Wednesday of each month, 630-730pm. Those who attend hear an update on the school and the school improvement plan, are updated on events and plan future events aimed at raising funds and helping meet the needs of the children in our school.

Volunteer: We are always looking for volunteers at the school to help with trips, after school clubs, walking bus and in school. To volunteer, access the Form [here](#).

Open Days/Events: We recently hosted several open days/evenings to allow our families the opportunity to see inside the new school building. Now that we are in the new school, we hope to have more opportunities to get our families in to see the great work done by the pupils and staff alike.

Wellbeing Festival: Get involved in your child's school life by attending the festival to hear the great work and great advice that the school can offer to help you and your child's health and wellbeing.

Solihull Understanding Your Child: This group is run as needed in the school by the trained lead Ms Hamilton. It is a fabulous opportunity to explore behaviour as communication, your interactions with your child, and work with other parent/carers in sharing your experiences of what works with your child.

GIRFME Plans: Some of our pupils need a little extra support and these children will have a GIRFME Plan written with the class teacher and the child, listing the strategies and supports that help them access the curriculum and enjoy positive social interactions. If your child needs and GIRFME Plan, you would be contacted to share your input.

Chat n Chill: Mrs McKay runs Chat n Chill sessions with pupils who have either self-referred or are referred by their class teacher. Parents are involved and can enjoy a session with Mrs McKay on request.

Miracle Foundation: We have been working with The Miracle Foundation for several years, offering play therapy to 5 pupils per session who are either referred by the family or the class teacher.

Workshops: Recent workshops have been literacy and numeracy in early years and Read, Write, Count gifting event for Primary 2 and 3.

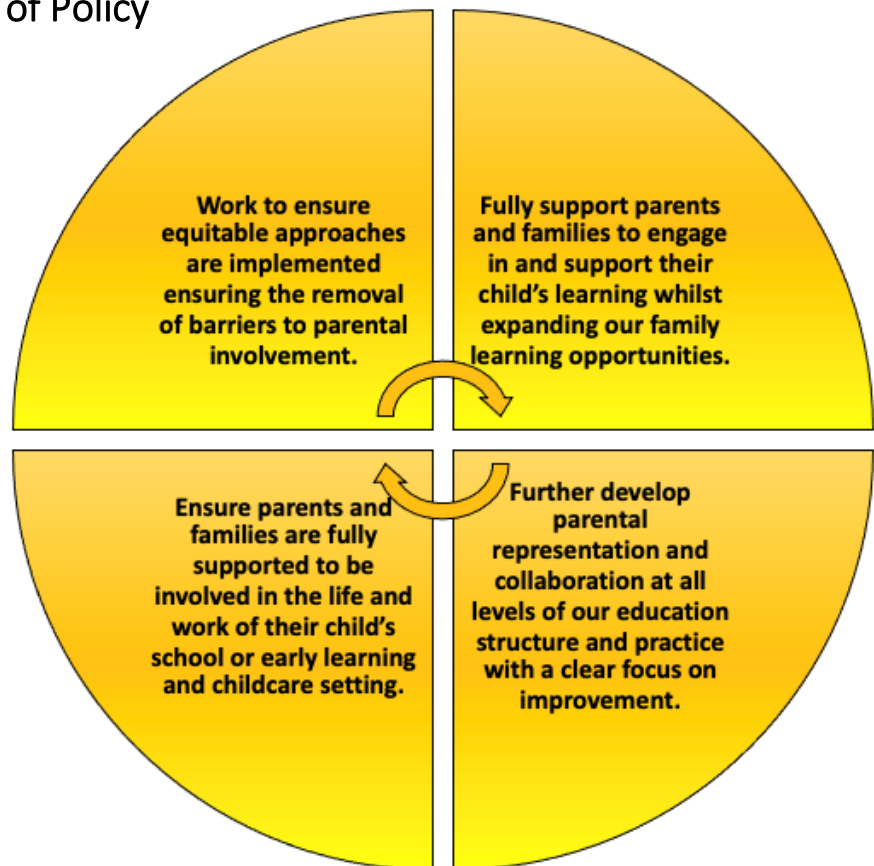
Uniform bank: We are always looking for nearly new donations of school uniforms for our Uniform Bank. This is available from the foyer of Newmains Primary wing in the new build and all families can access this. Simply ask at reception or speak with a member of staff to see what is on offer.

'Parents and families are the most important and influential people in children and young people's lives and are central to achieving our aims of raising attainment for all and closing the attainment gap. We will support all schools to further improve parental engagement and develop family learning programmes that support children's progress and achievement. This also means empowering parents and enabling them to be active participants and effective contributors to the life of the school and to school improvement'

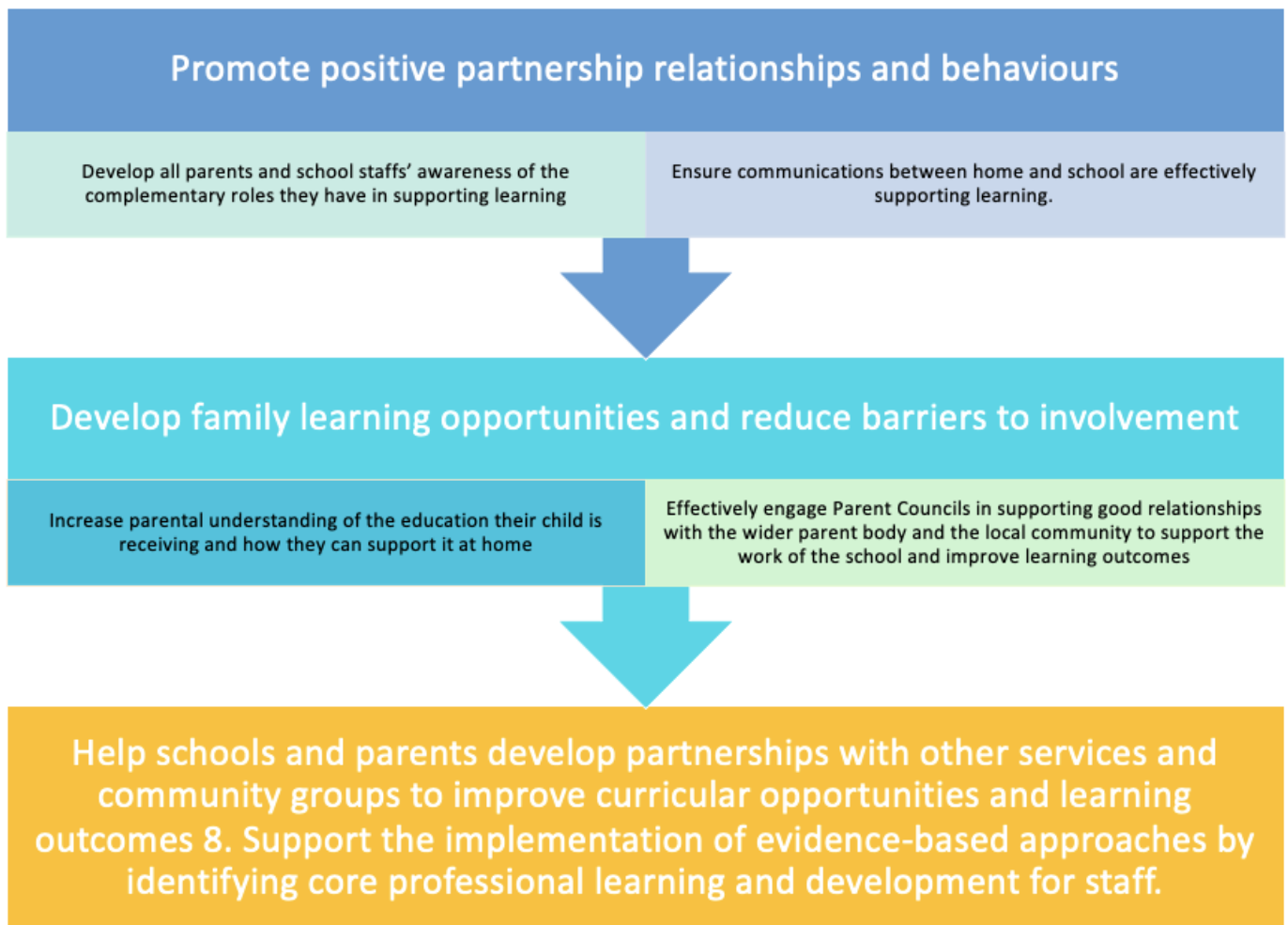
Delivering Excellence and Equality in Scottish Education

2.2: Aims and Objectives of Policy

Our Aims:



Our objectives are to:



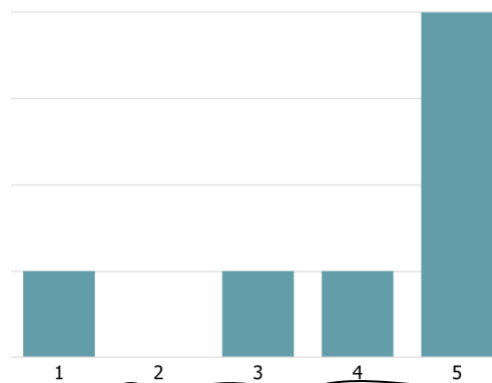
Consultation Process

The school community was consulted in the making of this strategy during March-April 2023.

I feel that there is enough information in the document, explaining what parental engagement is and how the school encourages it. (1=strongly disagree 5=strongly agree)

[More Details](#)

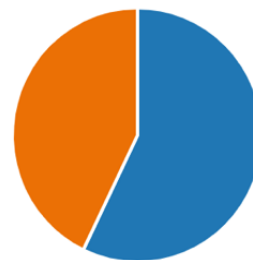
4.00
Average Rating



I think the strategy should have a section on how families can help their child at home.

[More Details](#)

● Yes
● No



Parental Engagement as a term does not necessarily include the different families in our school community. Please select the option you would like to see used:

Parental engagement: 0%

Parental Involvement: 0%

Family Engagement: 29%

Family Involvement: 57%

Community and Partnership Working: 14%

Families were invited to comment with other suggestions relating to how they feel engagement can be improved:

Talking to their child about their day, playing games, getting them involved in food shopping, cooking etc, reading with their child (to them or getting child to read), encouraging their hobbies and interests, being supportive of the school and talking positively about it.

More explanation sent home with homework for parents/carers to help.

My child does not to attend outside school (clubs etc) as he is unable to attend there.
Online or more accessibility for families with other children to use.

Next Steps:

- Teaching staff will discuss the need for greater explanation for homework tasks.
- Infant workshops that were ran in January, will be repeated to improve understanding about home learning. Discussion to be had about senior workshops.
- Outside agencies approached about a variety of afterschool clubs and ones that younger siblings can attend.

Policy will be reviewed
June 2024