

MOSSEND PS & NC

Newsletter

January / February 2025

Dear Parents and Carers,

Happy New Year to you all! We hope you had a wonderful and restful break with your families and have managed to avoid the various bugs doing the rounds!

We recognise that Christmas and New Year can also be a difficult time for some of us for many reasons. If your break was difficult in any way, and you would like to talk about it, then please don't hesitate to pop into the school for a cuppa and a blether with any of our management team. We are here to listen, help and support, in any way that we can.

This term is always a good solid term to build on children's learning and so it is vital that children attend school consistently. Our current overall attendance percentage is sitting at 92.88%, with the biggest concerns resting with our P2 and P7 cohorts whose attendance is sitting at 90.60% and 90.87% respectively. The management team will continue to follow the procedures in North Lanarkshire's Supporting Attendance Policy to ensure all children are in school as much as possible. We will be in touch with all families whose child's attendance has fallen below the expected average of 90 – 95%.

We hope you find this newsletter useful and informative, but if you have any queries or concerns, please don't hesitate to get in touch. In the meantime, keep an eye out for our tweets and emails for the latest updates.

Yours sincerely,

Tracey McCulloch

Head Teacher



We are a **Reading School**



Birthdays

A big 'happy birthday' to the following school children who celebrate their birthdays in January or February: Keira, Shaye, Mason, Lily, Kirsten, Lennox, Lucy, Charlie, Violet, Carson, Calvin, Savannah, Riah, Paige, Calan, Niamh, Rebecca, Leo, Dylan, Harlie, Alicja, Laura, Lucia, Efraim, Ryan, Liam, Ruby, Aiden, Lucy, Christopher, Aiden, Caoimhe-May, Ellie, Alexis, Jack, Eli, Larson, Arianna, Andrew, Riley, Maisie, Khara, Stefanos, Jett, Eilidh, Orla, Mason, Jude, Jack, Aiden, Sofia, Katie, Theo, Aria and Adley.

And also, to the following nursery children who celebrate their birthday in January or February: April, Leyton and Adam.

Your Mossend friends hope you all have a very special day!



Mossend Nursery

Santa Dash

We would like to say a huge thank you for supporting Nursery Fundraising through our Santa Dash. We raised an amazing £492.00 which will go to developing our Environment with resources to challenge and support learning. We will keep you updated with our journey.

Target Setting

We are really proud of how our new starts have settled into their routine. Staff will be in touch with all parents/carers to make an appointment with you to review individual targets. Appointments will be scheduled for the end of January/beginning of February.

Parent/Carer feedback

We appreciate and have listened to your feedback following the recent survey and purchased new resources for our literacy area. We will continue to ask your views as we develop other areas within the Nursery.





Attendance and Lateness

Attendance continues to be a strong priority across our authority, and nationally. At Mossend PS we are monitoring attendance closely, and working alongside partner agencies to support families in improving this.

There is a direct link between attendance and attainment and we cannot stress the importance of good attendance for your children.

We would be grateful if you could ensure that your child arrives at school for their start time so they do not miss key teaching and learning.

If you are needing to report pupil absence, this can be done via Parents Portal. If you are planning to phone the school, please call after 8.15am as the office is not staffed until 8.15am.

School Uniform for Session 2024/2025

We would like to say a huge thank you to our families for once again supporting our uniform policy. We are so proud of how smart the children look with almost all children wearing the appropriate uniform each day. A reminder of our uniform policy:

Formal Uniform

- Royal blue jumpers and cardigans (school branding optional)
- White shirt and tie
- Grey trousers/pinafores/skirts
- Blue Tartan pinafores/skirts

Please note, the colour black is not in line with the school's uniform policy.

PE Kit

- Royal blue hoodie or jumper
- White t-shirt/polo shirt
- Black leggings, shorts or joggers

Children will be permitted to come to school wearing their PE Kit on gym days (twice per week) as long as they are in correct formal school uniform on the other 3 days.

Nursery Uniform (Uniform is not compulsory for nursery children)

Royal blue polo shirt and sweatshirt or own clothes.

Appointments (Reminder)

Where possible, appointments should be made out with the school day. If this is not possible then an appointment letter should be produced in advance of when your child needs to be excused from class time. Please call in advance and inform us of appointments.

We have an increasing number of children with afternoon appointments, particularly on a Friday. This is disruptive to learning, and to the running of the school through unplanned office interruptions at busy times.

We appreciate your understanding with this.



Water Bottles

Since the implementation of the Single Use Plastics Ban (2022), we are unable to provide pupils with plastic cups throughout the school day for a drink of water.

Please ensure your child comes to school with a water bottle.

Pupils will have access to water throughout the school day to fill up their bottles.



Mobile Phones

We have discussed our mobile phone procedures with the children during assemblies. Please see below for a reminder of these procedures:

- In the first instance, we would prefer if all children could avoid bringing mobile phones to school where possible.
- If a child does need to bring a phone to school then this must be switched off as they enter the school grounds.
- All phones will be collected by the class teacher during morning registration and stored throughout the day in the school office.
- Phones will be returned to children just before the end of the school day.
- Phones can be turned on again when the children exit the school grounds.

Mossend House System

House Captains and Vice-Captains have started taking turns at assembly to introduce themselves to the whole school by creating a PowerPoint slide all about them. We are hoping to give them more responsibility in the coming assemblies.

Clydesdale

Calder

Milnwood

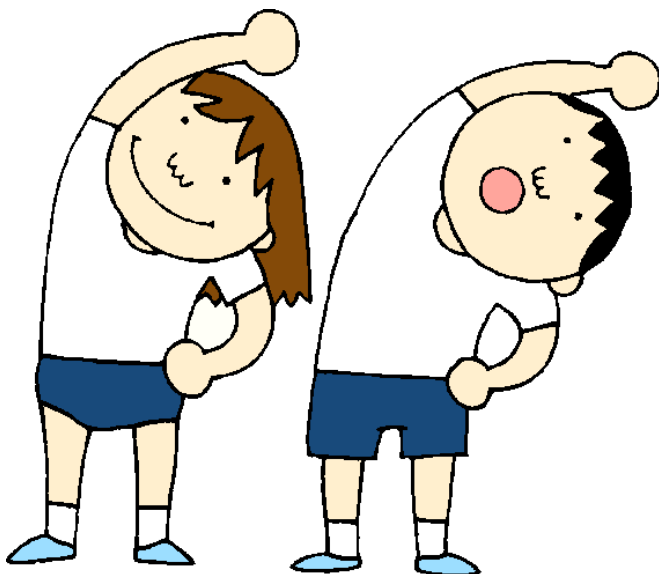
Orbiston



Health and Wellbeing

Active and Respected are the focus indicators for January and February. Examples of some learning that will take place across the school include; learning how to express and manage feelings and learn a range of strategies to help support in challenging times. Other stages will learn about the importance of being active and identify different ways to be active. In depth information on all HWB learning can be found online at <https://healthyschools.scot/planning-framework>

We are currently arranging after school sports clubs which will focus on Primary 1 and 2. Information will follow shortly.



Physical Education (Reminder)

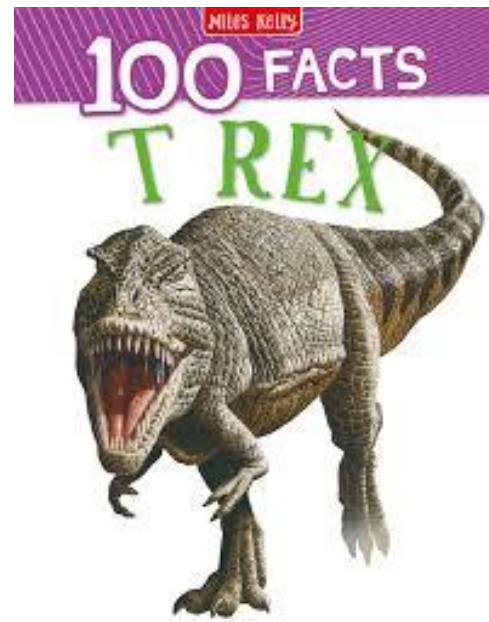
We continue to ensure that our children receive their 2 hour entitlement of physical education each week. This comprises of 1 hour of indoor PE, and 1 hour of outdoor PE. On these days we would appreciate your support in ensuring that long hair is tied back, jewellery is removed, and children have their water bottles with them.

In relation to new piercings, these must be covered with a plaster either prior to coming to school, or children need to apply themselves in school. This is in accordance with NLC guidelines to ensure that children can access their entitlement safely.

Reading Schools

Pupils' Book Recommendations

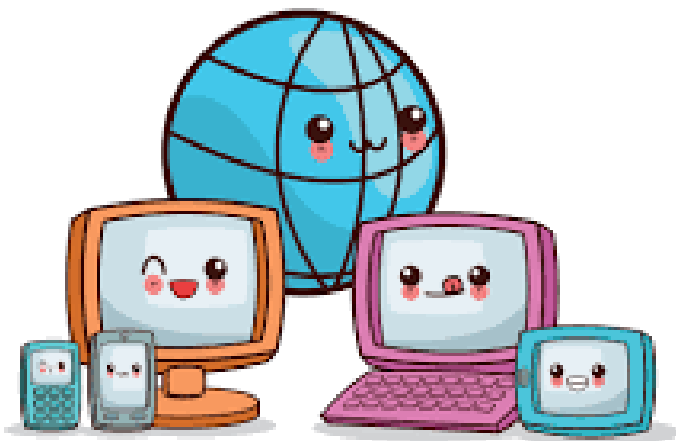
Lucas in Primary 7 has been reading a non-fiction book titled '100 Facts about T-Rexes'. He describes this book as fascinating and said the author is called Miles Kelly. Lucas said the book would be suitable for children aged 10 years and older. If you give the book a read, please let us know what you think!



Digital Update

We have been looking at using digital technology within the school to support pupils' progress in Literacy and Numeracy. After evaluation of school data, we have invested in Clicker 8 software which will be used across the school to support writing across the curriculum. Over the coming weeks, this software will be installed on to school devices for pupils to use and staff will be trained in using this within the classroom.

Digital Leaders will also work with Mrs Lamont to provide classes the opportunity to explore different digital tools and equipment.





Easy Fundraising

We are continuing to look for ways to raise funds for the school. You can help us by registering at **Easy Fundraising!** You simply go to www.easyfundraising.org.uk, register for a free account, and search for Mossend Primary School as your chosen cause to support. Then every time you do any shopping online, go to the Easy Fundraising website first, select the retailer you wish to shop with – then when you spend the school will receive a donation. It's that simple, and costs you nothing. Big retailers include Amazon and Argos, and major food retailers, such as Asda and Tesco. Please consider creating an account and supporting us today!

P7 Residential – Session 2025/2026

We are currently consulting our Primary 6 parents on a possible residential trip to Lockerbie next year. Parents have so far voted in favour of a 2 night/3 day residential trip and we are currently gathering pricing information. We will feedback to parents when this is complete.



Parent Council Area

Our next Parent Council meeting will take place on Monday the 27th of January at 6pm. This will take place online.

All parents are able to attend as part of the parent forum. If you would like to attend, please let us know and we can send you the link.



Parents Portal

As of August 2024, we are now completely paper and cash free in line with North Lanarkshire Council policy. All communication and money collections will be processed online via Parents Portal. This includes the completion of the annual data check, EV5 forms for school outings and photograph permissions. Currently, we have 88% of our school community signed up for Parents Portal, however it is necessary for **all** parents to be signed up. We would encourage you to access the following link and ensure that your account is set up.

<https://www.northlanarkshire.gov.uk/schools-and-learning/nl-digital-school/parents-portal>

If you are having any issues, signing up or accessing anything, please contact clerical staff at the school office.





P7 Leavers' Celebrations

We will shortly be consulting our Primary 7 pupils on what they would like to do as a celebration of their time here at Mossend. We will keep you posted with what they choose.

Primary 7 Nil By Mouth Workshops

Over the months of January and February, our Primary 7 pupils will engage with the Nil By Mouth charity and work alongside our friends at Holy Family Primary School to develop their knowledge on the negative impact Sectarianism can have on society. This will involve attending workshops in both schools and working together on a project.



Dates for your Diary

January

Monday 27th – Nursery – Blueberries
Target Setting

Monday 27th – Parent Council Meeting
online at 6pm

Wednesday 29th – Primary 1 Learning
Showcase at 1.45pm until 2.45pm

Thursday 30th – Nursery – Apples Target
Setting

February

Wednesday 5th – Nursery – Lemons
Target Setting

Thursday 6th – Nursery – Strawberries
Target Setting

Monday 10th – Nursery – Blueberries Stay
and Play at 8.50am until 9.50am

Tuesday 11th – P7s to attend Nil By
Mouth Workshops at Holy Family PS

Wednesday 12th – Nursery – Apples Stay
and Play at 8.50am until 9.50am

Thursday 13th – Nursery – Lemons Stay
and Play at 8.50am until 9.50am

Dates for your Diary

February

Thursday 14th – Nursery – Strawberries Stay and Play at 8.50am until 9.50am

Monday 17th – Mid Term Break

Tuesday 18th – Mid Term Break

Wednesday 19th – In Service Day (school closed to pupils)

Thursday 20th – Pupils to return to school

Wednesday 26th – P4/3 Vikings Parent Showcase at 2pm

Wednesday 26th – P7a trip to Sky Academy

Friday 28th – P5 and P6 trip to the Science Centre

March

Thursday 6th – Parent Consultation Evening

Wednesday 26th – P3 Daffodil Tea Parent Showcase at 2pm

April

Monday 7th – Spring/Easter holiday

Tuesday 22nd – Pupils to return to school

Dates for your Diary

April

Friday 25th – Photographer visit for
Nursery pupils only

May

Thursday 1st – P4/3 and P4 trip to the
Science Centre

Thursday 1st – P5 play at the park with
Holy Family PS

Monday 5th – May Day Holiday – school
closed

Tuesday 6th – In-service Day – school and
nursery closed to pupils

Thursday 8th – P4 play at the park with
Holy Family PS

Thursday 15th – P3 play at the park with
Holy Family PS

Wednesday 21st – New Primary 1
Enrolment – Parent Information Session at
9.15am

Thursday 22nd – P2 play at the park with
Holy Family PS

Friday 23rd – May Weekend – School and
Nursery closed

Dates for your Diary

May

Monday 26th – May Weekend – School and Nursery closed

Thursday 29th – Parent Consultation Evening

June

Tuesday 3rd – P6/P7 Football Tournament with Holy Family

Wednesday 4th – New Primary 1 Enrolment – School Parent and Child Lunch Visit at 11.15am

Tuesday 10th – Sports Day

Tuesday 17th – P4 Parent Showcase (am)

Friday 20th – Nursery Graduation at 10am

Monday 23rd – End of Term Service at 10am

Wednesday 25th – School closes at 1pm

Please note that dates for the diary are subject to change. Any changes will be communicated as and when required.

Contact Details

Website: www.mossend.n-lanark.sch.uk

Email: enquiries-at-mossend@northlan.gov.uk

Telephone: 01698 274905



@MossendPS



We are a **Reading School**

