

# MOSSEND PS & NC

## Newsletter

---

September 2024

Dear Parents/Carers,

I wish you and your families a warm welcome back to our school and nursery class for session 24–25. It's great to get some routine back again too!

This newsletter will outline some of the priorities we will be focusing on in the coming weeks and we will continue to share our work and build on our progress each month with you. We hope you enjoy reading all about them.

As the 'Named Person' for all the children in the school, please contact me directly if you have any worries or concerns about any child. There is nothing more important to us than the care and protection of each child. The role of the named person has been discussed with children during our assemblies.

If you have queries about any aspect of the school's work, please contact us.

Yours sincerely,

Tracey McCulloch

Head Teacher



### Establishment Improvement Planning Session 2024/2025

Following last session's consultation and evaluation, our improvement priorities for the forthcoming session are below. A copy of our progress report from last year can now be viewed on our website.

Cluster Priority 1:	By the end of session 2024/25 all school staff will have an increased knowledge of their corporate parenting responsibilities and almost all schools will have achieved the national Keeping the Promise Award (We Promise level) having a positive impact on GIRFEC Planning.
Cluster Priority 2:	By the end of session 2024/2025, all learners will benefit from a more inclusive approach to improve health and wellbeing, with identified learners accessing additional and intensive cluster supports to address the equity gap.
Establishment Priority 1:	All learners will benefit from high quality approaches to learning and teaching with a focus on effective pedagogy, as evidenced in improved attainment over time in Literacy and Numeracy.
Establishment Priority 2:	<i>By June 2025, all learners will demonstrate increased engagement in school life through curricular experiences which support joyful learning, build confidence and equip every child to be successful and to contribute in their life, work, and world.</i>
Establishment Priority 3:	By March 2025, all staff will have increased their understanding of potential barriers faced by learners and all learners will benefit from improved emotional wellbeing.

## Birthdays

A big 'happy birthday' to the following school children who celebrate their birthdays in September: Eli, Katie, Marlie, Azhar, Sophia, Harrison, Lara, Ivy, Cole, Zachary, Jude, Lucy, Emna, Jacob, Sapphire, Charlotte, William, Hayley, Lana, Anna, Jessica, Amara, Reeva, Sarah, Olivia, Amy, Brodie, Jake, Adam, Dorka, Thomas, Reece, Archie and Harris.

And also, to the following nursery children who celebrated their birthday in August; Ewan and Mason.

Your Mossend friends hope you all had a very special day, and if your special day is still to come... have a great one!



## Staff Updates

We are delighted to welcome some new members to our staff team for this session. Miss Laura Mathers joins our teaching team this year, alongside Mr Michael McMullan who has been with us previously. Miss Jemma Dickson and Miss Emma-Jane Cross have also joined us as permanent members of our Nursery Class Team. We wish them all lots of happiness here at Mossend.

Following interview, Mrs Hannah Smith has been appointed permanent Principal Teacher (O.4), huge congratulations to her. Mrs Smith is on a role with her good news as she is also expecting a wee baby in December of this year. Mrs Smith will begin her maternity leave in late November of this year.





### Attendance and Lateness

Attendance continues to be a strong priority across our authority, and nationally. At Mossend PS we are monitoring attendance closely, and working alongside partner agencies to support families in improving this.

There is a direct link between attendance and attainment and we cannot stress the importance of good attendance for your children.

We would be grateful if you could ensure that your child arrives at school for their start time so they do not miss key teaching and learning.

If you are needing to report pupil absence, this can be done via Parents Portal. If you are planning to phone the school, please call after 8.15am as the office is not staffed until 8.15am.

### School Uniform for Session 2024/2025

We would like to say a huge thank you to our families for once again supporting our uniform policy. We are so proud of how smart the children look with almost all children wearing the appropriate uniform each day. A reminder of our uniform policy:

#### **Formal Uniform**

- Royal blue jumpers and cardigans (school branding optional)
- White shirt and tie
- Grey trousers/pinafores/skirts
- Blue Tartan pinafores/skirts

#### **PE Kit**

- Royal blue hoodie or jumper
- White t-shirt/polo shirt
- Black leggings, shorts or joggers

Children will be permitted to come to school wearing their PE Kit on gym days (twice per week) as long as they are in correct formal school uniform on the other 3 days

#### **Nursery Uniform (Uniform is not compulsory for nursery children)**

Royal blue polo shirt and sweatshirt or own clothes.



## Management Team Contacts – Pastoral Care Remits

If you have any questions or queries about your child, please speak with your child's class teacher first. Please note that teachers should not be approached in the school playground when they are attempting to welcome or dismiss their children. Please call the school office where a telephone call or appointment will be made for you. See below for a note of the relevant management team staff member with pastoral responsibility for each stage:

Nursery Class - P1 Mrs Brownlie/Mrs McCulloch

P2, P3/2, P3 and P4/3 Mrs Smith/Mrs McCulloch

P4, P5/4 and P6/5 Mrs Lamont/Mrs McCulloch

P5, P6 and P7s Mrs Cole/Mrs McCulloch

The management team will soon contact families of any child who has a GIRFME Plan to arrange our first review meetings of this academic year.



## Water Bottles

Since the implementation of the Single Use Plastics Ban (2022), we are unable to provide pupils with plastic cups throughout the school day for a drink of water.

Please ensure your child comes to school with a water bottle.

Pupils will have access to water throughout the school day to fill up their bottles.





### Appointments (Reminder)

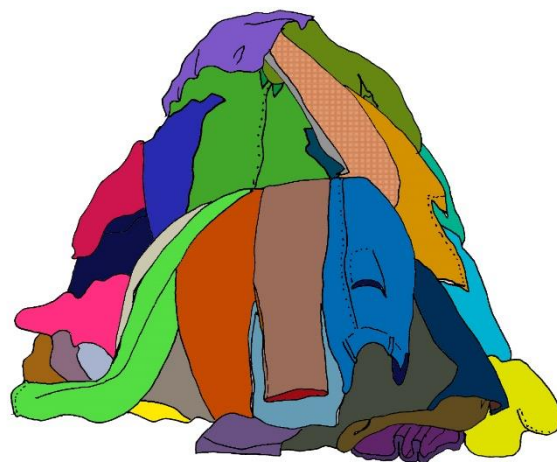
Where possible, appointments should be made out with the school day. If this is not possible then an appointment letter should be produced in advance of when your child needs to be excused from class time. Please call in advance and inform us of appointments.

We have an increasing number of children with afternoon appointments, particularly on a Friday. This can be disruptive to learning, and to the running of the school through unplanned office interruptions at busy times.

We appreciate your understanding with this.

### Clothing

Can you please ensure that all clothing is labelled with your child's full name as this would reduce the amount of 'lost' property we have. All unclaimed uniform will be recycled and sent to charity at the end of every month.



## Health and Wellbeing

The wellbeing needs of every individual child is of paramount importance to us as a school community as we aim to meet the national approach in Scotland of Getting It Right for Every Child (GIRFEC). The Scottish Government has described wellbeing in terms of eight indicators, which are, Safe, Healthy, Achieving, Nurtured, Active, Respected, Responsible and Included. These are sometimes abbreviated to the acronym known as SHANARRI.

Over the next month, as a school, we will be focusing on the 'Safe' indicator. Through our weekly assemblies and class lessons we will be exploring how to keep ourselves and others safe, how to assess risk and the senior classes will look at what peer pressure and influencers are.

## Health Plans

Mrs Brownlie will be in contact with all parents/carers to update current Health Plans. If you feel your child requires a Health Plan, please call the school to arrange a meeting.



## Mossend Nursery Class

We have made some changes to how we collect the Toy/Snack Fund. We kindly ask for donations of £2 per week.

Pupils in the nursery have been learning all about themselves and their families since returning in August.

Parents have been invited in to meet with their child's key worker/practitioner for a 28 day review and to assist in setting targets for their child.

These meeting will take place as follows:

Tuesday 3<sup>rd</sup> September – Apples' meetings

Wednesday 4<sup>th</sup> September – Blueberries' meetings

Thursday 5<sup>th</sup> September – Lemons' meetings

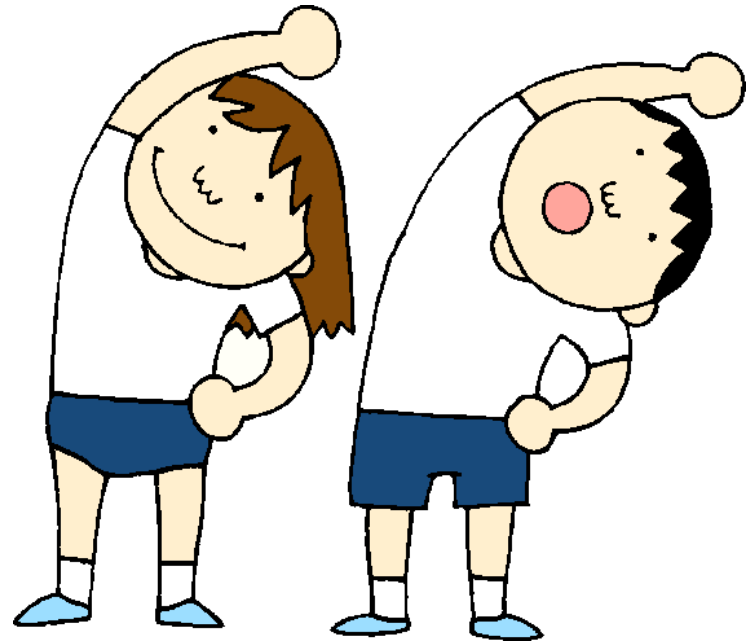
Friday 6<sup>th</sup> September – Strawberries' meetings



### Physical Education (Reminder)

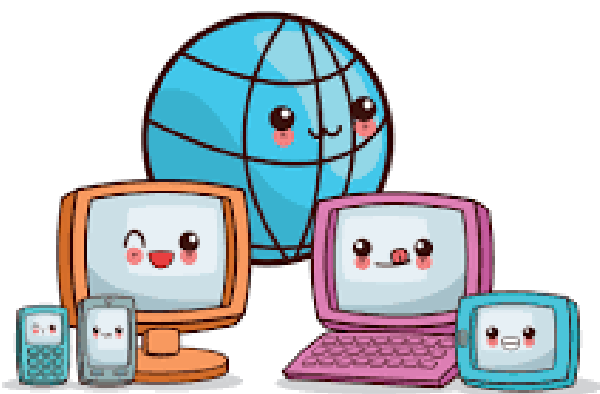
We continue to ensure that our children receive their 2 hour entitlement of physical education each week. This comprises of 1 hour of indoor PE, and 1 hour of outdoor PE. On these days we would appreciate your support in ensuring that long hair is tied back, jewellery is removed, and children have their water bottles with them.

In relation to new piercings, these must be covered with a plaster either prior to coming to school, or children need to apply themselves in school. This is in accordance with NLC guidelines to ensure that children can access their entitlement safely.



### Digital Update

As we begin the new session, Mrs Lamont is looking to recruit Digital Leaders to help embed digital technologies across the school. Pupils in Primary 4 to Primary 7 can apply for the role by filling in an application form. These forms have been offered out to the classes and should be returned to Mrs Lamont no later than **Friday the 6<sup>th</sup> of September**. Mrs Lamont is looking to introduce an updated Digital Policy in the school and is looking for parent/carer volunteers to review this policy with Mrs Lamont. If you would like to participate in this review session on **Wednesday the 4<sup>th</sup> of September** from 2pm until 2.30pm, and would be available, please contact the school office.







**Support us through  
easyfundraising**

### Parent Council Area

Our Parent Council AGM will be held on Monday 16<sup>th</sup> September at 4:45pm, in school. If you would be interested in joining our Parent Council, or in finding out more, then please send an e-mail to [enquiries-at-mossend@northlan.gov.uk](mailto:enquiries-at-mossend@northlan.gov.uk). The work of our Parent Council is invaluable in supporting the development of our school and we are so grateful to the active and committed members that we have here at Mossend. We have several vacancies on our Parent Council.

### Easy Fundraising

We are continuing to look for ways to raise funds for the school. You can help us by registering at **Easy Fundraising!** You simply go to [www.easyfundraising.org.uk](http://www.easyfundraising.org.uk), register for a free account, and search for Mossend Primary School as your chosen cause to support. Then every time you do any shopping online, go to the Easy Fundraising website first, select the retailer you wish to shop with – then when you spend the school will receive a donation. It's that simple, and costs you nothing. Big retailers include Amazon and Argos, and major food retailers, such as Asda and Tesco. Please consider creating an account and supporting us today!



We are a  
**Reading  
School**



## Reading Schools

We are very proud to announce that we finished up last session having achieved our Silver Reading Schools Award. Thank you to all the pupils, staff, parents and community members in helping us achieving this!

As we continue on our Reading Schools journey towards the Gold award, we are looking at arranging a number of fun reading events across the school this coming session.



We are a **Reading School**



## Mobile Phones

We have discussed our mobile phone procedures with the children during this week's assemblies. Please see below for a reminder of these procedures:

- In the first instance, we would prefer if all children could avoid bringing mobile phones to school where possible.
- If a child does need to bring a phone to school then this must be switched off as they enter the school grounds.
- All phones will be collected by the class teacher during morning registration and stored throughout the day in the school office.
- Phones will be returned to children just before the end of the school day.
- Phones can be turned on again when the children exit the school grounds.





## Administering Medicine

### Inhalers

If your child requires an inhaler in school, this must be kept at the school office so appropriate records can be kept when administering medication. Please send in the most recent Asthma Plan for your child to ensure records are up to date.

### Medication

If your child requires any medication in school, you are required to complete the relevant paperwork. Medication should be brought to the main office by the parent/carer and the relevant paperwork should be completed at this time.

## Parents Portal

As of August 2024, we are now completely paper and cash free in line with North Lanarkshire Council policy. All communication and money collections will be processed online via Parents Portal. This includes the completion of the annual data check, EV5 forms for school outings and photograph permissions. Currently, we have 79% of our school community signed up for Parents Portal, however it is necessary for **all** parents to be signed up. We would encourage you to access the following link and ensure that your account is set up.

<https://www.northlanarkshire.gov.uk/schools-and-learning/nl-digital-school/parents-portal>



We are a

**Reading**  
**School**

The logo for Reading School features the words 'Reading' and 'School' in a bold, black, sans-serif font. The word 'Reading' is on the top line and 'School' is on the bottom line. On either side of the text are several colorful books (yellow, green, blue, red) standing upright.

## Primary 7's Great Mossend Bake Off

Primary 7 will be hosting our annual 'Great Mossend Bake Off' on Thursday the 26<sup>th</sup> of September to coincide with the MacMillan Coffee Morning. All profits made will be split between MacMillan Cancer Support and Primary 7 activities throughout the year. Tickets will be priced at £2 each and are limited to 2 per P7 child. These will be sold via Ipay Impact on a first come, first served basis from Monday the 16<sup>th</sup> of September. More to follow.

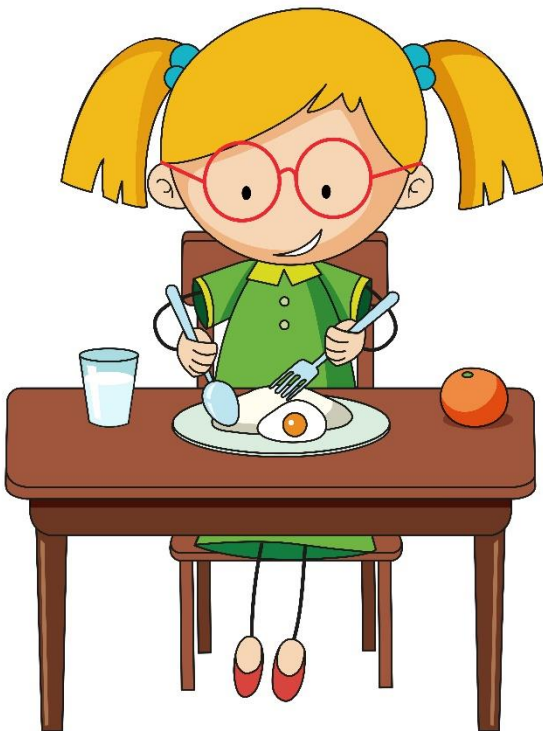


## Breakfast Club/School Dining Room

Breakfast Club is open to all children from 8.15am. This costs £1 but is free to all children in P1 – P5, and for any child with Free School Meal Entitlement. Please note that children should only attend if they require breakfast service.

Playground supervision for children not attending breakfast club begins at 8.45am. Children should avoid entering school grounds until this time and arrive as close to their entry time as possible.

Do you know that school meals are now free for all children in P1 – P5? Each day there is a good selection of hot and cold options on offer. The menu for the school dinner hall can be accessed on North Lanarkshire's website, however, Mossend staff will tweet the menu each Sunday night which will allow you to review the options for the week ahead with your child.



Dates for your Diary

**September**

Tuesday 3<sup>rd</sup> – Nursery Apples' target meetings

Wednesday 4<sup>th</sup> – Nursery Blueberries' target meetings

Wednesday 4<sup>th</sup> – Digital Policy Review session with Mrs Lamont and Parents

Thursday 5<sup>th</sup> – Nursery Lemons' target meetings

Friday 6<sup>th</sup> – Nursery Strawberries' target meetings

Friday 6<sup>th</sup> – Digital Leader Applications Deadline

Monday 16<sup>th</sup> – Parent Council AGM at 4.45pm in school

Wednesday 18<sup>th</sup> – Primary 1 Come and Learn Literacy at 10am. More information to follow

Thursday 19<sup>th</sup> – Photographer in school

Thursday 26<sup>th</sup> – Primary 7's Great Mossend Bake Off

---

---

---

---

---

---

---

---

---

---

---

---

---

---

---

---

---

---

---

---

---

---

---



## Contact Details

Website: [www.mossend.n-lanark.sch.uk](http://www.mossend.n-lanark.sch.uk)

Email: [enquiries-at-mossend@northlan.gov.uk](mailto:enquiries-at-mossend@northlan.gov.uk)

Telephone: 01698 274905



@MossendPS

