



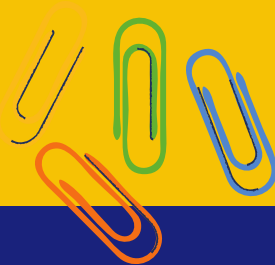
PARENT AND CARER UPDATED INFORMATION

MOSSEND PRIMARY SCHOOL AND NURSERY CLASS

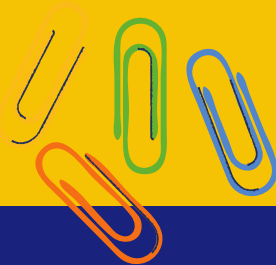


If you are not receiving emails from us please contact us at:

enquiries@mossend.n-lanark.sch.uk to allow us to update our systems and keep you in the loop with what is happening at Mossend Primary School and Nursery Class.



WEEK 4 UPDATE MONDAY 31st AUGUST 2020



PRIMARY 1 START TIME

From Monday our P1 children are invited to make use of our drop and go facility from 8:45am. This only works if parents/carers leave after dropping their children off, the pavements are too narrow to wait and you will block the safe drop off for other families. **Children should not be dropped off any earlier than 8:45am, as there is no playground supervision.**



If you feel your child is not quite ready for this or you are not comfortable with it yet, **then wait until the 9am bell** and your child can meet their teacher to enter the building.



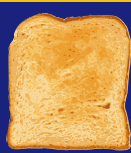
WET MORNINGS

During wet mornings the drop and go is still operating from 8:45am, but we would ask that children are dropped off as close to 9am as possible to avoid them waiting outside for a prolonged period of time.

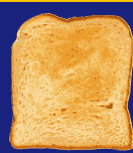


We understand that not everyone is comfortable with the children waiting outdoors when raining, however we cannot accommodate our size of school safely in the hall under current risk assessments. Furthermore, we do not have the staffing to accommodate children in classrooms or smaller groups anywhere else until 9am. Some of our staff are already voluntarily starting at 8:45am to accommodate the drop and go option and even in the wet mornings they will be outside to supervise your children.

During interval and lunchtime a decision will be made on the extent of the weather and children may be able to remain inside as appropriate staffing is available, **however children should always come to school dressed appropriately** for the weather as we are trying our best to have children outdoors as much as possible where it has been proven that the risk of virus transmission is greatly reduced.



BREAKFAST AND SNACKS



Good News! Mrs Cook has kindly agreed to operate our breakfast from 8:15am starting from Monday. Please note that at this time all children who attend will be kept in the canteen until 9am and that we are no longer selling snacks at interval during the current period.

POLITE REMINDER

A polite reminder that parents should not be blocking the narrow pavements around our school. We are still receiving a high number of complaints from families who are struggling to drop their children off safely in the mornings due to inconsideration from other parents/carers. If you are using the drop and go option then please comply with the rules, otherwise wait until 9am before dropping your child off.

Similarly, P1-3 children who are picking up from the playground at 2:50pm should vacate the playground as soon as they have their children. P4-7 parents/carers should not be in the playground. Thank you for helping to keep everyone safe.



NURSERY CLASS UPDATE



We are delighted to be able to offer 1140 hours for nursery children Monday, communication has been sent to current nursery families already. The statutory requirement is 600 hours, but North Lanarkshire Council recognise the benefits these additional hours will bring to families in our community.

Please note that on Monday 31st August the lunch for nursery children will be a mixture of sandwiches to accommodate this change.

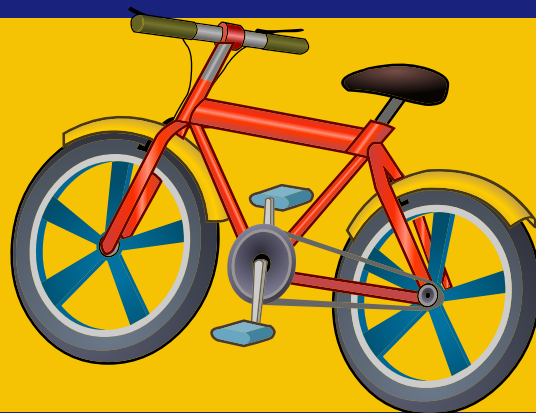
DIGITAL TECHNOLOGY

To keep the momentum that was built up over lockdown for digital technology, your child will shortly be added to a Microsoft Team for their class.

The class teachers will use this to issue home learning, with the expectation that pupils would return it for marking digitally and avoid paper being transported. In the world we now live in, the use of digital technology is increasing rapidly and we need to continue to equip our children with the skills they need for learning, life and work.

Mr Reid is not in class this year as he has been given the remit of leading digital technology and is working to create content for North Lanarkshire's new Digital School. The Digital School will provide work for children who are self isolating at home and should we ever change to a blended learning model in the future.

#Effectivecontributors



BIKES AND SCOOTERS

It is great to see more children cycling to school and making use of the bike railings at the front of the building. We are actively encouraging this as a healthy alternative to car journeys and we hope that it continues throughout this school session.

However, we would strongly recommend that all bikes and scooters are chained to the railings provided as these are not monitored throughout the day and we cannot take any responsibility for any property left unattended.

RESPECT OUR STAFF

We understand that things are very different just now and when it comes to your child emotions can run high, however we have a duty to comply with current legislation and risk assessments.

Our staff are professionals and have worked hard to settle your children back into routines and new ways of learning, therefore we have a zero tolerance approach to any form of physical or verbal abuse, including intimidation, aggression or disrespectful behaviour on social media. **We are now only using Twitter to share news, but will not respond to enquiries or private messages online.**

OUTDOOR PE



You should have received your child's PE days and a reminder that children should come to school in their kit. Please note that the kit described is only advised, **please use your own parental judgement based on the weather.** No football teams or colours and leave jewellery at home.

Teaching staff are professionals and as such they will use their professional judgement on if the weather is suitable for the planned activity.

COMMUNICATION

If you wish to discuss anything with your child's teacher directly you now have the option of emailing enquiries@mossend.n-lanark.sch.uk and marking it for their attention. **Please do not email the Head Teacher email address as no replies will be given**, there is a clear communication process in place.

Please allow a few days for a response as it may not be immediate and should not be expected before 9am, after 5pm, at the weekend or holidays. Responses may be in the form of a telephone call.

Class teachers will also be using their app page to provide you with class specific newsletters shortly.

Where Stars Shine Brighter

