

MOSSEND P.S

RETURN TO SCHOOL

AUGUST 2020

UNIFORM

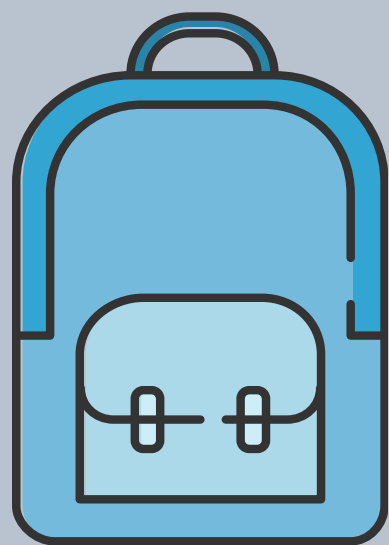
Children should continue to wear their full uniform including white shirt, tie and grey trousers/skirt.

Ties should be worn if your child is confident putting it on independently. Easy fasten shoes are also advised if your child cannot tie shoe laces independently. Blazers can also be worn. Shared cloakrooms will not be in use so blazers/jackets will go over your child's chair in the classroom.

PLEASE ENSURE ALL BELONGINGS ARE CLEARLY LABELLED WITH YOUR CHILD'S NAME.



BELONGINGS



All children will be issued with their own resource pack containing all necessary stationery items. Children may bring a snack and filled water bottles - school bags can be used for the transportation of these items but transportation of items between school and home will be kept to an absolute minimum to avoid cross contamination. Toys should not be brought to school and children should avoid sharing items with others.

Please note - **no communal water coolers will be in use** at present to re-fill water bottles so children should ensure they bring plenty of water to school.

LUNCHES

Our canteen will continue to provide lunches, however, there will be a reduced menu. Children may bring packed lunch boxes to school but it may be a good idea to bring packed lunches in disposable bags to minimise items going from home to school.

We ask that parents **do not** collect children for home lunches.

It's important that as much cash handling as possible is removed from the system. Cashless payment is available through the iPay Impact system. Please follow the link for more information:

<https://www.northlanarkshire.gov.uk/index.aspx?articleid=35066>

ATTENDANCE



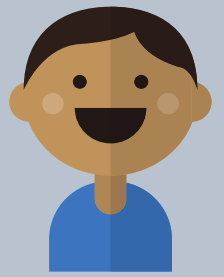
Schools across North Lanarkshire will return from Wednesday 12th August. There will be a phased return until Friday 14th August in order to allow pupils to familiarise themselves with new routines, changes to buildings and hygiene measures.

The phased return for Mossend pupils is detailed below:



Primary 1 Children

Wednesday 12th August, Thursday 13th August & Friday 14th August



Primary 2 & 3 Children

Wednesday 12th August & Friday 14th August

Primary 4-7 Children

Thursday 13th August & Friday 14th August

**For the phased return, specific start times will be communicated directly to P1 parents/carers. All other stages should refer to staggered timings as detailed below* In line with new Government Guidance, some class structures have been changed. We will be in contact directly with those affected.*

STAGGERED TIMINGS

As previously communicated we will have staggered start and finishing times. Children **must** arrive at their start time.

Block 1: Rooms 1,2,3,10,11,12 will start at 8.45am and finish at 2.45pm with relevant breaks in between. These children should arrive at 8.45am. (Primary 1 this start time will be from 17th Aug)

Block 2: Rooms 4,5,6,14 and 15 will start at 8.55am and finish at 2.55pm with relevant breaks in between.

Block 3: Rooms 16, 17, 18, 19 and 20 will start at 9.05am and line up in their class at the back of the playground.

We have deliberately chosen the older children to start last as they are more independent and are able to line up with minimal adult intervention.

Breaks and Lunch Times

Your child's day will be split into four blocks of learning. There will be a 15 minute break in the morning, 30 minutes for lunch and a further 15 minute break in the afternoon.

Block 1 will eat their lunch at 11.45am

Block 2 will eat their lunch at 12.15pm

Block 3 will eat their lunch at 12.45pm

SCHOOL ENTRY

Entry and exit points will remain the same as was communicated in our last update. For children and families who normally use the main gate at Calder Road - please continue to do so. This is called **Zone One**.

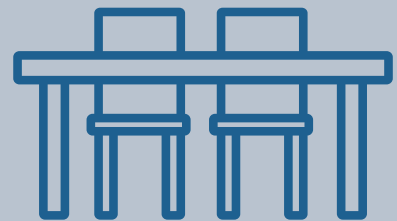
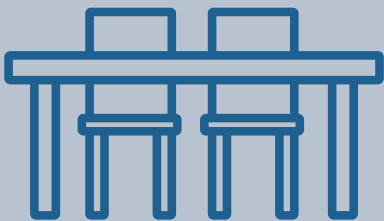
For children and families who use the car park or live in the direction of Clydesdale Road, you should now use the middle gate on Clydesdale Road at the traffic lights. This is called **Zone Two**.

Children will be escorted to the main playground via the infant playground and will either line up accordingly or enter immediately depending on their start time.

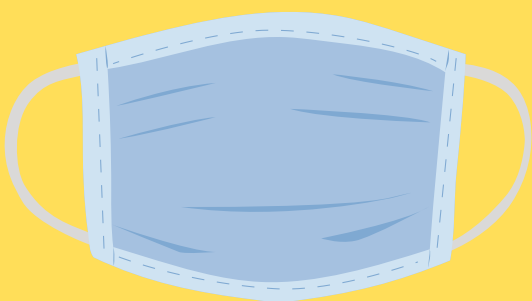
To allow adults to socially distance your child will be lined up and given a number for collection. It is important that you line up in this order to collect your child at the end of the day to minimise congestion and we would ask you to move away as soon as you have collected your child.

CLASSROOMS

There is no requirement for physical distancing between children in primary schools therefore children will be able to sit next to each other without a 2m distance. It has been recommended that pupils sit facing forward, side by side, and not facing each other. Where feasible, pupils will be kept in groups for the duration of the school day. Adults do still need to physically distance from other adults and children so staff will have 'zones' within each class where they will base themselves. Movement around the classroom for children will be discouraged. Furniture and materials within classes have been limited to support good hygiene and limit transfer of germs.



FACE COVERINGS

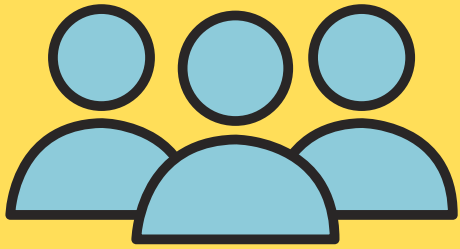


It is unlikely that staff will wear face coverings in school. Where adults cannot keep a 2m distance and are interacting face-to-face for a sustained period (about 15 minutes or more), face coverings are advised to be worn. Anyone in school wishing to wear a face mask is able to do so but they are not required for most children.

UNFORTUNATELY, DUE TO SOCIAL DISTANCING RULES, **PARENTS WILL BE UNABLE** TO ENTER THE SCHOOL GROUNDS BUT PLEASE BE ASSURED THAT STAFF WILL BE IN EACH ZONE TO WELCOME THE CHILDREN.

ASSEMBLIES/PE

Assemblies and large group gatherings will be avoided. Smaller groups may come together at various times but this will be limited.



Choirs, orchestras, drama and indoor PE **will not** be reintroduced until Scottish Government guidance allows, therefore all PE will take place outdoors, weather permitting.

Class teachers will communicate PE days and any specific requirements.

HYGIENE

Thorough hand washing procedures will be in place and where it is not possible to wash hands, children will be asked to use sanitiser.

Children will sanitise their hands on entry to the building using newly fitted wall mounted stations. Children will be encouraged to wash their hands frequently with soap and warm water for 20 seconds during breaks, after meals, after using the toilet and at other points during the day.

There will be enhanced cleaning procedures in place throughout the school day to ensure high standards of hygiene and cleanliness are maintained. An enhanced daily cleaning regime is in place, with a focus on touch points, surfaces, equipment and ventilation. This will mean that cleaning staff will focus on touch points during the day as well as at the end of the day.

PARENTS VISITING SCHOOL

In general, parents will be unable to visit the school. There may be some exceptional circumstances where you will be asked to enter the school but this will be very unusual. Unfortunately, this includes parents of Primary 1 pupils but please be assured that we will do everything we can to make sure your child is comfortable in their new surroundings. If you do need to visit the school, please wear a face covering and you will be asked to provide contact and time details on entry and exit to support Test and Protect arrangements.

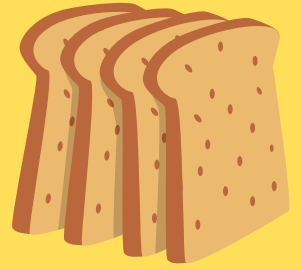
AFTER SCHOOL CLUBS

We usually run an extensive after school club programme, however in the interests of safety and minimising contact between children and adults from different classes, clubs will be postponed until further notice.

BREAKFAST CLUB

We are currently waiting on information to be confirmed regarding our Breakfast club.

We will be in touch with more information as soon as it has been confirmed.



SIGNAGE

Our school looks quite different to assist with the flow of pupils around the building and allow space for physical distancing between staff. Signage is in place to indicate direction of travel and a 'keep left' policy is in place in corridors and stairs. A partial one way system is in place in order to ease congestion.

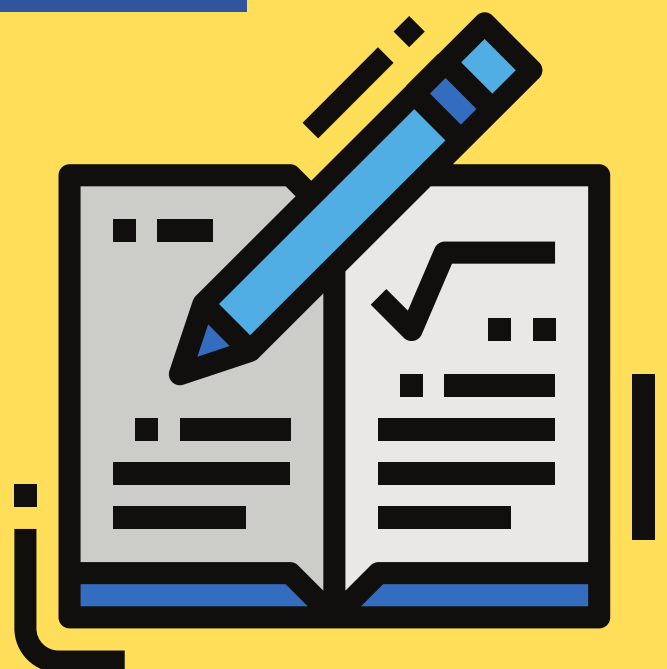
There will be different entrance and exit points that will be clearly marked and zoning will be in place if required for different classes or year groups. Staff will go through all new procedures to ensure children know their designated spaces for lining up, playing and entering/ exiting the building.



HOMEWORK

At this time, we will not be issuing or collecting any physical homework.

Our staff team has been working hard to update existing homework policies. We will move towards the use of Microsoft Teams for issuing and collecting homework in the near future.



OUTDOOR SPACES

As children are going to be outdoors more regularly we would ask that your child is dressed appropriately for the weather.

ILLNESS AT HOME

If children or someone in their household exhibits COVID-19 symptoms, they should not attend school but instead should self-isolate (along with their household) and follow guidance on NHS Inform and from Test and Protect.

The most common symptoms are:

- new continuous cough
- fever/high temperature
- loss of, or change in, sense of smell or taste

ILLNESS IN SCHOOL

Children should inform a member of staff if they are feeling unwell or displaying symptoms of Covid-19. Parents/carers will be contacted and asked to make arrangements to pick up their child from school (preferably this should be another adult member of their household and not a grandparent) and follow the national guidance for households with possible COVID-19 infection including testing and self-isolation. A safe space has been allocated where children who are displaying symptoms are able to wait with an adult until their parent/carer arrives.



We hope that this helps to ease any anxieties that you may have had about the school re-opening. If you require further assistance, please visit the FAQs section on the North Lanarkshire Council website at <https://www.northlanarkshire.gov.uk/index.aspx?articleid=35006>

If you are unable to find the answer required, please email us through:

enquiries@mossend.n-lanark.sch.uk

We will continue to post any updates on the school app, Twitter and our website, so remember to look out for these.

Our staffing has now been confirmed and all class information will be sent out via email on Tuesday when our office staff return to school.

We are all looking forward to welcoming all the children back to school.

This guidance was created with the most up to date information as of 7th August 2020. We thank you for your continued support and patience through these unprecedented times and we will keep you up to date of any changes that will be made.

