

## **Statutory Consultation**

**Proposal to vary the arrangements for transfer of pupils at Kirk O'Shotts Primary School from Caldervale High School to Calderhead High School by changing the catchment areas of Calderhead High School and Caldervale High School**

**EDUCATION, YOUTH AND COMMUNITIES**



## Index

<b>Section</b>	<b>Page</b>
1. Introduction	3
2. Consultation Requirements	4
3. Proposal	5
4. Educational Benefits Statement	5
5. Community Impact Statement	6
6. Financial Implications	7
7. Equality impact assessment	8
8. Inaccuracies or Omissions	8
9. The statutory consultation process – additional information	8
Appendix 1 – Current catchment area Caldervale High School	11
Appendix 2 – Proposed catchment area of Caldervale High School	11
Appendix 3 – Current catchment area of Calderhead High School	12
Appendix 4 – Proposed catchment area of Calderhead High School	12
Appendix 5 – Consultation Timeline	13
Appendix 6 - Consultation Response Form	14

## NORTH LANARKSHIRE COUNCIL: EDUCATION, YOUTH AND COMMUNITIES

### **Proposal to vary the arrangements for transfer of pupils at Kirk O'Shotts Primary School from Caldervale High School to Calderhead High School by changing the catchment areas of Calderhead High School and Caldervale High School**

#### **1 INTRODUCTION**

- 1.1 School catchment areas define which primary and secondary school each residential property in North Lanarkshire is aligned to.
- 1.2 Primary and Secondary school associations are historical in nature with most of the current catchment arrangements being in place long before the formation of North Lanarkshire Council. This is the case for the area outlined in this proposal.
- 1.3 The catchment area of Kirk O' Shotts Primary school includes the semi-rural village of Salsburgh and surrounding greenbelt farmland. The closest major towns to the village are Shotts to the South East and Airdrie to the North West.
- 1.4 The distance from Kirk O' Shotts Primary School to Caldervale High School is approximately 4.5 miles. The distance from Kirk O' Shotts Primary School to Calderhead High School is approximately 3.5 miles.
- 1.5 The proposal will change the link from the primary school with the Airdrie area (Caldervale High School) and strengthen the link with the Shotts area (Calderhead High School).
- 1.6 This proposal will see primary school pupils in the area transfer to non-denominational provision in the town closer to the village and with which the area has close associations.

#### **2 CONSULTATION REQUIREMENTS**

- 2.1 In terms of the Schools (Consultation) (Scotland) Act 2010, the Education Authority is required to publish details of, and consult on, any proposal to change the catchment area of any school or any proposal to vary the arrangements for the transfer of pupils from primary to secondary school.
- 2.2 North Lanarkshire Council will not make any decision, or put any changes into effect, until the consultation period has been concluded in line with statutory requirements.
- 2.3 The consultation period will be a total of 45 days, which includes 30 school days excluding one in-service day. It begins on Wednesday 10<sup>th</sup> January 2018 and concludes on Friday 23<sup>rd</sup> February 2018.
- 2.4 The consultation will involve pupils, parents/carers, Parent Councils and staff of the schools involved as well as other associated stakeholders and statutory consultees as detailed in section 9.
- 2.5 A public meeting to discuss the proposal will be held in:  
**Kirk O'Shotts Primary School at 7pm on Tuesday 23<sup>rd</sup> January 2018.**

- 2.6 Council officers will be present at the public meetings to discuss the proposal and there will be an opportunity to ask questions. It is appreciated, however that there is a limited time at the meetings to discuss everything fully and not everyone is comfortable with speaking publicly. To make sure that all issues are covered advanced notice of specific questions or issues to be raised will be accepted in writing only up to two days in advance of the meetings; see contact details at 2.9.
- 2.7 At the end of the consultation process, a report will be prepared for North Lanarkshire Council detailing all responses received, summaries of their content and a statement from HMIE on the educational aspects of the proposal. An officer response to the issues raised through the consultation will also be incorporated in the report. Copies of the report will be available, prior to consideration by the council, in both schools, local libraries and online. It is envisaged that the report will be published on 13<sup>th</sup> April 2018. The Key dates are set out in Appendix 5.
- 2.8 An online version of the documents and other items related to the consultation can be found online <http://www.northlanarkshire.gov.uk/index.aspx?articleid=1164>
- 2.9 Further information on the proposal can be obtained by writing to School Consultations, Education, Youth and Communities, Municipal Buildings, Kildonan Street, Coatbridge ML5 3BT. Tel 01236 812596 or by emailing school consultation [kirkoshottsconsultation@northlan.gov.uk](mailto:kirkoshottsconsultation@northlan.gov.uk)
- 2.10 All interested parties are invited to submit their comments on or before Friday 23<sup>rd</sup> February 2018

### **3. PROPOSAL**

- 3.1 The proposal in this document is to change the arrangements for the transfer of pupils from a primary school to a secondary school and to realign the catchment areas of two high schools.

The specific proposals are:

- (1) To change the aligned secondary school in relation to the transfer of pupils from Kirk O'Shotts Primary School. This would discontinue the transfer of pupils to Caldervale High School and introduce automatic transfer to Calderhead High School from August 2018.
- (2) To alter the catchment area for Calderhead High School to include the catchment area for Kirk O' Shotts Primary School from August 2018.
- (3) To alter the catchment area for Caldervale High School to remove the catchment area for Kirk O' Shotts Primary School from August 2018.

The appendices at the end of this consultation paper include maps showing current and proposed catchment areas for each of the schools.

- 3.2 The rationale behind this proposal is the geographical association of the Kirk O' Shotts Primary School catchment area to the Wishaw Local Area. Wishaw is located in the south area of North Lanarkshire. Currently, the school is aligned with the Airdrie Local Area. Airdrie is located within the central area of North Lanarkshire. If implemented, the proposal will meet the aspiration of the community of Kirk O'Shotts for alignment of the primary school with Calderhead High School.

#### **4 EDUCATIONAL BENEFITS STATEMENT**

- 4.1 The schools affected by this proposal will be Kirk O'Shotts Primary School, Caldervale High School and Calderhead High School. It is not foreseen that any other school will be affected.
- 4.2 The proposal, as outlined in section 3 of this document, would change the aligned secondary school for Kirk O'Shotts Primary from Caldervale High School in Airdrie to Calderhead High School in Shotts. This will align Kirk O'Shotts Primary with the secondary school in its natural hinterland of Shotts.
- 4.1 The proposal to vary the arrangements for the transfer of pupils from Kirk O' Shotts to an alternative secondary (Calderhead High School) has educational benefits for all children, staff, parents and the wider community. The benefits for all learners and families are centred on improvements that will be gained from linking the learning environment with opportunities for learning and teaching, coupled with opportunities to capitalise and develop further links with the local community. There are further specific benefits for both achievement and attainment across all four contexts for learning by engaging with Local Area Partnerships to further develop young people's awareness and appreciation of the community in which they live.
- 4.2 Calderhead High School continues to successfully develop links with the community of Shotts. The leadership and staff of the school have made considerable efforts to engage with local families in order to further develop shared understanding of the impact that good partnerships between parents and school can have on the development of the whole pupil. This benefits the whole community and parents of pupils in Kirk O' Shotts primary would have a better opportunity to have their views taken into account in the context of a smaller parent body.
- 4.3 The inclusion of Kirk O' Shotts pupils in the Calderhead Cluster will provide opportunities for all learners within the primary school to develop a greater awareness and shared understanding of the different contexts of the wider Shotts area. In addition they will be able to develop aspects of citizenship linked to the local area within both curricular and non-curricular contexts.
- 4.4 Calderhead High School has made significant strides in improving pupil access to a broad and varied curriculum appropriate to the needs of their pupils. As stated earlier, the links with the community have enabled the school to access positive experiences for young people.
- 4.5 If the proposal is accepted, the community of Kirk O' Shotts Primary School will become part of the Shotts Local Area partnership and therefore be able to take part in discussions and influence decisions which have a direct impact on their wider community.
- 4.6 Developing the Young Workforce is a national and local priority. Providing children and young people with the skills, experiences and qualification for life beyond school and for the world of work should begin at the earliest opportunity. Children and young people should be aware of the post-school pathways available to them to enable them to make informed and appropriate choices and being part of the community, in both an educational and political landscape, can only be beneficial for pupils at Kirk O' Shotts primary.
- 4.7 As outlined in sections 4.4 to 4.6 above, the service is transforming the approach to supporting schools and local communities through the formation of area teams. As outlined in section 4.6 above it is anticipated that this approach will facilitate and co-ordinate improved educational outcomes for children and young people, support for families and empower communities in line with the council's five priorities.

## **5 COMMUNITY IMPACT STATEMENT**

- 5.1 North Lanarkshire is divided into seven 'local area partnership' areas, known as LAPs. Each Local Area Partnership (LAP) is made up of senior officers from the community planning partnership, including North Lanarkshire Council, NHS Lanarkshire, Police Scotland and Scottish Fire and Rescue Service. There is also representation from local councillors, local community groups and the third sector. The LAP meets every three months to consider service improvements and community development issues in the local area. LAP meetings are open to anyone (deleted a phrase here) and provide an opportunity for local residents, forums, groups and organisations to come along and get involved in local decision making.
- 5.2 Caldervale High School and all of the associated primary schools (apart from Kirk O'Shotts Primary School) are situated within the Airdrie LAP area. Kirk O'Shotts sits within the Wishaw LAP. This presents a disconnect between the local school community and the local area partnership structure through which local communities are connected.
- 5.3 Calderhead High School and all of the associated primary schools are situated within the Wishaw LAP area. Therefore, the move of Kirk O'Shotts Primary from Caldervale High School to Calderhead High School will provide an alignment between the local school community and the local area partnership.

### *Strategic change to service delivery*

- 5.4 The Assistant Chief Executive for Education, Youth and Communities is currently implementing a strategic change to the approach for delivering services (linked to Education, Youth, and Communities), to the communities of North Lanarkshire.
- 5.5 As part of this strategic shift, the Education service has divided the council area into three clearly defined geographical localities with associated teams: North; Central; and South. Caldervale High School and the wider Airdrie community are aligned with the Central team. Calderhead High School and Kirk O'Shotts Primary School are aligned with the South team.
- 5.6 Three Heads of Service within Education, Youth, and Communities have strategic responsibility for leadership of 'Support Around the School and Community Teams' (SASCT). This approach will facilitate and co-ordinate improved educational outcomes for children and young people, support for families and empower communities in line with the council's five priorities.
- 5.7 Working in a locality model, the imperative for a range of professionals and partners will be to lead, plan, and implement a transformed, integrated approach to service delivery. This integrated approach will inform all future planning, restructure and service delivery within Education, Youth and Communities.

## **6. OTHER IMPLICATIONS OF THE PROPOSALS**

### *Rolls and Capacities*

- 6.1 The school roll at Kirk O'Shotts Primary School over the last 10 years has provided an average of 77 pupils each year. The current roll in August 2017 is 72. As there are seven stages in primary school education, the school generates an average of 11 pupils per year in each stage who will, in due course, transfer to secondary school at the end of primary 7.

- 6.2 A change in pupil numbers for both Calderhead High School and Caldervale High School of 11 pupils in any given year will have minimal impact on school rolls and capacities. Therefore, it is presented that the proposal will have little impact on the school rolls at either secondary school.

#### *Transport arrangements*

- 6.3 As outlined in section 1.4, the distance from Kirk O' Shotts Primary School to Caldervale High School is approximately 4.5 miles. The distance from Kirk O' Shotts Primary School to Calderhead High School is approximately 3.5 miles.
- 6.4 Due to the distance from home to school, pupils are provided with free school transport to Caldervale High School. Given the distance between the Kirk O' Shotts catchment area and Calderhead High School, free school transport would continue be provided to Calderhead High School for pupils in the Kirk O'Shotts catchment area.

#### *Transitional arrangements – pupils with siblings already at Caldervale High School*

- 6.5 Changes to associations between primary and secondary schools can raise particular issues for some families. Changes could mean that a younger sibling is deemed to have a different catchment area from their elder sibling attending school under a previous arrangement. This proposal includes specific arrangements to support any families in this position.
- 6.6 The transitional arrangements are proposed to offer families directly affected by the change a level of flexibility and choice. These arrangements would last for a limited period of time.
- 6.7 It is proposed that the following transitional arrangements would apply:
- 6.8 The transitional arrangements would last no longer than five years from the date of the implemented change and the right of transfer to Caldervale High School would cease on 30<sup>th</sup> June 2023.
- 6.9 The younger sibling would have the right to a space at Caldervale High School only where there was an older sibling at Caldervale High School as at 30<sup>th</sup> June 2018.
- 6.10 The younger sibling, on transferring to Caldervale High School under the conditions outlined at 6.9, will continue to have the right of free school transport to Caldervale High School in line with the council's free school transport policy.
- 6.11 Where the pupil does not have an older sibling at Caldervale High School as at 30<sup>th</sup> June 2018, automatic transfer would be to Calderhead High School. Should the pupil wish to attend Caldervale High School after the implementation date, a placing request to Caldervale High School would be required. It should be noted that placing requests have no entitlement to free school transport. Younger siblings of pupils who attend Caldervale High School on a placing request would also be subject to a placing request in future years.

#### *Staffing*

- 6.12 It is considered that there will be no significant impact on staffing at any of the schools as a direct result of this proposal.

#### *Financial*

- 6.13 Given that there are currently pupils in the Salsburgh area who attend Caldervale High School, these pupils will still require transport to Caldervale High School. In addition, siblings of pupils currently at Caldervale High School would require transport as outlined in section 6.10 above.

- 6.14 Following implementation of the proposals, there would also be a requirement to provide school transport to Calderhead High School. Therefore, it is expected that there will be school transport arrangements required for both high schools for a limited period of time.
- 6.15 It is estimated that the additional cost of school transport would be between £15,000 and £20,000 per year. The actual costs would be determined through a tender process.

## **7. EQUALITY IMPACT ASSESSMENT**

- 7.1 The Equality Impact Assessment, Stage 1 Initial Screening has been carried out using the Council Equality Impact Assessment Toolkit. This indicates that a full impact assessment (Stage 2) is required and information gathered during the consultation exercise will inform the assessment of impact on protected groups. The Equality Impact Assessment will inform the post consultation report.

## **8 INACCURACIES OR OMISSIONS**

- 8.1 There is a statutory requirement for the Council to consider any allegation of an inaccuracy or omission in the proposal paper and determine whether the allegation has foundation. Where inaccuracies or omissions are notified to or discovered by the Council within this proposal document, the Council will determine if relevant information has in its opinion been omitted or whether there is in fact an inaccuracy. Notifiers of any omissions or inaccuracies will be informed of the Council's decision and the reasons for that decision. Notifiers will also be informed of any action the Council is taking and of the reasons why it is or is not taking such action.

The Council will invite the notifier to make further representations to the council if they disagree with the Council's determination or its decision as to whether to take action. If the authority has found, either itself or through a concern being raised, that there is an inaccuracy or omission in the proposal paper, it must decide whether it relates to a material consideration relevant to the proposal. Where the confirmed inaccuracy or omission relates to a material consideration, there is a duty on the Council to correct it.

Appropriate action will then be taken by the Council depending on whether the inaccuracy or omission relates to a material consideration. Such action may include withdrawing the proposal and issuing a revised proposal paper for the whole consultation period; or issuing a corrected proposal paper with, if appropriate, an extension of the consultation period. In any of these eventualities, all relevant consultees (and, where applicable, the notifier(s) of any omissions or inaccuracies) and HMIE (Education Scotland) will be advised of the appropriate action.

## **9 THE STATUTORY CONSULTATION PROCESS – ADDITIONAL INFORMATION**

- 9.1 The current requirements for consulting are set out in the Schools (Consultation) (Scotland) Act 2010. This consultation will be carried out in accordance with the Act.
- 9.2 This consultation has been planned in order to meet the following statutory requirements:
- (1) The consultation document sets out the details of the proposal.



- (2) The proposal paper details the educational benefits of the proposal and other relevant information;
- (3) The proposal paper will be published and widely advertised.
- (4) North Lanarkshire Council will seek to determine whether there are inaccuracies or omissions within the proposal paper and take such action as it considered necessary.
- (5) The consultation period will be period of at least 6 weeks, including at least 30 school days.
- (6) Prior to the commencement of the consultation period the authority will give notice of the proposal to the relevant consultees. The relevant consultees are defined in the Schools (Consultation) (Scotland) Act 2010, and are as follows:

Statutory consultees:

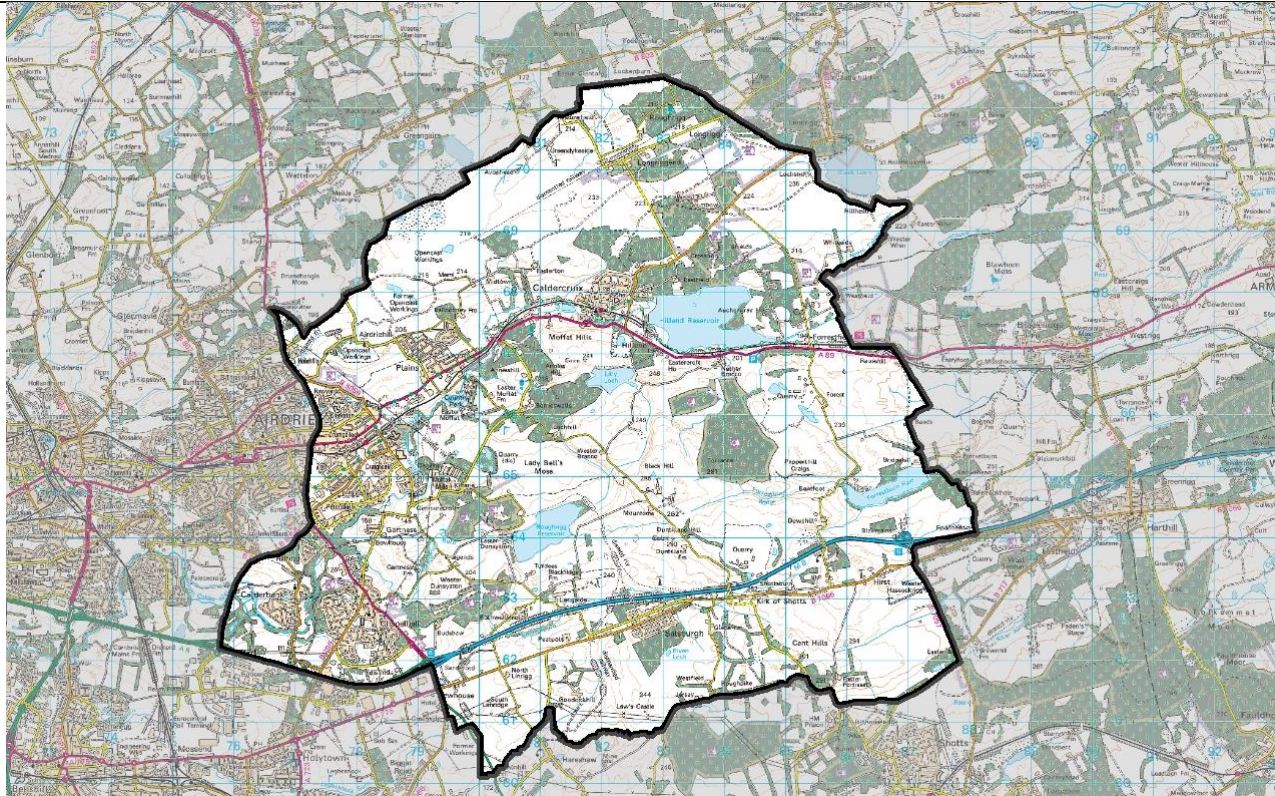
- the Parent Council or Combined Parent Council of any affected school,
- the parents of the pupils at any affected school,
- the parents of any children expected by the education authority to attend any affected school within two years of the date of publication of the proposal paper,
- the pupils at any affected school, in so far as the education authority considers them to be of a suitable age and maturity),
- the staff (teaching and other) at any affected school,
- any trade union which appears to the education authority to be representative of the persons mentioned above
- the community council (if any)
- the community planning partnership (within the meaning of section 4(5) of the Community Empowerment (Scotland) Act 2015) for the area of the local authority in which any affected school is situated,
- any other community planning partnership that the education authority considers relevant,
- any other education authority that the education authority considers relevant.

Other stakeholders who will be contacted:

- Education Scotland
  - Elected Members
  - SPT/local school transport providers
  - Roads Department colleagues
- (7) During the consultation period, the authority will hold and be represented at public meetings on the relevant proposal.
  - (8) The council will involve HMIE (Education Scotland) in the consultation process. This will culminate in HMIE( Education Scotland) preparing and submitting an independent report on the educational aspects of the proposal.

- (9) Following the consultation period, the council will prepare and publish a consultation report. The report will be published at least three weeks before a final decision is taken on the proposal.
- (10) The consultation timeline provides further information on the timescales for various stages in the statutory process.

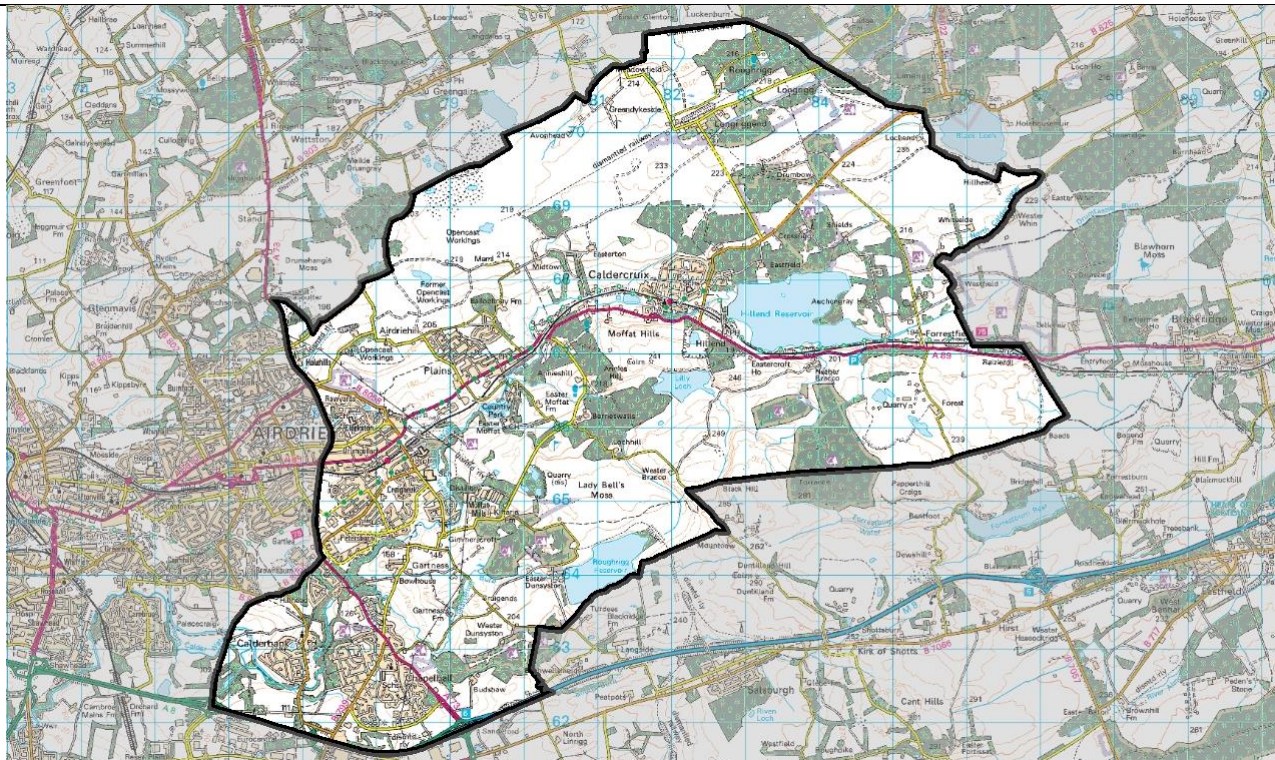
## Appendix One: Current Caldervale High School Catchment Area



A higher resolution version of this map can be downloaded from [www.northlanarkshire.gov.uk/KirkConsultation](http://www.northlanarkshire.gov.uk/KirkConsultation)

Reproduced by permission of the Ordnance Survey on behalf of HMSO.  
© Crown copyright and database right 2017.  
All rights reserved. Ordnance Survey Licence number 100023396

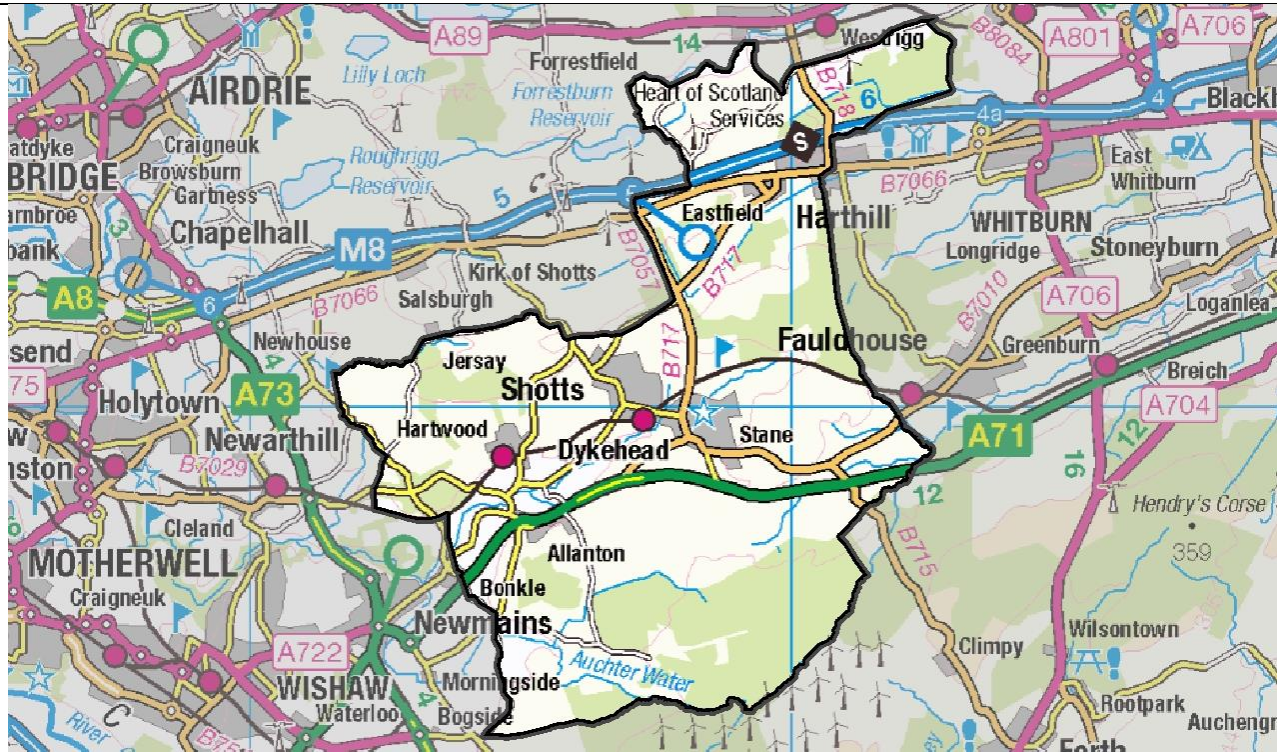
## Appendix Two: Proposed Caldervale High School Catchment Area



A higher resolution version of this map can be downloaded from [www.northlanarkshire.gov.uk/KirkConsultation](http://www.northlanarkshire.gov.uk/KirkConsultation)

Reproduced by permission of the Ordnance Survey on behalf of HMSO.  
© Crown copyright and database right 2017.  
All rights reserved. Ordnance Survey Licence number 100023396

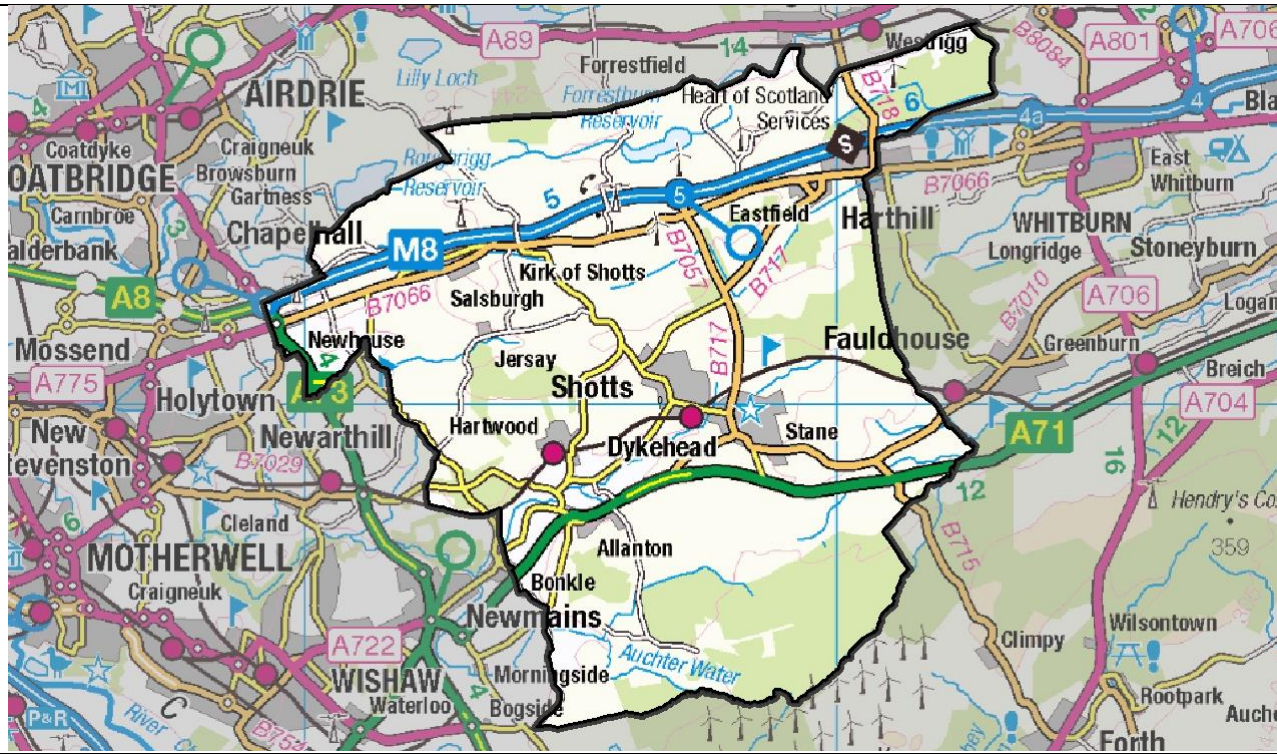
### Appendix Three: Current Calderhead High School Catchment Area



A higher resolution version of this map can be downloaded from [www.northlanarkshire.gov.uk/KirkConsultation](http://www.northlanarkshire.gov.uk/KirkConsultation)

Reproduced by permission of the Ordnance Survey on behalf of HMSO.  
© Crown copyright and database right 2017.  
All rights reserved. Ordnance Survey Licence number 100023396

### Appendix Four: Proposed Calderhead High School Catchment Area



A higher resolution version of this map can be downloaded from [www.northlanarkshire.gov.uk/KirkConsultation](http://www.northlanarkshire.gov.uk/KirkConsultation)

Reproduced by permission of the Ordnance Survey on behalf of HMSO.  
© Crown copyright and database right 2017.

<b>Stages</b>	<b>Timeline</b>	<b>Date</b>
1. <i>Committee Date</i>		Tuesday 9 <sup>th</sup> January 2018
2. <i>Consultation Starts Phase 1</i>	Minimum of 6 weeks To include 30 calendar days	Wednesday 10 <sup>th</sup> January 2018
3. <i>Public Meeting</i>		<b>Kirk O'Shotts Primary on Tuesday 23<sup>rd</sup> January 2018 at 7pm</b>
4. <i>Consultation Ends</i>	30 Days	Friday 23 <sup>rd</sup> February 2018
5. <i>Report to Education Scotland Phase2</i>	3 weeks	Friday 16 <sup>th</sup> March 2018
6. <i>Education Scotland produce report</i>	3 weeks	Friday 6 <sup>th</sup> April 2018
7. <i>Consultation report published Phase 3</i>	No specified timescale	Friday 20 April 2018
8. <i>Time for further consideration</i>	3 weeks	Friday 11 May 2018
9. <i>Final Committee Decision</i>		15 May 2018 (Education Committee) 21 June 2018 (Council)
10. <i>Implementation Date</i>		August 2018

**North Lanarkshire Council: Education, Skills and Youth Employment**

**Consultation Form**

**Proposal that pupils from Kirk O’ Shotts Primary School transfer automatically to Calderhead High School rather than Caldervale High School.**

**Your Views**

1. Do you support the proposal to change the catchment secondary school for Kirk O’ Shotts Primary School from Caldervale High School to Calderhead High School?

Yes  No

Do you have any comments on the changes proposed to catchment areas?

---



---



---

2. Are there any further comments you would like to make?

---



---



---

**Your main interest in responding:**

I am a parent/carer of a child attending Kirk O’ Shotts Primary School	<input type="checkbox"/>
I am a parent/carer of a child attending Calderhead High School	<input type="checkbox"/>
I am a parent/carer of a child attending Caldervale High School	<input type="checkbox"/>
I am a parent carer of a child attending a local nursery establishment	<input type="checkbox"/>
I am a child attending Kirk O’Shotts Primary School	<input type="checkbox"/>
I am a child attending Calderhead High School	<input type="checkbox"/>
I am a child attending Caldervale High School	<input type="checkbox"/>

Other interested party (please specify)

Please return to: School Consultation , Kirk O’Shotts Rezoning from Caldervale to Calderhead, Education, Youth and Communities, Municipal Buildings, Kildonan Street, Coatbridge, ML5 3BT.